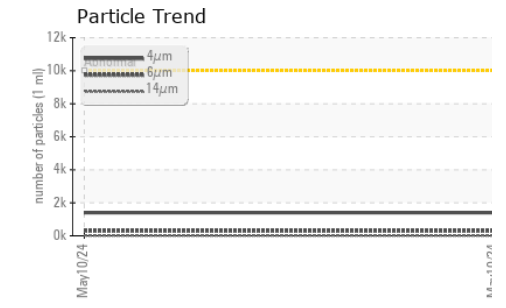
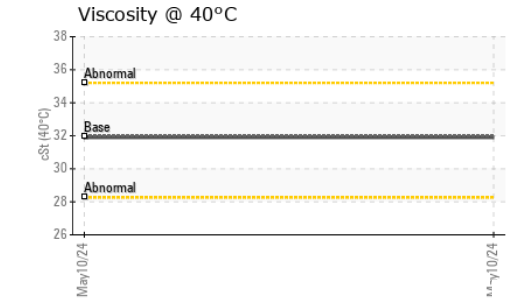
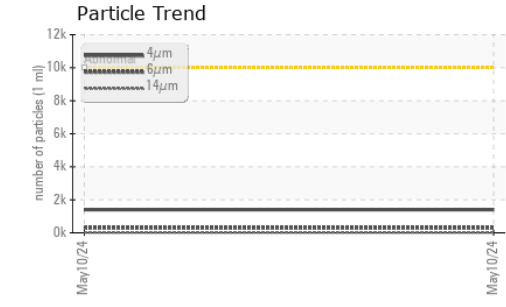
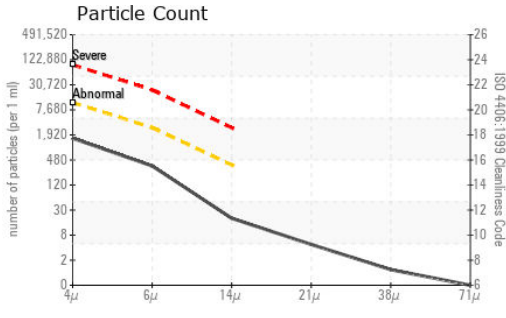






# OIL ANALYSIS REPORT

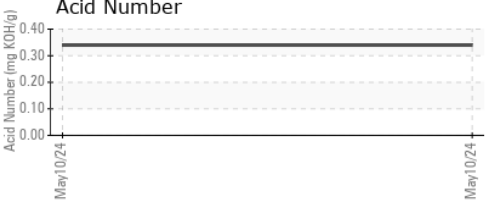
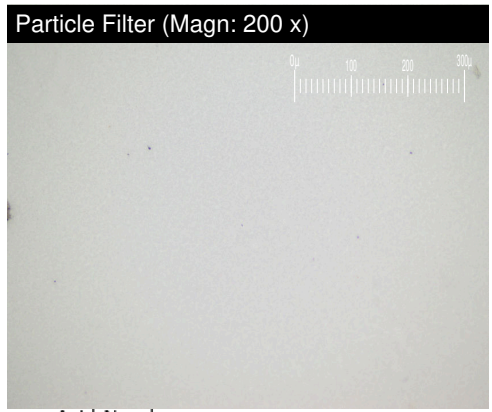
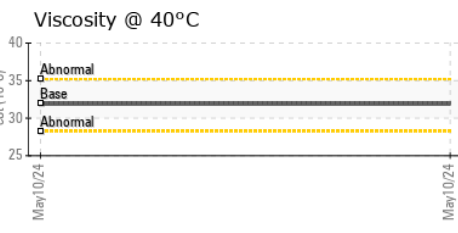
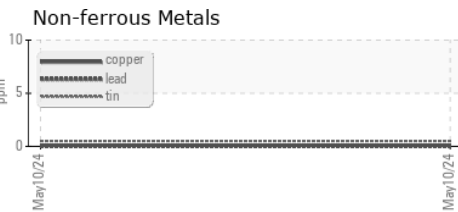
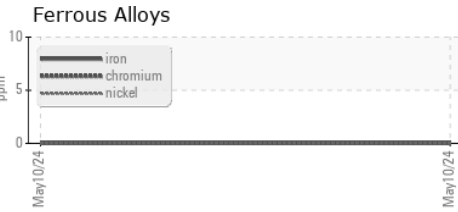


VISUAL	method	limit/base	current	history1	history2	
White Metal	scalar	*Visual	NONE	NONE	---	---
Yellow Metal	scalar	*Visual	NONE	NONE	---	---
Precipitate	scalar	*Visual	NONE	NONE	---	---
Silt	scalar	*Visual	NONE	NONE	---	---
Debris	scalar	*Visual	NONE	NONE	---	---
Sand/Dirt	scalar	*Visual	NONE	NONE	---	---
Appearance	scalar	*Visual	NORML	NORML	---	---
Odor	scalar	*Visual	NORML	NORML	---	---
Emulsified Water	scalar	*Visual	>0.05	NEG	---	---
Free Water	scalar	*Visual		NEG	---	---

FLUID PROPERTIES	method	limit/base	current	history1	history2
Visc @ 40°C	cSt	ASTM D445 32	31.9	---	---

SAMPLE IMAGES	method	limit/base	current	history1	history2
Color					
Bottom					
PrtFilter					

## GRAPHS



**Laboratory** : WearCheck USA - 501 Madison Ave., Cary, NC 27513  
**Sample No.** : PH0002074      **Received** : 17 May 2024  
**Lab Number** : 06182773      **Tested** : 29 May 2024  
**Unique Number** : 11034099      **Diagnosed** : 29 May 2024 - Jonathan Hester  
**Test Package** : PLANT ( Additional Tests: PrtFilter )

**WOODWARD INC - WLC**  
 1041 WOODWARD WAY  
 FORT COLLINS, CO  
 US 80524  
 Contact: ADRIAN BAJCSI  
 adrian.bajcsi@woodward.com  
 T: (970)492-0779  
 F:

To discuss this sample report, contact Customer Service at 1-800-237-1369.  
 \* - Denotes test methods that are outside of the ISO 17025 scope of accreditation.  
 Statements of conformity to specifications are based on the simple acceptance decision rule (JCGM 106:2012)