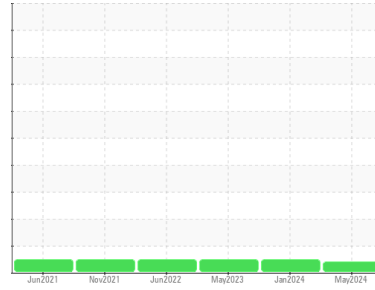




OIL ANALYSIS REPORT

Sample Rating Trend



ADDITIVES



Area

SULLAIR SULLUBE

Machine Id

SULLAIR 201311270033 - LANTECH

Component

Compressor

DIAGNOSIS

Recommendation

Resample at the next service interval to monitor.

Wear

All component wear rates are normal.

Contamination

There is no indication of any contamination in the oil.

Fluid Condition

An additive depletion is indicated. The AN level is acceptable for this fluid. The condition of the oil is suitable for further service.

SAMPLE INFORMATION

	method	limit/base	current	history1	history2
Sample Number	Client Info		UCH06182981	UCH06069609	UCH05856765
Sample Date	Client Info		06 May 2024	15 Jan 2024	05 May 2023
Machine Age	hrs	Client Info	37394	36321	36057
Oil Age	hrs	Client Info	1999	926	1000
Oil Changed	Client Info		N/A	Not Changd	Not Changd
Sample Status			ATTENTION	NORMAL	NORMAL

CONTAMINATION

	method	limit/base	current	history1	history2
Water	WC Method	>0.1	NEG	NEG	NEG

WEAR METALS

	method	limit/base	current	history1	history2	
Iron	ppm	ASTM D5185m	>50	0	0	4
Chromium	ppm	ASTM D5185m	>10	0	0	0
Nickel	ppm	ASTM D5185m		<1	0	<1
Titanium	ppm	ASTM D5185m		0	0	0
Silver	ppm	ASTM D5185m		0	0	0
Aluminum	ppm	ASTM D5185m	>25	<1	0	1
Lead	ppm	ASTM D5185m	>25	<1	<1	0
Copper	ppm	ASTM D5185m	>50	0	2	<1
Tin	ppm	ASTM D5185m	>15	<1	<1	<1
Vanadium	ppm	ASTM D5185m		0	0	0
Cadmium	ppm	ASTM D5185m		0	0	0

ADDITIVES

	method	limit/base	current	history1	history2	
Boron	ppm	ASTM D5185m		0	0	0
Barium	ppm	ASTM D5185m	745	4	246	385
Molybdenum	ppm	ASTM D5185m	0.0	0	0	0
Manganese	ppm	ASTM D5185m		<1	<1	1
Magnesium	ppm	ASTM D5185m	0.0	1	4	4
Calcium	ppm	ASTM D5185m	1	<1	4	2
Phosphorus	ppm	ASTM D5185m	3	147	<1	5
Zinc	ppm	ASTM D5185m	0.1	0	141	14
Sulfur	ppm	ASTM D5185m	240	182	219	231

CONTAMINANTS

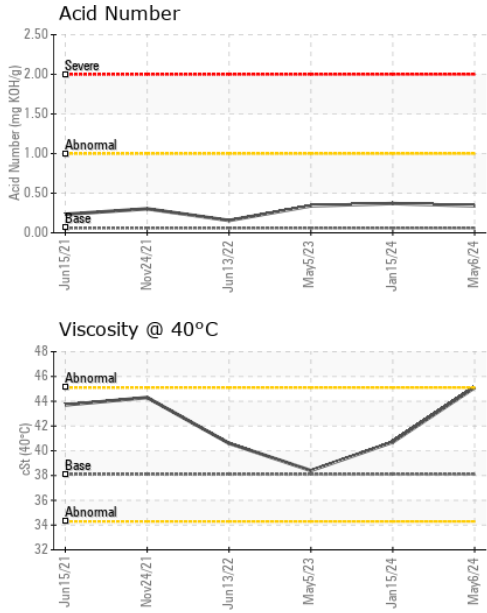
	method	limit/base	current	history1	history2	
Silicon	ppm	ASTM D5185m	>25	1	<1	0
Sodium	ppm	ASTM D5185m		3	33	10
Potassium	ppm	ASTM D5185m	>20	1	2	1

FLUID DEGRADATION

	method	limit/base	current	history1	history2	
Acid Number (AN)	mg KOH/g	ASTM D8045	.06	0.34	0.37	0.34



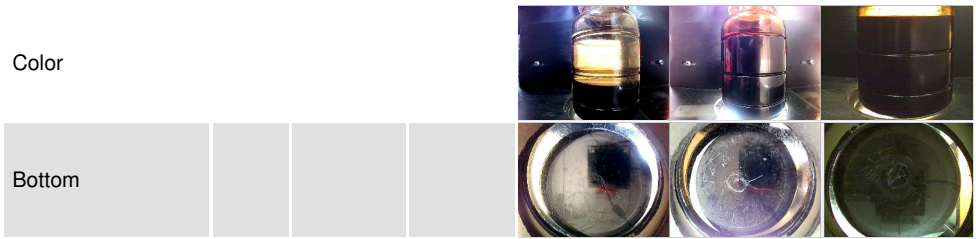
OIL ANALYSIS REPORT



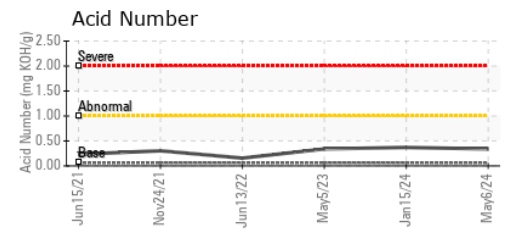
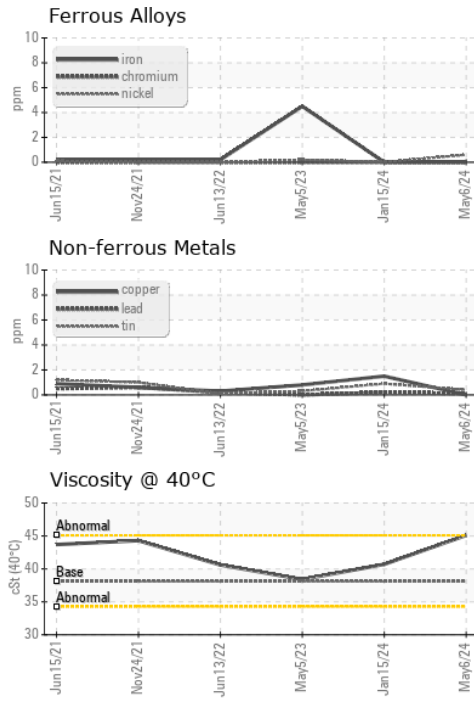
VISUAL	method	limit/base	current	history1	history2
White Metal	scalar	*Visual	NONE	NONE	NONE
Yellow Metal	scalar	*Visual	NONE	NONE	NONE
Precipitate	scalar	*Visual	NONE	NONE	NONE
Silt	scalar	*Visual	NONE	NONE	NONE
Debris	scalar	*Visual	NONE	NONE	LIGHT
Sand/Dirt	scalar	*Visual	NONE	NONE	NONE
Appearance	scalar	*Visual	NORML	NORML	NORML
Odor	scalar	*Visual	NORML	NORML	NORML
Emulsified Water	scalar	*Visual	>0.1	NEG	NEG
Free Water	scalar	*Visual		NEG	NEG

FLUID PROPERTIES	method	limit/base	current	history1	history2	
Visc @ 40°C	cSt	ASTM D445	38.1	45.1	40.7	38.4

SAMPLE IMAGES	method	limit/base	current	history1	history2
---------------	--------	------------	---------	----------	----------



GRAPHS



Laboratory : WearCheck USA - 501 Madison Ave., Cary, NC 27513
Sample No. : UCH06182981 **Received** : 17 May 2024
Lab Number : **06182981** **Tested** : 24 May 2024
Unique Number : 11034307 **Diagnosed** : 29 May 2024 - Jonathan Hester
Test Package : IND 2

AIR TECHNOLOGIES INC (LOU)
 1302 N ENGLISH STATION RD
 LOUISVILLE, KY
 US 40223-2280
 Contact: BRYAN BENJAMIN
 bryan.benjamin@aircompressors.com
 T: (502)253-6361
 F: (502)254-2523

To discuss this sample report, contact Customer Service at 1-800-237-1369.
 * - Denotes test methods that are outside of the ISO 17025 scope of accreditation.
 Statements of conformity to specifications are based on the simple acceptance decision rule (JCGM 106:2012)