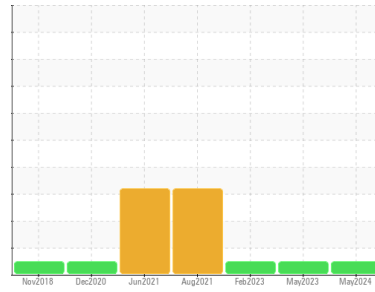




OIL ANALYSIS REPORT

Sample Rating Trend



NORMAL



Area
SULLAIR SULLUBE [CSA723]
 Machine Id
SULLAIR 003-139381 - LANTECH
 Component
Compressor

DIAGNOSIS

Recommendation

Resample at the next service interval to monitor.

Wear

All component wear rates are normal.

Contamination

There is no indication of any contamination in the oil.

Fluid Condition

The AN level is acceptable for this fluid. The condition of the oil is suitable for further service.

SAMPLE INFORMATION

	method	limit/base	current	history1	history2
Sample Number	Client Info		UCH06182982	UCH05856769	UCH05780196
Sample Date	Client Info		06 May 2024	05 May 2023	14 Feb 2023
Machine Age	hrs	Client Info	78977	73000	73287
Oil Age	hrs	Client Info	0	4200	0
Oil Changed	Client Info		N/A	Not Changd	Not Changd
Sample Status			NORMAL	NORMAL	NORMAL

CONTAMINATION

	method	limit/base	current	history1	history2
Water	WC Method	>0.1	NEG	NEG	NEG

WEAR METALS

	method	limit/base	current	history1	history2	
Iron	ppm	ASTM D5185m	>50	0	9	1
Chromium	ppm	ASTM D5185m	>10	0	0	0
Nickel	ppm	ASTM D5185m		0	<1	0
Titanium	ppm	ASTM D5185m		0	0	0
Silver	ppm	ASTM D5185m		<1	0	0
Aluminum	ppm	ASTM D5185m	>25	0	2	<1
Lead	ppm	ASTM D5185m	>25	<1	0	0
Copper	ppm	ASTM D5185m	>50	2	2	<1
Tin	ppm	ASTM D5185m	>15	<1	<1	<1
Antimony	ppm	ASTM D5185m		---	---	---
Vanadium	ppm	ASTM D5185m		<1	0	0
Cadmium	ppm	ASTM D5185m		0	0	0

ADDITIVES

	method	limit/base	current	history1	history2	
Boron	ppm	ASTM D5185m		0	0	0
Barium	ppm	ASTM D5185m	745	194	393	431
Molybdenum	ppm	ASTM D5185m	0.0	0	0	0
Manganese	ppm	ASTM D5185m		0	3	<1
Magnesium	ppm	ASTM D5185m	0.0	0	9	2
Calcium	ppm	ASTM D5185m	1	0	3	3
Phosphorus	ppm	ASTM D5185m	3	0	9	5
Zinc	ppm	ASTM D5185m	0.1	171	62	45
Sulfur	ppm	ASTM D5185m	240	126	327	290

CONTAMINANTS

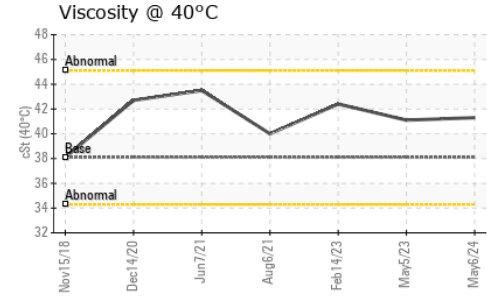
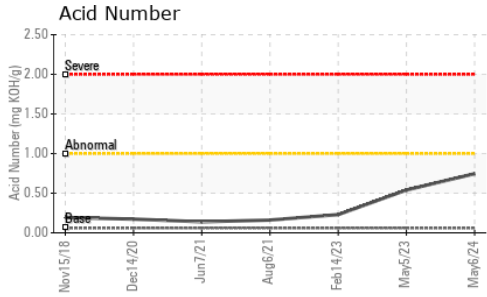
	method	limit/base	current	history1	history2	
Silicon	ppm	ASTM D5185m	>25	<1	1	2
Sodium	ppm	ASTM D5185m		33	17	28
Potassium	ppm	ASTM D5185m	>20	2	<1	1

FLUID DEGRADATION

	method	limit/base	current	history1	history2	
Acid Number (AN)	mg KOH/g	ASTM D8045	.06	0.746	0.54	0.23



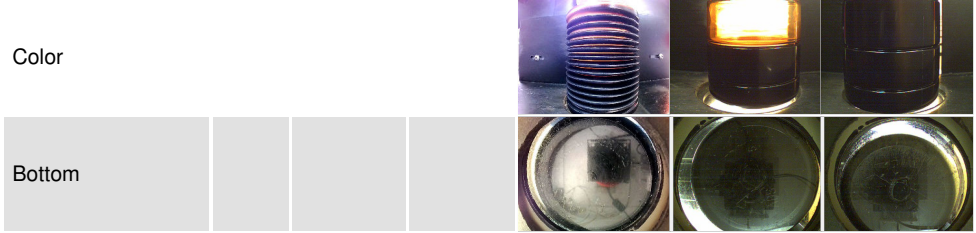
OIL ANALYSIS REPORT



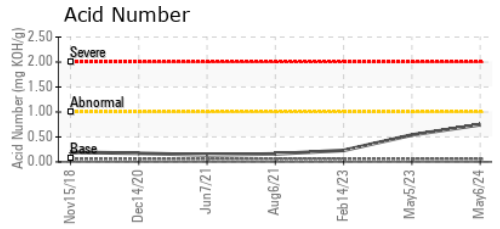
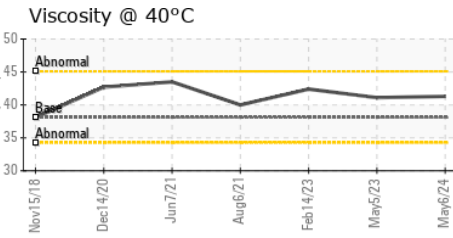
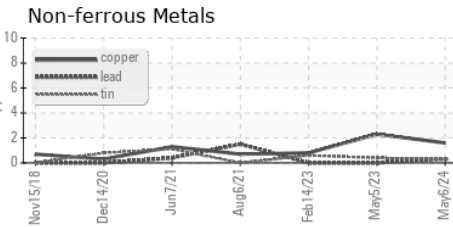
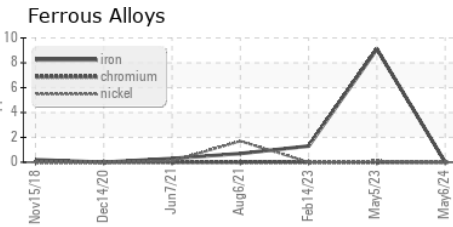
VISUAL	method	limit/base	current	history1	history2
White Metal	scalar	*Visual	NONE	LIGHT	NONE
Yellow Metal	scalar	*Visual	NONE	NONE	NONE
Precipitate	scalar	*Visual	NONE	NONE	NONE
Silt	scalar	*Visual	NONE	NONE	NONE
Debris	scalar	*Visual	NONE	NONE	NONE
Sand/Dirt	scalar	*Visual	NONE	NONE	NONE
Appearance	scalar	*Visual	NORML	NORML	NORML
Odor	scalar	*Visual	NORML	NORML	NORML
Emulsified Water	scalar	*Visual	>0.1	NEG	NEG
Free Water	scalar	*Visual		NEG	NEG

FLUID PROPERTIES	method	limit/base	current	history1	history2
Visc @ 40°C	cSt	ASTM D445	38.1	41.3	41.1

SAMPLE IMAGES	method	limit/base	current	history1	history2
---------------	--------	------------	---------	----------	----------



GRAPHS



Laboratory : WearCheck USA - 501 Madison Ave., Cary, NC 27513
Sample No. : UCH06182982 **Received** : 17 May 2024
Lab Number : 06182982 **Tested** : 20 May 2024
Unique Number : 11034308 **Diagnosed** : 21 May 2024 - Sean Felton
Test Package : IND 2

AIR TECHNOLOGIES INC (LOU)
 1302 N ENGLISH STATION RD
 LOUISVILLE, KY 40223-2280
 Contact: BRYAN BENJAMIN
 bryan.benjamin@aircompressors.com
 T: (502)253-6361
 F: (502)254-2523

To discuss this sample report, contact Customer Service at 1-800-237-1369.

* - Denotes test methods that are outside of the ISO 17025 scope of accreditation.

Statements of conformity to specifications are based on the simple acceptance decision rule (JCGM 106:2012)