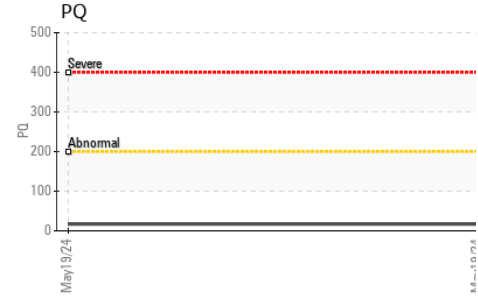
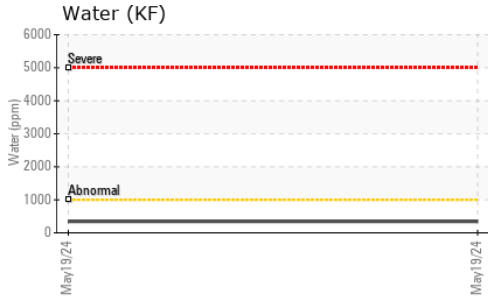


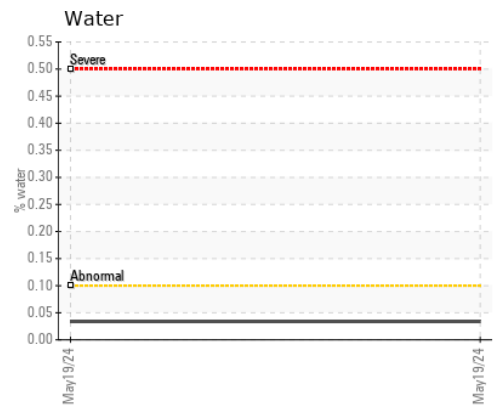
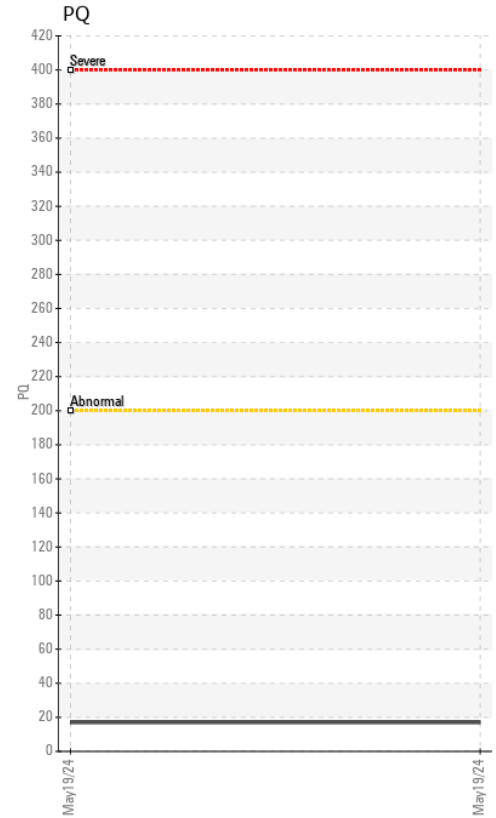
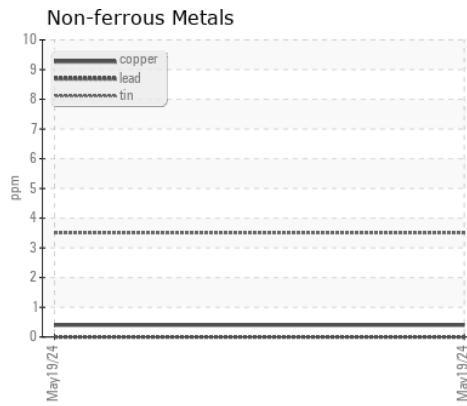
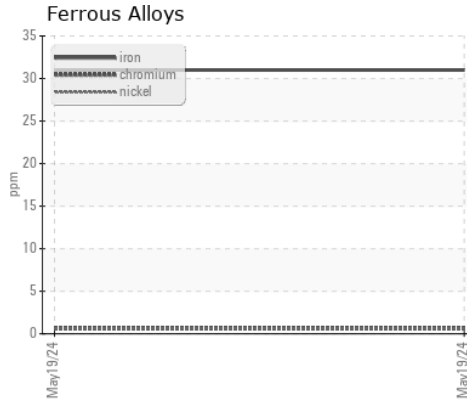


GREASE ANALYSIS



SAMPLE IMAGES	method	limit/base	current	history1	history2
Color				no image	no image
Bottom				no image	no image

GRAPHS



Certificate L2367

Laboratory : WearCheck USA - 501 Madison Ave., Cary, NC 27513
Sample No. : RP0041529 **Received** : 17 May 2024
Lab Number : **06183824** **Tested** : 07 Jun 2024
Unique Number : 11035150 **Diagnosed** : 07 Jun 2024 - Aaron Black
Test Package : GRS 3 (Additional Tests: SCREEN)

ENGIE-MATEP
 474 BROOKLINE AVE
 BOSTON, MA
 US 02215

Contact: ROBERT ST SAUVEUR
 robert.stsauveur@engie.com

To discuss this sample report, contact Customer Service at 1-800-237-1369.

* - Denotes test methods that are outside of the ISO 17025 scope of accreditation.

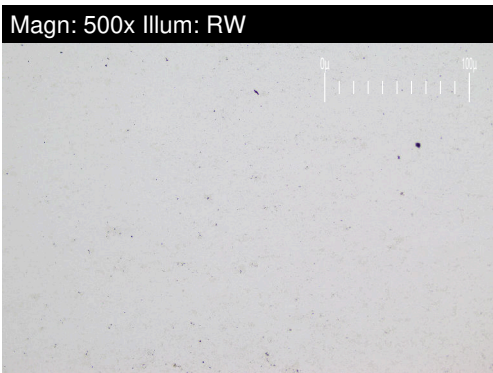
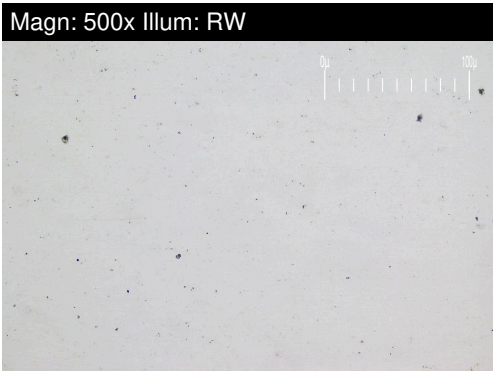
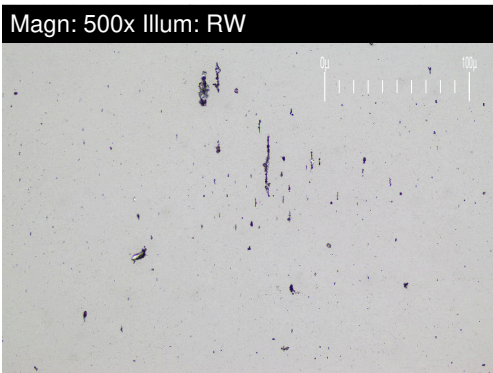
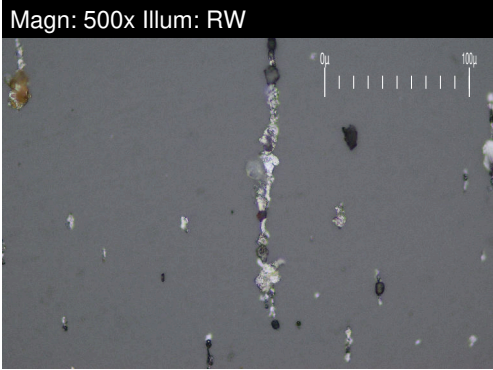
Statements of conformity to specifications are based on the simple acceptance decision rule (JCGM 106:2012)

T: (401)651-9381

F:

FERROGRAPHY REPORT

Machine Id
1ST STAGE MOTOR CTG-300
 Component
Outboard Grease
 Fluid
{not provided} (--- GAL)



FERROGRAPHY	method	limit/base	current	history1	history2
Ferrous Rubbing	Scale 0-10 *ASTM D7684		2		
Ferrous Sliding	Scale 0-10 *ASTM D7684		1		
Ferrous Cutting	Scale 0-10 *ASTM D7684		1		
Ferrous Rolling	Scale 0-10 *ASTM D7684		1		
Ferrous Break-in	Scale 0-10 *ASTM D7684				
Ferrous Spheres	Scale 0-10 *ASTM D7684				
Ferrous Black Oxides	Scale 0-10 *ASTM D7684				
Ferrous Red Oxides	Scale 0-10 *ASTM D7684				
Ferrous Corrosive	Scale 0-10 *ASTM D7684				
Ferrous Other	Scale 0-10 *ASTM D7684				
Nonferrous Rubbing	Scale 0-10 *ASTM D7684				
Nonferrous Sliding	Scale 0-10 *ASTM D7684				
Nonferrous Cutting	Scale 0-10 *ASTM D7684				
Nonferrous Rolling	Scale 0-10 *ASTM D7684				
Nonferrous Other	Scale 0-10 *ASTM D7684				
Carbonaceous Material	Scale 0-10 *ASTM D7684				
Lubricant Degradation	Scale 0-10 *ASTM D7684				
Sand/Dirt	Scale 0-10 *ASTM D7684				
Fibres	Scale 0-10 *ASTM D7684				
Spheres	Scale 0-10 *ASTM D7684				
Other	Scale 0-10 *ASTM D7684		2		

WEAR

All component wear rates are normal.
 The ferrography results are normal indicating no abnormal wear in the system.

This page left intentionally blank