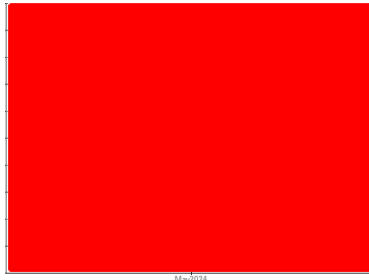




PROBLEM SUMMARY

Sample Rating Trend

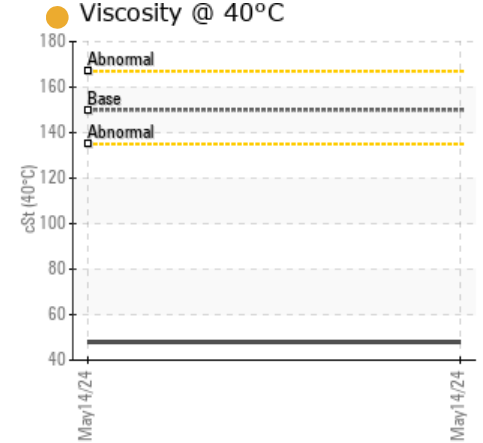
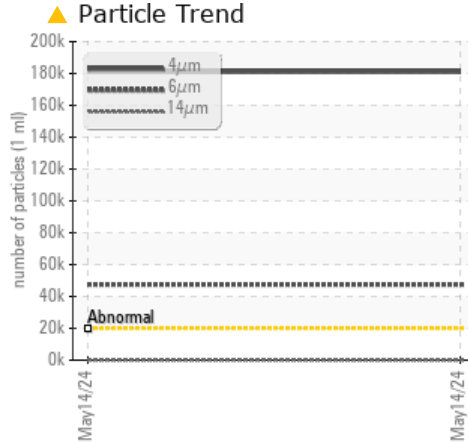
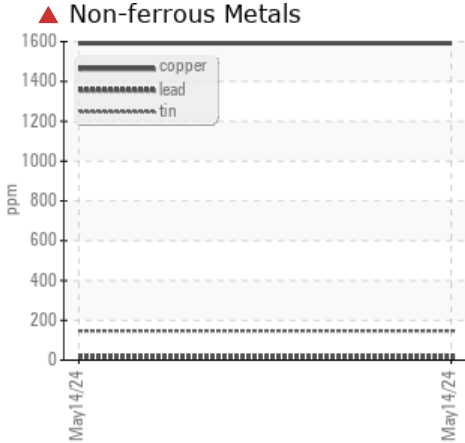


WEAR



Machine Id
R1
Component
Gearbox
Fluid
Mobilgear 600 XP 150 (--- GAL)

COMPONENT CONDITION SUMMARY



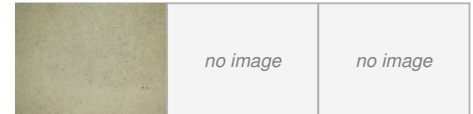
RECOMMENDATION

We recommend you service the filters on this component if applicable. We advise that you inspect for the source(s) of wear. We recommend an early resample to monitor this condition.

PROBLEMATIC TEST RESULTS

Sample Status				SEVERE	---	---
Copper	ppm	ASTM D5185m	>200	▲ 1592	---	---
Tin	ppm	ASTM D5185m	>25	▲ 147	---	---
Particles >4µm		ASTM D7647	>20000	▲ 181130	---	---
Particles >6µm		ASTM D7647	>5000	▲ 47459	---	---
Oil Cleanliness		ISO 4406 (c)	>21/19/16	▲ 25/23/13	---	---

PrtFilter



Customer Id: WIEONT
Sample No.: PH0001229
Lab Number: 06184292
Test Package: PLANT



To manage this report scan the QR code

To discuss the diagnosis or test data:
Jonathan Hester +1 919-379-4092 x4092
jhester@wearcheckusa.com

To change component or sample information:
Customer Service +1 1-800-237-1369
customerservice@wearcheck.com

RECOMMENDED ACTIONS

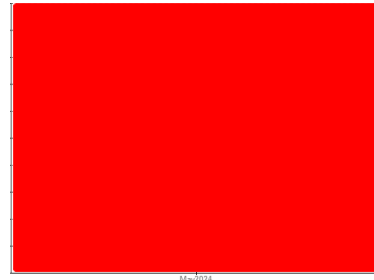
Action	Status	Date	Done By	Description
Inspect Wear Source	---	---	?	We advise that you inspect for the source(s) of wear.
Change Filter	---	---	?	We recommend you service the filters on this component if applicable.
Resample	---	---	?	We recommend an early resample to monitor this condition.

HISTORICAL DIAGNOSIS



OIL ANALYSIS REPORT

Sample Rating Trend



WEAR



Machine Id
R1
Component
Gearbox
Fluid
Mobilgear 600 XP 150 (--- GAL)

DIAGNOSIS

▲ Recommendation

We recommend you service the filters on this component if applicable. We advise that you inspect for the source(s) of wear. We recommend an early resample to monitor this condition.

▲ Wear

Bearing and/or bushing wear is indicated.

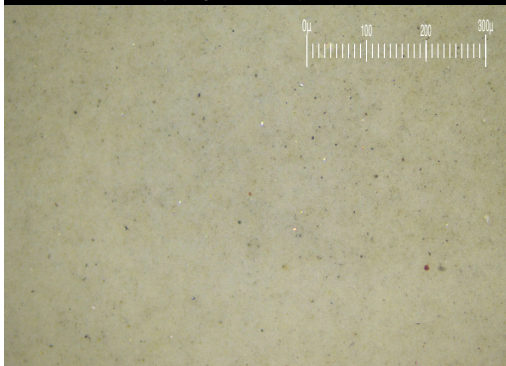
▲ Contamination

There is a high amount of silt (particulates < 14 microns in size) present in the oil.

● Fluid Condition

Viscosity of sample indicates oil is within ISO 46 range, advise investigate. Confirm oil type. The AN level is acceptable for this fluid.

Particle Filter (Magn: 200 x)



SAMPLE INFORMATION

	method	limit/base	current	history1	history2
Sample Number	Client Info		PH0001229	---	---
Sample Date	Client Info		14 May 2024	---	---
Machine Age	hrs	Client Info	0	---	---
Oil Age	hrs	Client Info	0	---	---
Oil Changed	Client Info		Not Chngd	---	---
Sample Status			SEVERE	---	---

CONTAMINATION

	method	limit/base	current	history1	history2
Water	WC Method	>0.2	NEG	---	---

WEAR METALS

	method	limit/base	current	history1	history2
Iron	ppm	ASTM D5185m >200	19	---	---
Chromium	ppm	ASTM D5185m >15	0	---	---
Nickel	ppm	ASTM D5185m >15	<1	---	---
Titanium	ppm	ASTM D5185m	0	---	---
Silver	ppm	ASTM D5185m	0	---	---
Aluminum	ppm	ASTM D5185m >25	0	---	---
Lead	ppm	ASTM D5185m >100	16	---	---
Copper	ppm	ASTM D5185m >200	▲ 1592	---	---
Tin	ppm	ASTM D5185m >25	▲ 147	---	---
Vanadium	ppm	ASTM D5185m	0	---	---
Cadmium	ppm	ASTM D5185m	0	---	---

ADDITIVES

	method	limit/base	current	history1	history2
Boron	ppm	ASTM D5185m	0	---	---
Barium	ppm	ASTM D5185m	<1	---	---
Molybdenum	ppm	ASTM D5185m	0	---	---
Manganese	ppm	ASTM D5185m	1	---	---
Magnesium	ppm	ASTM D5185m	1	---	---
Calcium	ppm	ASTM D5185m	128	---	---
Phosphorus	ppm	ASTM D5185m	473	---	---
Zinc	ppm	ASTM D5185m	605	---	---
Sulfur	ppm	ASTM D5185m	6139	---	---

CONTAMINANTS

	method	limit/base	current	history1	history2
Silicon	ppm	ASTM D5185m >50	46	---	---
Sodium	ppm	ASTM D5185m	5	---	---
Potassium	ppm	ASTM D5185m >20	0	---	---

FLUID CLEANLINESS

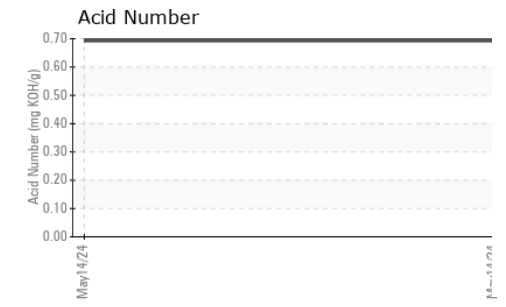
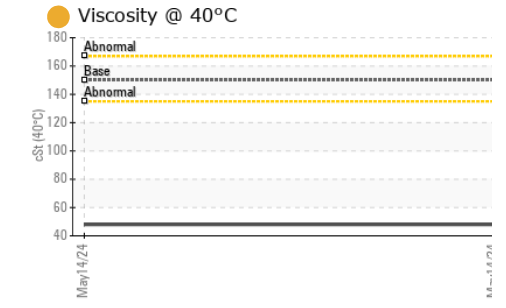
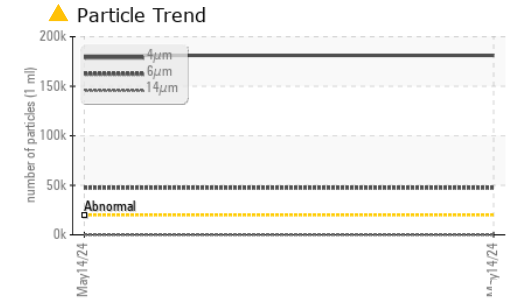
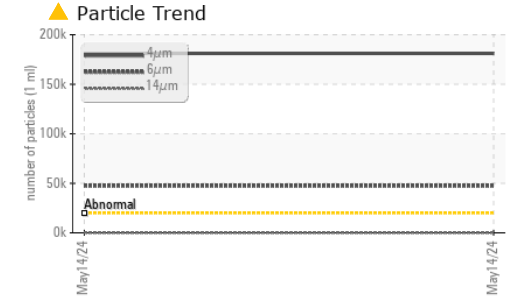
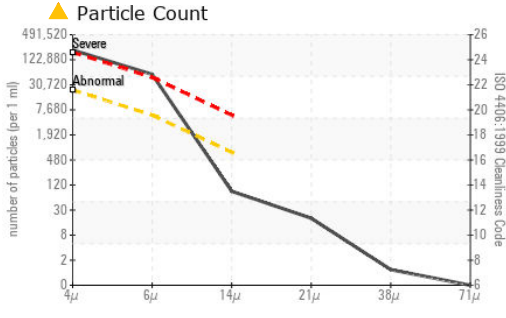
	method	limit/base	current	history1	history2
Particles >4µm	ASTM D7647	>20000	▲ 181130	---	---
Particles >6µm	ASTM D7647	>5000	▲ 47459	---	---
Particles >14µm	ASTM D7647	>640	75	---	---
Particles >21µm	ASTM D7647	>160	17	---	---
Particles >38µm	ASTM D7647	>40	1	---	---
Particles >71µm	ASTM D7647	>10	0	---	---
Oil Cleanliness	ISO 4406 (c)	>21/19/16	▲ 25/23/13	---	---

FLUID DEGRADATION

	method	limit/base	current	history1	history2
Acid Number (AN)	mg KOH/g	ASTM D8045	0.693	---	---



OIL ANALYSIS REPORT



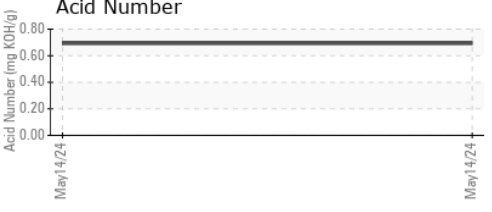
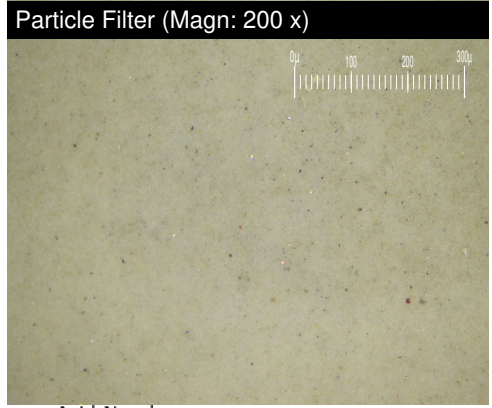
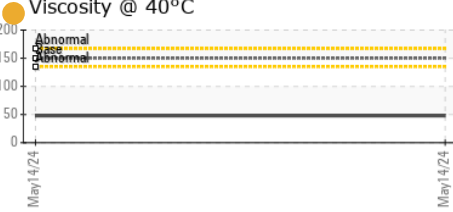
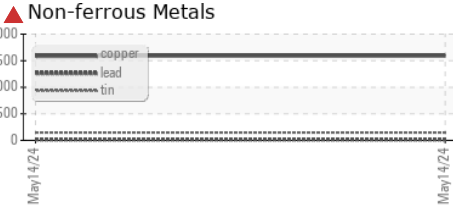
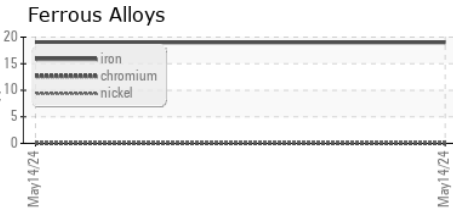
VISUAL	method	limit/base	current	history1	history2	
White Metal	scalar	*Visual	NONE	NONE	---	---
Yellow Metal	scalar	*Visual	NONE	NONE	---	---
Precipitate	scalar	*Visual	NONE	NONE	---	---
Silt	scalar	*Visual	NONE	NONE	---	---
Debris	scalar	*Visual	NONE	NONE	---	---
Sand/Dirt	scalar	*Visual	NONE	NONE	---	---
Appearance	scalar	*Visual	NORML	NORML	---	---
Odor	scalar	*Visual	NORML	NORML	---	---
Emulsified Water	scalar	*Visual	>0.2	NEG	---	---
Free Water	scalar	*Visual		NEG	---	---

FLUID PROPERTIES	method	limit/base	current	history1	history2	
Visc @ 40°C	cSt	ASTM D445	150	● 47.99	---	---

SAMPLE IMAGES	method	limit/base	current	history1	history2
---------------	--------	------------	---------	----------	----------

Color				no image	no image
Bottom				no image	no image
PrtFilter				no image	no image

GRAPHS



Laboratory : WearCheck USA - 501 Madison Ave., Cary, NC 27513
Sample No. : PH0001229 **Received** : 20 May 2024
Lab Number : 06184292 **Tested** : 29 May 2024
Unique Number : 11035618 **Diagnosed** : 29 May 2024 - Jonathan Hester
Test Package : PLANT (Additional Tests: PrtFilter)

WIELAND
 5100 S ARCHIBALD AVE
 ONTARIO, CA
 US 91762
 Contact: Service Manager

To discuss this sample report, contact Customer Service at 1-800-237-1369.

* - Denotes test methods that are outside of the ISO 17025 scope of accreditation.
 Statements of conformity to specifications are based on the simple acceptance decision rule (JCGM 106:2012)