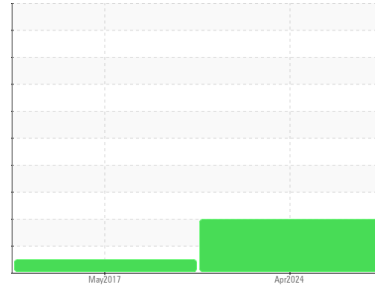




OIL ANALYSIS REPORT

Sample Rating Trend



DEGRADATION



Area

AIRLUBE 228

Machine Id

ATLAS COPCO API623-286 - NEW CENTER STAMPING 5

Component

Compressor

DIAGNOSIS

Recommendation

The oil is near the end of its useful service life, recommend schedule an oil change. We recommend an early resample to monitor this condition.

Wear

An increase in the copper level is noted.

Contamination

There is no indication of any contamination in the oil.

Fluid Condition

The AN level is at the top-end of the recommended limit.

SAMPLE INFORMATION

| | method | limit/base | current | history1 | history2 |
|---------------|-------------|-------------|--------------------|-------------|----------|
| Sample Number | Client Info | | UCH06184443 | UCH04249499 | --- |
| Sample Date | Client Info | | 18 Apr 2024 | 16 May 2017 | --- |
| Machine Age | hrs | Client Info | 4213 | 2135 | --- |
| Oil Age | hrs | Client Info | 2243 | 0 | --- |
| Oil Changed | Client Info | | Not Chngd | N/A | --- |
| Sample Status | | | ATTENTION | NORMAL | --- |

CONTAMINATION

| | method | limit/base | current | history1 | history2 |
|-------|-----------|------------|------------|----------|----------|
| Water | WC Method | >0.1 | NEG | NEG | --- |

WEAR METALS

| | method | limit/base | current | history1 | history2 |
|----------|--------|-----------------|--------------|----------|----------|
| Iron | ppm | ASTM D5185m >50 | 1 | <1 | --- |
| Chromium | ppm | ASTM D5185m >5 | <1 | 0 | --- |
| Nickel | ppm | ASTM D5185m | <1 | 0 | --- |
| Titanium | ppm | ASTM D5185m | <1 | 0 | --- |
| Silver | ppm | ASTM D5185m | <1 | 0 | --- |
| Aluminum | ppm | ASTM D5185m >15 | 2 | 0 | --- |
| Lead | ppm | ASTM D5185m >65 | <1 | <1 | --- |
| Copper | ppm | ASTM D5185m >65 | 26 | 0 | --- |
| Tin | ppm | ASTM D5185m >10 | <1 | 0 | --- |
| Antimony | ppm | ASTM D5185m | --- | 0 | --- |
| Vanadium | ppm | ASTM D5185m | <1 | 0 | --- |
| Cadmium | ppm | ASTM D5185m | <1 | 0 | --- |

ADDITIVES

| | method | limit/base | current | history1 | history2 |
|------------|--------|------------------|--------------|----------|----------|
| Boron | ppm | ASTM D5185m 1.5 | 0 | 0 | --- |
| Barium | ppm | ASTM D5185m 0 | 0 | 0 | --- |
| Molybdenum | ppm | ASTM D5185m 0 | <1 | 0 | --- |
| Manganese | ppm | ASTM D5185m 0.3 | <1 | 0 | --- |
| Magnesium | ppm | ASTM D5185m 0 | <1 | 0 | --- |
| Calcium | ppm | ASTM D5185m 0 | 3 | 0 | --- |
| Phosphorus | ppm | ASTM D5185m 406 | 144 | 19 | --- |
| Zinc | ppm | ASTM D5185m 0 | 19 | 10 | --- |
| Sulfur | ppm | ASTM D5185m 1283 | 0 | 27 | --- |

CONTAMINANTS

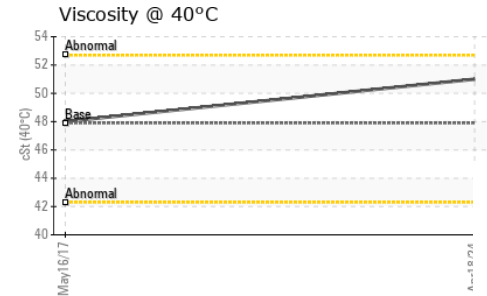
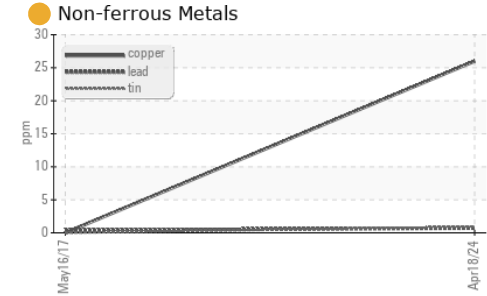
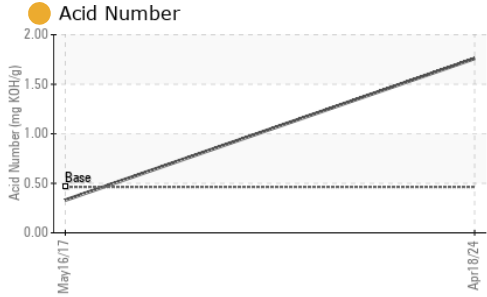
| | method | limit/base | current | history1 | history2 |
|-----------|--------|-----------------|--------------|----------|----------|
| Silicon | ppm | ASTM D5185m >35 | <1 | 0 | --- |
| Sodium | ppm | ASTM D5185m | 0 | 0 | --- |
| Potassium | ppm | ASTM D5185m >20 | 2 | 0 | --- |

FLUID DEGRADATION

| | method | limit/base | current | history1 | history2 |
|------------------|----------|------------------|-------------|----------|----------|
| Acid Number (AN) | mg KOH/g | ASTM D8045 0.463 | 1.76 | 0.330 | --- |



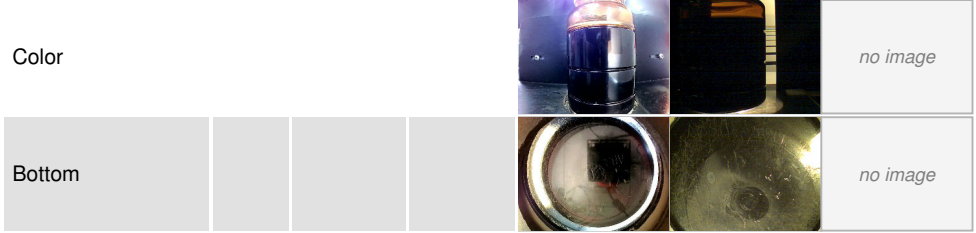
OIL ANALYSIS REPORT



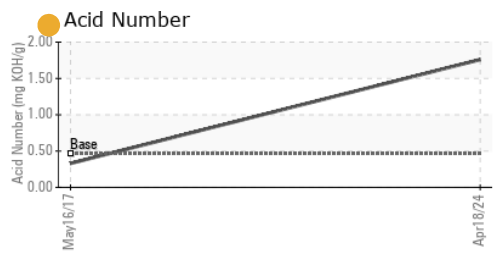
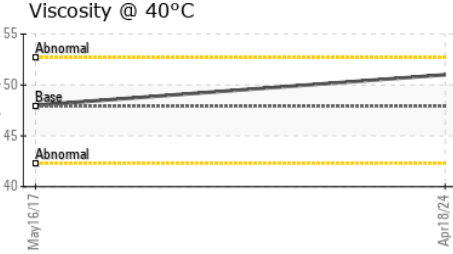
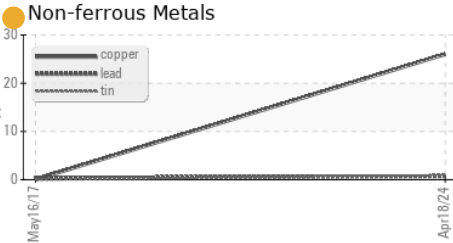
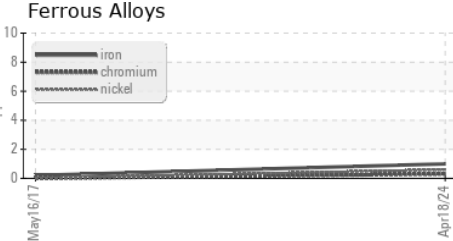
| VISUAL | method | limit/base | current | history1 | history2 |
|------------------|--------|------------|---------|----------|----------|
| White Metal | scalar | *Visual | NONE | NONE | --- |
| Yellow Metal | scalar | *Visual | NONE | NONE | --- |
| Precipitate | scalar | *Visual | NONE | NONE | --- |
| Silt | scalar | *Visual | NONE | NONE | --- |
| Debris | scalar | *Visual | NONE | NONE | --- |
| Sand/Dirt | scalar | *Visual | NONE | NONE | --- |
| Appearance | scalar | *Visual | NORML | NORML | --- |
| Odor | scalar | *Visual | NORML | NORML | --- |
| Emulsified Water | scalar | *Visual | >0.1 | NEG | --- |
| Free Water | scalar | *Visual | | NEG | --- |

| FLUID PROPERTIES | method | limit/base | current | history1 | history2 |
|------------------|--------|------------|---------|----------|----------|
| Visc @ 40°C | cSt | ASTM D445 | 47.9 | 51.0 | 48.01 |

| SAMPLE IMAGES | method | limit/base | current | history1 | history2 |
|---------------|--------|------------|---------|----------|----------|
|---------------|--------|------------|---------|----------|----------|



GRAPHS



Laboratory : WearCheck USA - 501 Madison Ave., Cary, NC 27513
Sample No. : UCH06184443 **Received** : 20 May 2024
Lab Number : **06184443** **Tested** : 21 May 2024
Unique Number : 11035769 **Diagnosed** : 22 May 2024 - Jonathan Hester
Test Package : IND 2

AIR TECHNOLOGIES INC (DET-LIV)
 11771 BELDEN CT
 LIVONIA, MI
 US 48150-1446
 Contact: MICHAEL WYSZCZELSKI
 michael.wyszczelski@otcindustrial.com

To discuss this sample report, contact Customer Service at 1-800-237-1369.
 * - Denotes test methods that are outside of the ISO 17025 scope of accreditation.
 Statements of conformity to specifications are based on the simple acceptance decision rule (JCGM 106:2012)