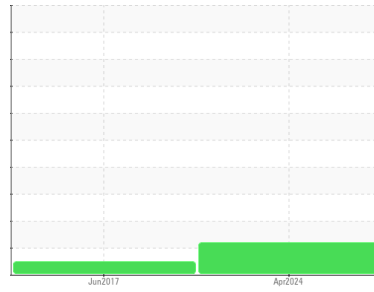




OIL ANALYSIS REPORT

Sample Rating Trend



DEGRADATION



Area

ROTO XTEND

Machine Id

ATLAS COPCO API619925 - TG FLUIDS 6

Component

Compressor

DIAGNOSIS

● Recommendation

The oil is near the end of its useful service life, recommend schedule an oil change. Resample at the next service interval to monitor.

Wear

All component wear rates are normal.

Contamination

There is no indication of any contamination in the oil.

● Fluid Condition

The AN level is above the recommended limit.

SAMPLE INFORMATION

	method	limit/base	current	history1	history2
Sample Number	Client Info		UCH06184446	UCH04249508	---
Sample Date	Client Info		18 Apr 2024	25 Jun 2017	---
Machine Age	hrs	Client Info	25715	9791	---
Oil Age	hrs	Client Info	3534	1906	---
Oil Changed	Client Info		Not Chngd	N/A	---
Sample Status			ATTENTION	NORMAL	---

CONTAMINATION

	method	limit/base	current	history1	history2
Water	WC Method	>0.1	NEG	NEG	---

WEAR METALS

	method	limit/base	current	history1	history2
Iron	ppm	ASTM D5185m >50	1	1	---
Chromium	ppm	ASTM D5185m >5	<1	0	---
Nickel	ppm	ASTM D5185m	<1	<1	---
Titanium	ppm	ASTM D5185m	<1	0	---
Silver	ppm	ASTM D5185m	<1	0	---
Aluminum	ppm	ASTM D5185m >15	3	<1	---
Lead	ppm	ASTM D5185m >65	2	<1	---
Copper	ppm	ASTM D5185m >65	9	<1	---
Tin	ppm	ASTM D5185m >10	<1	0	---
Antimony	ppm	ASTM D5185m	---	0	---
Vanadium	ppm	ASTM D5185m	<1	0	---
Cadmium	ppm	ASTM D5185m	<1	0	---

ADDITIVES

	method	limit/base	current	history1	history2
Boron	ppm	ASTM D5185m	0	0	---
Barium	ppm	ASTM D5185m	0	0	---
Molybdenum	ppm	ASTM D5185m	<1	0	---
Manganese	ppm	ASTM D5185m	<1	0	---
Magnesium	ppm	ASTM D5185m	<1	0	---
Calcium	ppm	ASTM D5185m	3	0	---
Phosphorus	ppm	ASTM D5185m	107	11	---
Zinc	ppm	ASTM D5185m	19	4	---
Sulfur	ppm	ASTM D5185m	0	0	---

CONTAMINANTS

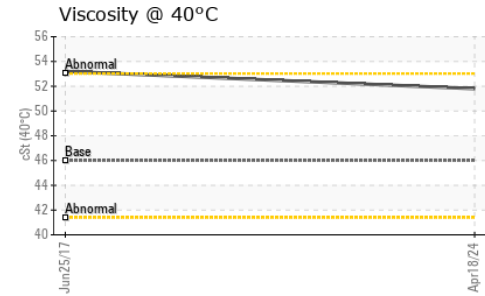
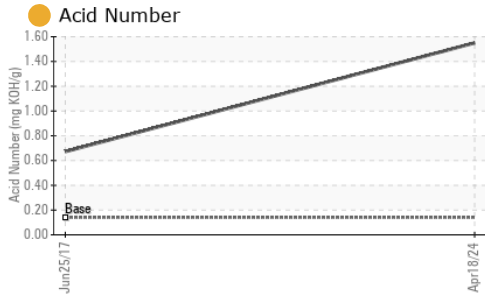
	method	limit/base	current	history1	history2
Silicon	ppm	ASTM D5185m >35	<1	0	---
Sodium	ppm	ASTM D5185m	1	<1	---
Potassium	ppm	ASTM D5185m >20	3	0	---

FLUID DEGRADATION

	method	limit/base	current	history1	history2
Acid Number (AN)	mg KOH/g	ASTM D8045 0.14	● 1.55	0.672	---



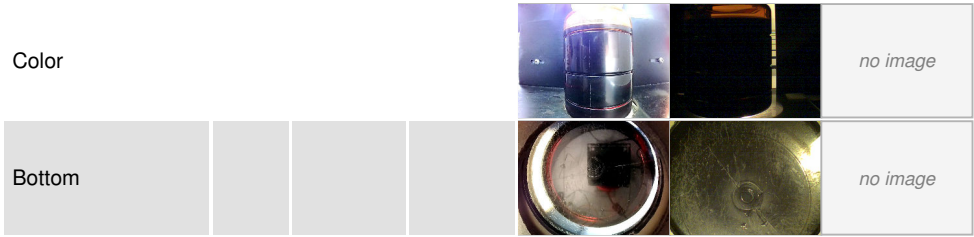
OIL ANALYSIS REPORT



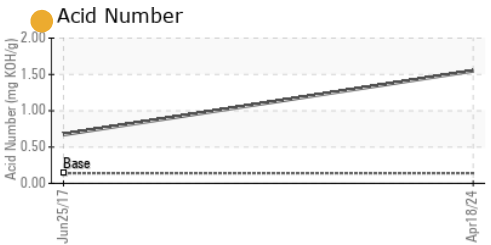
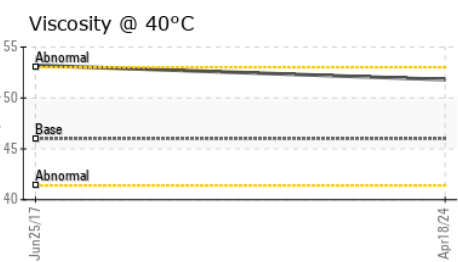
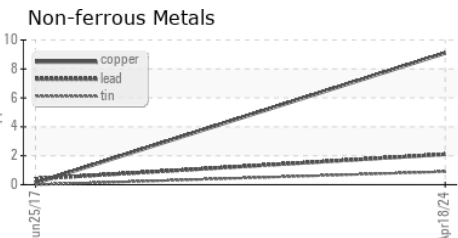
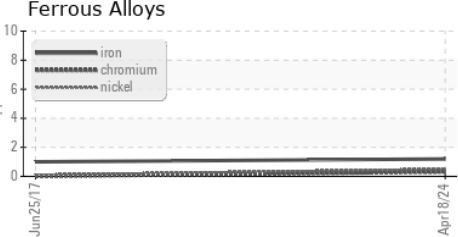
VISUAL	method	limit/base	current	history1	history2
White Metal	scalar	*Visual	NONE	NONE	---
Yellow Metal	scalar	*Visual	NONE	NONE	---
Precipitate	scalar	*Visual	NONE	NONE	---
Silt	scalar	*Visual	NONE	NONE	---
Debris	scalar	*Visual	NONE	NONE	---
Sand/Dirt	scalar	*Visual	NONE	NONE	---
Appearance	scalar	*Visual	NORML	NORML	---
Odor	scalar	*Visual	NORML	NORML	---
Emulsified Water	scalar	*Visual	>0.1	NEG	---
Free Water	scalar	*Visual		NEG	---

FLUID PROPERTIES	method	limit/base	current	history1	history2
Visc @ 40°C	cSt	ASTM D445 46	51.8	53.2	---

SAMPLE IMAGES



GRAPHS



Laboratory : WearCheck USA - 501 Madison Ave., Cary, NC 27513
Sample No. : UCH06184446 **Received** : 20 May 2024
Lab Number : 06184446 **Tested** : 21 May 2024
Unique Number : 11035772 **Diagnosed** : 22 May 2024 - Don Baldrige
Test Package : IND 2

AIR TECHNOLOGIES INC (DET-LIV)
 11771 BELDEN CT
 LIVONIA, MI
 US 48150-1446
 Contact: MICHAEL WYSZCZELSKI
 michael.wyszczelski@otcindustrial.com
 T: (734)762-9247
 F: (734)762-9248

To discuss this sample report, contact Customer Service at 1-800-237-1369.

* - Denotes test methods that are outside of the ISO 17025 scope of accreditation.

Statements of conformity to specifications are based on the simple acceptance decision rule (JCGM 106:2012)