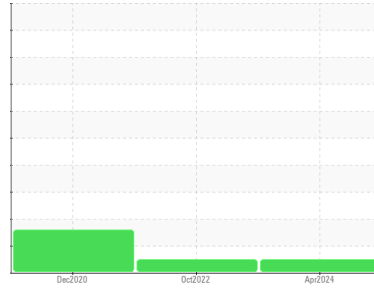




OIL ANALYSIS REPORT

Sample Rating Trend



NORMAL



Machine Id
2526
 Component
Transmission (Auto)
 Fluid
WOLFSHEAD ATF (--- QTS)

DIAGNOSIS

Recommendation

Resample at the next service interval to monitor.

Wear

All component wear rates are normal.

Contamination

There is no indication of any contamination in the fluid.

Fluid Condition

The AN level is acceptable for this fluid. The condition of the fluid is suitable for further service.

SAMPLE INFORMATION

	method	limit/base	current	history1	history2
Sample Number	Client Info		RW0005552	RW0003926	RW0001670
Sample Date	Client Info		17 Apr 2024	18 Oct 2022	04 Dec 2020
Machine Age	hrs	Client Info	10837	8068	4181
Oil Age	hrs	Client Info	2750	1000	4181
Oil Changed	Client Info		Changed	Changed	Changed
Sample Status			NORMAL	NORMAL	ABNORMAL

CONTAMINATION

	method	limit/base	current	history1	history2
Water	WC Method	>0.1	NEG	NEG	NEG

WEAR METALS

	method	limit/base	current	history1	history2
Iron	ppm	ASTM D5185m >160	55	75	▲ 178
Chromium	ppm	ASTM D5185m >5	<1	<1	<1
Nickel	ppm	ASTM D5185m >5	<1	0	<1
Titanium	ppm	ASTM D5185m	<1	0	0
Silver	ppm	ASTM D5185m >5	<1	0	0
Aluminum	ppm	ASTM D5185m >50	11	17	38
Lead	ppm	ASTM D5185m >50	7	20	▲ 72
Copper	ppm	ASTM D5185m >225	18	25	10
Tin	ppm	ASTM D5185m >10	3	4	6
Antimony	ppm	ASTM D5185m	---	---	0
Vanadium	ppm	ASTM D5185m	<1	0	0
Cadmium	ppm	ASTM D5185m	<1	0	0

ADDITIVES

	method	limit/base	current	history1	history2
Boron	ppm	ASTM D5185m	256	203	94
Barium	ppm	ASTM D5185m	0	0	0
Molybdenum	ppm	ASTM D5185m	2	0	<1
Manganese	ppm	ASTM D5185m	1	<1	2
Magnesium	ppm	ASTM D5185m	2	0	0
Calcium	ppm	ASTM D5185m	245	127	26
Phosphorus	ppm	ASTM D5185m	545	443	238
Zinc	ppm	ASTM D5185m	17	12	44
Sulfur	ppm	ASTM D5185m	1878	1850	272

CONTAMINANTS

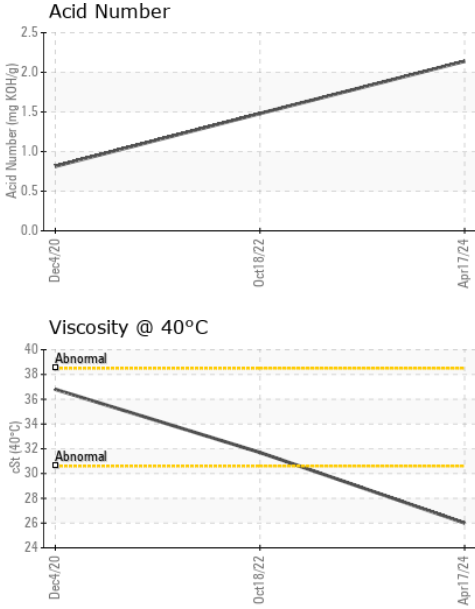
	method	limit/base	current	history1	history2
Silicon	ppm	ASTM D5185m >20	6	6	3
Sodium	ppm	ASTM D5185m	6	2	8
Potassium	ppm	ASTM D5185m >20	2	0	4

FLUID DEGRADATION

	method	limit/base	current	history1	history2
Acid Number (AN)	mg KOH/g	ASTM D8045	2.14	1.48	0.814



OIL ANALYSIS REPORT

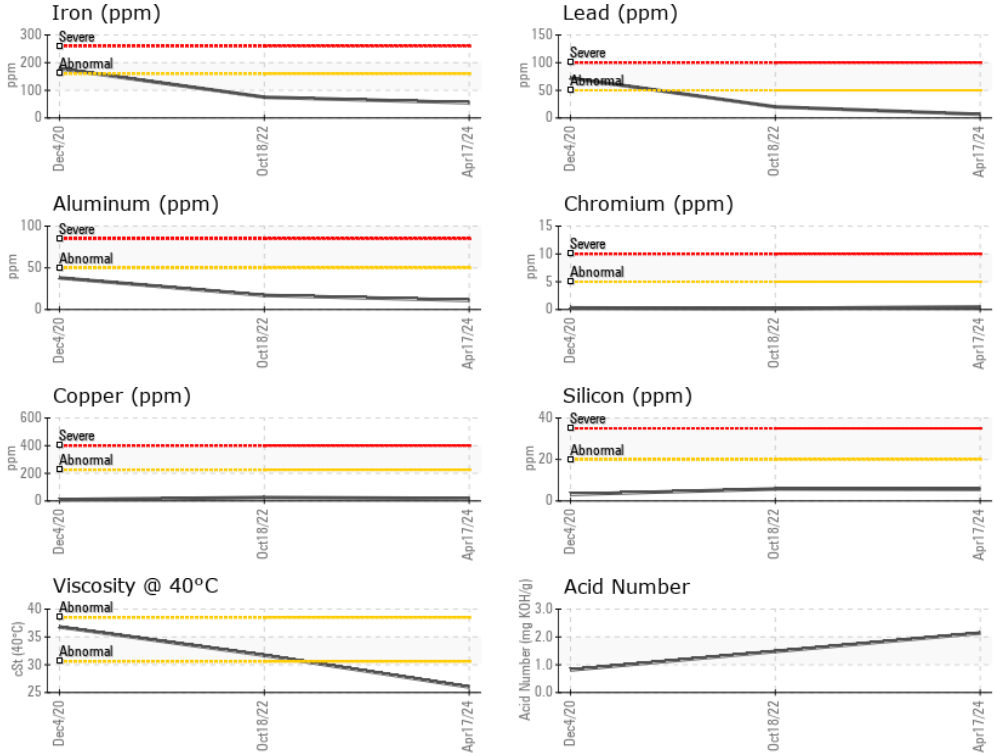


VISUAL	method	limit/base	current	history1	history2
White Metal	scalar	*Visual	NONE	NONE	NONE
Yellow Metal	scalar	*Visual	NONE	NONE	NONE
Precipitate	scalar	*Visual	NONE	NONE	NONE
Silt	scalar	*Visual	NONE	NONE	NONE
Debris	scalar	*Visual	NONE	NONE	NONE
Sand/Dirt	scalar	*Visual	NONE	NONE	NONE
Appearance	scalar	*Visual	NORML	NORML	NORML
Odor	scalar	*Visual	NORML	NORML	NORML
Emulsified Water	scalar	*Visual	>0.1	NEG	NEG
Free Water	scalar	*Visual		NEG	NEG

FLUID PROPERTIES	method	limit/base	current	history1	history2
Visc @ 40°C	cSt	ASTM D445	26.0	31.7	36.8

SAMPLE IMAGES	method	limit/base	current	history1	history2
Color				no image	no image
Bottom				no image	no image

GRAPHS



Laboratory : WearCheck USA - 501 Madison Ave., Cary, NC 27513
Sample No. : RW0005552 **Received** : 20 May 2024
Lab Number : **06184528** **Tested** : 21 May 2024
Unique Number : 11035854 **Diagnosed** : 22 May 2024 - Jonathan Hester
Test Package : MOB 2

NEWKIRK ELECTRIC
 1875 ROBERTS ST.
 MUSKEGON, MI
 US 49442
 Contact: ERIC KING
 ewking@newkirk-electric.com

To discuss this sample report, contact Customer Service at 1-800-237-1369.

* - Denotes test methods that are outside of the ISO 17025 scope of accreditation.

Statements of conformity to specifications are based on the simple acceptance decision rule (JCGM 106:2012)

T: (231)206-6131

F: (231)724-4090