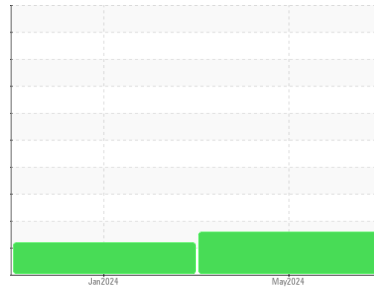




OIL ANALYSIS REPORT

Sample Rating Trend



WATER



Area

NOT GIVEN

Machine Id

INGERSOLL RAND PLANT AIR 5 - TULSA CEMENT (S/N VA1073)

Component

Compressor

DIAGNOSIS

● Recommendation

We advise that you follow the water drain-off procedure for this component. We recommend an early resample to monitor this condition.

Wear

All component wear rates are normal.

● Contamination

There is a moderate concentration of water present in the oil.

Fluid Condition

The AN level is acceptable for this fluid.

SAMPLE INFORMATION

	method	limit/base	current	history1	history2
Sample Number	Client Info		UCH06185098	UCH06077012	---
Sample Date	Client Info		08 May 2024	26 Jan 2024	---
Machine Age	hrs	Client Info	0	5152	---
Oil Age	hrs	Client Info	2000	8000	---
Oil Changed	Client Info		N/A	Changed	---
Sample Status			ATTENTION	ATTENTION	---

WEAR METALS

	method	limit/base	current	history1	history2
Iron	ppm	ASTM D5185m >50	0	0	---
Chromium	ppm	ASTM D5185m >10	0	0	---
Nickel	ppm	ASTM D5185m	0	<1	---
Titanium	ppm	ASTM D5185m	0	0	---
Silver	ppm	ASTM D5185m	0	0	---
Aluminum	ppm	ASTM D5185m >25	<1	1	---
Lead	ppm	ASTM D5185m >25	0	<1	---
Copper	ppm	ASTM D5185m >50	2	2	---
Tin	ppm	ASTM D5185m >15	<1	<1	---
Vanadium	ppm	ASTM D5185m	0	0	---
Cadmium	ppm	ASTM D5185m	0	<1	---

ADDITIVES

	method	limit/base	current	history1	history2
Boron	ppm	ASTM D5185m	0	0	---
Barium	ppm	ASTM D5185m	495	538	---
Molybdenum	ppm	ASTM D5185m	0	0	---
Manganese	ppm	ASTM D5185m	<1	<1	---
Magnesium	ppm	ASTM D5185m	<1	3	---
Calcium	ppm	ASTM D5185m	12	18	---
Phosphorus	ppm	ASTM D5185m	61	62	---
Zinc	ppm	ASTM D5185m	0	33	---
Sulfur	ppm	ASTM D5185m	611	424	---

CONTAMINANTS

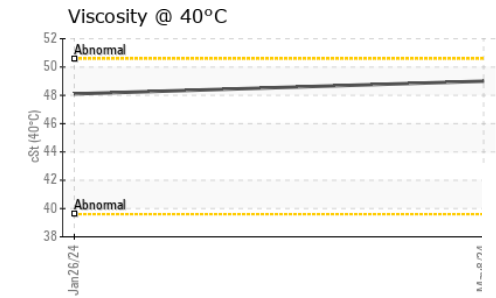
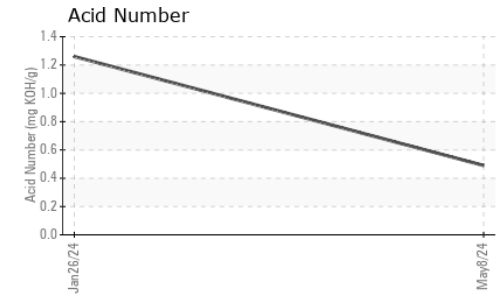
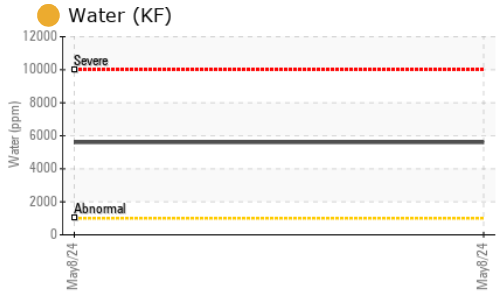
	method	limit/base	current	history1	history2
Silicon	ppm	ASTM D5185m >25	1	<1	---
Sodium	ppm	ASTM D5185m	39	40	---
Potassium	ppm	ASTM D5185m >20	4	6	---
Water	%	ASTM D6304 >0.1	● 0.560	---	---
ppm Water	ppm	ASTM D6304 >1000	● 5600	---	---

FLUID DEGRADATION

	method	limit/base	current	history1	history2
Acid Number (AN)	mg KOH/g	ASTM D8045	0.49	● 1.26	---



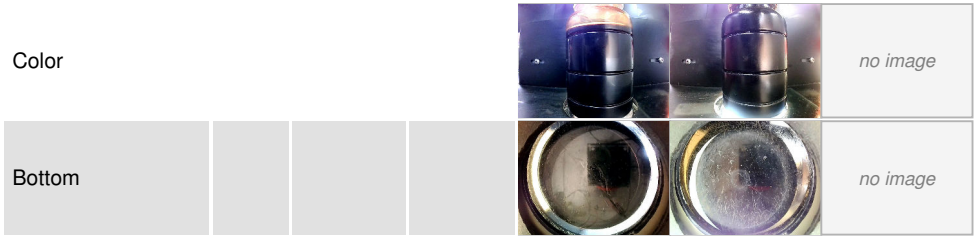
OIL ANALYSIS REPORT



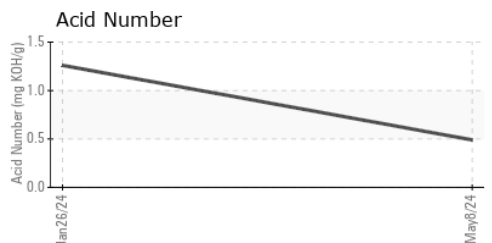
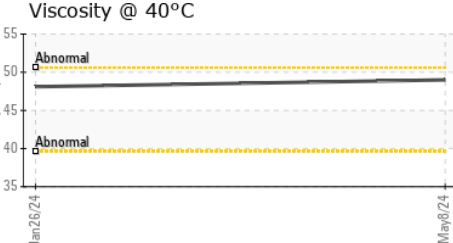
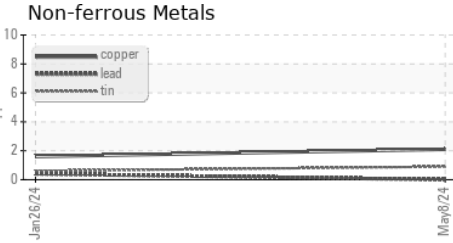
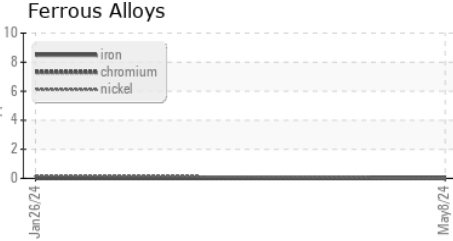
VISUAL	method	limit/base	current	history1	history2
White Metal	scalar	*Visual	NONE	NONE	---
Yellow Metal	scalar	*Visual	NONE	NONE	---
Precipitate	scalar	*Visual	NONE	NONE	---
Silt	scalar	*Visual	NONE	NONE	---
Debris	scalar	*Visual	NONE	NONE	---
Sand/Dirt	scalar	*Visual	NONE	NONE	---
Appearance	scalar	*Visual	NORML	NORML	---
Odor	scalar	*Visual	NORML	NORML	---
Emulsified Water	scalar	*Visual	>0.1	0.2%	NEG
Free Water	scalar	*Visual		NEG	NEG

FLUID PROPERTIES	method	limit/base	current	history1	history2
Visc @ 40°C	cSt	ASTM D445	49.0	48.1	---

SAMPLE IMAGES	method	limit/base	current	history1	history2
---------------	--------	------------	---------	----------	----------



GRAPHS



Laboratory : WearCheck USA - 501 Madison Ave., Cary, NC 27513
Sample No. : UCH06185098 **Received** : 20 May 2024
Lab Number : 06185098 **Tested** : 22 May 2024
Unique Number : 11036424 **Diagnosed** : 22 May 2024 - Don Baldrige
Test Package : IND 2 (Additional Tests: KF)

GREEN COUNTY COMPRESSOR SERVICE
 11974 E 530 RD
 CLAREMORE, OK
 US 74019
 Contact: ASHLEY PIGUET
 ashley@gccs.us.com

To discuss this sample report, contact Customer Service at 1-800-237-1369.
 * - Denotes test methods that are outside of the ISO 17025 scope of accreditation.
 Statements of conformity to specifications are based on the simple acceptance decision rule (JCGM 106:2012)