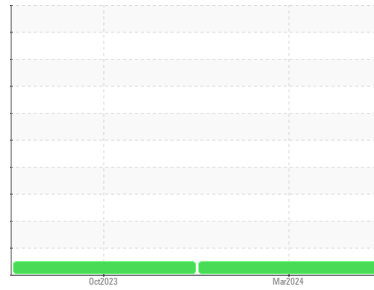




OIL ANALYSIS REPORT

Sample Rating Trend



NORMAL



Area

NOT GIVEN

Machine Id

KAISHAN 071808812U

Component

Compressor

DIAGNOSIS

Recommendation

The filter change at the time of sampling has been noted. Resample at the next service interval to monitor.

Wear

All component wear rates are normal.

Contamination

Moderate concentration of visible dirt/debris present in the oil.

Fluid Condition

The AN level is acceptable for this fluid. The condition of the oil is suitable for further service.

| SAMPLE INFORMATION | | method | limit/base | current | history1 | history2 |
|--------------------|-------------|-------------|------------|--------------------|-------------|----------|
| Sample Number | Client Info | | | UHC06185173 | UCH06031697 | --- |
| Sample Date | Client Info | | | 26 Mar 2024 | 25 Oct 2023 | --- |
| Machine Age | hrs | Client Info | | 11250 | 10792 | --- |
| Oil Age | hrs | Client Info | | 0 | 2940 | --- |
| Oil Changed | Client Info | | | Not Changed | Changed | --- |
| Sample Status | | | | NORMAL | NORMAL | --- |

| CONTAMINATION | | method | limit/base | current | history1 | history2 |
|---------------|-----------|--------|------------|------------|----------|----------|
| Water | WC Method | | >0.1 | NEG | NEG | --- |

| WEAR METALS | | method | limit/base | current | history1 | history2 |
|-------------|-----|-------------|------------|--------------|----------|----------|
| Iron | ppm | ASTM D5185m | >50 | 2 | 2 | --- |
| Chromium | ppm | ASTM D5185m | >10 | <1 | <1 | --- |
| Nickel | ppm | ASTM D5185m | | 0 | <1 | --- |
| Titanium | ppm | ASTM D5185m | | <1 | <1 | --- |
| Silver | ppm | ASTM D5185m | | <1 | 0 | --- |
| Aluminum | ppm | ASTM D5185m | >25 | 1 | 1 | --- |
| Lead | ppm | ASTM D5185m | >25 | <1 | <1 | --- |
| Copper | ppm | ASTM D5185m | >50 | 1 | <1 | --- |
| Tin | ppm | ASTM D5185m | >15 | <1 | <1 | --- |
| Vanadium | ppm | ASTM D5185m | | <1 | 0 | --- |
| Cadmium | ppm | ASTM D5185m | | 0 | <1 | --- |

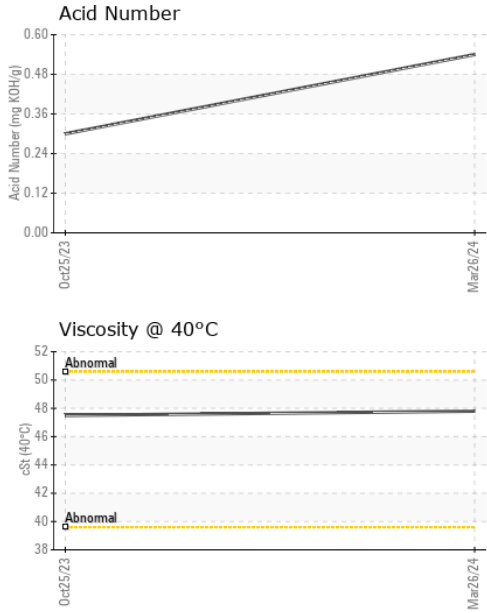
| ADDITIVES | | method | limit/base | current | history1 | history2 |
|------------|-----|-------------|------------|--------------|----------|----------|
| Boron | ppm | ASTM D5185m | | 0 | 0 | --- |
| Barium | ppm | ASTM D5185m | | 12 | 11 | --- |
| Molybdenum | ppm | ASTM D5185m | | 0 | <1 | --- |
| Manganese | ppm | ASTM D5185m | | 0 | <1 | --- |
| Magnesium | ppm | ASTM D5185m | | <1 | 0 | --- |
| Calcium | ppm | ASTM D5185m | | 0 | <1 | --- |
| Phosphorus | ppm | ASTM D5185m | | 306 | 34 | --- |
| Zinc | ppm | ASTM D5185m | | 1 | 8 | --- |
| Sulfur | ppm | ASTM D5185m | | 461 | 0 | --- |

| CONTAMINANTS | | method | limit/base | current | history1 | history2 |
|--------------|-----|-------------|------------|----------|----------|----------|
| Silicon | ppm | ASTM D5185m | >25 | 8 | 11 | --- |
| Sodium | ppm | ASTM D5185m | | 0 | 0 | --- |
| Potassium | ppm | ASTM D5185m | >20 | 1 | 1 | --- |

| FLUID DEGRADATION | | method | limit/base | current | history1 | history2 |
|-------------------|----------|------------|------------|-------------|----------|----------|
| Acid Number (AN) | mg KOH/g | ASTM D8045 | | 0.54 | 0.30 | --- |



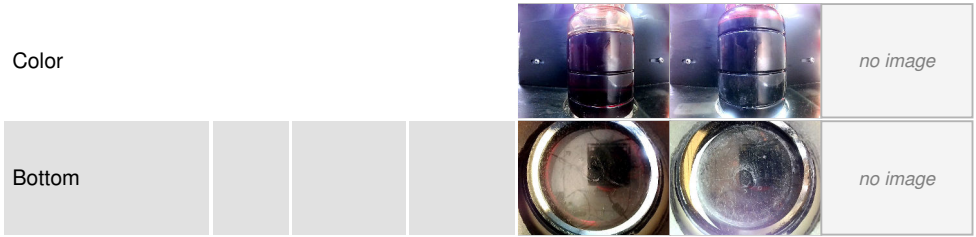
OIL ANALYSIS REPORT



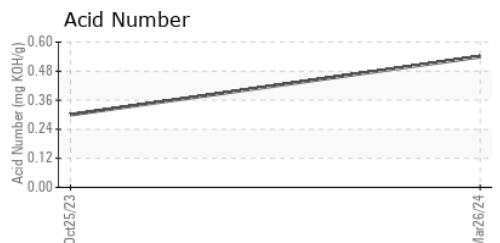
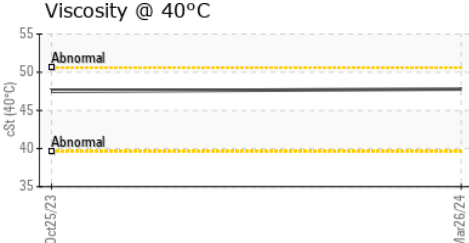
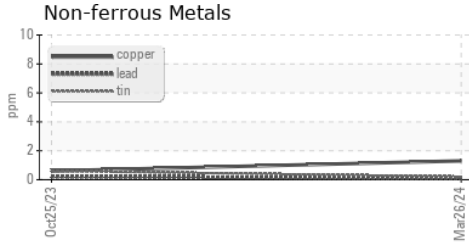
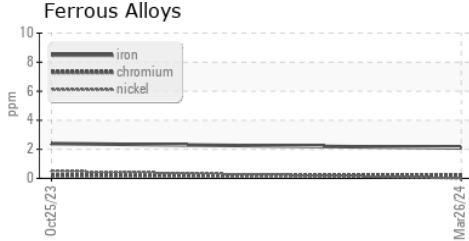
| VISUAL | method | limit/base | current | history1 | history2 |
|------------------|--------|------------|---------|--------------|----------|
| White Metal | scalar | *Visual | NONE | NONE | --- |
| Yellow Metal | scalar | *Visual | NONE | NONE | --- |
| Precipitate | scalar | *Visual | NONE | NONE | --- |
| Silt | scalar | *Visual | NONE | NONE | --- |
| Debris | scalar | *Visual | NONE | MODER | LIGHT |
| Sand/Dirt | scalar | *Visual | NONE | NONE | --- |
| Appearance | scalar | *Visual | NORML | NORML | --- |
| Odor | scalar | *Visual | NORML | NORML | --- |
| Emulsified Water | scalar | *Visual | >0.1 | NEG | NEG |
| Free Water | scalar | *Visual | | NEG | NEG |

| FLUID PROPERTIES | method | limit/base | current | history1 | history2 |
|------------------|--------|------------|-------------|----------|----------|
| Visc @ 40°C | cSt | ASTM D445 | 47.8 | 47.5 | --- |

| SAMPLE IMAGES | method | limit/base | current | history1 | history2 |
|---------------|--------|------------|---------|----------|----------|
|---------------|--------|------------|---------|----------|----------|



GRAPHS



Laboratory : WearCheck USA - 501 Madison Ave., Cary, NC 27513
Sample No. : UHC06185173 **Received** : 20 May 2024
Lab Number : **06185173** **Tested** : 21 May 2024
Unique Number : 11036499 **Diagnosed** : 22 May 2024 - Sean Felton
Test Package : IND 2

ATLANTA AIR COMPRESSOR
 123 MERCHANTS PARK DR
 HOSCHTON, GA 30548
 Contact: Derik Bray
 Derik@atlantaaircompressor.com
 T: (470)252-9952
 F: x:

To discuss this sample report, contact Customer Service at 1-800-237-1369.
 * - Denotes test methods that are outside of the ISO 17025 scope of accreditation.
 Statements of conformity to specifications are based on the simple acceptance decision rule (JCGM 106:2012)