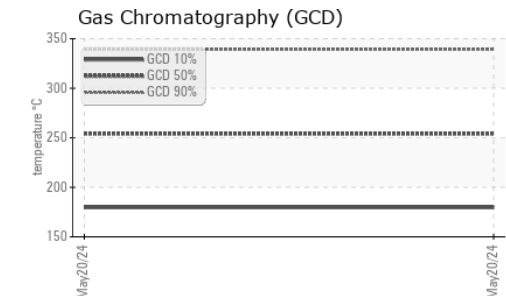
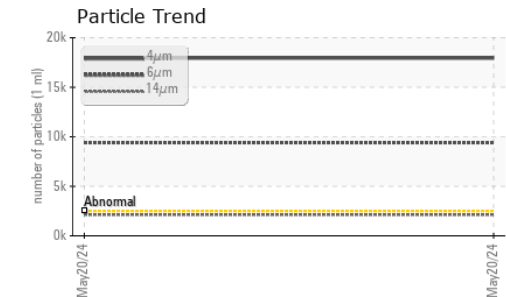
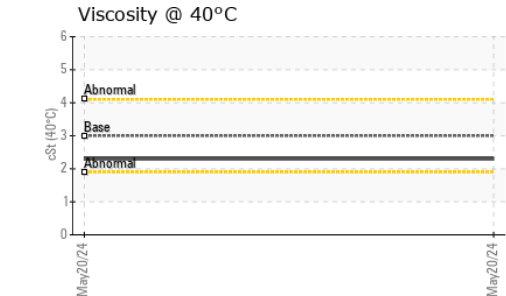
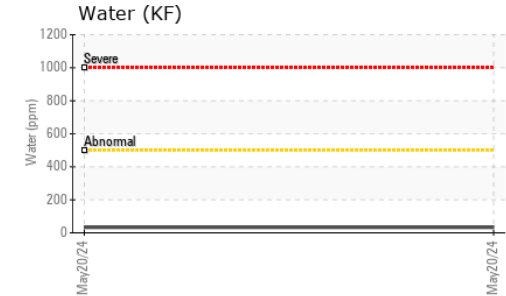
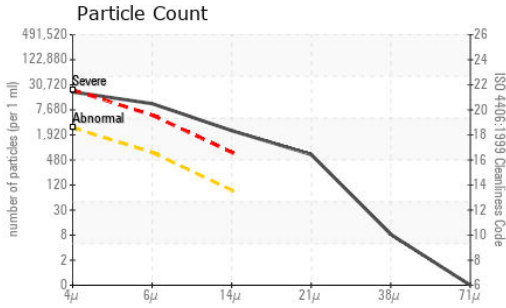






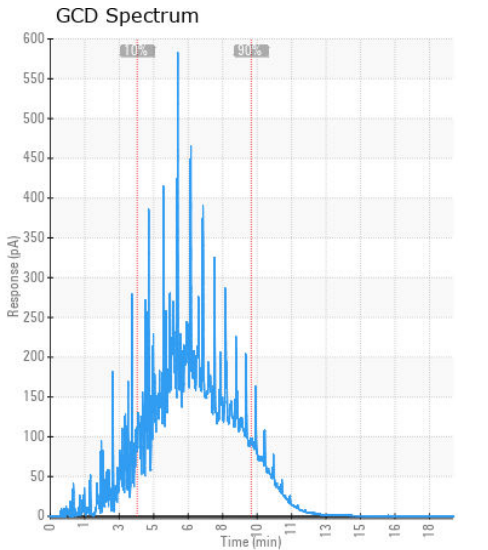
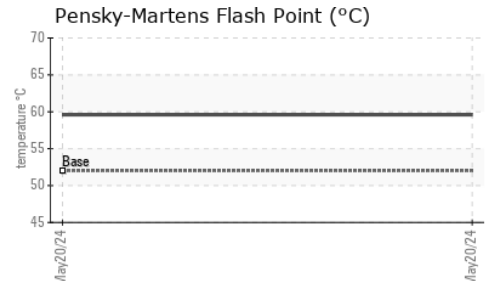
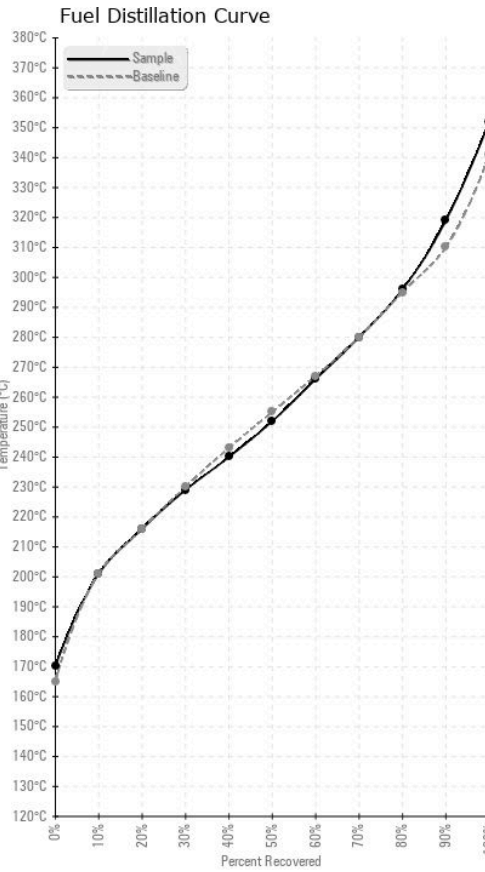
# FUEL REPORT



HEAVY METALS	method	limit/base	current	history1	history2	
Aluminum	ppm	ASTM D5185m	<0.1	0	---	---
Nickel	ppm	ASTM D5185m	<0.1	<1	---	---
Lead	ppm	ASTM D5185m	<0.1	<1	---	---
Vanadium	ppm	ASTM D5185m	<0.1	0	---	---
Iron	ppm	ASTM D5185m	<0.1	0	---	---
Calcium	ppm	ASTM D5185m	<0.1	1	---	---
Magnesium	ppm	ASTM D5185m	<0.1	<1	---	---
Phosphorus	ppm	ASTM D5185m	<0.1	0	---	---
Zinc	ppm	ASTM D5185m	<0.1	0	---	---

SAMPLE IMAGES	method	limit/base	current	history1	history2
Color				no image	no image
Bottom				no image	no image

## GRAPHS



**Laboratory** : WearCheck USA - 501 Madison Ave., Cary, NC 27513  
**Sample No.** : KT0001538 **Received** : 28 May 2024  
**Lab Number** : 06193472 **Tested** : 05 Jun 2024  
**Unique Number** : 11050224 **Diagnosed** : 05 Jun 2024 - Doug Bogart  
**Test Package** : DF-2 ( Additional Tests: Fuel, Screen )

**RONSON EQUIPMENT**  
 18030 WICKER BLVD  
 LOWELL, IN  
 US 46356

Certificate L2367 **Contact:** T. FREEBORN  
 To discuss this sample report, contact Customer Service at 1-800-237-1369. **tfreeborn@ronsonequipment.com**  
 \* - Denotes test methods that are outside of the ISO 17025 scope of accreditation. **T: (219)696-5680**  
 Statements of conformity to specifications are based on the simple acceptance decision rule (JCGM 106:2012) **F:**