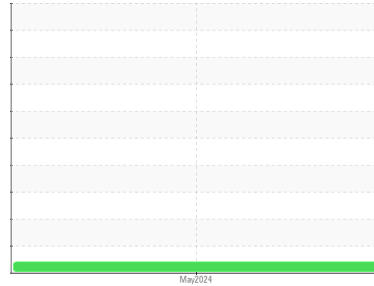


# OIL ANALYSIS REPORT

Sample Rating Trend



VISCOSITY



Machine Id  
**12 MONTERREY EMULSIDORES**  
 Component  
**Heat Transfer Fluid**  
 Fluid  
 {not provided} (--- GAL)

**DIAGNOSIS**

▲ **Recommendation**

The fluid is suitable for further service. Resample at the next service interval to monitor. All tests and evaluation performed at WearCheck Canada.

▲ **Fluid Condition**

Visc @ 40°C is abnormally low.

SAMPLE INFORMATION		method	limit/base	current	history1	history2
Sample Number	Client Info			<b>TO10003469</b>	---	---
Sample Date	Client Info			<b>27 May 2024</b>	---	---
Machine Age	hrs	Client Info		<b>0</b>	---	---
Oil Age	hrs	Client Info		<b>0</b>	---	---
Oil Changed	Client Info			<b>N/A</b>	---	---
Sample Status				<b>ABNORMAL</b>	---	---

WEAR METALS		method	limit/base	current	history1	history2
Iron	ppm	ASTM D5185m	>200	<b>29</b>	---	---
Chromium	ppm	ASTM D5185m	>21	<b>0</b>	---	---
Nickel	ppm	ASTM D5185m	>21	<b>0</b>	---	---
Titanium	ppm	ASTM D5185m	>21	<b>0</b>	---	---
Silver	ppm	ASTM D5185m	>21	<b>0</b>	---	---
Aluminum	ppm	ASTM D5185m	>21	<b>0</b>	---	---
Lead	ppm	ASTM D5185m	>21	<b>0</b>	---	---
Copper	ppm	ASTM D5185m	>21	<b>&lt;1</b>	---	---
Tin	ppm	ASTM D5185m	>21	<b>0</b>	---	---
Antimony	ppm	ASTM D5185m	>21	<b>0</b>	---	---
Vanadium	ppm	ASTM D5185m		<b>0</b>	---	---
Beryllium	ppm	ASTM D5185m		<b>0</b>	---	---
Cadmium	ppm	ASTM D5185m		<b>0</b>	---	---

ADDITIVES		method	limit/base	current	history1	history2
Boron	ppm	ASTM D5185m		<b>&lt;1</b>	---	---
Barium	ppm	ASTM D5185m		<b>0</b>	---	---
Molybdenum	ppm	ASTM D5185m		<b>0</b>	---	---
Manganese	ppm	ASTM D5185m		<b>&lt;1</b>	---	---
Magnesium	ppm	ASTM D5185m		<b>1</b>	---	---
Calcium	ppm	ASTM D5185m		<b>10</b>	---	---
Phosphorus	ppm	ASTM D5185m		<b>17</b>	---	---
Zinc	ppm	ASTM D5185m		<b>4</b>	---	---
Sulfur	ppm	ASTM D5185m		<b>2824</b>	---	---
Lithium	ppm	ASTM D5185m		<b>&lt;1</b>	---	---

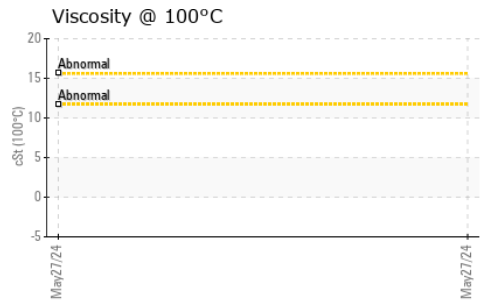
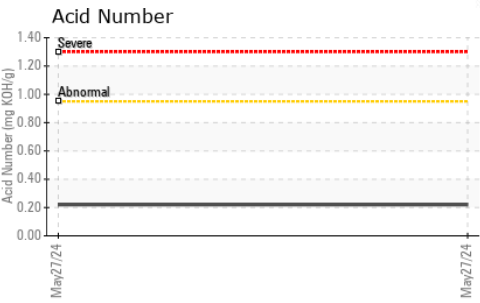
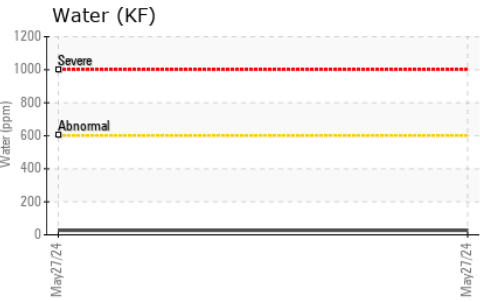
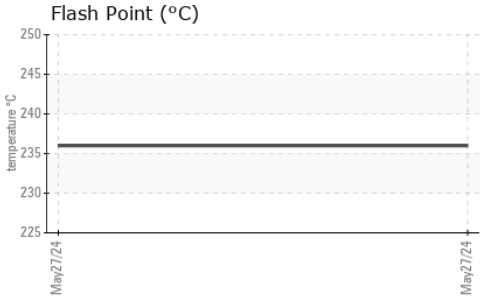
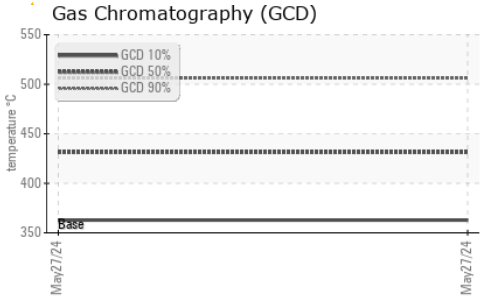
CONTAMINANTS		method	limit/base	current	history1	history2
Silicon	ppm	ASTM D5185m	>25	<b>1</b>	---	---
Sodium	ppm	ASTM D5185m	>21	<b>&lt;1</b>	---	---
Potassium	ppm	ASTM D5185m	>20	<b>&lt;1</b>	---	---
Water	%	ASTM D6304	>0.0601	<b>0.003</b>	---	---
ppm Water	ppm	ASTM D6304	>601	<b>27</b>	---	---

FLUID DEGRADATION		method	limit/base	current	history1	history2
Acid Number (AN)	mg KOH/g	ASTM D8045		<b>0.22</b>	---	---

FLUID PROPERTIES		method	limit/base	current	history1	history2
Visc @ 40°C	cSt	ASTM D445		▲ <b>38.3</b>	---	---
COC Flash Point	°C	ASTM D92		<b>236</b>	---	---

SEDIMENT		method	limit/base	current	history1	history2
Pentane Insolubles	%	*ASTM D893		<b>0.079</b>	---	---

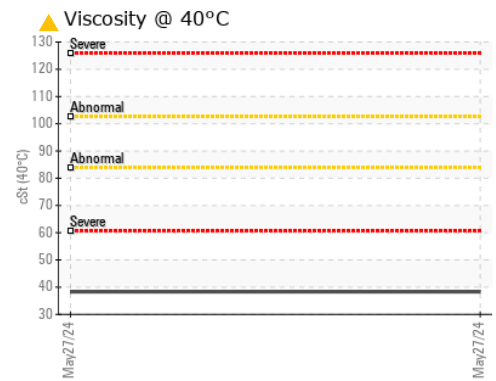
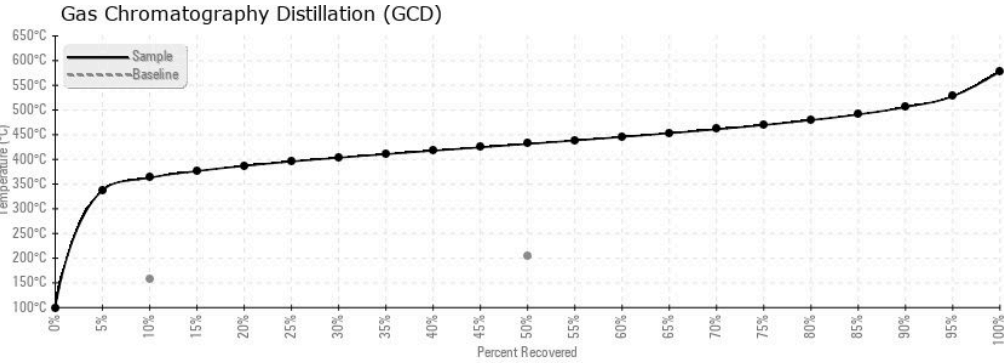
# OIL ANALYSIS REPORT



SIMULATED DISTILLATION (GCD)	method	limit/base	current	history1	history2
(GCD) % < 335°C	°C	*ASTM D2887	<b>4.20</b>	---	---
(GCD) Initial Boiling Point	°C	*ASTM D2887	<b>122</b>	---	---
(GCD) 5% Distillation Point	°C	*ASTM D2887	<b>337.8</b>	---	---
(GCD) 10% Distillation Point	°C	*ASTM D2887	<b>157</b>	---	---
(GCD) 20% Distillation Point	°C	*ASTM D2887	<b>386.8</b>	---	---
(GCD) 30% Distillation Point	°C	*ASTM D2887	<b>403.4</b>	---	---
(GCD) 40% Distillation Point	°C	*ASTM D2887	<b>417.6</b>	---	---
(GCD) 50% Distillation Point	°C	*ASTM D2887	<b>204</b>	---	---
(GCD) 60% Distillation Point	°C	*ASTM D2887	<b>445.5</b>	---	---
(GCD) 70% Distillation Point	°C	*ASTM D2887	<b>460.9</b>	---	---
(GCD) 80% Distillation Point	°C	*ASTM D2887	<b>479.5</b>	---	---
(GCD) 90% Distillation Point	°C	*ASTM D2887	<b>505.9</b>	---	---
(GCD) FB% Distillation Point	°C	*ASTM D2887	<b>322</b>	---	---

SAMPLE IMAGES	method	limit/base	current	history1	history2
Color			no image	no image	no image
Bottom			no image	no image	no image

## GRAPHS



**Laboratory** : WearCheck USA - 501 Madison Ave., Cary, NC 27513  
**Sample No.** : TO10003469  
**Lab Number** : 06193483  
**Unique Number** : 11050235  
**Test Package** : IND 2 ( Additional Tests: COC Flash, GCD, KF, KV100, PntInsol, VI )

**ERGON - MONTERREY**  
 ANTIGUO CAMINO VILLA DE GARCIA, NO 260 STA  
 CATARINA, ZZ  
 MX 66350  
 Contact: RAUL REYES  
 raul.reyes@ergon.com

To discuss this sample report, contact Customer Service at 1-800-237-1369.  
 \* - Denotes test methods that are outside of the ISO 17025 scope of accreditation.  
 Statements of conformity to specifications are based on the simple acceptance decision rule (JCGM 106:2012)