

OIL ANALYSIS REPORT

Sample Rating Trend



DEGRADATION



Machine Id
EL SALTA
Component
Heat Transfer Fluid
Fluid
MINERAL (1 LTR)

DIAGNOSIS

Recommendation

The fluid is suitable for further service. Resample at the next service interval to monitor. All tests and evaluation performed at WearCheck Canada.

Contamination

Pentane Insolubles levels are abnormally high.

Fluid Condition

Acid Number (AN) is abnormally high. Visc @ 40°C is abnormally low.

SAMPLE INFORMATION method limit/base current history1 history2

Sample Number	Client Info		TO10003415	---	---
Sample Date	Client Info		14 Mar 2024	---	---
Machine Age	hrs	Client Info	0	---	---
Oil Age	hrs	Client Info	0	---	---
Oil Changed		Client Info	N/A	---	---
Sample Status			ABNORMAL	---	---

WEAR METALS method limit/base current history1 history2

Iron	ppm	ASTM D5185m	>200	7	---	---
Chromium	ppm	ASTM D5185m	>21	0	---	---
Nickel	ppm	ASTM D5185m	>21	<1	---	---
Titanium	ppm	ASTM D5185m	>21	0	---	---
Silver	ppm	ASTM D5185m	>21	0	---	---
Aluminum	ppm	ASTM D5185m	>21	0	---	---
Lead	ppm	ASTM D5185m	>21	0	---	---
Copper	ppm	ASTM D5185m	>21	0	---	---
Tin	ppm	ASTM D5185m	>21	0	---	---
Antimony	ppm	ASTM D5185m	>21	0	---	---
Vanadium	ppm	ASTM D5185m		1	---	---
Beryllium	ppm	ASTM D5185m		0	---	---
Cadmium	ppm	ASTM D5185m		0	---	---

ADDITIVES method limit/base current history1 history2

Boron	ppm	ASTM D5185m		<1	---	---
Barium	ppm	ASTM D5185m		0	---	---
Molybdenum	ppm	ASTM D5185m		0	---	---
Manganese	ppm	ASTM D5185m		0	---	---
Magnesium	ppm	ASTM D5185m		<1	---	---
Calcium	ppm	ASTM D5185m		<1	---	---
Phosphorus	ppm	ASTM D5185m		<1	---	---
Zinc	ppm	ASTM D5185m		<1	---	---
Sulfur	ppm	ASTM D5185m		5541	---	---
Lithium	ppm	ASTM D5185m		<1	---	---

CONTAMINANTS method limit/base current history1 history2

Silicon	ppm	ASTM D5185m	>25	0	---	---
Sodium	ppm	ASTM D5185m	>21	<1	---	---
Potassium	ppm	ASTM D5185m	>20	<1	---	---
Water	%	ASTM D6304	>0.0601	0.003	---	---
ppm Water	ppm	ASTM D6304	>601	38	---	---

FLUID DEGRADATION method limit/base current history1 history2

Acid Number (AN)	mg KOH/g	ASTM D8045		▲ 0.53	---	---
------------------	----------	------------	--	---------------	-----	-----

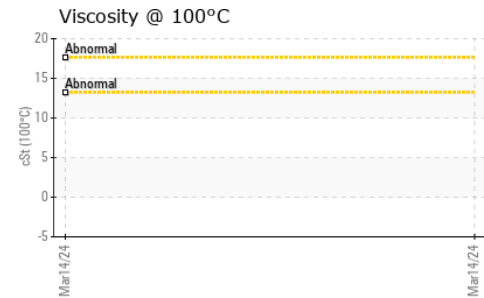
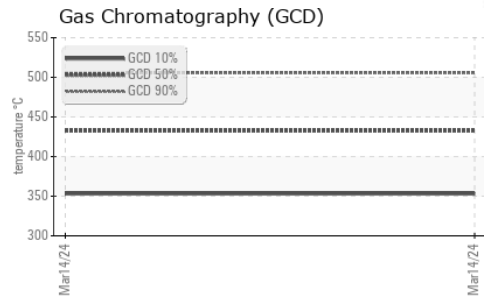
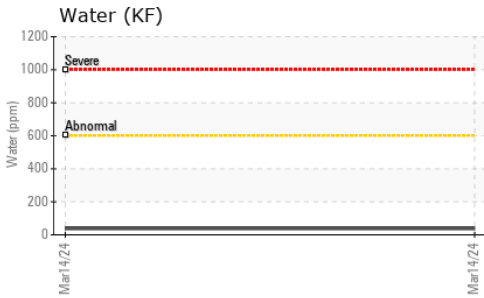
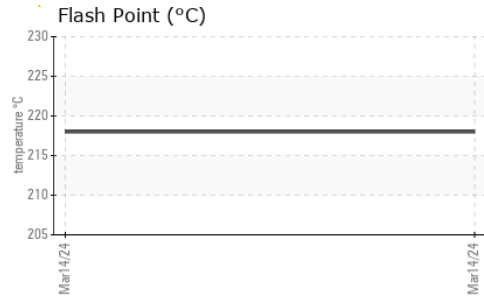
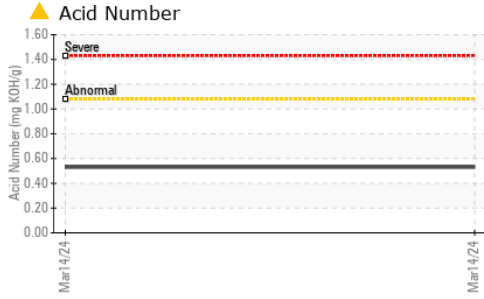
FLUID PROPERTIES method limit/base current history1 history2

Visc @ 40°C	cSt	ASTM D445		▲ 54.2	---	---
COC Flash Point	°C	ASTM D92		218	---	---

SEDIMENT method limit/base current history1 history2

Pentane Insolubles	%	*ASTM D893		▲ 0.578	---	---
--------------------	---	------------	--	----------------	-----	-----

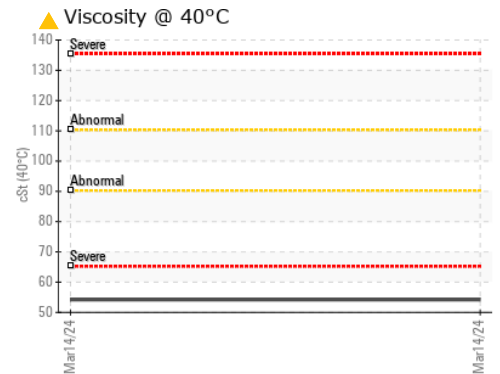
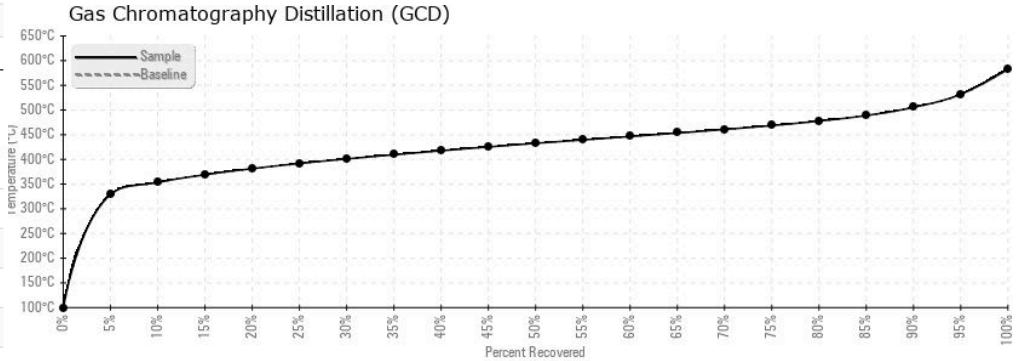
OIL ANALYSIS REPORT



SIMULATED DISTILLATION (GCD)	method	limit/base	current	history1	history2
(GCD) % < 335°C	°C	*ASTM D2887	5.50	---	---
(GCD) Initial Boiling Point	°C	*ASTM D2887	98.3	---	---
(GCD) 5% Distillation Point	°C	*ASTM D2887	329.2	---	---
(GCD) 10% Distillation Point	°C	*ASTM D2887	353.2	---	---
(GCD) 20% Distillation Point	°C	*ASTM D2887	381.3	---	---
(GCD) 30% Distillation Point	°C	*ASTM D2887	401.0	---	---
(GCD) 40% Distillation Point	°C	*ASTM D2887	417.6	---	---
(GCD) 50% Distillation Point	°C	*ASTM D2887	432.6	---	---
(GCD) 60% Distillation Point	°C	*ASTM D2887	446.4	---	---
(GCD) 70% Distillation Point	°C	*ASTM D2887	460.7	---	---
(GCD) 80% Distillation Point	°C	*ASTM D2887	477.7	---	---
(GCD) 90% Distillation Point	°C	*ASTM D2887	505.5	---	---
(GCD) FBP% Distillation Point	°C	*ASTM D2887	582.8	---	---

SAMPLE IMAGES	method	limit/base	current	history1	history2
Color			no image	no image	no image
Bottom			no image	no image	no image

GRAPHS



Certificate L2367

Laboratory : WearCheck USA - 501 Madison Ave., Cary, NC 27513
Sample No. : TO10003415
Lab Number : 06193484
Unique Number : 11050236
Test Package : IND 2 (Additional Tests: COC Flash, GCD, KF, KV100, PntInsol, VI)

Received : 28 May 2024
Tested : 17 Jun 2024
Diagnosed : 17 Jun 2024 - Doug Bogart

ERGON - GUADALAJARA
 CARRETERA GUADALAJARA-EL CASTILLO, KM 8.5 PARQUE INDUSTRIAL
 EL SALTO, ZZ
 MX 45680
 Contact: CESAR ARRANAGA
 cesar.arranaga@ergon.com

To discuss this sample report, contact Customer Service at 1-800-237-1369.

* - Denotes test methods that are outside of the ISO 17025 scope of accreditation.

Statements of conformity to specifications are based on the simple acceptance decision rule (JCGM 106:2012)

T:
F: