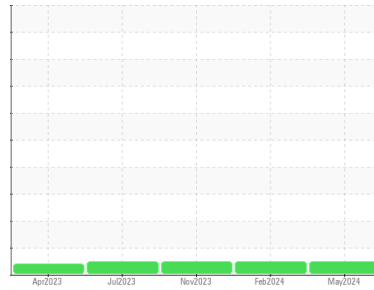




# OIL ANALYSIS REPORT

## Sample Rating Trend



**NORMAL**



Machine Id  
**MLU-3**  
 Component  
**Outboard Pump**  
 Fluid  
**ROYAL PURPLE SYNFILM GT 32 (--- GAL)**

### DIAGNOSIS

#### Recommendation

Resample at the next service interval to monitor.

#### Wear

All component wear rates are normal.

#### Contamination

The water content is negligible. There is no indication of any contamination in the oil.

#### Fluid Condition

The AN level is acceptable for this fluid. The condition of the oil is suitable for further service.

SAMPLE INFORMATION		method	limit/base	current	history1	history2
Sample Number	Client Info			<b>RP0039841</b>	RP0036090	RP0032099
Sample Date	Client Info			<b>23 May 2024</b>	19 Feb 2024	01 Nov 2023
Machine Age	hrs	Client Info		<b>0</b>	0	0
Oil Age	hrs	Client Info		<b>0</b>	0	0
Oil Changed	Client Info			<b>N/A</b>	N/A	N/A
Sample Status				<b>NORMAL</b>	NORMAL	NORMAL

WEAR METALS		method	limit/base	current	history1	history2
Iron	ppm	ASTM D5185m	>90	<b>9</b>	1	6
Chromium	ppm	ASTM D5185m	>5	<b>&lt;1</b>	<1	0
Nickel	ppm	ASTM D5185m	>5	<b>&lt;1</b>	0	<1
Titanium	ppm	ASTM D5185m	>3	<b>&lt;1</b>	0	0
Silver	ppm	ASTM D5185m	>3	<b>1</b>	0	0
Aluminum	ppm	ASTM D5185m	>7	<b>1</b>	0	<1
Lead	ppm	ASTM D5185m	>12	<b>2</b>	0	1
Copper	ppm	ASTM D5185m	>30	<b>5</b>	4	4
Tin	ppm	ASTM D5185m	>9	<b>&lt;1</b>	0	<1
Vanadium	ppm	ASTM D5185m		<b>&lt;1</b>	0	0
Cadmium	ppm	ASTM D5185m		<b>&lt;1</b>	0	0

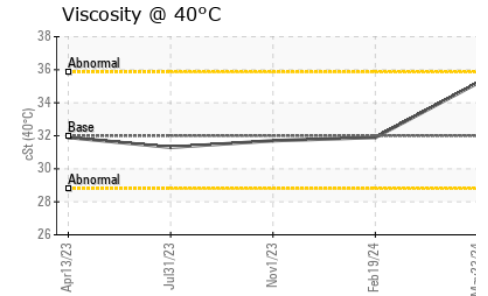
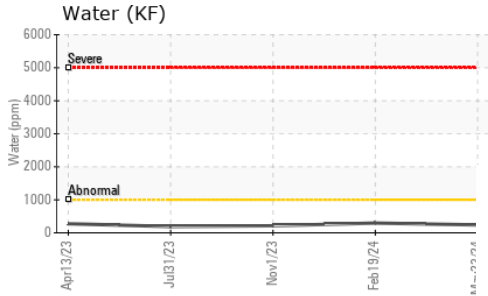
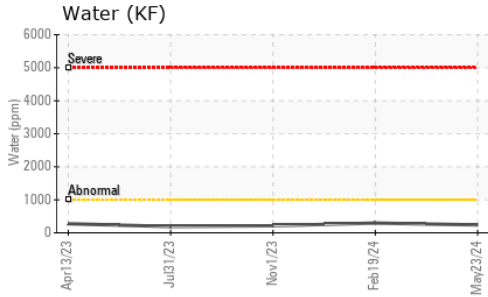
ADDITIVES		method	limit/base	current	history1	history2
Boron	ppm	ASTM D5185m		<b>0</b>	0	0
Barium	ppm	ASTM D5185m		<b>0</b>	0	0
Molybdenum	ppm	ASTM D5185m		<b>&lt;1</b>	0	0
Manganese	ppm	ASTM D5185m		<b>&lt;1</b>	0	0
Magnesium	ppm	ASTM D5185m		<b>63</b>	60	75
Calcium	ppm	ASTM D5185m		<b>0</b>	0	3
Phosphorus	ppm	ASTM D5185m		<b>3</b>	0	4
Zinc	ppm	ASTM D5185m		<b>0</b>	0	0

CONTAMINANTS		method	limit/base	current	history1	history2
Silicon	ppm	ASTM D5185m	>60	<b>2</b>	0	1
Sodium	ppm	ASTM D5185m		<b>4</b>	4	6
Potassium	ppm	ASTM D5185m	>20	<b>&lt;1</b>	0	<1
Water	%	ASTM D6304	>.1	<b>0.023</b>	0.029	0.021
ppm Water	ppm	ASTM D6304	>1000	<b>239</b>	296	213

FLUID DEGRADATION		method	limit/base	current	history1	history2
Acid Number (AN)	mg KOH/g	ASTM D8045		<b>0.38</b>	0.34	0.33

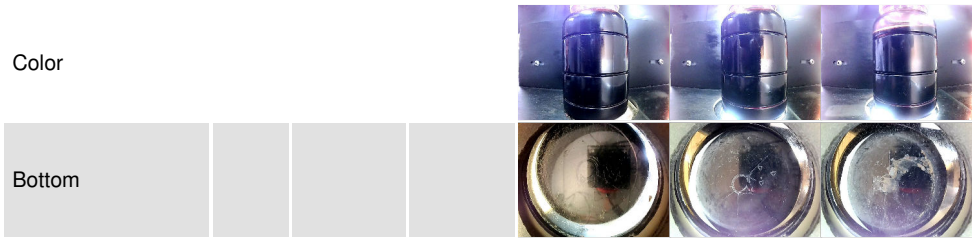
VISUAL		method	limit/base	current	history1	history2
White Metal	scalar	*Visual	NONE	<b>NONE</b>	NONE	LIGHT
Yellow Metal	scalar	*Visual	NONE	<b>NONE</b>	NONE	NONE
Precipitate	scalar	*Visual	NONE	<b>NONE</b>	NONE	NONE
Silt	scalar	*Visual	NONE	<b>NONE</b>	NONE	NONE
Debris	scalar	*Visual	NONE	<b>NONE</b>	NONE	NONE
Sand/Dirt	scalar	*Visual	NONE	<b>NONE</b>	NONE	NONE
Appearance	scalar	*Visual	NORML	<b>NORML</b>	NORML	NORML
Odor	scalar	*Visual	NORML	<b>NORML</b>	NORML	NORML
Emulsified Water	scalar	*Visual	>.1	<b>NEG</b>	NEG	NEG
Free Water	scalar	*Visual		<b>NEG</b>	NEG	NEG

# OIL ANALYSIS REPORT

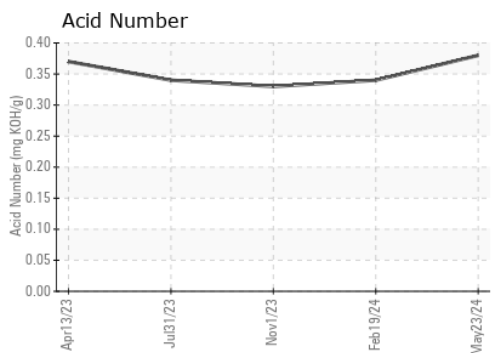
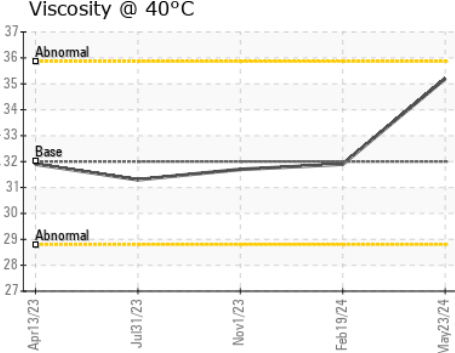
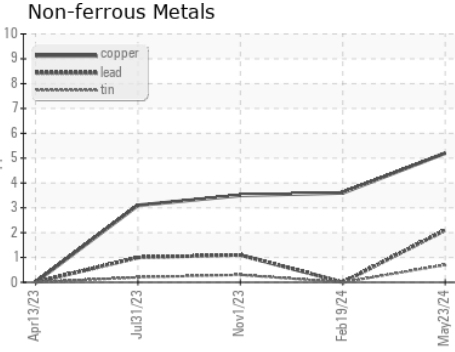
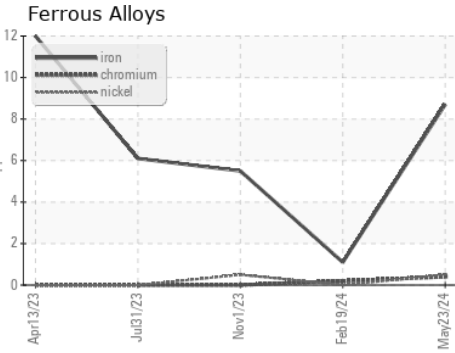


FLUID PROPERTIES		method	limit/base	current	history1	history2
Visc @ 40°C	cSt	ASTM D445	32	<b>35.2</b>	31.9	31.7

SAMPLE IMAGES		method	limit/base	current	history1	history2
---------------	--	--------	------------	---------	----------	----------



## GRAPHS



**Laboratory** : WearCheck USA - 501 Madison Ave., Cary, NC 27513  
**Sample No.** : RP0039841  
**Lab Number** : **06194085**  
**Unique Number** : 11056208  
**Test Package** : IND 2  
**Received** : 29 May 2024  
**Tested** : 30 May 2024  
**Diagnosed** : 31 May 2024 - Angela Borella

**ENERGY TRANSFER - LONGVIEW**  
 1010 COX DIARY RD  
 LONGVIEW, TX  
 US 75601  
 Contact: Service Manager

To discuss this sample report, contact Customer Service at 1-800-237-1369.

\* - Denotes test methods that are outside of the ISO 17025 scope of accreditation.

Statements of conformity to specifications are based on the simple acceptance decision rule (JCGM 106:2012)

T:  
F: