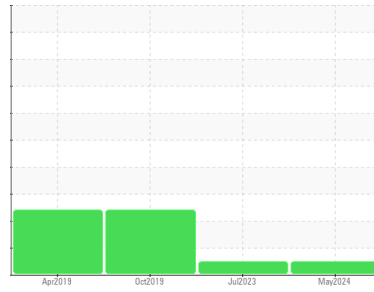




# OIL ANALYSIS REPORT

Sample Rating Trend



**NORMAL**



Machine Id  
**VOLVO PENTA 3194010488**  
 Component  
**Port IPS**  
 Fluid  
**VOLVO API GL-5 SAE 75W90 (--- GAL)**

## DIAGNOSIS

### Recommendation

Resample at the next service interval to monitor.

### Wear

All component wear rates are normal.

### Contamination

There is no indication of any contamination in the oil.

### Fluid Condition

The AN level is acceptable for this fluid. The condition of the oil is suitable for further service.

## SAMPLE INFORMATION

	method	limit/base	current	history1	history2
Sample Number	Client Info		<b>WC0944528</b>	WC0835976	WC0396133
Sample Date	Client Info		<b>18 May 2024</b>	09 Jul 2023	13 Oct 2019
Machine Age	hrs	Client Info	<b>400</b>	350	310
Oil Age	hrs	Client Info	<b>50</b>	115	60
Oil Changed	Client Info		<b>Not Changed</b>	Not Changed	Not Changed
Sample Status			<b>NORMAL</b>	NORMAL	ABNORMAL

## CONTAMINATION

	method	limit/base	current	history1	history2
Water	WC Method	>0.2	<b>NEG</b>	NEG	NEG

## WEAR METALS

	method	limit/base	current	history1	history2
Iron	ppm	ASTM D5185m >200	<b>26</b>	77	▲ 251
Chromium	ppm	ASTM D5185m >10	<b>&lt;1</b>	<1	2
Nickel	ppm	ASTM D5185m >10	<b>&lt;1</b>	1	3
Titanium	ppm	ASTM D5185m	<b>&lt;1</b>	0	0
Silver	ppm	ASTM D5185m	<b>1</b>	0	<1
Aluminum	ppm	ASTM D5185m	<b>1</b>	1	8
Lead	ppm	ASTM D5185m	<b>&lt;1</b>	<1	2
Copper	ppm	ASTM D5185m	<b>5</b>	13	20
Tin	ppm	ASTM D5185m	<b>&lt;1</b>	0	0
Antimony	ppm	ASTM D5185m >5	<b>---</b>	---	0
Vanadium	ppm	ASTM D5185m	<b>&lt;1</b>	0	<1
Cadmium	ppm	ASTM D5185m	<b>&lt;1</b>	0	0

## ADDITIVES

	method	limit/base	current	history1	history2
Boron	ppm	ASTM D5185m	<b>331</b>	339	314
Barium	ppm	ASTM D5185m	<b>0</b>	0	<1
Molybdenum	ppm	ASTM D5185m	<b>&lt;1</b>	<1	0
Manganese	ppm	ASTM D5185m	<b>&lt;1</b>	1	4
Magnesium	ppm	ASTM D5185m	<b>22</b>	2	3
Calcium	ppm	ASTM D5185m	<b>16</b>	11	9
Phosphorus	ppm	ASTM D5185m	<b>1263</b>	1338	1693
Zinc	ppm	ASTM D5185m	<b>28</b>	7	24
Sulfur	ppm	ASTM D5185m	<b>24603</b>	25651	14294

## CONTAMINANTS

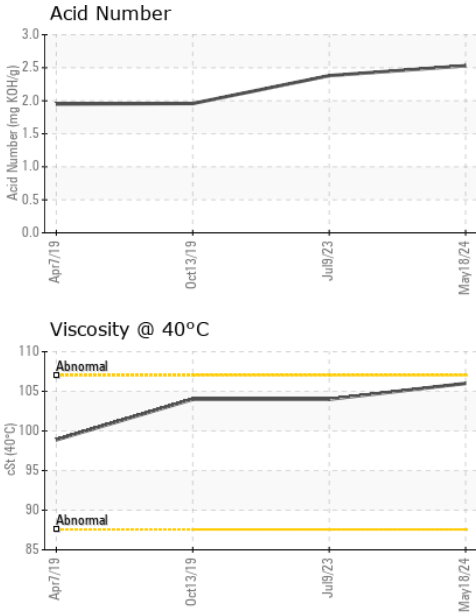
	method	limit/base	current	history1	history2
Silicon	ppm	ASTM D5185m	<b>11</b>	13	42
Sodium	ppm	ASTM D5185m	<b>2</b>	0	20
Potassium	ppm	ASTM D5185m >20	<b>&lt;1</b>	1	2

## FLUID DEGRADATION

	method	limit/base	current	history1	history2
Acid Number (AN)	mg KOH/g	ASTM D8045	<b>2.53</b>	2.38	1.958



# OIL ANALYSIS REPORT



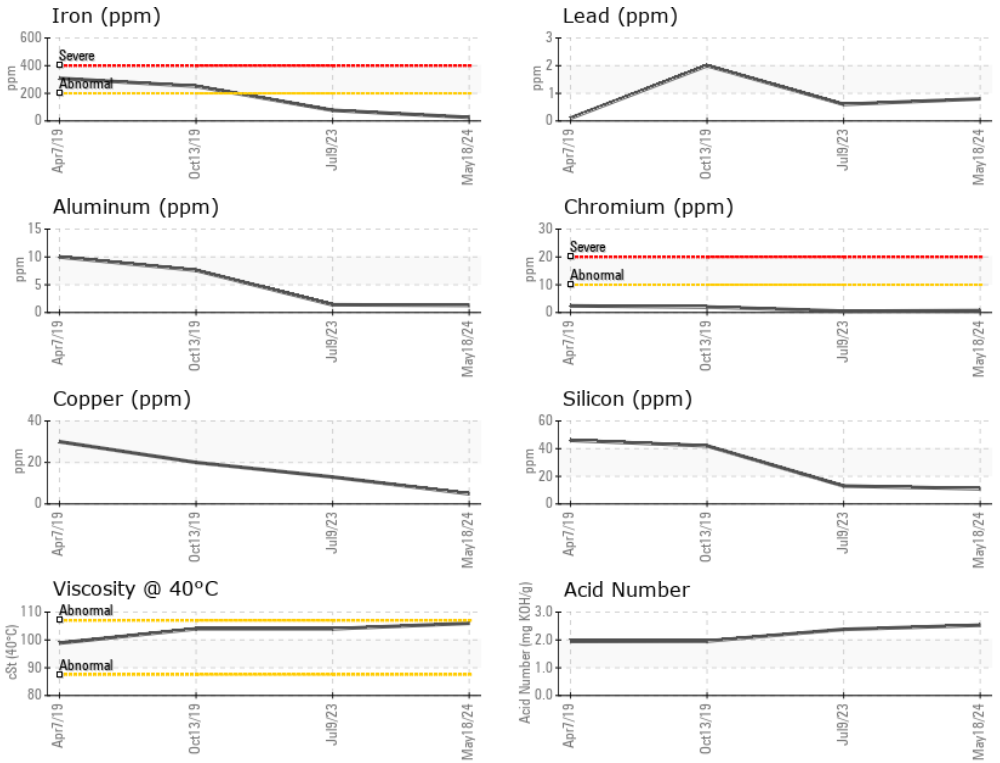
VISUAL	method	limit/base	current	history1	history2
White Metal	scalar	*Visual	NONE	NONE	NONE
Yellow Metal	scalar	*Visual	NONE	NONE	NONE
Precipitate	scalar	*Visual	NONE	NONE	NONE
Silt	scalar	*Visual	NONE	NONE	NONE
Debris	scalar	*Visual	NONE	LIGHT	NONE
Sand/Dirt	scalar	*Visual	NONE	NONE	NONE
Appearance	scalar	*Visual	NORML	NORML	NORML
Odor	scalar	*Visual	NORML	NORML	NORML
Emulsified Water	scalar	*Visual	>0.2	NEG	0.2%
Free Water	scalar	*Visual		NEG	NEG

FLUID PROPERTIES	method	limit/base	current	history1	history2
Visc @ 40°C	cSt	ASTM D445	<b>106</b>	104	104

SAMPLE IMAGES	method	limit/base	current	history1	history2
---------------	--------	------------	---------	----------	----------

Color		no image	no image
Bottom		no image	no image

## GRAPHS



**Laboratory** : WearCheck USA - 501 Madison Ave., Cary, NC 27513  
**Sample No.** : WC0944528      **Received** : 29 May 2024  
**Lab Number** : **06194224**      **Tested** : 30 May 2024  
**Unique Number** : 11056347      **Diagnosed** : 31 May 2024 - Angela Borella  
**Test Package** : MOB 2

**DELOITTE & TOUCHE LLP**  
 4501 SW 192ND TER  
 SOUTHWEST RANCHES, FL  
 US 33332  
 Contact: JAMES MINESSALE  
 jminessale@deloitte.com

To discuss this sample report, contact Customer Service at 1-800-237-1369.

\* - Denotes test methods that are outside of the ISO 17025 scope of accreditation.

Statements of conformity to specifications are based on the simple acceptance decision rule (JCGM 106:2012)