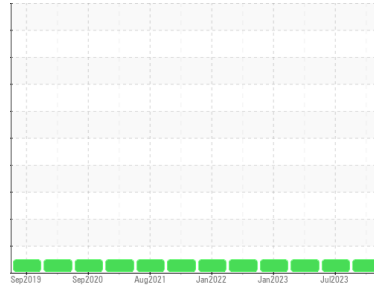




# OIL ANALYSIS REPORT

## Sample Rating Trend



**NORMAL**



Area

**TE-PAG 46**

Machine Id

**INGERSOLL RAND CBV250188 - CNX**

Component

**Compressor**

### DIAGNOSIS

#### Recommendation

Resample at the next service interval to monitor. The fluid was not specified, however, a fluid match indicates that this fluid is (GENERIC) COMPRESSOR OIL (PAG) ISO 46. Please confirm.

#### Wear

All component wear rates are normal.

#### Contamination

There is no indication of any contamination in the oil.

#### Fluid Condition

The AN level is acceptable for this fluid. The condition of the oil is suitable for further service.

### SAMPLE INFORMATION

	method	limit/base	current	history1	history2
Sample Number	Client Info		<b>UCH06195536</b>	UCH05903393	UCH05799249
Sample Date	Client Info		<b>16 May 2024</b>	17 Jul 2023	21 Mar 2023
Machine Age	hrs	Client Info	<b>8014</b>	6557	5557
Oil Age	hrs	Client Info	<b>2</b>	2045	600
Oil Changed	Client Info		<b>Changed</b>	Not Changd	N/A
Sample Status			<b>NORMAL</b>	NORMAL	NORMAL

### CONTAMINATION

	method	limit/base	current	history1	history2
Water	WC Method	>0.8	<b>NEG</b>	NEG	NEG

### WEAR METALS

	method	limit/base	current	history1	history2
Iron	ppm	ASTM D5185m >50	<b>1</b>	0	0
Chromium	ppm	ASTM D5185m >10	<b>0</b>	0	0
Nickel	ppm	ASTM D5185m	<b>0</b>	0	0
Titanium	ppm	ASTM D5185m	<b>0</b>	0	<1
Silver	ppm	ASTM D5185m	<b>0</b>	0	0
Aluminum	ppm	ASTM D5185m >25	<b>&lt;1</b>	0	0
Lead	ppm	ASTM D5185m >25	<b>0</b>	0	0
Copper	ppm	ASTM D5185m >50	<b>0</b>	0	0
Tin	ppm	ASTM D5185m >15	<b>&lt;1</b>	<1	<1
Vanadium	ppm	ASTM D5185m	<b>0</b>	<1	<1
Cadmium	ppm	ASTM D5185m	<b>0</b>	0	0

### ADDITIVES

	method	limit/base	current	history1	history2
Boron	ppm	ASTM D5185m 2	<b>0</b>	0	0
Barium	ppm	ASTM D5185m 525	<b>490</b>	801	494
Molybdenum	ppm	ASTM D5185m 10	<b>0</b>	0	0
Manganese	ppm	ASTM D5185m	<b>&lt;1</b>	0	<1
Magnesium	ppm	ASTM D5185m 5	<b>&lt;1</b>	1	4
Calcium	ppm	ASTM D5185m 10	<b>&lt;1</b>	0	0
Phosphorus	ppm	ASTM D5185m 250	<b>22</b>	0	5
Zinc	ppm	ASTM D5185m 100	<b>0</b>	0	<1
Sulfur	ppm	ASTM D5185m 400	<b>792</b>	403	410

### CONTAMINANTS

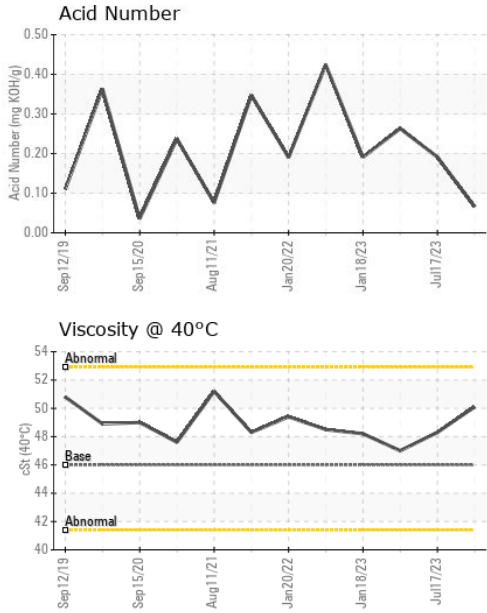
	method	limit/base	current	history1	history2
Silicon	ppm	ASTM D5185m >25	<b>4</b>	6	2
Sodium	ppm	ASTM D5185m	<b>&lt;1</b>	6	28
Potassium	ppm	ASTM D5185m >20	<b>1</b>	1	3

### FLUID DEGRADATION

	method	limit/base	current	history1	history2
Acid Number (AN)	mg KOH/g	ASTM D8045	<b>0.066</b>	0.191	0.263



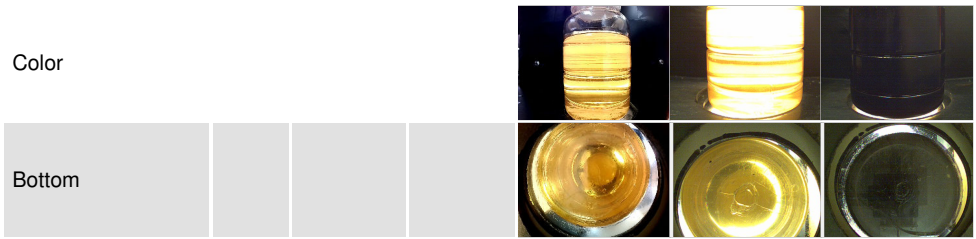
# OIL ANALYSIS REPORT



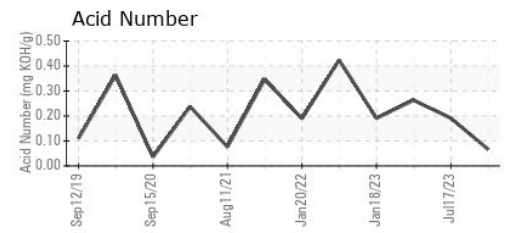
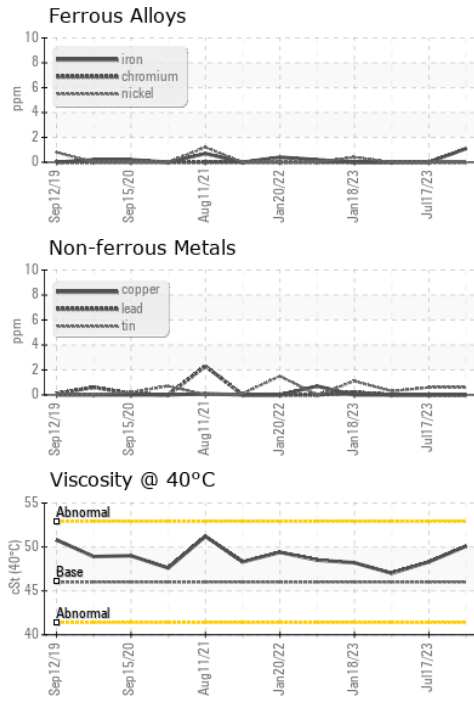
VISUAL	method	limit/base	current	history1	history2
White Metal	scalar	*Visual	NONE	NONE	LIGHT
Yellow Metal	scalar	*Visual	NONE	NONE	NONE
Precipitate	scalar	*Visual	NONE	NONE	NONE
Silt	scalar	*Visual	NONE	NONE	NONE
Debris	scalar	*Visual	NONE	NONE	LIGHT
Sand/Dirt	scalar	*Visual	NONE	NONE	NONE
Appearance	scalar	*Visual	NORML	NORML	NORML
Odor	scalar	*Visual	NORML	NORML	NORML
Emulsified Water	scalar	*Visual	>0.8	NEG	NEG
Free Water	scalar	*Visual		NEG	NEG

FLUID PROPERTIES	method	limit/base	current	history1	history2	
Visc @ 40°C	cSt	ASTM D445	46	<b>50.1</b>	48.3	47.0

SAMPLE IMAGES	method	limit/base	current	history1	history2
---------------	--------	------------	---------	----------	----------



## GRAPHS



**Laboratory** : WearCheck USA - 501 Madison Ave., Cary, NC 27513  
**Sample No.** : UCH06195536      **Received** : 30 May 2024  
**Lab Number** : **06195536**      **Tested** : 31 May 2024  
**Unique Number** : 11057659      **Diagnosed** : 31 May 2024 - Wes Davis  
**Test Package** : IND 2

**TATE ENGINEERING**  
 3921 Vero Road  
 BALTIMORE, MD  
 US 21227  
 Contact: JOSH PLITT  
 josh.plitt@tate.com  
 T: (443)992-4413  
 F:

To discuss this sample report, contact Customer Service at 1-800-237-1369.  
 \* - Denotes test methods that are outside of the ISO 17025 scope of accreditation.  
 Statements of conformity to specifications are based on the simple acceptance decision rule (JCGM 106:2012)