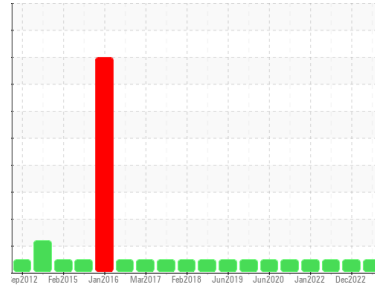




OIL ANALYSIS REPORT

Sample Rating Trend



NORMAL



Machine Id
L3 SPIRAL GEARBOX
 Component
Gearbox
 Fluid
LUBRIPLATE SFGO ULTRA 220 (8 GAL)

DIAGNOSIS

Recommendation

Resample at the next service interval to monitor.

Wear

All component wear rates are normal.

Contamination

There is no indication of any contamination in the oil.

Fluid Condition

The AN level is acceptable for this fluid. The condition of the oil is suitable for further service.

| SAMPLE INFORMATION | | method | limit/base | current | history1 | history2 |
|--------------------|-------------|-------------|------------|--------------------|-------------|-------------|
| Sample Number | Client Info | | | WC0936181 | WC0755593 | WC0675990 |
| Sample Date | Client Info | | | 29 May 2024 | 24 Dec 2022 | 26 Aug 2022 |
| Machine Age | mths | Client Info | | 0 | 0 | 0 |
| Oil Age | mths | Client Info | | 0 | 0 | 0 |
| Oil Changed | Client Info | | | N/A | N/A | N/A |
| Sample Status | | | | NORMAL | NORMAL | NORMAL |

| CONTAMINATION | | method | limit/base | current | history1 | history2 |
|---------------|-----------|--------|------------|------------|----------|----------|
| Water | WC Method | | >0.2 | NEG | NEG | NEG |

| WEAR METALS | | method | limit/base | current | history1 | history2 |
|-------------|-----|-------------|------------|--------------|----------|----------|
| Iron | ppm | ASTM D5185m | >200 | 8 | 6 | 6 |
| Chromium | ppm | ASTM D5185m | >15 | 0 | 0 | 0 |
| Nickel | ppm | ASTM D5185m | >15 | 0 | 0 | 0 |
| Titanium | ppm | ASTM D5185m | | 0 | 0 | 0 |
| Silver | ppm | ASTM D5185m | | 0 | 0 | 0 |
| Aluminum | ppm | ASTM D5185m | >25 | 0 | <1 | 0 |
| Lead | ppm | ASTM D5185m | >100 | 0 | <1 | 0 |
| Copper | ppm | ASTM D5185m | >200 | 0 | 0 | 0 |
| Tin | ppm | ASTM D5185m | >25 | <1 | <1 | 0 |
| Antimony | ppm | ASTM D5185m | >5 | --- | --- | --- |
| Vanadium | ppm | ASTM D5185m | | 0 | 0 | 0 |
| Cadmium | ppm | ASTM D5185m | | 0 | 0 | 0 |

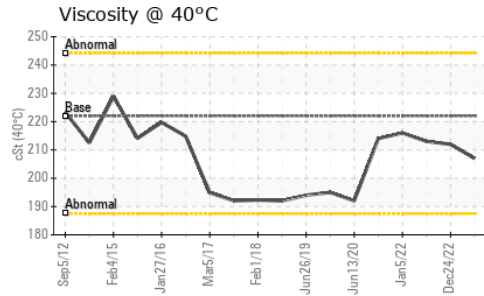
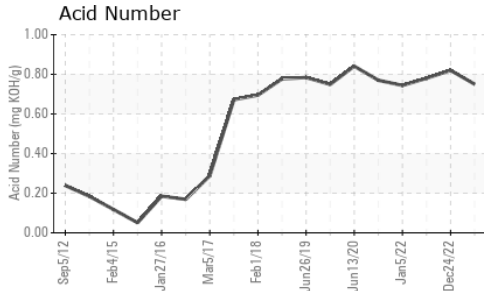
| ADDITIVES | | method | limit/base | current | history1 | history2 |
|------------|-----|-------------|------------|--------------|----------|----------|
| Boron | ppm | ASTM D5185m | | 0 | <1 | <1 |
| Barium | ppm | ASTM D5185m | | 0 | 0 | 0 |
| Molybdenum | ppm | ASTM D5185m | | 0 | 0 | 0 |
| Manganese | ppm | ASTM D5185m | | <1 | 0 | 0 |
| Magnesium | ppm | ASTM D5185m | | <1 | <1 | 0 |
| Calcium | ppm | ASTM D5185m | | 0 | 0 | 2 |
| Phosphorus | ppm | ASTM D5185m | | 206 | 265 | 226 |
| Zinc | ppm | ASTM D5185m | | 0 | 0 | 0 |
| Sulfur | ppm | ASTM D5185m | | 2350 | 2183 | 1712 |

| CONTAMINANTS | | method | limit/base | current | history1 | history2 |
|--------------|-----|-------------|------------|--------------|----------|----------|
| Silicon | ppm | ASTM D5185m | >50 | 2 | 2 | 2 |
| Sodium | ppm | ASTM D5185m | | <1 | 0 | 0 |
| Potassium | ppm | ASTM D5185m | >20 | <1 | 1 | 0 |

| FLUID DEGRADATION | | method | limit/base | current | history1 | history2 |
|-------------------|----------|------------|------------|-------------|----------|----------|
| Acid Number (AN) | mg KOH/g | ASTM D8045 | | 0.75 | 0.82 | 0.78 |



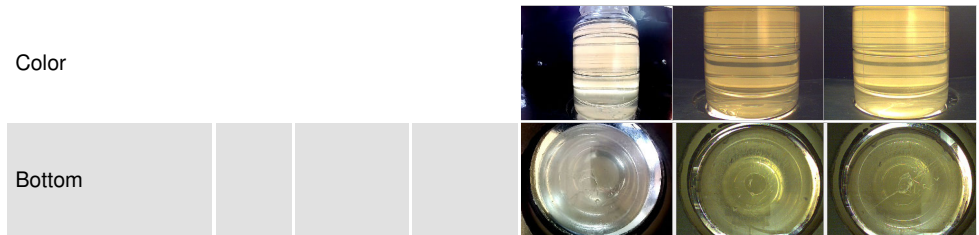
OIL ANALYSIS REPORT



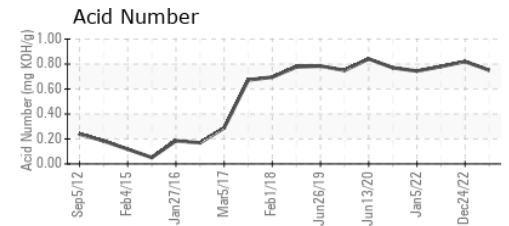
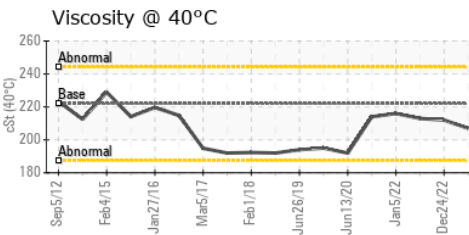
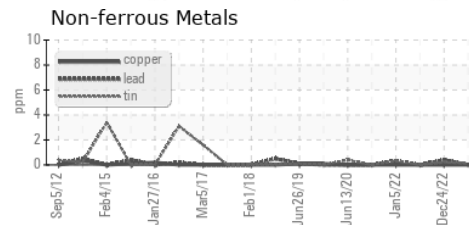
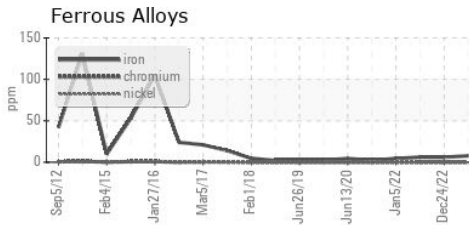
| VISUAL | method | limit/base | current | history1 | history2 |
|------------------|--------|------------|---------|----------|----------|
| White Metal | scalar | *Visual | NONE | NONE | NONE |
| Yellow Metal | scalar | *Visual | NONE | NONE | NONE |
| Precipitate | scalar | *Visual | NONE | NONE | NONE |
| Silt | scalar | *Visual | NONE | NONE | NONE |
| Debris | scalar | *Visual | NONE | NONE | NONE |
| Sand/Dirt | scalar | *Visual | NONE | NONE | NONE |
| Appearance | scalar | *Visual | NORML | NORML | NORML |
| Odor | scalar | *Visual | NORML | NORML | NORML |
| Emulsified Water | scalar | *Visual | >0.2 | NEG | NEG |
| Free Water | scalar | *Visual | | NEG | NEG |

| FLUID PROPERTIES | method | limit/base | current | history1 | history2 |
|------------------|--------|---------------|---------|----------|----------|
| Visc @ 40°C | cSt | ASTM D445 222 | 207 | 212 | 213 |

| SAMPLE IMAGES | method | limit/base | current | history1 | history2 |
|---------------|--------|------------|---------|----------|----------|
|---------------|--------|------------|---------|----------|----------|



GRAPHS



Certificate L2367

Laboratory : WearCheck USA - 501 Madison Ave., Cary, NC 27513
Sample No. : WC0936181 **Received** : 30 May 2024
Lab Number : 06195585 **Tested** : 31 May 2024
Unique Number : 11057708 **Diagnosed** : 31 May 2024 - Wes Davis
Test Package : IND 2

LAMB WESTON/RDO
 PO BOX 552
 PARK RAPIDS, MN
 US 56470

Contact: MICHAEL GRUIS
 michael.gruis@lambweston.com

T: (218)732-2188
 F: (218)732-2175

To discuss this sample report, contact Customer Service at 1-800-237-1369.

* - Denotes test methods that are outside of the ISO 17025 scope of accreditation.

Statements of conformity to specifications are based on the simple acceptance decision rule (JCGM 106:2012)