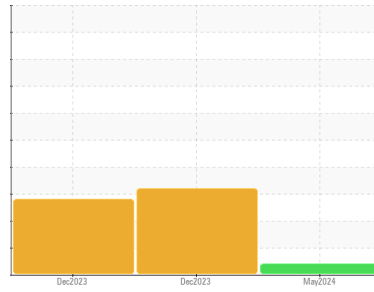


FUEL REPORT



Machine Id
VOLVO L70H 624777
 Component
Diesel Fuel
 Fluid
VOLVO (--- GAL)

Sample Rating Trend



VIS DEBRIS



DIAGNOSIS

▲ Recommendation

We recommend you service the filters on this component.

Corrosion

All metal levels are normal indicating no corrosion in the system.

▲ Contaminants

Moderate concentration of visible dirt/debris present in the fuel. The water content is negligible.

Fuel Condition

The condition of the fuel is acceptable for the time in service.

SAMPLE INFORMATION		method	limit/base	current	history1	history2
Sample Number	Client Info			ML0001709	VCP416862	VCP407639
Sample Date	Client Info			20 May 2024	27 Dec 2023	21 Dec 2023
Machine Age	hrs	Client Info		484	389	389
Sample Status				ABNORMAL	ABNORMAL	ABNORMAL

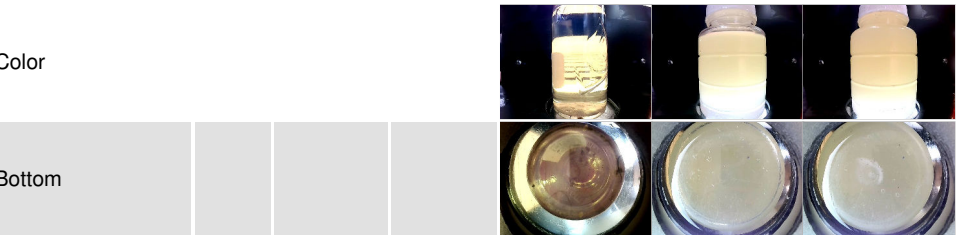
PHYSICAL PROPERTIES		method	limit/base	current	history1	history2
Visc @ 40°C	cSt	ASTM D445		2.42	2.4	2.37

SULFUR CONTENT		method	limit/base	current	history1	history2
Sulfur	ppm	ASTM D5185m		108	0	0

CONTAMINANTS		method	limit/base	current	history1	history2
Silicon	ppm	ASTM D5185m	<1.0	0	0	0
Sodium	ppm	ASTM D5185m	<0.1	<1	<1	0
Potassium	ppm	ASTM D5185m	<0.1	0	0	0
Water	%	ASTM D6304	<0.05	0.003	▲ 0.050	0.042
ppm Water	ppm	ASTM D6304	<500	35	▲ 508	422

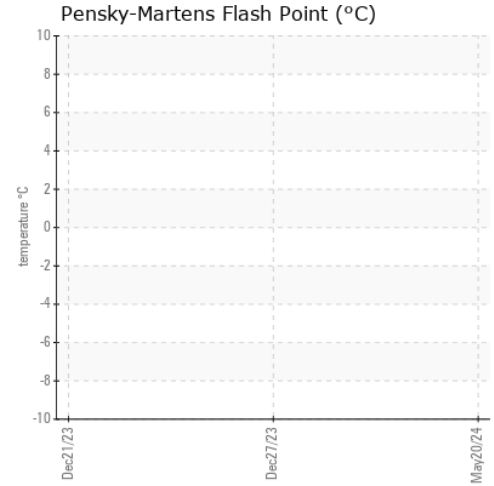
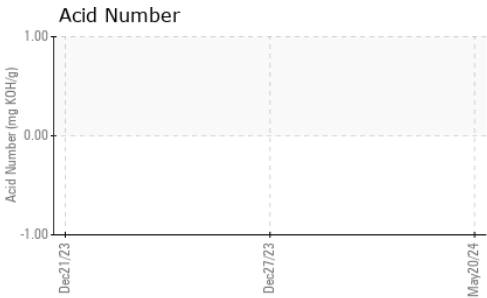
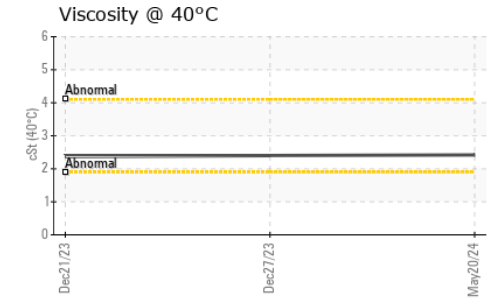
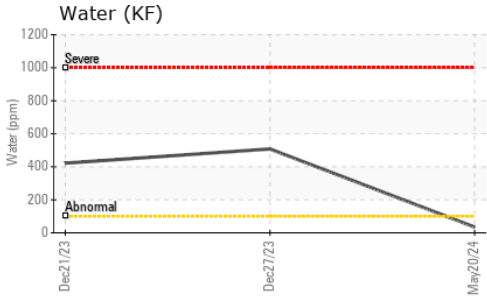
HEAVY METALS		method	limit/base	current	history1	history2
Aluminum	ppm	ASTM D5185m	<0.1	0	0	0
Nickel	ppm	ASTM D5185m	<0.1	0	0	0
Lead	ppm	ASTM D5185m	<0.1	0	0	0
Vanadium	ppm	ASTM D5185m	<0.1	0	0	0
Iron	ppm	ASTM D5185m	<0.1	0	0	0
Calcium	ppm	ASTM D5185m	<0.1	0	0	0
Magnesium	ppm	ASTM D5185m	<0.1	0	0	0
Phosphorus	ppm	ASTM D5185m	<0.1	0	0	0
Zinc	ppm	ASTM D5185m	<0.1	0	0	0

SAMPLE IMAGES		method	limit/base	current	history1	history2
---------------	--	--------	------------	---------	----------	----------



FUEL REPORT

GRAPHS



Certificate L2367

Laboratory : WearCheck USA - 501 Madison Ave., Cary, NC 27513
Sample No. : ML0001709
Lab Number : 06195853
Unique Number : 11057976
Test Package : CONST (Additional Tests: KF, SCREEN)

Received : 30 May 2024
Tested : 05 Jun 2024
Diagnosed : 05 Jun 2024 - Jonathan Hester

MCCLUNG-LOGAN EQUIPMENT CO - CHESAPEAKE
 4112 HOLLAND BLVD
 CHESAPEAKE, VA
 US 23323

To discuss this sample report, contact Customer Service at 1-800-237-1369.

* - Denotes test methods that are outside of the ISO 17025 scope of accreditation.

Statements of conformity to specifications are based on the simple acceptance decision rule (JCGM 106:2012)

Contact: TOMMY GRIFFIN
 tgriffin@mcclung-logan.com

T: (757)485-3314

F: (757)485-3415