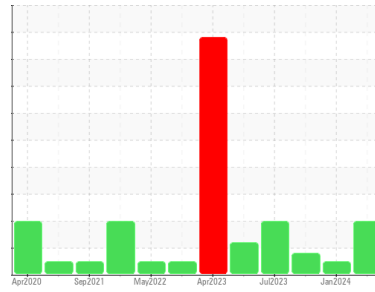




OIL ANALYSIS REPORT

Sample Rating Trend



VISUAL METAL



Area
CORN RECEIVING
Machine Id
C-812
Component
Gearbox
Fluid
MOBIL SHC 630 (13 LTR)

DIAGNOSIS

Recommendation

We recommend you service the filters on this component if applicable. Resample at the next service interval to monitor. We were unable to perform a particle count due to a high concentration of particles present in this sample.

Wear

Moderate concentration of visible metal present. All component wear rates are normal.

Contamination

There is a moderate amount of visible silt present in the sample.

Fluid Condition

The AN level is acceptable for this fluid. The condition of the oil is suitable for further service.

SAMPLE INFORMATION

	method	limit/base	current	history1	history2
Sample Number	Client Info		WC0940999	WC0896635	WC0857558
Sample Date	Client Info		29 May 2024	23 Jan 2024	22 Sep 2023
Machine Age	mths	Client Info	60	60	2
Oil Age	mths	Client Info	0	60	2
Oil Changed	Client Info		N/A	N/A	Changed
Sample Status			ABNORMAL	NORMAL	ABNORMAL

CONTAMINATION

	method	limit/base	current	history1	history2
Water	WC Method	>0.2	NEG	NEG	NEG

WEAR METALS

	method	limit/base	current	history1	history2	
Iron	ppm	ASTM D5185m	>200	112	14	66
Chromium	ppm	ASTM D5185m	>15	0	<1	<1
Nickel	ppm	ASTM D5185m	>15	0	0	0
Titanium	ppm	ASTM D5185m		0	0	<1
Silver	ppm	ASTM D5185m		0	0	0
Aluminum	ppm	ASTM D5185m	>25	0	3	2
Lead	ppm	ASTM D5185m	>100	0	0	0
Copper	ppm	ASTM D5185m	>200	0	0	<1
Tin	ppm	ASTM D5185m	>25	0	0	0
Vanadium	ppm	ASTM D5185m		0	0	0
Cadmium	ppm	ASTM D5185m		0	0	0

ADDITIVES

	method	limit/base	current	history1	history2	
Boron	ppm	ASTM D5185m		0	0	0
Barium	ppm	ASTM D5185m		0	0	0
Molybdenum	ppm	ASTM D5185m		0	0	0
Manganese	ppm	ASTM D5185m		1	0	1
Magnesium	ppm	ASTM D5185m		0	<1	1
Calcium	ppm	ASTM D5185m		2	2	6
Phosphorus	ppm	ASTM D5185m		498	465	451
Zinc	ppm	ASTM D5185m		<1	2	<1
Sulfur	ppm	ASTM D5185m		7	0	26

CONTAMINANTS

	method	limit/base	current	history1	history2	
Silicon	ppm	ASTM D5185m	>50	23	22	38
Sodium	ppm	ASTM D5185m		0	0	2
Potassium	ppm	ASTM D5185m	>20	0	<1	<1

FLUID CLEANLINESS

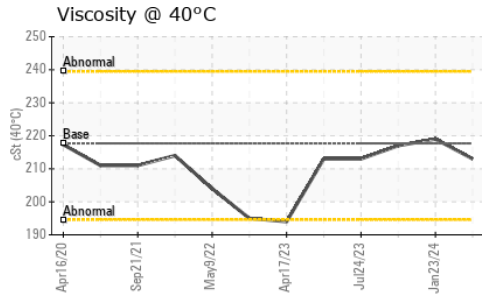
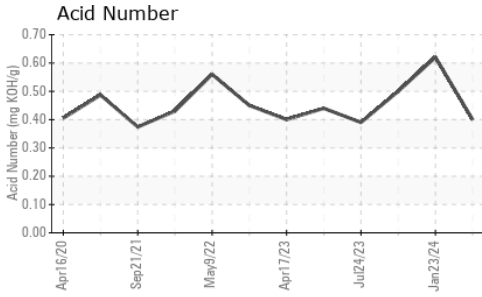
	method	limit/base	current	history1	history2
Particles >4µm	ASTM D7647	>20000	---	132007	---
Particles >6µm	ASTM D7647	>5000	---	46323	---
Particles >14µm	ASTM D7647	>640	---	1264	---
Particles >21µm	ASTM D7647	>160	---	173	---
Particles >38µm	ASTM D7647	>40	---	2	---
Particles >71µm	ASTM D7647	>10	---	1	---
Oil Cleanliness	ISO 4406 (c)	>21/19/16	---	24/23/17	---

FLUID DEGRADATION

	method	limit/base	current	history1	history2
Acid Number (AN)	mg KOH/g	ASTM D8045	0.40	0.62	0.50



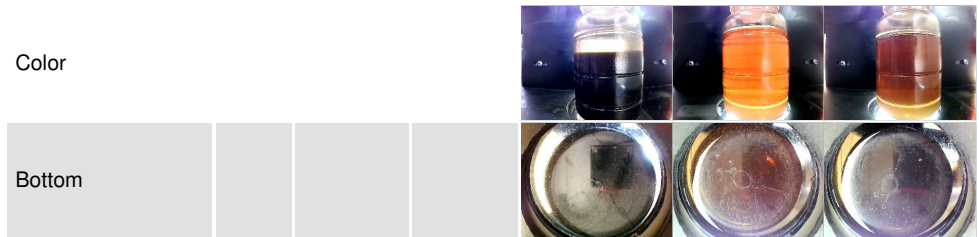
OIL ANALYSIS REPORT



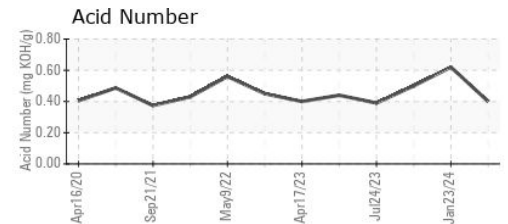
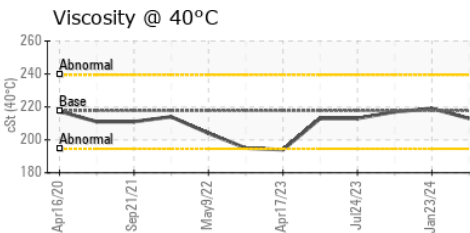
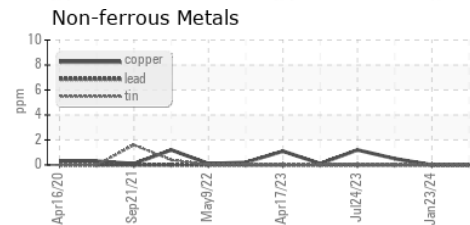
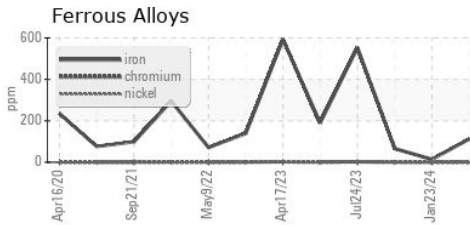
PARAMETER	method	limit/base	current	history1	history2
White Metal	scalar	*Visual	NONE	▲ MODER	NONE
Yellow Metal	scalar	*Visual	NONE	NONE	NONE
Precipitate	scalar	*Visual	NONE	NONE	NONE
Silt	scalar	*Visual	NONE	▲ MODER	▲ MODER
Debris	scalar	*Visual	NONE	NONE	NONE
Sand/Dirt	scalar	*Visual	NONE	NONE	NONE
Appearance	scalar	*Visual	NORML	NORML	NORML
Odor	scalar	*Visual	NORML	NORML	NORML
Emulsified Water	scalar	*Visual	>0.2	NEG	NEG
Free Water	scalar	*Visual		NEG	NEG

FLUID PROPERTIES	method	limit/base	current	history1	history2
Visc @ 40°C	cSt	ASTM D445	217.7	213	219

SAMPLE IMAGES	method	limit/base	current	history1	history2
---------------	--------	------------	---------	----------	----------



GRAPHS



Certificate L2367

Laboratory : WearCheck USA - 501 Madison Ave., Cary, NC 27513
Sample No. : WC0940999 **Received** : 31 May 2024
Lab Number : 06196655 **Tested** : 05 Jun 2024
Unique Number : 11058778 **Diagnosed** : 05 Jun 2024 - Jonathan Hester
Test Package : IND 2 (Additional Tests: PrtCount)

To discuss this sample report, contact Customer Service at 1-800-237-1369.

* - Denotes test methods that are outside of the ISO 17025 scope of accreditation.

Statements of conformity to specifications are based on the simple acceptance decision rule (JCGM 106:2012)

POET BIOREFINING - Groton
 40425 133RD STREET
 GROTON, SD
 US 57445-6400
 Contact: GAVIN KRUEGER
 Gavin.Krueger@POET.COM
 T: (605) 846-6863
 F: (605) 397-2754