



# FUEL REPORT

Sample Rating Trend



**WEAR**



Area

**[SWL561816 SEG 30]**

Machine Id

**GRIZZLY 2/21/0170 - ALTA RENTALS PREFERRED PRODUCE**

Component

**Diesel Fuel**

Fluid

**No.2 DIESEL FUEL (ULTRALOW SULPHUR) (--- GAL)**

## DIAGNOSIS

### ▲ Recommendation

We advise that you filter this fluid before use. All laboratory tests indicate that this sample meets specifications for No.2 ultra-low-sulfur diesel fuel. We were unable to perform a particle count due to a high concentration of particles present in this sample.

### ▲ Corrosion

All metal levels are normal indicating no corrosion in the system.

### ▲ Contaminants

There is a high amount of visible silt present in the sample. There is no bacteria or fungus (yeast and/or mold) indicated in the sample. The water content is negligible.

### Fuel Condition

Sulfur value derived by ASTM D5453 method for ULSD validation. Sulfur level is acceptable for ULSD specification.

## SAMPLE INFORMATION

method	limit/base	current	history1	history2
Sample Number	Client Info	<b>AOL06197193</b>	---	---
Sample Date	Client Info	<b>16 May 2024</b>	---	---
Machine Age	hrs Client Info	<b>0</b>	---	---
Sample Status		<b>ABNORMAL</b>	---	---

## PHYSICAL PROPERTIES

method	limit/base	current	history1	history2
ASTM Color	scalar *ASTM D1500	<b>L5.5</b>	---	---
Visc @ 40°C	cSt ASTM D445	<b>2.46</b>	---	---

## SULFUR CONTENT

method	limit/base	current	history1	history2
Sulfur	ppm ASTM D5185m	<b>0</b>	---	---
Sulfur (UVF)	ppm ASTM D5453	<b>10</b>	---	---


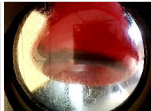
## CONTAMINANTS

method	limit/base	current	history1	history2
Silicon	ppm ASTM D5185m	<b>&lt;1</b>	---	---
Sodium	ppm ASTM D5185m	<b>&lt;0.1</b>	---	---
Potassium	ppm ASTM D5185m	<b>1</b>	---	---
Water	% ASTM D6304	<b>0.003</b>	---	---
ppm Water	ppm ASTM D6304	<b>37</b>	---	---
% Gasoline	% *In-House	<b>0.0</b>	---	---
% Biodiesel	% *In-House	<b>0.0</b>	---	---

## HEAVY METALS

method	limit/base	current	history1	history2
Aluminum	ppm ASTM D5185m	<b>0</b>	---	---
Nickel	ppm ASTM D5185m	<b>0</b>	---	---
Lead	ppm ASTM D5185m	<b>0</b>	---	---
Vanadium	ppm ASTM D5185m	<b>0</b>	---	---
Iron	ppm ASTM D5185m	<b>▲ 2</b>	---	---
Calcium	ppm ASTM D5185m	<b>0</b>	---	---
Magnesium	ppm ASTM D5185m	<b>0</b>	---	---
Phosphorus	ppm ASTM D5185m	<b>0</b>	---	---
Zinc	ppm ASTM D5185m	<b>0</b>	---	---

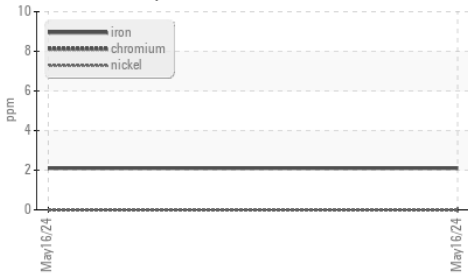
## SAMPLE IMAGES

method	limit/base	current	history1	history2
Color			no image	no image
Bottom			no image	no image



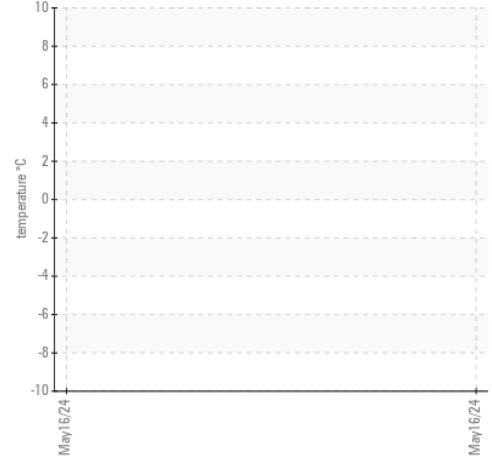
# FUEL REPORT

### ▲ Ferrous Alloys

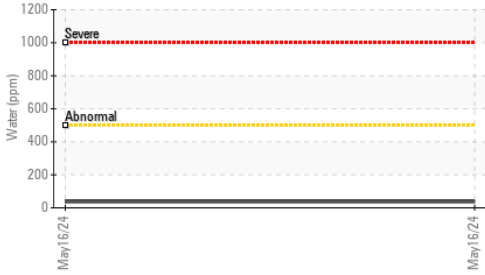


## GRAPHS

### Pensky-Martens Flash Point (°C)



### Water (KF)



### Viscosity @ 40°C



Certificate L2367

**Laboratory** : WearCheck USA - 501 Madison Ave., Cary, NC 27513  
**Sample No.** : AOL06197193      **Received** : 31 May 2024  
**Lab Number** : 06197193      **Tested** : 17 Jun 2024  
**Unique Number** : 11059316      **Diagnosed** : 17 Jun 2024 - Doug Bogart  
**Test Package** : DF-5 ( Additional Tests: BACTERIA, Screen )  
*To discuss this sample report, contact Customer Service at 1-800-237-1369.*  
*\* - Denotes test methods that are outside of the ISO 17025 scope of accreditation.*  
*Statements of conformity to specifications are based on the simple acceptance decision rule (JCGM 106:2012)*

**APEX OIL LAB**  
 3956 44th STREET SE  
 GRAND RAPIDS, MI  
 US 49512  
 Contact: JASON RAINEY  
 jrainey@apexoillab.com  
 T: (616)328-6672  
 F: (616)828-1791