



FUEL REPORT

Sample Rating Trend



ISO



Machine Id
KIOTI CK3510HSEB YHH300151
 Component
Diesel Fuel
 Fluid
No.2 DIESEL FUEL (ULTRALOW SULPHUR) (--- GAL)

DIAGNOSIS

Recommendation

We advise that you filter this fluid before use. All laboratory tests indicate that this sample meets specifications for No.2 ultra-low-sulfur diesel fuel.

Corrosion

All metal levels are normal indicating no corrosion in the system.

Contaminants

There is a high amount of particulates present in the fuel. There is no bacteria or fungus (yeast and/or mold) indicated in the sample. The water content is negligible.

Fuel Condition

Sulfur value derived by ASTM D5453 method for ULSD validation. Sulfur level is acceptable for ULSD specification.

SAMPLE INFORMATION		method	limit/base	current	history1	history2
Sample Number	Client Info			KT0000600	---	---
Sample Date	Client Info			21 May 2024	---	---
Machine Age	hrs	Client Info		414	---	---
Sample Status				ABNORMAL	---	---

PHYSICAL PROPERTIES		method	limit/base	current	history1	history2
Specific Gravity		*ASTM D1298	0.839	0.842	---	---
Fuel Color	text	*Visual Screen	Yllow	Red	---	---
ASTM Color	scalar	*ASTM D1500		L4.5	---	---
Visc @ 40°C	cSt	ASTM D445	3.0	2.91	---	---
Pensky-Martens Flash Point	°C	*PMCC Calculated	52	66.1	---	---

SULFUR CONTENT		method	limit/base	current	history1	history2
Sulfur	ppm	ASTM D5185m	10	0	---	---
Sulfur (UVF)	ppm	ASTM D5453		8	---	---

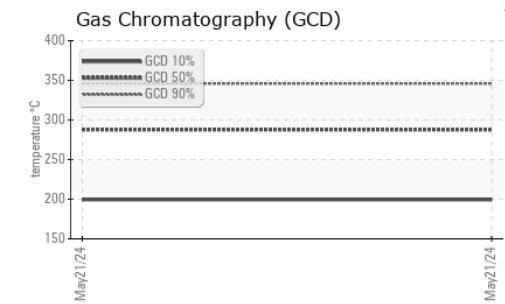
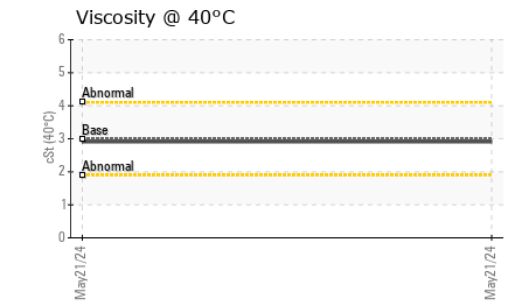
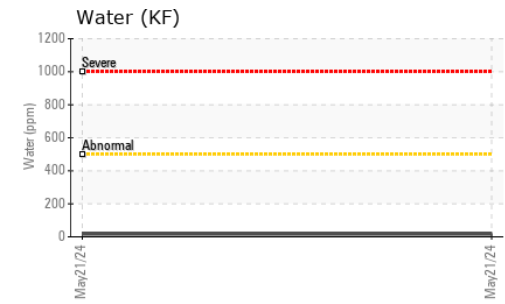
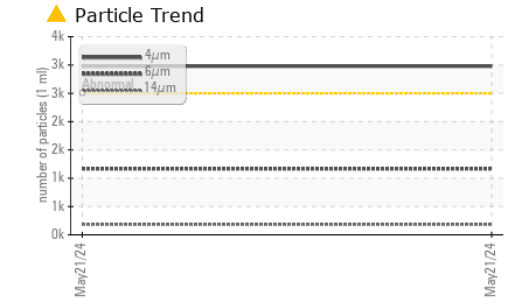
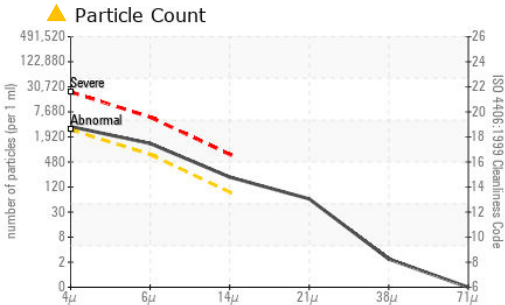
DISTILLATION		method	limit/base	current	history1	history2
Initial Boiling Point	°C	ASTM D86	165	162	---	---
5% Distillation Point	°C	ASTM D86		205	---	---
10% Distill Point	°C	ASTM D86	201	223	---	---
15% Distillation Point	°C	ASTM D86		234	---	---
20% Distill Point	°C	ASTM D86	216	244	---	---
30% Distill Point	°C	ASTM D86	230	259	---	---
40% Distill Point	°C	ASTM D86	243	270	---	---
50% Distill Point	°C	ASTM D86	255	280	---	---
60% Distill Point	°C	ASTM D86	267	288	---	---
70% Distill Point	°C	ASTM D86	280	296	---	---
80% Distill Point	°C	ASTM D86	295	306	---	---
85% Distillation Point	°C	ASTM D86		312	---	---
90% Distill Point	°C	ASTM D86	310	322	---	---
95% Distillation Point	°C	ASTM D86		340	---	---
Final Boiling Point	°C	ASTM D86	341	350	---	---
Distillation Residue	%	ASTM D86	3.0	1.4	---	---
Distillation Loss	%	ASTM D86	3.0	0.7	---	---

IGNITION QUALITY		method	limit/base	current	history1	history2
API Gravity		ASTM D7777	37.7	36.6	---	---
Cetane Index		ASTM D4737	<40.0	52.5	---	---

CONTAMINANTS		method	limit/base	current	history1	history2
Silicon	ppm	ASTM D5185m	<1.0	<1	---	---
Sodium	ppm	ASTM D5185m	<0.1	<1	---	---
Potassium	ppm	ASTM D5185m	<0.1	<1	---	---
Water	%	ASTM D6304	<0.05	0.002	---	---
ppm Water	ppm	ASTM D6304	<500	17	---	---
% Gasoline	%	*In-House	<0.50	0.0	---	---
% Biodiesel	%	*In-House	<20.0	0.0	---	---



FUEL REPORT

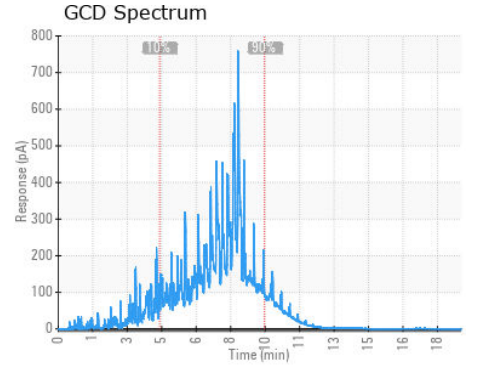
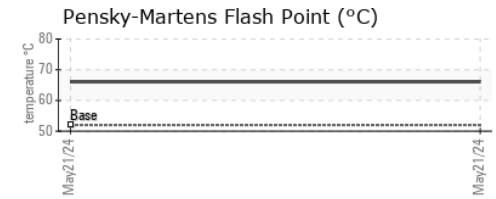
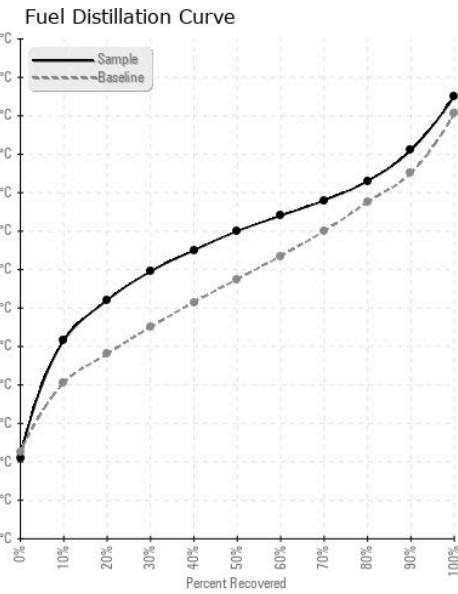


FLUID CLEANLINESS	method	limit/base	current	history1	history2
Particles >4µm	ASTM D7647	>2500	● 2978	---	---
Particles >6µm	ASTM D7647	>640	● 1168	---	---
Particles >14µm	ASTM D7647	>80	▲ 183	---	---
Particles >21µm	ASTM D7647	>20	▲ 55	---	---
Particles >38µm	ASTM D7647	>4	2	---	---
Particles >71µm	ASTM D7647	>3	0	---	---
Oil Cleanliness	ISO 4406 (c)	>18/16/13	▲ 19/17/15	---	---

HEAVY METALS	method	limit/base	current	history1	history2
Aluminum	ppm	ASTM D5185m <0.1	0	---	---
Nickel	ppm	ASTM D5185m <0.1	0	---	---
Lead	ppm	ASTM D5185m <0.1	0	---	---
Vanadium	ppm	ASTM D5185m <0.1	0	---	---
Iron	ppm	ASTM D5185m <0.1	0	---	---
Calcium	ppm	ASTM D5185m <0.1	0	---	---
Magnesium	ppm	ASTM D5185m <0.1	0	---	---
Phosphorus	ppm	ASTM D5185m <0.1	0	---	---
Zinc	ppm	ASTM D5185m <0.1	0	---	---

SAMPLE IMAGES	method	limit/base	current	history1	history2
Color				no image	no image
Bottom				no image	no image

GRAPHS



Laboratory : WearCheck USA - 501 Madison Ave., Cary, NC 27513
Sample No. : KT0000600 **Received** : 31 May 2024
Lab Number : 06197197 **Tested** : 14 Jun 2024
Unique Number : 11059320 **Diagnosed** : 14 Jun 2024 - Doug Bogart
Test Package : DF-2 (Additional Tests: Fuel, Screen)

COWLITZ RIVER RIGGING
 1540 INDUSTRIAL WAY
 LONGVIEW, WA
 US 98632
 Contact: GARRET
 garret@loggingsupply.com
 T: (360)425-6720
 F:

To discuss this sample report, contact Customer Service at 1-800-237-1369.
 * - Denotes test methods that are outside of the ISO 17025 scope of accreditation.
 Statements of conformity to specifications are based on the simple acceptance decision rule (JCGM 106:2012)