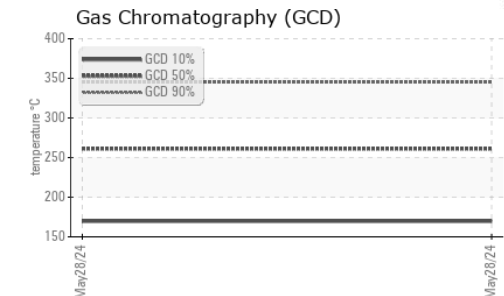
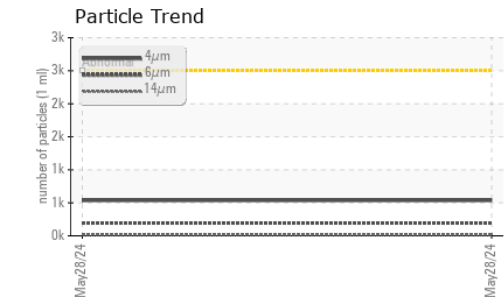
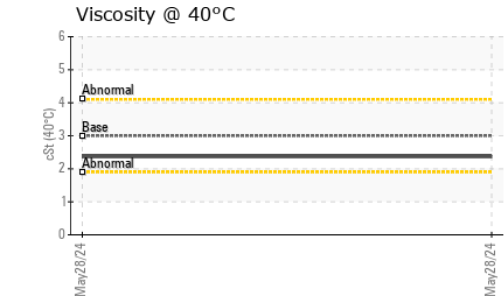
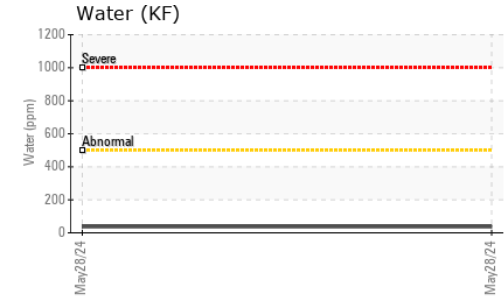
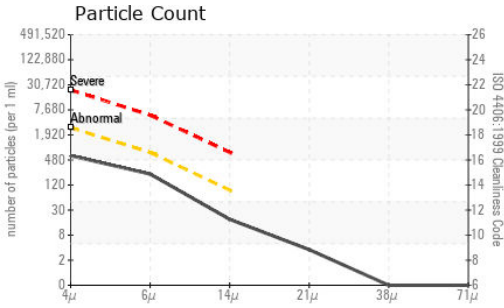




FUEL REPORT

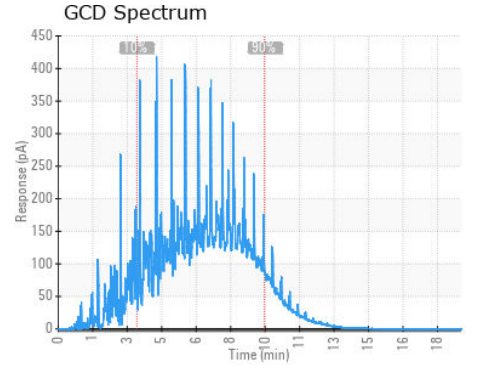
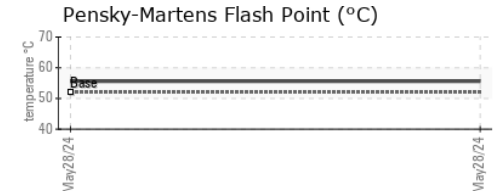
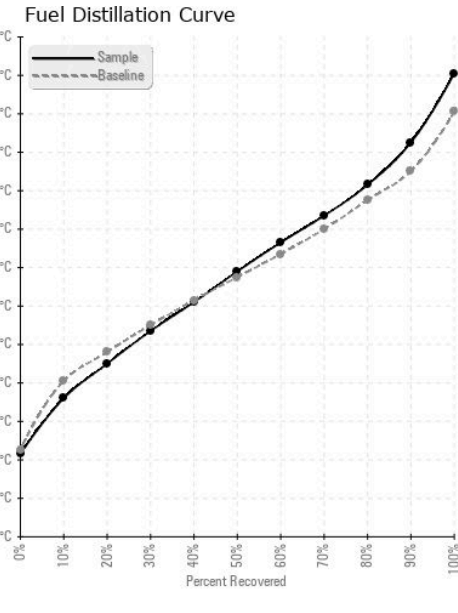


FLUID CLEANLINESS	method	limit/base	current	history1	history2
Particles >4µm	ASTM D7647	>2500	536	---	---
Particles >6µm	ASTM D7647	>640	194	---	---
Particles >14µm	ASTM D7647	>80	16	---	---
Particles >21µm	ASTM D7647	>20	3	---	---
Particles >38µm	ASTM D7647	>4	0	---	---
Particles >71µm	ASTM D7647	>3	0	---	---
Oil Cleanliness	ISO 4406 (c)	>18/16/13	16/15/11	---	---

HEAVY METALS	method	limit/base	current	history1	history2
Aluminum	ppm	ASTM D5185m <0.1	0	---	---
Nickel	ppm	ASTM D5185m <0.1	0	---	---
Lead	ppm	ASTM D5185m <0.1	<1	---	---
Vanadium	ppm	ASTM D5185m <0.1	<1	---	---
Iron	ppm	ASTM D5185m <0.1	0	---	---
Calcium	ppm	ASTM D5185m <0.1	0	---	---
Magnesium	ppm	ASTM D5185m <0.1	<1	---	---
Phosphorus	ppm	ASTM D5185m <0.1	1	---	---
Zinc	ppm	ASTM D5185m <0.1	<1	---	---

SAMPLE IMAGES	method	limit/base	current	history1	history2
Color				no image	no image
Bottom				no image	no image

GRAPHS



Laboratory : WearCheck USA - 501 Madison Ave., Cary, NC 27513
Sample No. : KT0001396 **Received** : 03 Jun 2024
Lab Number : **06198145** **Tested** : 12 Jun 2024
Unique Number : 11060268 **Diagnosed** : 12 Jun 2024 - Doug Bogart
Test Package : DF-2 (Additional Tests: Fuel, SCREEN)

LARRY STOVESAND EQUIPMENT
 2361 S CHURCH ST
 MURFREESBORO, TN
 US 37130
 Contact: JASON
 jason@lsetractor.com
 T: (615)956-0334
 F:

To discuss this sample report, contact Customer Service at 1-800-237-1369.

* - Denotes test methods that are outside of the ISO 17025 scope of accreditation.
 Statements of conformity to specifications are based on the simple acceptance decision rule (JCGM 106:2012)