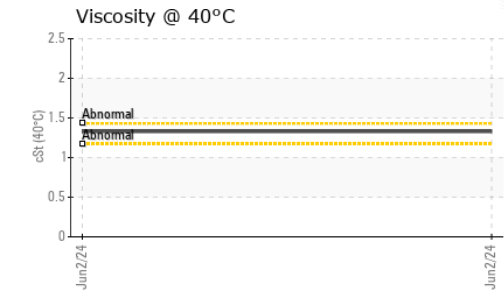
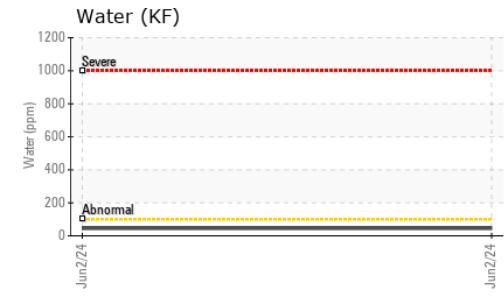
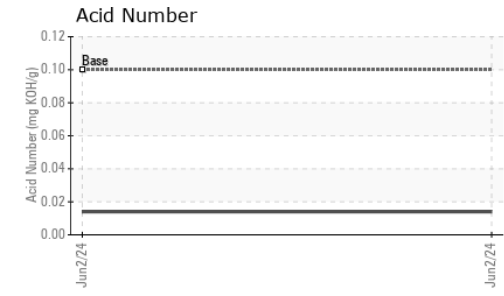
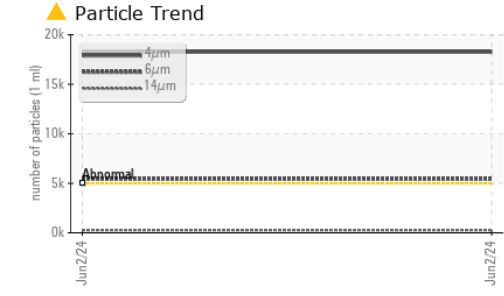
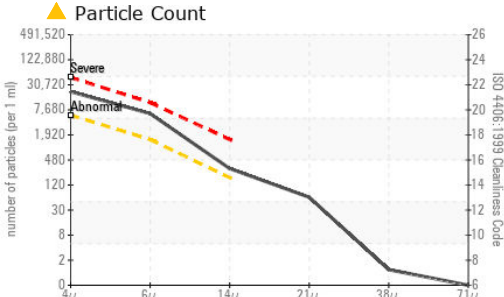




FUEL REPORT

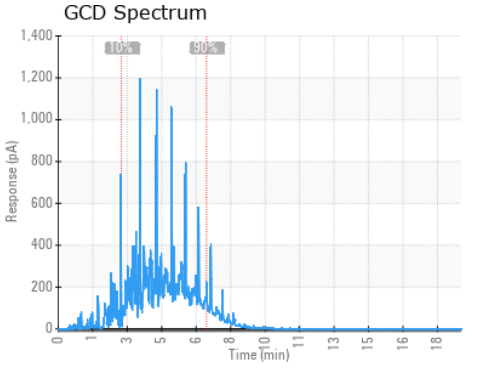
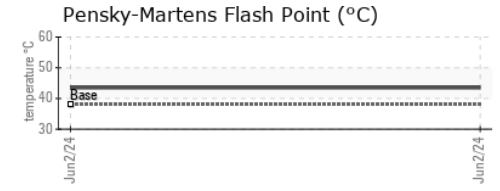
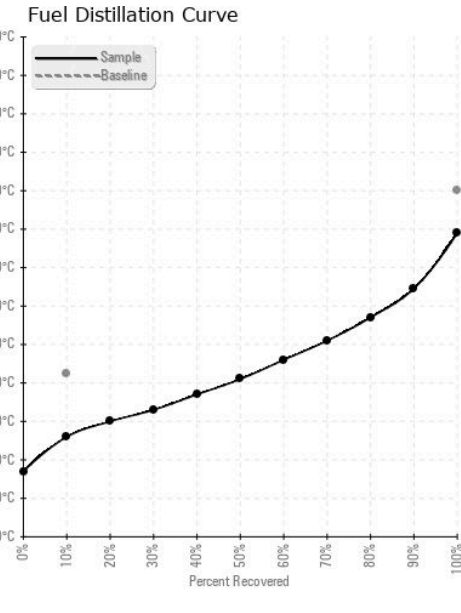
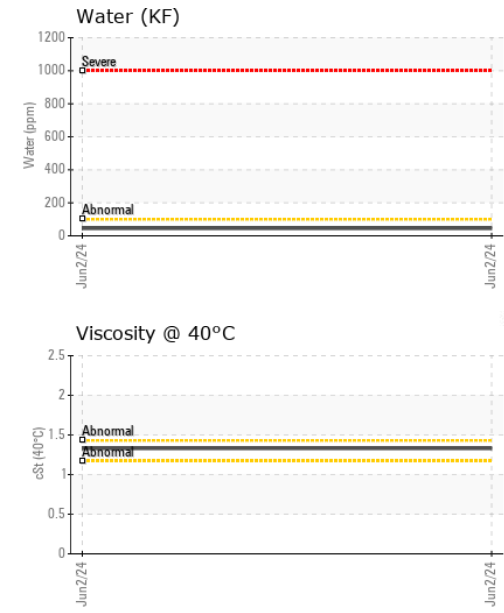


FLUID CLEANLINESS	method	limit/base	current	history1	history2
Particles >4µm	ASTM D7647	>5000	▲ 18255	---	---
Particles >6µm	ASTM D7647	>1300	▲ 5436	---	---
Particles >14µm	ASTM D7647	>160	▲ 263	---	---
Particles >21µm	ASTM D7647	>40	▲ 54	---	---
Particles >38µm	ASTM D7647	>10	1	---	---
Particles >71µm	ASTM D7647	>3	0	---	---
Oil Cleanliness	ISO 4406 (c)	>19/17/14	▲ 21/20/15	---	---

HEAVY METALS	method	limit/base	current	history1	history2
Aluminum	ppm	ASTM D5185m <0.1	0	---	---
Nickel	ppm	ASTM D5185m <0.1	0	---	---
Lead	ppm	ASTM D5185m <0.1	<1	---	---
Vanadium	ppm	ASTM D5185m <0.1	<1	---	---
Iron	ppm	ASTM D5185m <0.1	0	---	---
Calcium	ppm	ASTM D5185m <0.1	0	---	---
Magnesium	ppm	ASTM D5185m <0.1	1	---	---
Phosphorus	ppm	ASTM D5185m <0.1	<1	---	---
Zinc	ppm	ASTM D5185m <0.1	<1	---	---

SAMPLE IMAGES	method	limit/base	current	history1	history2
Color				no image	no image
Bottom				no image	no image

GRAPHS



Laboratory : WearCheck USA - 501 Madison Ave., Cary, NC 27513
Sample No. : WC06198649
Lab Number : 06198649
Unique Number : 11060772
Test Package : DF-2 (Additional Tests: API, CC Flash, Cetane, Color-ASTM, Fuel, GC-PercFuel, GCD, ICP, KF, Water)

COUCH OIL COMPANY
 2907 HILLSBOROUGH RD
 DURHAM, NC
 US 27705
Contact: JESSE BROWN
 jesse@couchoilcompany.com

To discuss this sample report, contact Customer Service at 1-800-237-1369.

* - Denotes test methods that are outside of the ISO 17025 scope of accreditation.

Statements of conformity to specifications are based on the simple acceptance decision rule (JCGM 106:2012)

T: (919)285-5408