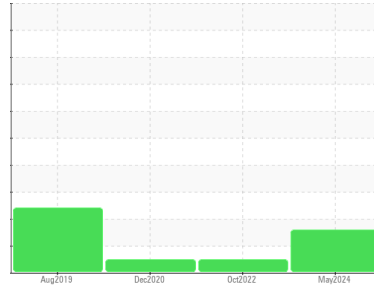


Area
PALASYN 45
Machine Id
PALATEK 1503240004 - RAYS TIRE
Component
Compressor



DIAGNOSIS

Recommendation

The oil change at the time of sampling has been noted. Resample at the next service interval to monitor.

Wear

All component wear rates are normal.

Contamination

There is a light concentration of water present in the oil.

Fluid Condition

The AN level is acceptable for this fluid. The condition of the oil is suitable for further service.

SAMPLE INFORMATION		method	limit/base	current	history1	history2
Sample Number	Client Info			UCS06199347	UCS05669525	UCS05144489
Sample Date	Client Info			24 May 2024	13 Oct 2022	18 Dec 2020
Machine Age	hrs	Client Info		21141	17855	13993
Oil Age	hrs	Client Info		4000	0	4080
Oil Changed	Client Info			Changed	Changed	Changed
Sample Status				ATTENTION	NORMAL	NORMAL

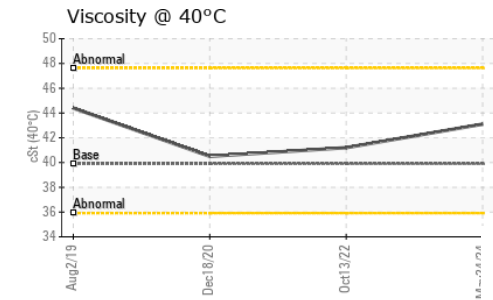
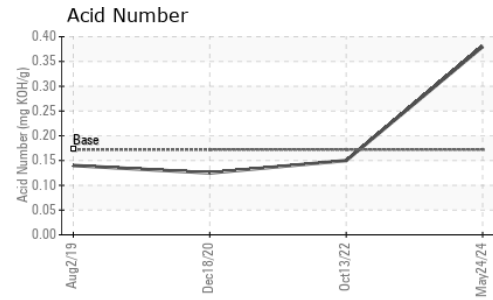
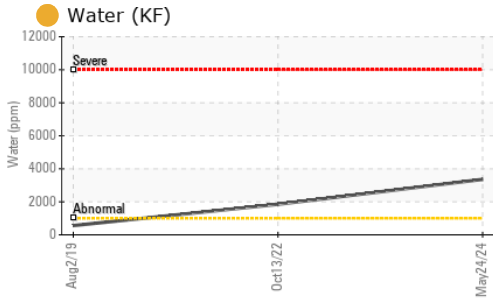
WEAR METALS		method	limit/base	current	history1	history2
Iron	ppm	ASTM D5185m	>50	0	<1	0
Chromium	ppm	ASTM D5185m	>10	0	0	0
Nickel	ppm	ASTM D5185m		0	0	<1
Titanium	ppm	ASTM D5185m		0	0	0
Silver	ppm	ASTM D5185m		0	<1	0
Aluminum	ppm	ASTM D5185m	>25	0	<1	<1
Lead	ppm	ASTM D5185m	>25	0	0	5
Copper	ppm	ASTM D5185m	>50	0	<1	0
Tin	ppm	ASTM D5185m	>15	0	0	0
Antimony	ppm	ASTM D5185m		---	---	0
Vanadium	ppm	ASTM D5185m		0	0	0
Cadmium	ppm	ASTM D5185m		0	0	0

ADDITIVES		method	limit/base	current	history1	history2
Boron	ppm	ASTM D5185m	0.0	0	0	0
Barium	ppm	ASTM D5185m	0.0	0	0	0
Molybdenum	ppm	ASTM D5185m	0	0	0	<1
Manganese	ppm	ASTM D5185m	0	<1	0	0
Magnesium	ppm	ASTM D5185m	0.0	0	0	0
Calcium	ppm	ASTM D5185m	0.0	0	0	0
Phosphorus	ppm	ASTM D5185m	966	630	570	633
Zinc	ppm	ASTM D5185m	0	0	0	0
Sulfur	ppm	ASTM D5185m	1309	864	294	216

CONTAMINANTS		method	limit/base	current	history1	history2
Silicon	ppm	ASTM D5185m	>25	2	1	<1
Sodium	ppm	ASTM D5185m		<1	0	0
Potassium	ppm	ASTM D5185m	>20	<1	<1	12
Water	%	ASTM D6304	>0.1	0.336	0.185	---
ppm Water	ppm	ASTM D6304	>1000	3360	1850	---

FLUID DEGRADATION		method	limit/base	current	history1	history2
Acid Number (AN)	mg KOH/g	ASTM D8045	0.172	0.38	0.15	0.125

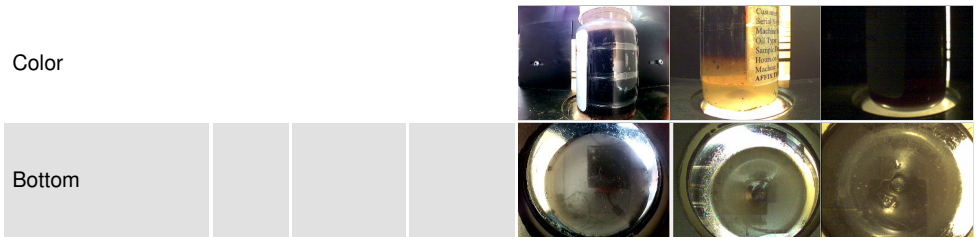
OIL ANALYSIS REPORT



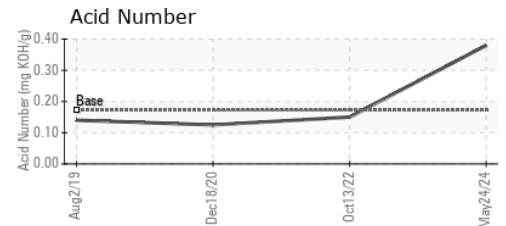
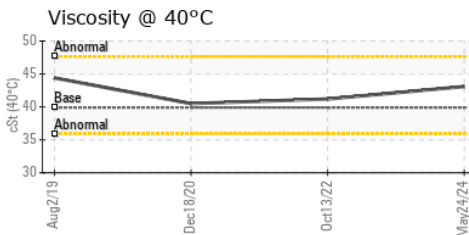
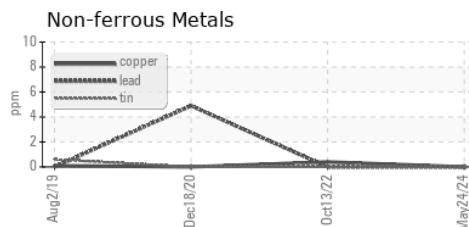
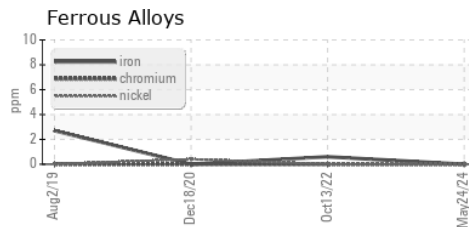
VISUAL	method	limit/base	current	history1	history2
White Metal	scalar	*Visual	NONE	NONE	NONE
Yellow Metal	scalar	*Visual	NONE	NONE	NONE
Precipitate	scalar	*Visual	NONE	NONE	NONE
Silt	scalar	*Visual	NONE	NONE	NONE
Debris	scalar	*Visual	NONE	NONE	NONE
Sand/Dirt	scalar	*Visual	NONE	LIGHT	NONE
Appearance	scalar	*Visual	NORML	NORML	NORML
Odor	scalar	*Visual	NORML	NORML	NORML
Emulsified Water	scalar	*Visual	>0.1	0.2%	NEG
Free Water	scalar	*Visual		NEG	NEG

FLUID PROPERTIES	method	limit/base	current	history1	history2
Visc @ 40°C	cSt	ASTM D445	39.9	43.1	41.2

SAMPLE IMAGES	method	limit/base	current	history1	history2
---------------	--------	------------	---------	----------	----------



GRAPHS



Certificate L2367

Laboratory : WearCheck USA - 501 Madison Ave., Cary, NC 27513
Sample No. : UCS06199347
Lab Number : 06199347
Unique Number : 11061470
Test Package : IND 2 (Additional Tests: KF)

Received : 04 Jun 2024
Tested : 06 Jun 2024
Diagnosed : 06 Jun 2024 - Don Baldrige

VACUUM PUMP and COMPRESSOR
 1490 GRUBER RD
 GREEN BAY, WI
 US 54313
 Contact: ROBIN
 robin@vpc-inc.com
 T: (920)662-1113
 F: (920)662-1116

To discuss this sample report, contact Customer Service at 1-800-237-1369.

* - Denotes test methods that are outside of the ISO 17025 scope of accreditation.

Statements of conformity to specifications are based on the simple acceptance decision rule (JCGM 106:2012)