

Area

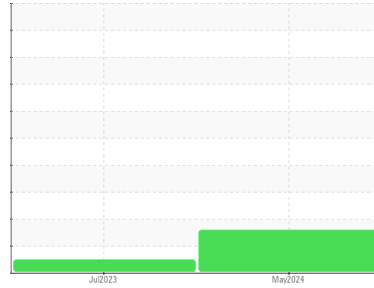
PALLUBE FG

Machine Id

PALATEK 22HE003305 - MIL SPECIALTIES-ADELL

Component

Compressor



DIAGNOSIS

Recommendation

We advise that you check for a possible overheat condition. The oil change at the time of sampling has been noted. We recommend an early resample to monitor this condition.

Wear

All component wear rates are normal.

Contamination

There is no indication of any contamination in the oil.

Fluid Condition

The AN level is above the recommended limit. The oil viscosity is higher than normal. TAN level indicates possible presence of varnish.

SAMPLE INFORMATION method limit/base current history1 history2

Sample Number	Client Info		UCS06199348	UCS05906795	---
Sample Date	Client Info		23 May 2024	20 Jul 2023	---
Machine Age	hrs	Client Info	8765	4188	---
Oil Age	hrs	Client Info	4575	4188	---
Oil Changed		Client Info	Changed	Changed	---
Sample Status			ATTENTION	NORMAL	---

CONTAMINATION method limit/base current history1 history2

Water	WC Method	>0.1	NEG	NEG	---
-------	-----------	------	------------	-----	-----

WEAR METALS method limit/base current history1 history2

Iron	ppm	ASTM D5185m	>50	0	0	---
Chromium	ppm	ASTM D5185m	>10	0	0	---
Nickel	ppm	ASTM D5185m		0	0	---
Titanium	ppm	ASTM D5185m		0	0	---
Silver	ppm	ASTM D5185m		0	0	---
Aluminum	ppm	ASTM D5185m	>25	0	2	---
Lead	ppm	ASTM D5185m	>25	0	0	---
Copper	ppm	ASTM D5185m	>50	0	<1	---
Tin	ppm	ASTM D5185m	>15	<1	0	---
Vanadium	ppm	ASTM D5185m		0	<1	---
Cadmium	ppm	ASTM D5185m		0	0	---

ADDITIVES method limit/base current history1 history2

Boron	ppm	ASTM D5185m	1	0	0	---
Barium	ppm	ASTM D5185m	730	0	0	---
Molybdenum	ppm	ASTM D5185m	0	0	0	---
Manganese	ppm	ASTM D5185m	0.0	<1	<1	---
Magnesium	ppm	ASTM D5185m	0	<1	0	---
Calcium	ppm	ASTM D5185m	0	0	0	---
Phosphorus	ppm	ASTM D5185m	0	149	314	---
Zinc	ppm	ASTM D5185m	0	0	0	---
Sulfur	ppm	ASTM D5185m	590	287	835	---

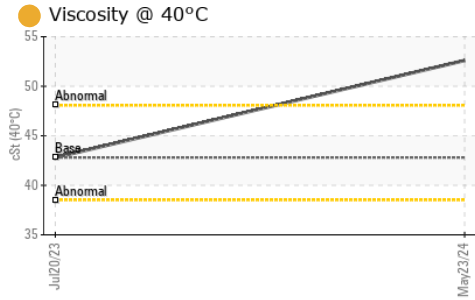
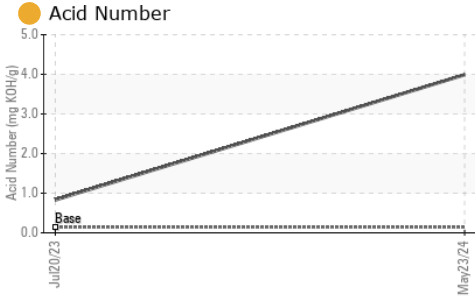
CONTAMINANTS method limit/base current history1 history2

Silicon	ppm	ASTM D5185m	>25	0	0	---
Sodium	ppm	ASTM D5185m		2	<1	---
Potassium	ppm	ASTM D5185m	>20	<1	0	---

FLUID DEGRADATION method limit/base current history1 history2

Acid Number (AN)	mg KOH/g	ASTM D8045	0.14	3.99	0.83	---
------------------	----------	------------	------	-------------	------	-----

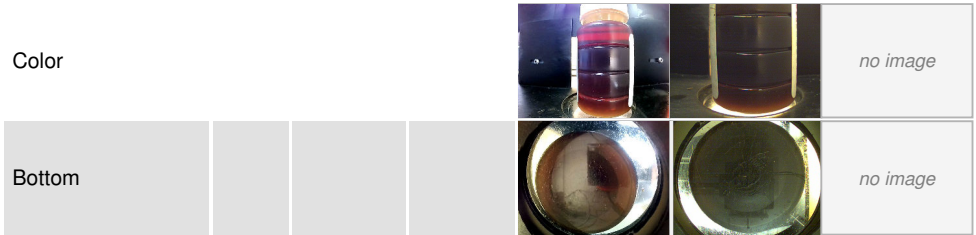
OIL ANALYSIS REPORT



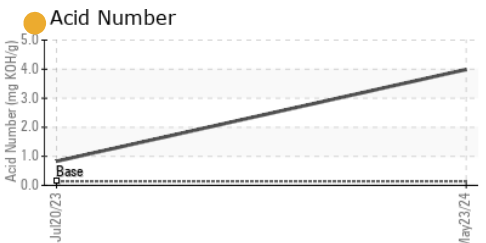
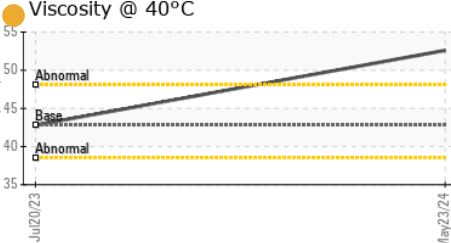
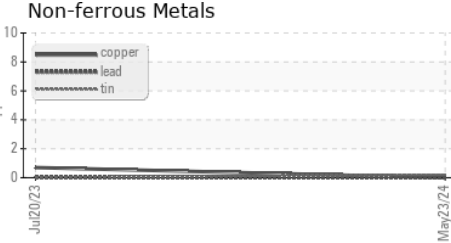
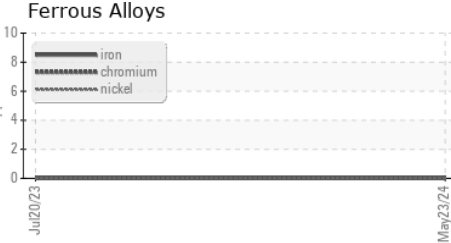
VISUAL	method	limit/base	current	history1	history2
White Metal	scalar	*Visual	NONE	NONE	---
Yellow Metal	scalar	*Visual	NONE	NONE	---
Precipitate	scalar	*Visual	NONE	NONE	---
Silt	scalar	*Visual	NONE	NONE	---
Debris	scalar	*Visual	NONE	NONE	---
Sand/Dirt	scalar	*Visual	NONE	NONE	---
Appearance	scalar	*Visual	NORML	NORML	---
Odor	scalar	*Visual	NORML	NORML	---
Emulsified Water	scalar	*Visual	>0.1	NEG	---
Free Water	scalar	*Visual		NEG	---

FLUID PROPERTIES	method	limit/base	current	history1	history2
Visc @ 40°C	cSt	ASTM D445	42.8	52.6	42.8

SAMPLE IMAGES	method	limit/base	current	history1	history2
---------------	--------	------------	---------	----------	----------



GRAPHS



Laboratory : WearCheck USA - 501 Madison Ave., Cary, NC 27513
Sample No. : UCS06199348
Lab Number : 06199348
Unique Number : 11061471
Test Package : IND 2

Received : 04 Jun 2024
Tested : 05 Jun 2024
Diagnosed : 06 Jun 2024 - Don Baldrige

VACUUM PUMP and COMPRESSOR
 1490 GRUBER RD
 GREEN BAY, WI
 US 54313
 Contact: ROBIN
 robin@vpc-inc.com
 T: (920)662-1113
 F: (920)662-1116

To discuss this sample report, contact Customer Service at 1-800-237-1369.

* - Denotes test methods that are outside of the ISO 17025 scope of accreditation.

Statements of conformity to specifications are based on the simple acceptance decision rule (JCGM 106:2012)