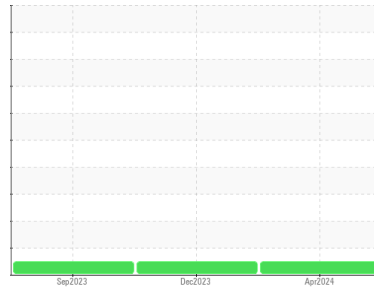




# OIL ANALYSIS REPORT

Sample Rating Trend



**NORMAL**



Area

**ACE-CLS-600-S**

Machine Id

**ATLAS COPCO 414.CP5 - ASH GROVE (S/N 080535R)**

Component

**Compressor**

## DIAGNOSIS

### Recommendation

Resample at the next service interval to monitor. Please specify the brand, type, and viscosity of the oil on your next sample.

### Wear

All component wear rates are normal.

### Contamination

There is no indication of any contamination in the oil.

### Fluid Condition

The AN level is acceptable for this fluid. The condition of the oil is suitable for further service.

## SAMPLE INFORMATION

	method	limit/base	current	history1	history2
Sample Number	Client Info		<b>UCH06199380</b>	UCH06043321	UCH05990505
Sample Date	Client Info		<b>25 Apr 2024</b>	14 Dec 2023	15 Sep 2023
Machine Age	hrs	Client Info	<b>42294</b>	39382	3281
Oil Age	hrs	Client Info	<b>0</b>	1203	3281
Oil Changed	Client Info		<b>N/A</b>	Not Changd	Not Changd
Sample Status			<b>NORMAL</b>	NORMAL	NORMAL

## CONTAMINATION

	method	limit/base	current	history1	history2
Water	WC Method	>0.1	<b>NEG</b>	NEG	NEG

## WEAR METALS

	method	limit/base	current	history1	history2
Iron	ppm	ASTM D5185m >50	<b>14</b>	4	2
Chromium	ppm	ASTM D5185m >5	<b>0</b>	0	0
Nickel	ppm	ASTM D5185m	<b>0</b>	0	0
Titanium	ppm	ASTM D5185m	<b>0</b>	0	<1
Silver	ppm	ASTM D5185m	<b>0</b>	0	0
Aluminum	ppm	ASTM D5185m >15	<b>0</b>	0	0
Lead	ppm	ASTM D5185m >65	<b>0</b>	0	0
Copper	ppm	ASTM D5185m >65	<b>&lt;1</b>	0	<1
Tin	ppm	ASTM D5185m >10	<b>&lt;1</b>	0	<1
Vanadium	ppm	ASTM D5185m	<b>0</b>	0	0
Cadmium	ppm	ASTM D5185m	<b>0</b>	0	0

## ADDITIVES

	method	limit/base	current	history1	history2
Boron	ppm	ASTM D5185m	<b>0</b>	0	0
Barium	ppm	ASTM D5185m	<b>4</b>	4	12
Molybdenum	ppm	ASTM D5185m	<b>0</b>	0	0
Manganese	ppm	ASTM D5185m	<b>&lt;1</b>	0	<1
Magnesium	ppm	ASTM D5185m	<b>&lt;1</b>	<1	0
Calcium	ppm	ASTM D5185m	<b>3</b>	2	1
Phosphorus	ppm	ASTM D5185m	<b>18</b>	26	13
Zinc	ppm	ASTM D5185m	<b>0</b>	0	<1
Sulfur	ppm	ASTM D5185m	<b>108</b>	95	88

## CONTAMINANTS

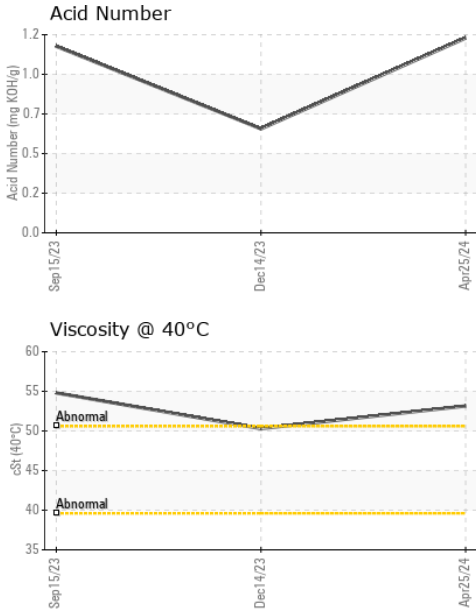
	method	limit/base	current	history1	history2
Silicon	ppm	ASTM D5185m >35	<b>2</b>	5	2
Sodium	ppm	ASTM D5185m	<b>5</b>	2	3
Potassium	ppm	ASTM D5185m >20	<b>6</b>	<1	2

## FLUID DEGRADATION

	method	limit/base	current	history1	history2
Acid Number (AN)	mg KOH/g	ASTM D8045	<b>1.18</b>	0.63	1.13



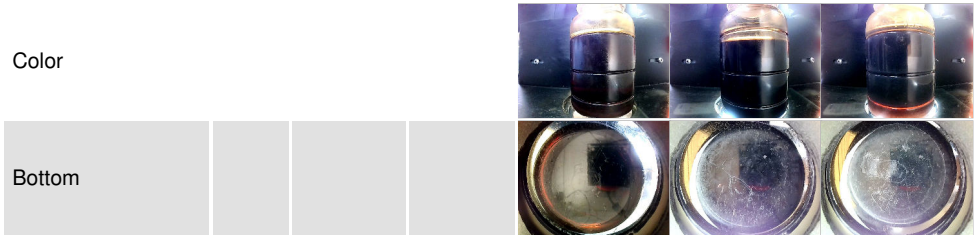
# OIL ANALYSIS REPORT



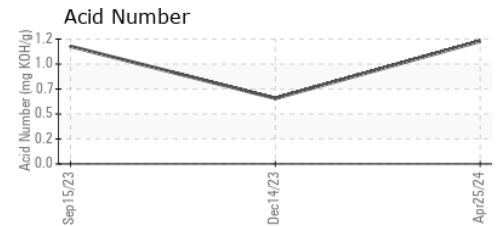
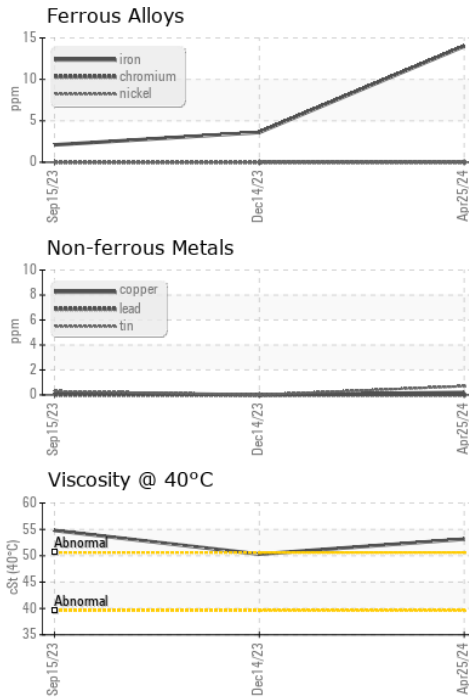
VISUAL	method	limit/base	current	history1	history2
White Metal	scalar	*Visual	NONE	NONE	NONE
Yellow Metal	scalar	*Visual	NONE	NONE	NONE
Precipitate	scalar	*Visual	NONE	NONE	NONE
Silt	scalar	*Visual	NONE	NONE	NONE
Debris	scalar	*Visual	NONE	NONE	NONE
Sand/Dirt	scalar	*Visual	NONE	NONE	NONE
Appearance	scalar	*Visual	NORML	NORML	NORML
Odor	scalar	*Visual	NORML	NORML	NORML
Emulsified Water	scalar	*Visual	>0.1	NEG	NEG
Free Water	scalar	*Visual		NEG	NEG

FLUID PROPERTIES	method	limit/base	current	history1	history2
Visc @ 40°C	cSt	ASTM D445	<b>53.15</b>	50.3	54.8

SAMPLE IMAGES	method	limit/base	current	history1	history2
---------------	--------	------------	---------	----------	----------



## GRAPHS



**Laboratory** : WearCheck USA - 501 Madison Ave., Cary, NC 27513  
**Sample No.** : UCH06199380      **Received** : 04 Jun 2024  
**Lab Number** : **06199380**      **Tested** : 07 Jun 2024  
**Unique Number** : 11061503      **Diagnosed** : 07 Jun 2024 - Wes Davis  
**Test Package** : IND 2

**AIR CAPITAL EQUIPMENT INC**  
 806 E BOSTON ST  
 WICHITA, KS  
 US 67211  
 Contact: MIKAYLA STOUT  
 mstout@aircapeq.com  
 T: (316)522-1111  
 F:

To discuss this sample report, contact Customer Service at 1-800-237-1369.  
 \* - Denotes test methods that are outside of the ISO 17025 scope of accreditation.  
 Statements of conformity to specifications are based on the simple acceptance decision rule (JCGM 106:2012)