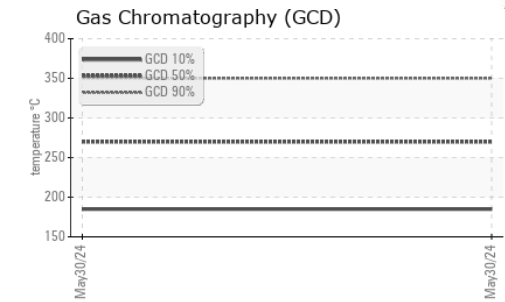
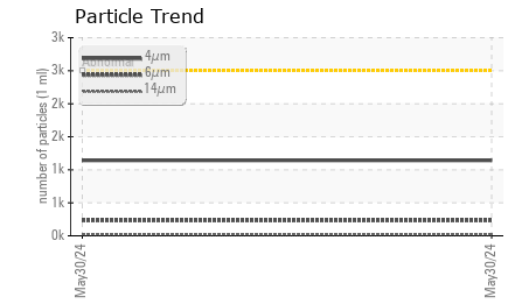
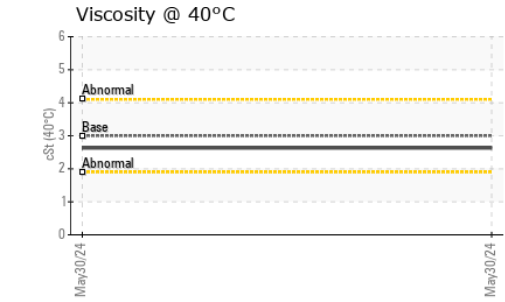
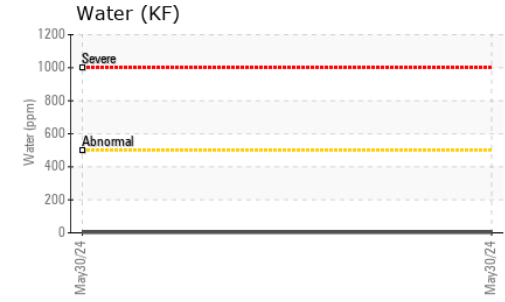
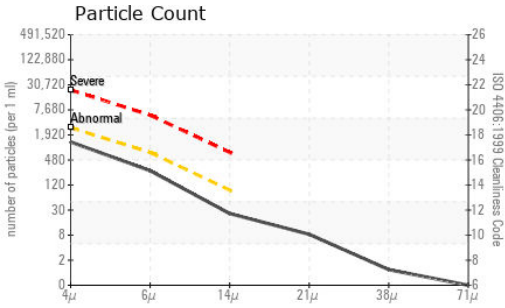




FUEL REPORT

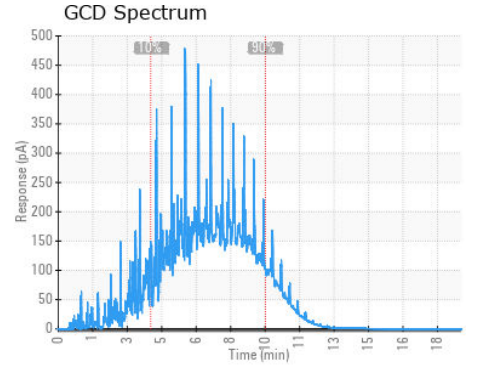
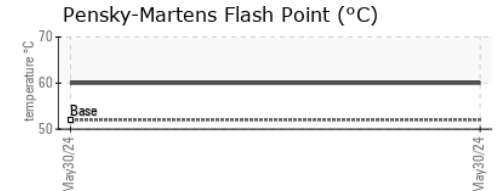
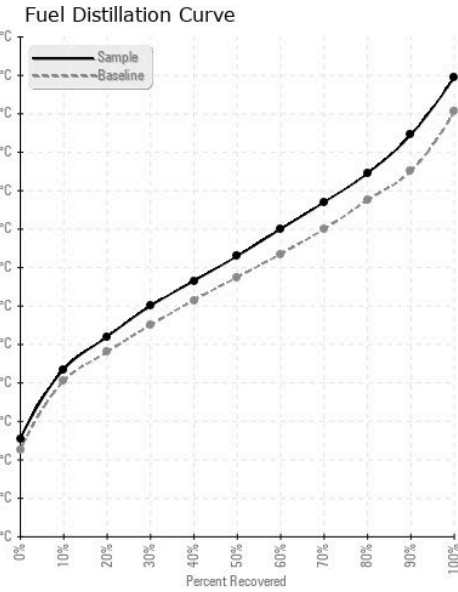


| FLUID CLEANLINESS | method | limit/base | current | history1 | history2 |
|-------------------|--------------|------------|-----------------|----------|----------|
| Particles >4µm | ASTM D7647 | >2500 | 1141 | --- | --- |
| Particles >6µm | ASTM D7647 | >640 | 233 | --- | --- |
| Particles >14µm | ASTM D7647 | >80 | 22 | --- | --- |
| Particles >21µm | ASTM D7647 | >20 | 7 | --- | --- |
| Particles >38µm | ASTM D7647 | >4 | 1 | --- | --- |
| Particles >71µm | ASTM D7647 | >3 | 0 | --- | --- |
| Oil Cleanliness | ISO 4406 (c) | >18/16/13 | 17/15/12 | --- | --- |

| HEAVY METALS | method | limit/base | current | history1 | history2 |
|--------------|--------|------------------|--------------|----------|----------|
| Aluminum | ppm | ASTM D5185m <0.1 | 0 | --- | --- |
| Nickel | ppm | ASTM D5185m <0.1 | 0 | --- | --- |
| Lead | ppm | ASTM D5185m <0.1 | 0 | --- | --- |
| Vanadium | ppm | ASTM D5185m <0.1 | 0 | --- | --- |
| Iron | ppm | ASTM D5185m <0.1 | 0 | --- | --- |
| Calcium | ppm | ASTM D5185m <0.1 | 2 | --- | --- |
| Magnesium | ppm | ASTM D5185m <0.1 | 0 | --- | --- |
| Phosphorus | ppm | ASTM D5185m <0.1 | <1 | --- | --- |
| Zinc | ppm | ASTM D5185m <0.1 | 0 | --- | --- |

| SAMPLE IMAGES | method | limit/base | current | history1 | history2 |
|---------------|--------|------------|---------|----------|----------|
| Color | | | | no image | no image |
| Bottom | | | | no image | no image |

GRAPHS



Laboratory : WearCheck USA - 501 Madison Ave., Cary, NC 27513
Sample No. : KT0001398 **Received** : 04 Jun 2024
Lab Number : **06199741** **Tested** : 10 Jun 2024
Unique Number : 11061864 **Diagnosed** : 12 Jun 2024 - Doug Bogart
Test Package : DF-2 (Additional Tests: Fuel, Screen)

MICHIGAN IRON & EQUIPMENT
 10231 ROSE BLVD
 MORRICE, MI
 US 48857
 Contact: R. PIRO
 rpiro.mie@tds.net
 T: (517)625-4590
 F:

To discuss this sample report, contact Customer Service at 1-800-237-1369.

* - Denotes test methods that are outside of the ISO 17025 scope of accreditation.

Statements of conformity to specifications are based on the simple acceptance decision rule (JCGM 106:2012)