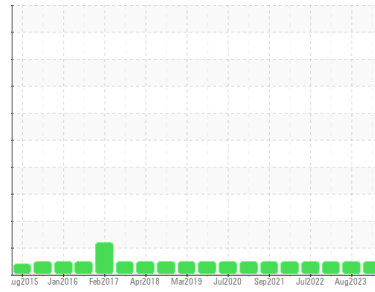




# OIL ANALYSIS REPORT

Sample Rating Trend



**NORMAL**



Area

**CAPL**

Machine Id

**CAPL 7.1 BRIDLE NO.7 (S/N 16-3100-0806)**

Component

**Gearbox**

Fluid

**GEAR OIL ISO 460 (--- QTS)**

## DIAGNOSIS

### Recommendation

Little or no information is provided as to the component and lubricant being tested. Recommendations are therefore generic in nature and may not apply to the current application. Please forward information as to equipment type, reservoir capacity, lubricant type and any pertinent information to allow for a more accurate assessment. Resample at the next service interval to monitor. NOTE: Please provide information regarding reservoir capacity, filter type and micron rating with next sample. Please specify the brand, type, and viscosity of the oil on your next sample.

### Wear

All component wear rates are normal.

### Contamination

The water content is negligible. There is no indication of any contamination in the oil.

### Fluid Condition

The AN level is acceptable for this fluid. The condition of the oil is suitable for further service.

## SAMPLE INFORMATION

	method	limit/base	current	history1	history2
Sample Number	Client Info		<b>RP0044208</b>	RP0034985	RP0030724
Sample Date	Client Info		<b>05 Jun 2024</b>	03 Aug 2023	02 Feb 2023
Machine Age	hrs	Client Info	<b>0</b>	0	0
Oil Age	hrs	Client Info	<b>0</b>	0	0
Oil Changed	Client Info		<b>N/A</b>	N/A	N/A
Sample Status			<b>NORMAL</b>	NORMAL	NORMAL

## WEAR METALS

	method	limit/base	current	history1	history2
PQ	ASTM D8184		<b>49</b>	59	22
Iron	ppm	ASTM D5185m >200	<b>92</b>	88	75
Chromium	ppm	ASTM D5185m >15	<b>1</b>	<1	<1
Nickel	ppm	ASTM D5185m >15	<b>&lt;1</b>	0	0
Titanium	ppm	ASTM D5185m	<b>&lt;1</b>	0	0
Silver	ppm	ASTM D5185m	<b>0</b>	0	0
Aluminum	ppm	ASTM D5185m >25	<b>2</b>	<1	0
Lead	ppm	ASTM D5185m >100	<b>&lt;1</b>	0	0
Copper	ppm	ASTM D5185m >200	<b>&lt;1</b>	<1	<1
Tin	ppm	ASTM D5185m >25	<b>0</b>	0	0
Vanadium	ppm	ASTM D5185m	<b>0</b>	0	0
Cadmium	ppm	ASTM D5185m	<b>&lt;1</b>	0	0

## ADDITIVES

	method	limit/base	current	history1	history2
Boron	ppm	ASTM D5185m 50	<b>24</b>	22	18
Barium	ppm	ASTM D5185m 15	<b>8</b>	6	2
Molybdenum	ppm	ASTM D5185m 15	<b>&lt;1</b>	0	0
Manganese	ppm	ASTM D5185m	<b>1</b>	2	1
Magnesium	ppm	ASTM D5185m 50	<b>2</b>	3	<1
Calcium	ppm	ASTM D5185m 50	<b>48</b>	54	17
Phosphorus	ppm	ASTM D5185m 350	<b>209</b>	233	172
Zinc	ppm	ASTM D5185m 100	<b>32</b>	26	19

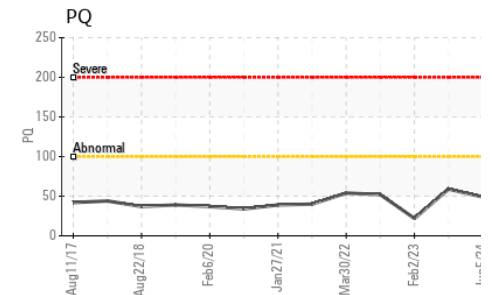
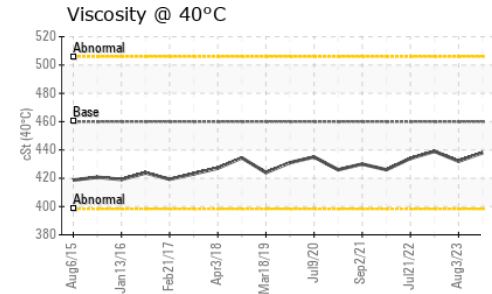
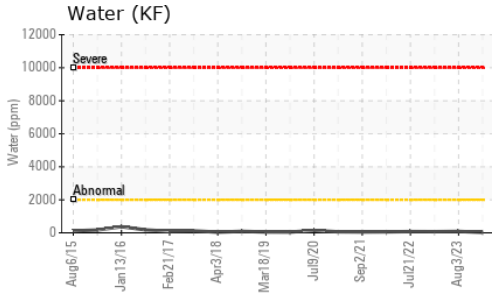
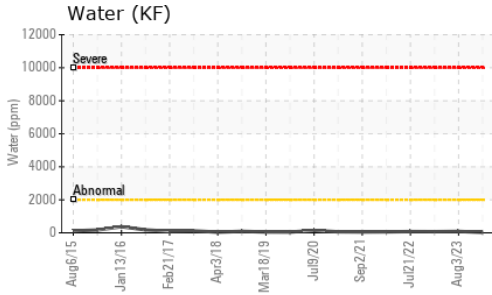
## CONTAMINANTS

	method	limit/base	current	history1	history2
Silicon	ppm	ASTM D5185m >50	<b>4</b>	3	6
Sodium	ppm	ASTM D5185m	<b>0</b>	2	0
Potassium	ppm	ASTM D5185m >20	<b>1</b>	<1	<1
Water	%	ASTM D6304 >0.2	<b>0.003</b>	0.008	0.007
ppm Water	ppm	ASTM D6304 >2000	<b>29</b>	85.3	70.0

## FLUID DEGRADATION

	method	limit/base	current	history1	history2
Acid Number (AN)	mg KOH/g	ASTM D8045 0.85	<b>0.69</b>	0.79	0.64

# OIL ANALYSIS REPORT

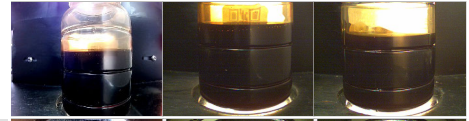


VISUAL	method	limit/base	current	history1	history2
White Metal	scalar	*Visual	NONE	NONE	LIGHT
Yellow Metal	scalar	*Visual	NONE	NONE	NONE
Precipitate	scalar	*Visual	NONE	NONE	NONE
Silt	scalar	*Visual	NONE	NONE	NONE
Debris	scalar	*Visual	NONE	NONE	LIGHT
Sand/Dirt	scalar	*Visual	NONE	NONE	NONE
Appearance	scalar	*Visual	NORML	NORML	NORML
Odor	scalar	*Visual	NORML	NORML	NORML
Emulsified Water	scalar	*Visual	>0.2	NEG	NEG
Free Water	scalar	*Visual		NEG	NEG

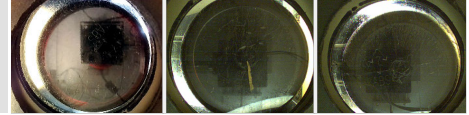
FLUID PROPERTIES	method	limit/base	current	history1	history2
Visc @ 40°C	cSt	ASTM D445	460	438	432

SAMPLE IMAGES	method	limit/base	current	history1	history2
---------------	--------	------------	---------	----------	----------

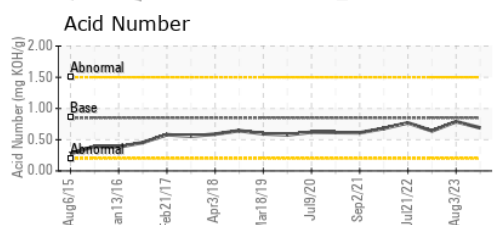
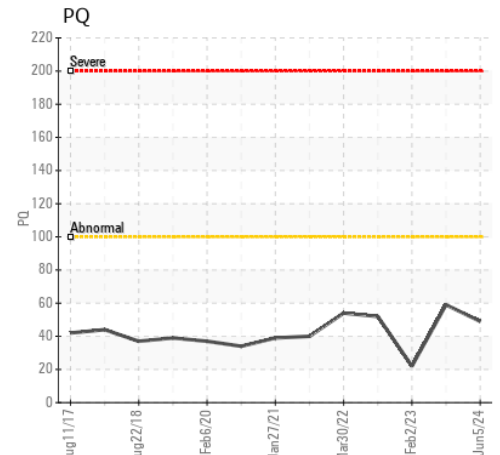
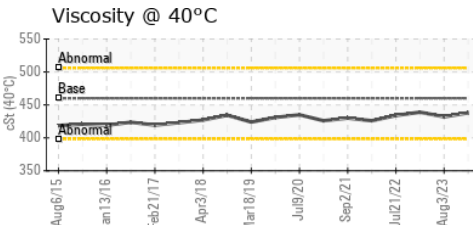
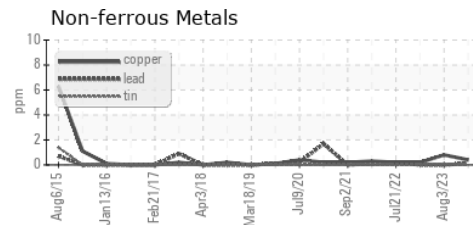
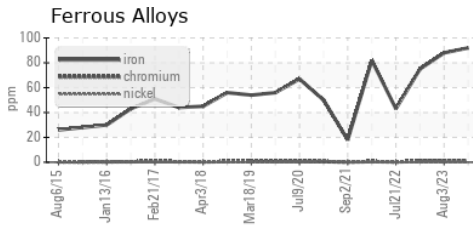
Color



Bottom



## GRAPHS



Certificate L2367

**Laboratory** : WearCheck USA - 501 Madison Ave., Cary, NC 27513  
**Sample No.** : RP0044208  
**Lab Number** : 06201566  
**Unique Number** : 11063689  
**Test Package** : IND 2 ( Additional Tests: PQ )  
**Received** : 06 Jun 2024  
**Tested** : 07 Jun 2024  
**Diagnosed** : 07 Jun 2024 - Wes Davis

**OUTOKUMPU STAINLESS USA**  
 HWY 43 N  
 CALVERT, AL  
 US 36513  
 Contact: MARIO JOHNSON  
 Mario.johnson@outokumpu.com  
 T: (251)321-4105  
 F: x:

To discuss this sample report, contact Customer Service at 1-800-237-1369.

\* - Denotes test methods that are outside of the ISO 17025 scope of accreditation.

Statements of conformity to specifications are based on the simple acceptance decision rule (JCGM 106:2012)