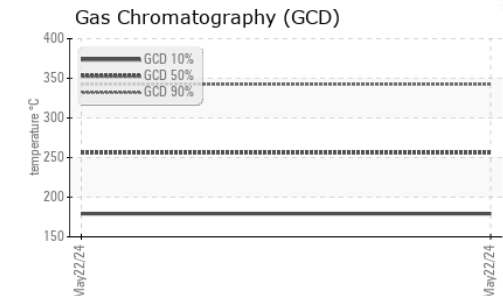
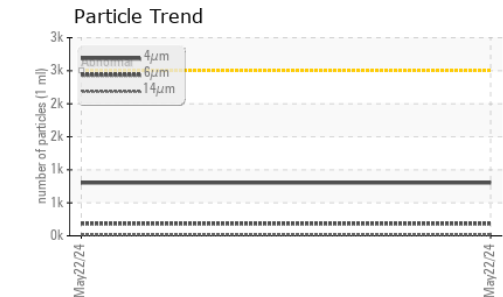
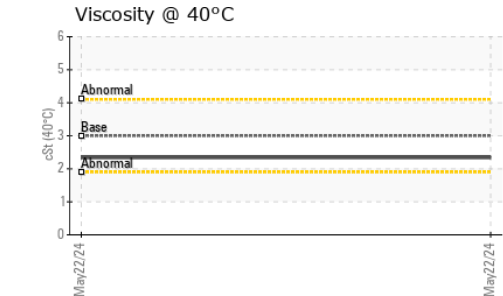
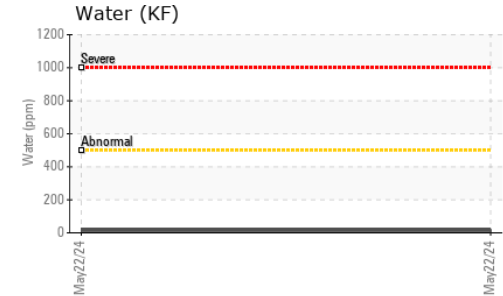
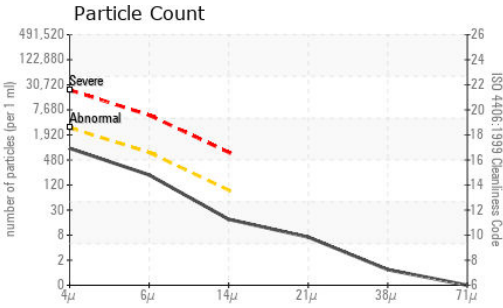






# FUEL REPORT

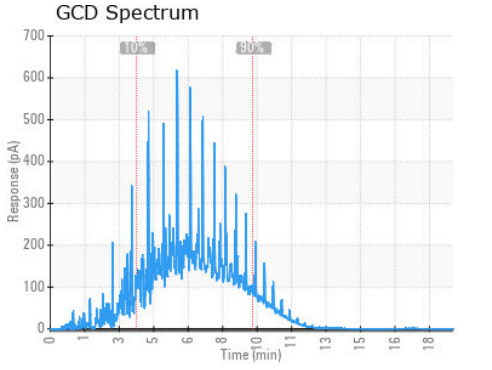
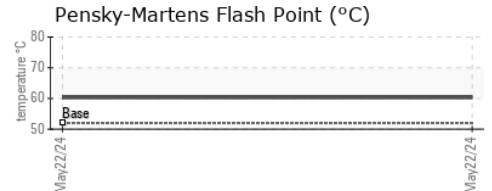
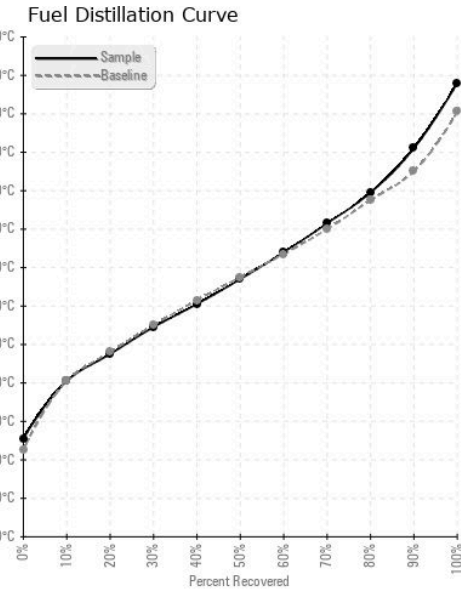


| FLUID CLEANLINESS | method       | limit/base | current         | history1 | history2 |
|-------------------|--------------|------------|-----------------|----------|----------|
| Particles >4µm    | ASTM D7647   | >2500      | <b>803</b>      | ---      | ---      |
| Particles >6µm    | ASTM D7647   | >640       | <b>185</b>      | ---      | ---      |
| Particles >14µm   | ASTM D7647   | >80        | <b>16</b>       | ---      | ---      |
| Particles >21µm   | ASTM D7647   | >20        | <b>6</b>        | ---      | ---      |
| Particles >38µm   | ASTM D7647   | >4         | <b>1</b>        | ---      | ---      |
| Particles >71µm   | ASTM D7647   | >3         | <b>0</b>        | ---      | ---      |
| Oil Cleanliness   | ISO 4406 (c) | >18/16/13  | <b>17/15/11</b> | ---      | ---      |

| HEAVY METALS | method | limit/base       | current  | history1 | history2 |
|--------------|--------|------------------|----------|----------|----------|
| Aluminum     | ppm    | ASTM D5185m <0.1 | <b>0</b> | ---      | ---      |
| Nickel       | ppm    | ASTM D5185m <0.1 | <b>0</b> | ---      | ---      |
| Lead         | ppm    | ASTM D5185m <0.1 | <b>0</b> | ---      | ---      |
| Vanadium     | ppm    | ASTM D5185m <0.1 | <b>0</b> | ---      | ---      |
| Iron         | ppm    | ASTM D5185m <0.1 | <b>0</b> | ---      | ---      |
| Calcium      | ppm    | ASTM D5185m <0.1 | <b>0</b> | ---      | ---      |
| Magnesium    | ppm    | ASTM D5185m <0.1 | <b>0</b> | ---      | ---      |
| Phosphorus   | ppm    | ASTM D5185m <0.1 | <b>0</b> | ---      | ---      |
| Zinc         | ppm    | ASTM D5185m <0.1 | <b>1</b> | ---      | ---      |

| SAMPLE IMAGES | method | limit/base | current | history1 | history2 |
|---------------|--------|------------|---------|----------|----------|
| Color         |        |            |         |          |          |
| Bottom        |        |            |         |          |          |

## GRAPHS



**Laboratory** : WearCheck USA - 501 Madison Ave., Cary, NC 27513  
**Sample No.** : WC0953900      **Received** : 07 Jun 2024  
**Lab Number** : **06202395**      **Tested** : 13 Jun 2024  
**Unique Number** : 11069856      **Diagnosed** : 13 Jun 2024 - Elizabeth Valachovic  
**Test Package** : DF-2 ( Additional Tests: Fuel, Screen )

**PETROLEUM RECOVERY SERVICES**  
 210 POWELL DR  
 SUMMERVILLE, SC  
 US 29483  
 Contact: AJAY EL  
 Ajay@prsfuel.com  
 T: (843)225-1777  
 F:

To discuss this sample report, contact Customer Service at 1-800-237-1369.  
 \* - Denotes test methods that are outside of the ISO 17025 scope of accreditation.  
 Statements of conformity to specifications are based on the simple acceptance decision rule (JCGM 106:2012)