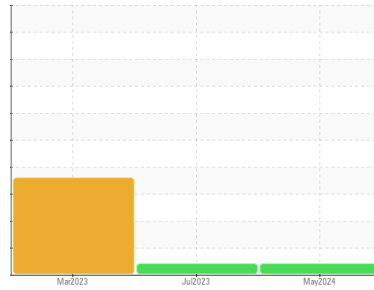




OIL ANALYSIS REPORT

Sample Rating Trend



VIS DEBRIS



Machine Id
LIM_MLU2 LIM_MLU2
 Component
Lube System
 Fluid
{not provided} (--- GAL)

DIAGNOSIS

▲ Recommendation

We recommend you service the filters on this component if applicable. Resample at the next service interval to monitor.

Wear

All component wear rates are normal.

▲ Contamination

Moderate concentration of visible dirt/debris present in the oil.

Fluid Condition

The AN level is acceptable for this fluid. The condition of the oil is suitable for further service.

SAMPLE INFORMATION		method	limit/base	current	history1	history2
Sample Number	Client Info			RP0037264	RP0033079	RP0032768
Sample Date	Client Info			29 May 2024	20 Jul 2023	22 Mar 2023
Machine Age	hrs	Client Info		0	0	0
Oil Age	hrs	Client Info		0	0	0
Oil Changed	Client Info			N/A	N/A	N/A
Sample Status				ABNORMAL	ABNORMAL	ABNORMAL

WEAR METALS		method	limit/base	current	history1	history2
Iron	ppm	ASTM D5185m	>20	2	11	7
Chromium	ppm	ASTM D5185m	>20	0	0	0
Nickel	ppm	ASTM D5185m	>20	0	0	0
Titanium	ppm	ASTM D5185m		0	<1	0
Silver	ppm	ASTM D5185m		0	0	0
Aluminum	ppm	ASTM D5185m	>20	0	<1	<1
Lead	ppm	ASTM D5185m	>20	0	0	0
Copper	ppm	ASTM D5185m	>20	9	8	14
Tin	ppm	ASTM D5185m	>20	0	<1	1
Vanadium	ppm	ASTM D5185m		<1	<1	0
Cadmium	ppm	ASTM D5185m		0	0	0

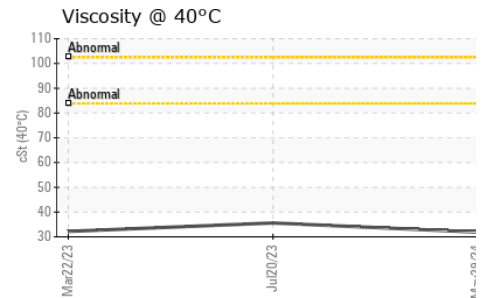
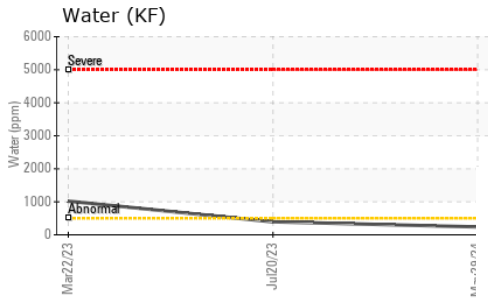
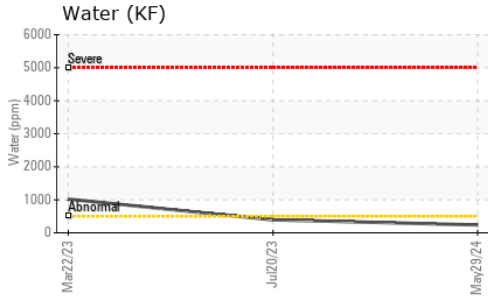
ADDITIVES		method	limit/base	current	history1	history2
Boron	ppm	ASTM D5185m		0	0	0
Barium	ppm	ASTM D5185m		0	0	0
Molybdenum	ppm	ASTM D5185m		0	0	0
Manganese	ppm	ASTM D5185m		<1	<1	0
Magnesium	ppm	ASTM D5185m		65	73	70
Calcium	ppm	ASTM D5185m		8	8	8
Phosphorus	ppm	ASTM D5185m		40	50	115
Zinc	ppm	ASTM D5185m		44	33	44

CONTAMINANTS		method	limit/base	current	history1	history2
Silicon	ppm	ASTM D5185m	>15	<1	<1	2
Sodium	ppm	ASTM D5185m		2	2	<1
Potassium	ppm	ASTM D5185m	>20	0	1	0
Water	%	ASTM D6304	>0.05	0.023	0.039	▲ 0.102
ppm Water	ppm	ASTM D6304	>500	239	393.5	▲ 1020

FLUID DEGRADATION		method	limit/base	current	history1	history2
Acid Number (AN)	mg KOH/g	ASTM D8045		0.33	0.33	0.43

VISUAL		method	limit/base	current	history1	history2
White Metal	scalar	*Visual	NONE	NONE	NONE	NONE
Yellow Metal	scalar	*Visual	NONE	NONE	NONE	NONE
Precipitate	scalar	*Visual	NONE	NONE	NONE	NONE
Silt	scalar	*Visual	NONE	NONE	NONE	▲ HEAVY
Debris	scalar	*Visual	NONE	▲ MODER	▲ MODER	▲ MODER
Sand/Dirt	scalar	*Visual	NONE	NONE	NONE	NONE
Appearance	scalar	*Visual	NORML	NORML	NORML	● HAZY
Odor	scalar	*Visual	NORML	NORML	NORML	NORML
Emulsified Water	scalar	*Visual	>0.05	NEG	NEG	▲ 0.2%
Free Water	scalar	*Visual		NEG	NEG	NEG

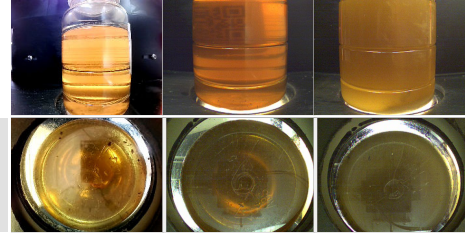
OIL ANALYSIS REPORT



FLUID PROPERTIES	method	limit/base	current	history1	history2
Visc @ 40°C	cSt	ASTM D445	31.9	35.6	32.2

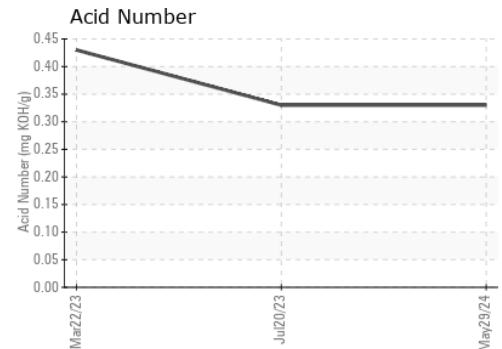
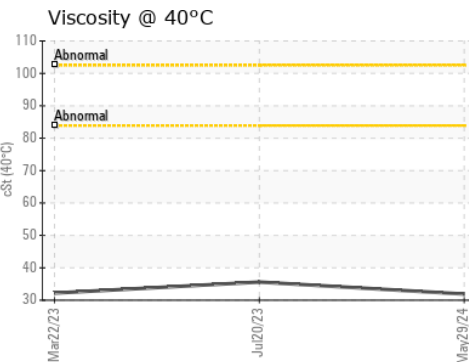
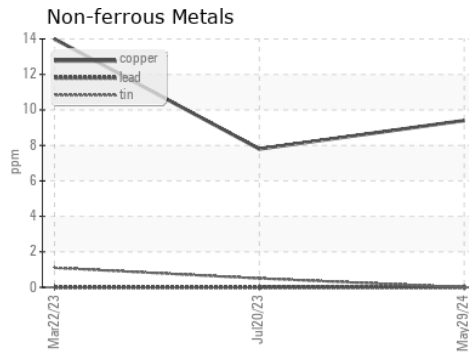
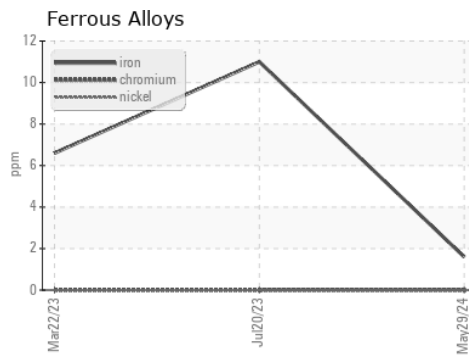
SAMPLE IMAGES	method	limit/base	current	history1	history2
---------------	--------	------------	---------	----------	----------

Color



Bottom

GRAPHS



Certificate L2367

Laboratory : WearCheck USA - 501 Madison Ave., Cary, NC 27513
Sample No. : RP0037264
Lab Number : **06202849**
Unique Number : 11070310
Test Package : IND 2
Received : 07 Jun 2024
Tested : 10 Jun 2024
Diagnosed : 10 Jun 2024 - Don Baldrige

ENERGY TRANSFER - LIMA
 1520 BUCKEYE RD
 LIMA, OH
 US 45804

Contact: ANDREW WYDERKA
 andrew.wyderka@energytransfer.com
 T: (419)618-1505

To discuss this sample report, contact Customer Service at 1-800-237-1369.

* - Denotes test methods that are outside of the ISO 17025 scope of accreditation.

Statements of conformity to specifications are based on the simple acceptance decision rule (JCGM 106:2012)