

Area

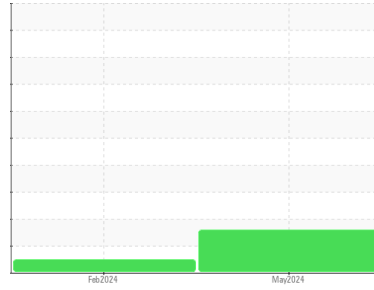
PALLUBE 32

Machine Id

SULLIVAN PALATEK 1407150020

Component

Compressor



DIAGNOSIS

▲ Recommendation

The filter change at the time of sampling has been noted. Resample at the next service interval to monitor.

Wear

All component wear rates are normal.

▲ Contamination

There is a moderate concentration of water present in the oil.

Fluid Condition

The AN level is acceptable for this fluid. The condition of the oil is suitable for further service.

SAMPLE INFORMATION		method	limit/base	current	history1	history2
Sample Number	Client Info			UCS06202916	UCS06111546	---
Sample Date	Client Info			16 May 2024	29 Feb 2024	---
Machine Age	hrs	Client Info		20420	20006	---
Oil Age	hrs	Client Info		1432	1018	---
Oil Changed	Client Info			Not Chngd	Not Chngd	---
Sample Status				ABNORMAL	NORMAL	---

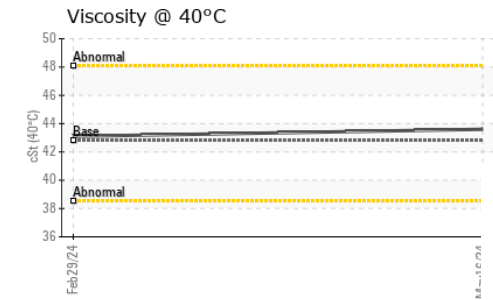
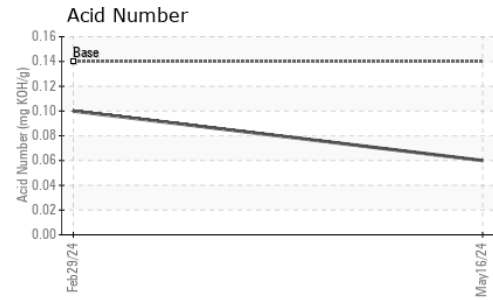
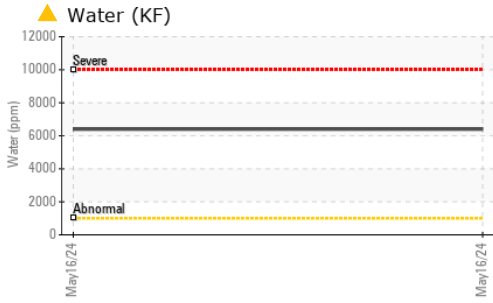
WEAR METALS		method	limit/base	current	history1	history2
Iron	ppm	ASTM D5185m	>50	0	0	---
Chromium	ppm	ASTM D5185m	>10	0	<1	---
Nickel	ppm	ASTM D5185m		0	0	---
Titanium	ppm	ASTM D5185m		0	0	---
Silver	ppm	ASTM D5185m		0	0	---
Aluminum	ppm	ASTM D5185m	>25	0	2	---
Lead	ppm	ASTM D5185m	>25	<1	0	---
Copper	ppm	ASTM D5185m	>50	0	<1	---
Tin	ppm	ASTM D5185m	>15	<1	0	---
Vanadium	ppm	ASTM D5185m		<1	0	---
Cadmium	ppm	ASTM D5185m		0	0	---

ADDITIVES		method	limit/base	current	history1	history2
Boron	ppm	ASTM D5185m	1	0	0	---
Barium	ppm	ASTM D5185m	730	297	365	---
Molybdenum	ppm	ASTM D5185m	0	0	0	---
Manganese	ppm	ASTM D5185m	0.0	<1	0	---
Magnesium	ppm	ASTM D5185m	0	<1	<1	---
Calcium	ppm	ASTM D5185m	0	2	6	---
Phosphorus	ppm	ASTM D5185m	0	19	28	---
Zinc	ppm	ASTM D5185m	0	4	0	---
Sulfur	ppm	ASTM D5185m	590	660	559	---

CONTAMINANTS		method	limit/base	current	history1	history2
Silicon	ppm	ASTM D5185m	>25	<1	0	---
Sodium	ppm	ASTM D5185m		37	44	---
Potassium	ppm	ASTM D5185m	>20	2	3	---
Water	%	ASTM D6304	>0.1	▲ 0.640	---	---
ppm Water	ppm	ASTM D6304	>1000	▲ 6400	---	---

FLUID DEGRADATION		method	limit/base	current	history1	history2
Acid Number (AN)	mg KOH/g	ASTM D8045	0.14	0.06	0.10	---

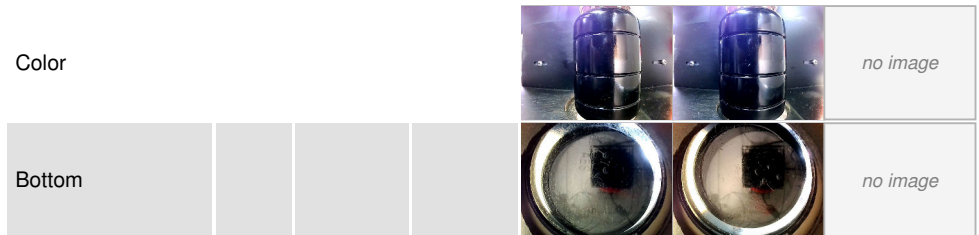
OIL ANALYSIS REPORT



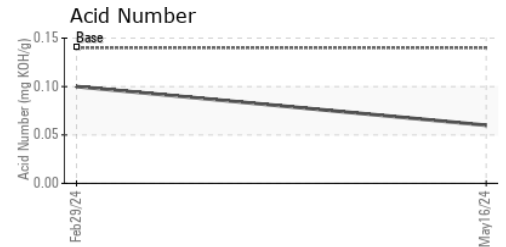
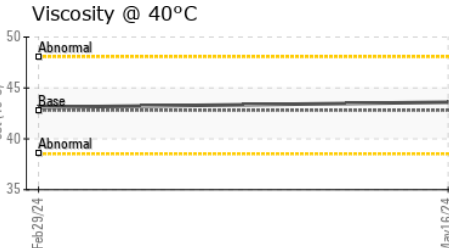
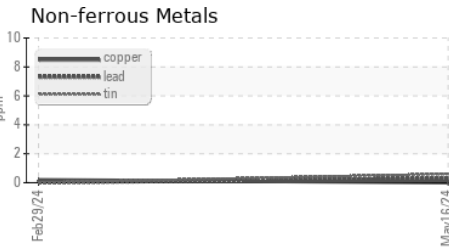
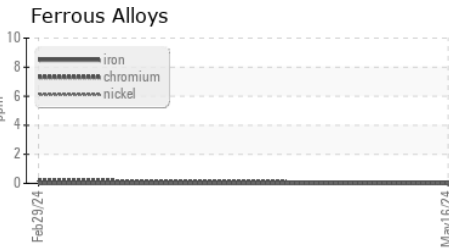
VISUAL	method	limit/base	current	history1	history2
White Metal	scalar	*Visual	NONE	NONE	---
Yellow Metal	scalar	*Visual	NONE	NONE	---
Precipitate	scalar	*Visual	NONE	NONE	---
Silt	scalar	*Visual	NONE	NONE	---
Debris	scalar	*Visual	NONE	NONE	---
Sand/Dirt	scalar	*Visual	NONE	NONE	---
Appearance	scalar	*Visual	NORML	NORML	---
Odor	scalar	*Visual	NORML	NORML	---
Emulsified Water	scalar	*Visual	>0.1	0.2%	NEG
Free Water	scalar	*Visual		NEG	---

FLUID PROPERTIES	method	limit/base	current	history1	history2
Visc @ 40°C	cSt	ASTM D445	42.8	43.6	43.1

SAMPLE IMAGES	method	limit/base	current	history1	history2
---------------	--------	------------	---------	----------	----------



GRAPHS



Certificate L2367

Laboratory : WearCheck USA - 501 Madison Ave., Cary, NC 27513
Sample No. : UCS06202916 **Received** : 07 Jun 2024
Lab Number : 06202916 **Tested** : 11 Jun 2024
Unique Number : 11070377 **Diagnosed** : 11 Jun 2024 - Jonathan Hester
Test Package : IND 2 (Additional Tests: KF)

BLAKE AND PENDLETON

MEMPHIS, TN
US 38133

Contact: JAY GIANNINI
JGIANNINI@BLAKEANDPENDLETON.COM

To discuss this sample report, contact Customer Service at 1-800-237-1369.

* - Denotes test methods that are outside of the ISO 17025 scope of accreditation.

Statements of conformity to specifications are based on the simple acceptance decision rule (JCGM 106:2012)

T:
F: