

Area

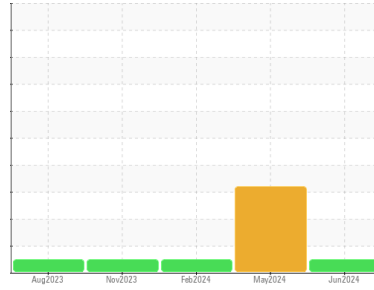
PALLUBE 32

Machine Id

SULLIVAN PALATEK 21FE002279 - WEST MEMPHIS STEEL

Component

Compressor



DIAGNOSIS

Recommendation

Resample at the next service interval to monitor.

Wear

All component wear rates are normal.

Contamination

There is no indication of any contamination in the oil.

Fluid Condition

The AN level is acceptable for this fluid. The condition of the oil is suitable for further service.

SAMPLE INFORMATION

	method	limit/base	current	history1	history2
Sample Number	Client Info		UCS06202935	UCS06182991	UCS06095680
Sample Date	Client Info		04 Jun 2024	14 May 2024	13 Feb 2024
Machine Age	hrs	Client Info	15314	15052	13461
Oil Age	hrs	Client Info	0	2595	1005
Oil Changed	Client Info		Changed	Not Changd	Not Changd
Sample Status			NORMAL	SEVERE	NORMAL

CONTAMINATION

	method	limit/base	current	history1	history2
Water	WC Method	>0.1	NEG	NEG	NEG

WEAR METALS

	method	limit/base	current	history1	history2
Iron	ppm	ASTM D5185m >50	0	0	0
Chromium	ppm	ASTM D5185m >10	0	0	0
Nickel	ppm	ASTM D5185m	0	0	0
Titanium	ppm	ASTM D5185m	0	0	0
Silver	ppm	ASTM D5185m	0	<1	0
Aluminum	ppm	ASTM D5185m >25	0	0	<1
Lead	ppm	ASTM D5185m >25	<1	<1	0
Copper	ppm	ASTM D5185m >50	0	<1	<1
Tin	ppm	ASTM D5185m >15	1	<1	<1
Vanadium	ppm	ASTM D5185m	<1	<1	0
Cadmium	ppm	ASTM D5185m	0	0	0

ADDITIVES

	method	limit/base	current	history1	history2
Boron	ppm	ASTM D5185m 1	0	0	0
Barium	ppm	ASTM D5185m 730	366	▲ 27	322
Molybdenum	ppm	ASTM D5185m 0	0	0	0
Manganese	ppm	ASTM D5185m 0.0	<1	0	0
Magnesium	ppm	ASTM D5185m 0	2	0	0
Calcium	ppm	ASTM D5185m 0	5	0	0
Phosphorus	ppm	ASTM D5185m 0	19	0	0
Zinc	ppm	ASTM D5185m 0	4	0	0
Sulfur	ppm	ASTM D5185m 590	927	374	456

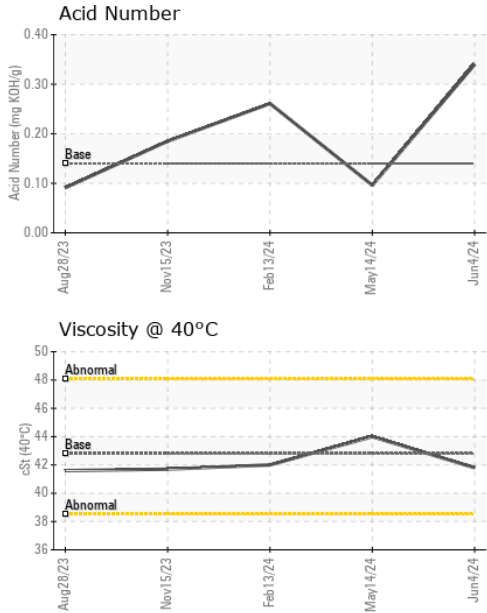
CONTAMINANTS

	method	limit/base	current	history1	history2
Silicon	ppm	ASTM D5185m >25	<1	<1	1
Sodium	ppm	ASTM D5185m	5	80	66
Potassium	ppm	ASTM D5185m >20	2	3	4

FLUID DEGRADATION

	method	limit/base	current	history1	history2
Acid Number (AN)	mg KOH/g	ASTM D8045 0.14	0.34	0.096	0.261

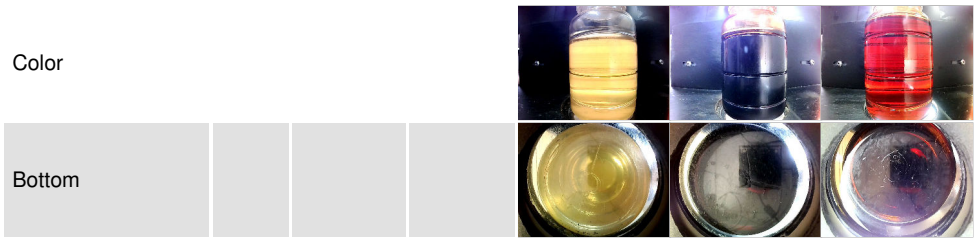
OIL ANALYSIS REPORT



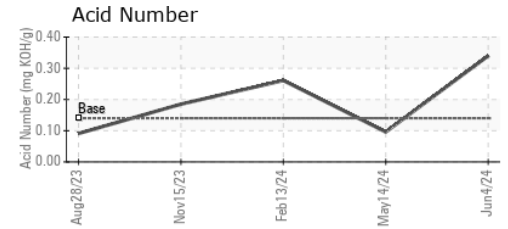
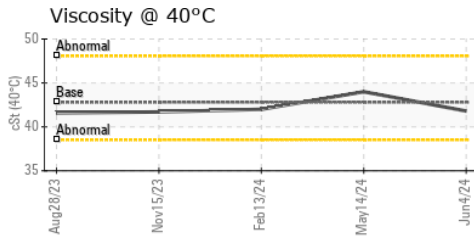
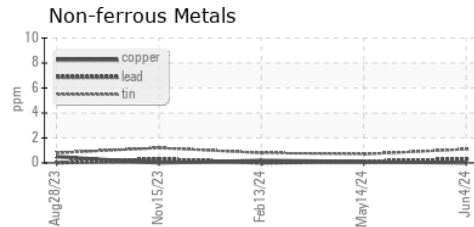
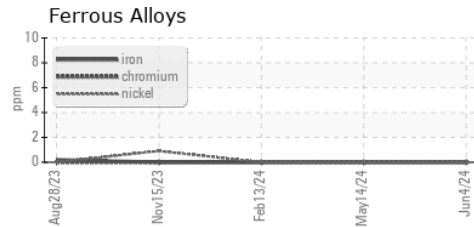
VISUAL	method	limit/base	current	history1	history2
White Metal	scalar	*Visual	NONE	NONE	NONE
Yellow Metal	scalar	*Visual	NONE	NONE	NONE
Precipitate	scalar	*Visual	NONE	NONE	NONE
Silt	scalar	*Visual	NONE	NONE	NONE
Debris	scalar	*Visual	NONE	LIGHT	▲ MODER
Sand/Dirt	scalar	*Visual	NONE	NONE	NONE
Appearance	scalar	*Visual	NORML	NORML	NORML
Odor	scalar	*Visual	NORML	NORML	NORML
Emulsified Water	scalar	*Visual	>0.1	NEG	0.2%
Free Water	scalar	*Visual		NEG	NEG

FLUID PROPERTIES	method	limit/base	current	history1	history2
Visc @ 40°C	cSt	ASTM D445	42.8	41.8	44.0

SAMPLE IMAGES	method	limit/base	current	history1	history2
---------------	--------	------------	---------	----------	----------



GRAPHS



Laboratory : WearCheck USA - 501 Madison Ave., Cary, NC 27513
Sample No. : UCS06202935 **Received** : 07 Jun 2024
Lab Number : 06202935 **Tested** : 10 Jun 2024
Unique Number : 11070396 **Diagnosed** : 10 Jun 2024 - Don Baldrige
Test Package : IND 2

BLAKE AND PENDLETON
 MEMPHIS, TN
 US 38133
 Contact: JAY GIANNINI
 JGIANNINI@BLAKEANDPENDLETON.COM

To discuss this sample report, contact Customer Service at 1-800-237-1369.
 * - Denotes test methods that are outside of the ISO 17025 scope of accreditation.
 Statements of conformity to specifications are based on the simple acceptance decision rule (JCGM 106:2012)