



FUEL REPORT

Sample Rating Trend



NORMAL



Area
QTS ATLANTA GA DC1 [4763]
 Machine Id
[QTS ATLANTA GA DC1] GF4
 Component
Diesel Fuel
 Fluid
No.2 DIESEL FUEL (ULTRALOW SULPHUR) (4200 GAL)

DIAGNOSIS

Recommendation

All laboratory tests indicate that this sample meets specifications for No.2 ultra-low-sulfur diesel fuel.

Corrosion

All metal levels are normal indicating no corrosion in the system.

Contaminants

The water content is negligible. There is no bacteria or fungus (yeast and/or mold) indicated in the sample. There is no indication of any contamination in the fuel. The amount and size of particulates present in the system are acceptable.

Fuel Condition

Sulfur value derived by ASTM D5453 method for ULSD validation. Sulfur level is acceptable for ULSD specification.

SAMPLE INFORMATION		method	limit/base	current	history1	history2
Sample Number	Client Info			WC0953931	---	---
Sample Date	Client Info			22 May 2024	---	---
Machine Age	hrs	Client Info		0	---	---
Sample Status				NORMAL	---	---

PHYSICAL PROPERTIES		method	limit/base	current	history1	history2
Fuel Color	text	*Visual Screen	Yellow	Red	---	---
ASTM Color	scalar	*ASTM D1500		L4.5	---	---
Visc @ 40°C	cSt	ASTM D445	3.0	2.27	---	---
Pensky-Martens Flash Point	°C	*PMCC Calculated	52	63.9	---	---

SULFUR CONTENT		method	limit/base	current	history1	history2
Sulfur	ppm	ASTM D5185m	10	9	---	---
Sulfur (UVF)	ppm	ASTM D5453		9	---	---

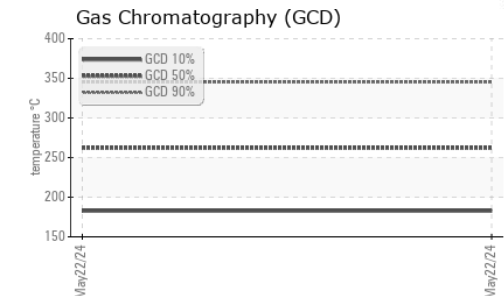
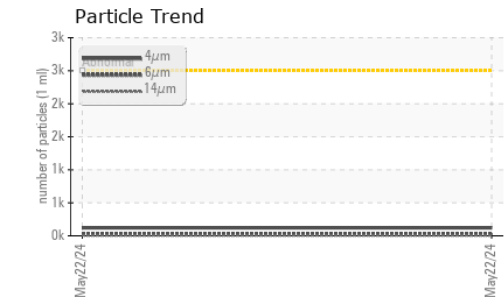
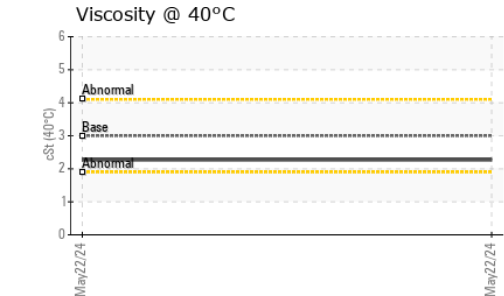
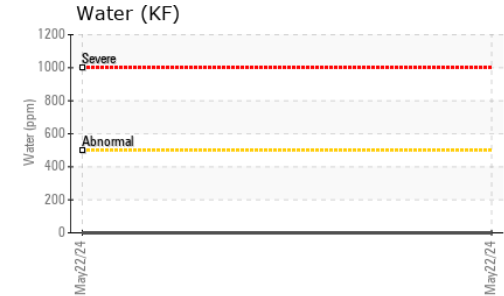
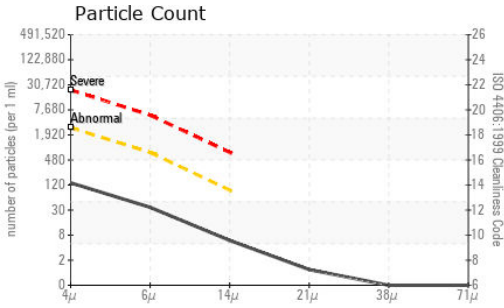
DISTILLATION		method	limit/base	current	history1	history2
Initial Boiling Point	°C	ASTM D86	165	175	---	---
5% Distillation Point	°C	ASTM D86		195	---	---
10% Distill Point	°C	ASTM D86	201	204	---	---
15% Distillation Point	°C	ASTM D86		212	---	---
20% Distill Point	°C	ASTM D86	216	219	---	---
30% Distill Point	°C	ASTM D86	230	233	---	---
40% Distill Point	°C	ASTM D86	243	246	---	---
50% Distill Point	°C	ASTM D86	255	259	---	---
60% Distill Point	°C	ASTM D86	267	273	---	---
70% Distill Point	°C	ASTM D86	280	287	---	---
80% Distill Point	°C	ASTM D86	295	303	---	---
85% Distillation Point	°C	ASTM D86		314	---	---
90% Distill Point	°C	ASTM D86	310	325	---	---
95% Distillation Point	°C	ASTM D86		343	---	---
Final Boiling Point	°C	ASTM D86	341	358	---	---

IGNITION QUALITY		method	limit/base	current	history1	history2
API Gravity		ASTM D7777	37.7	37	---	---
Cetane Index		ASTM D4737	<40.0	48	---	---

CONTAMINANTS		method	limit/base	current	history1	history2
Silicon	ppm	ASTM D5185m	<1.0	0	---	---
Sodium	ppm	ASTM D5185m	<0.1	2	---	---
Potassium	ppm	ASTM D5185m	<0.1	2	---	---
Water	%	ASTM D6304	<0.05	0.00	---	---
ppm Water	ppm	ASTM D6304	<500	0	---	---
% Gasoline	%	*In-House	<0.50	0.0	---	---
% Biodiesel	%	*In-House	<20.0	0.0	---	---



FUEL REPORT

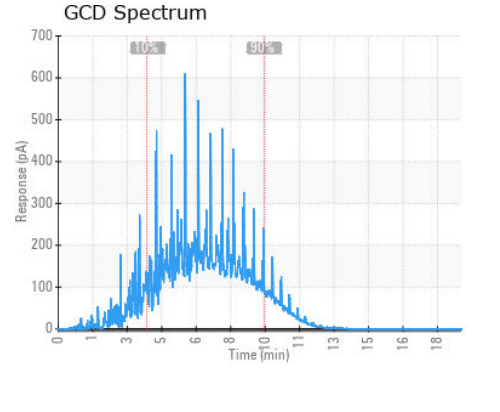
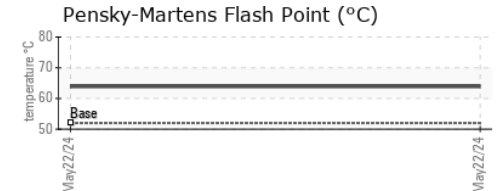
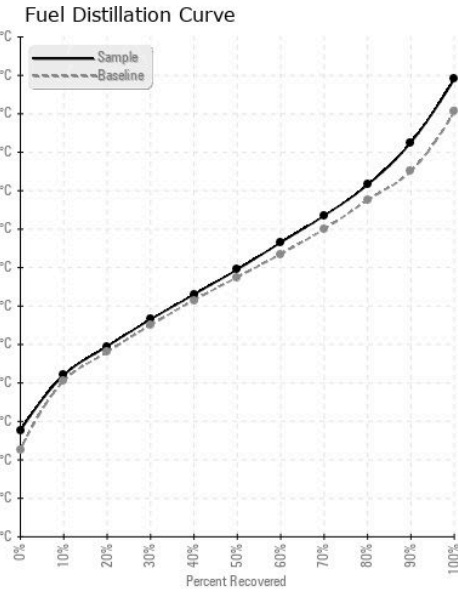


FLUID CLEANLINESS	method	limit/base	current	history1	history2
Particles >4µm	ASTM D7647	>2500	120	---	---
Particles >6µm	ASTM D7647	>640	31	---	---
Particles >14µm	ASTM D7647	>80	5	---	---
Particles >21µm	ASTM D7647	>20	1	---	---
Particles >38µm	ASTM D7647	>4	0	---	---
Particles >71µm	ASTM D7647	>3	0	---	---
Oil Cleanliness	ISO 4406 (c)	>18/16/13	14/12/10	---	---

HEAVY METALS	method	limit/base	current	history1	history2
Aluminum	ppm	ASTM D5185m <0.1	0	---	---
Nickel	ppm	ASTM D5185m <0.1	<1	---	---
Lead	ppm	ASTM D5185m <0.1	0	---	---
Vanadium	ppm	ASTM D5185m <0.1	0	---	---
Iron	ppm	ASTM D5185m <0.1	0	---	---
Calcium	ppm	ASTM D5185m <0.1	<1	---	---
Magnesium	ppm	ASTM D5185m <0.1	<1	---	---
Phosphorus	ppm	ASTM D5185m <0.1	10	---	---
Zinc	ppm	ASTM D5185m <0.1	5	---	---

SAMPLE IMAGES	method	limit/base	current	history1	history2
Color				no image	no image
Bottom				no image	no image

GRAPHS



Laboratory : WearCheck USA - 501 Madison Ave., Cary, NC 27513
Sample No. : WC0953931 **Received** : 07 Jun 2024
Lab Number : **06203210** **Tested** : 13 Jun 2024
Unique Number : 11070671 **Diagnosed** : 13 Jun 2024 - Elizabeth Valachovic
Test Package : DF-2 (Additional Tests: Fuel, Screen)

PETROLEUM RECOVERY SERVICES
 210 POWELL DR
 SUMMERVILLE, SC
 US 29483
 Contact: AJAY EL
 Ajay@prsfuel.com
 T: (843)225-1777
 F:

To discuss this sample report, contact Customer Service at 1-800-237-1369.
 * - Denotes test methods that are outside of the ISO 17025 scope of accreditation.
 Statements of conformity to specifications are based on the simple acceptance decision rule (JCGM 106:2012)