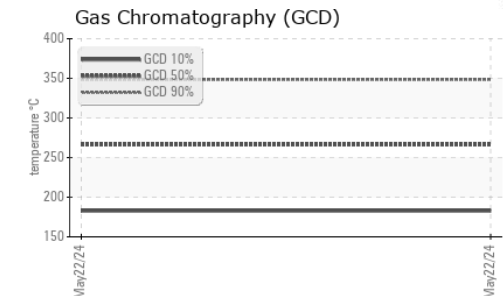
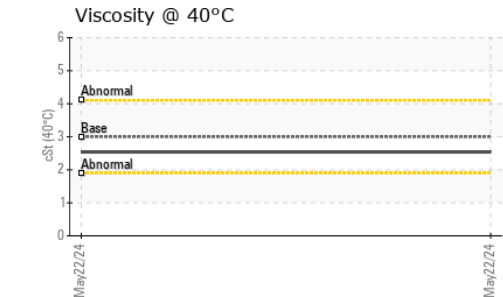
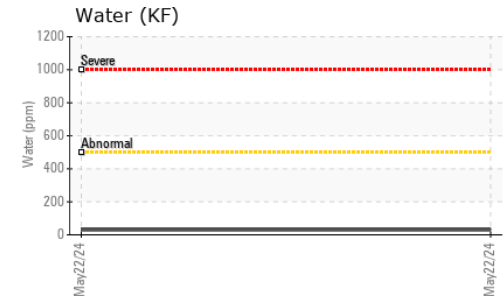
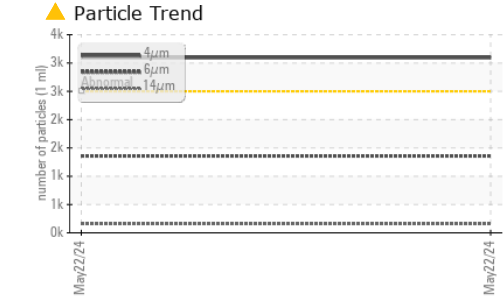
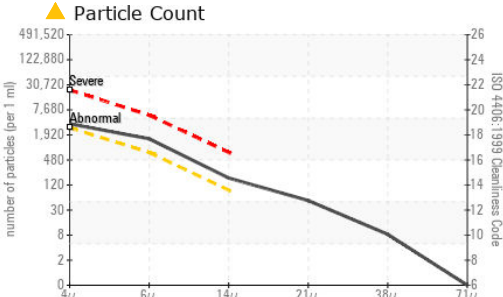






# FUEL REPORT

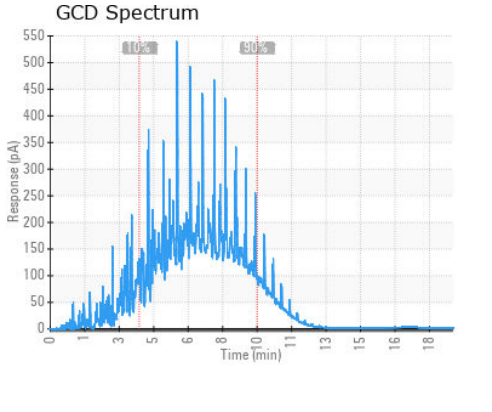
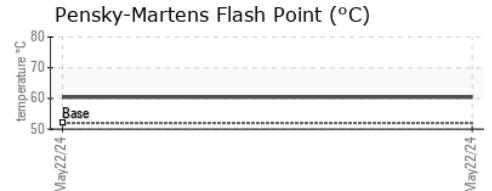
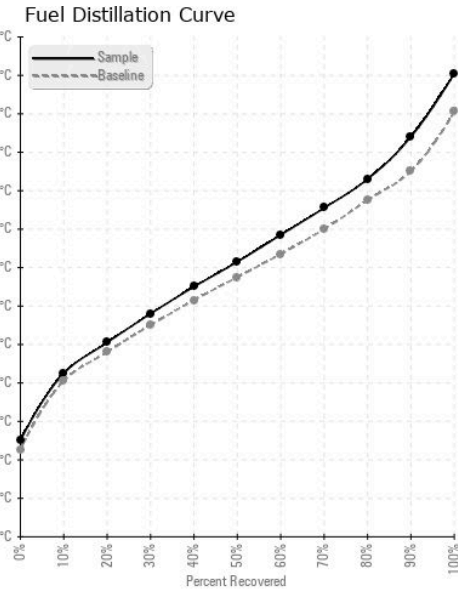


FLUID CLEANLINESS	method	limit/base	current	history1	history2
Particles >4µm	ASTM D7647	>2500	▲ 3094	---	---
Particles >6µm	ASTM D7647	>640	▲ 1358	---	---
Particles >14µm	ASTM D7647	>80	▲ 156	---	---
Particles >21µm	ASTM D7647	>20	▲ 45	---	---
Particles >38µm	ASTM D7647	>4	▲ 7	---	---
Particles >71µm	ASTM D7647	>3	▲ 0	---	---
Oil Cleanliness	ISO 4406 (c)	>18/16/13	▲ 19/18/14	---	---

HEAVY METALS	method	limit/base	current	history1	history2
Aluminum	ppm	ASTM D5185m <0.1	0	---	---
Nickel	ppm	ASTM D5185m <0.1	<1	---	---
Lead	ppm	ASTM D5185m <0.1	0	---	---
Vanadium	ppm	ASTM D5185m <0.1	0	---	---
Iron	ppm	ASTM D5185m <0.1	0	---	---
Calcium	ppm	ASTM D5185m <0.1	1	---	---
Magnesium	ppm	ASTM D5185m <0.1	<1	---	---
Phosphorus	ppm	ASTM D5185m <0.1	14	---	---
Zinc	ppm	ASTM D5185m <0.1	5	---	---

SAMPLE IMAGES	method	limit/base	current	history1	history2
Color				no image	no image
Bottom				no image	no image

## GRAPHS



**Laboratory** : WearCheck USA - 501 Madison Ave., Cary, NC 27513  
**Sample No.** : WC0953917      **Received** : 07 Jun 2024  
**Lab Number** : 06203222      **Tested** : 13 Jun 2024  
**Unique Number** : 11070683      **Diagnosed** : 13 Jun 2024 - Elizabeth Valachovic  
**Test Package** : DF-2 ( Additional Tests: Fuel, Screen )

**PETROLEUM RECOVERY SERVICES**  
 210 POWELL DR  
 SUMMERVILLE, SC  
 US 29483  
 Contact: AJAY EL  
 Ajay@prsfuel.com  
 T: (843)225-1777  
 F:

To discuss this sample report, contact Customer Service at 1-800-237-1369.  
 \* - Denotes test methods that are outside of the ISO 17025 scope of accreditation.  
 Statements of conformity to specifications are based on the simple acceptance decision rule (JCGM 106:2012)