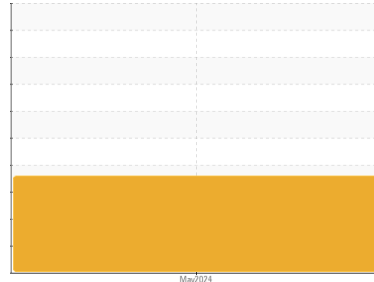




FUEL REPORT

Sample Rating Trend



WATER



Area

QTS ATLANTA GA DC1 [4787]

Machine Id

[QTS ATLANTA GA DC1] CUMMINS 1 CENTER

Component

Diesel Fuel

Fluid

No.2 DIESEL FUEL (ULTRALOW SULPHUR) (10200 GAL)

DIAGNOSIS

Recommendation

We advise that you follow the water drain-off procedure for this component, and use off-line filtration to improve the cleanliness of the system fluid.

Corrosion

All metal levels are normal indicating no corrosion in the system.

Contaminants

There is a high amount of particulates present in the fuel. Free water present. Moderate concentration of visible dirt/debris present in the fuel. There is no bacteria or fungus (yeast and/or mold) indicated in the sample.

Fuel Condition

Sulfur value derived by ASTM D5453 method for ULSD validation. Sulfur level is acceptable for ULSD specification.

SAMPLE INFORMATION

	method	limit/base	current	history1	history2
Sample Number	Client Info		WC0953976	---	---
Sample Date	Client Info		22 May 2024	---	---
Machine Age	hrs	Client Info	0	---	---
Sample Status			ABNORMAL	---	---

PHYSICAL PROPERTIES

	method	limit/base	current	history1	history2
Fuel Color	text	*Visual Screen	Yellow	Red	---
ASTM Color	scalar	*ASTM D1500		L4.5	---
Visc @ 40°C	cSt	ASTM D445	3.0	2.46	---
Pensky-Martens Flash Point	°C	*PMCC Calculated	52	59.5	---

SULFUR CONTENT

	method	limit/base	current	history1	history2
Sulfur	ppm	ASTM D5185m	10	1	---
Sulfur (UVF)	ppm	ASTM D5453		8	---

DISTILLATION

	method	limit/base	current	history1	history2
Initial Boiling Point	°C	ASTM D86	165	170	---
5% Distillation Point	°C	ASTM D86		190	---
10% Distill Point	°C	ASTM D86	201	200	---
15% Distillation Point	°C	ASTM D86		208	---
20% Distill Point	°C	ASTM D86	216	216	---
30% Distill Point	°C	ASTM D86	230	231	---
40% Distill Point	°C	ASTM D86	243	245	---
50% Distill Point	°C	ASTM D86	255	260	---
60% Distill Point	°C	ASTM D86	267	274	---
70% Distill Point	°C	ASTM D86	280	288	---
80% Distill Point	°C	ASTM D86	295	304	---
85% Distillation Point	°C	ASTM D86		315	---
90% Distill Point	°C	ASTM D86	310	326	---
95% Distillation Point	°C	ASTM D86		345	---
Final Boiling Point	°C	ASTM D86	341	362	---

IGNITION QUALITY

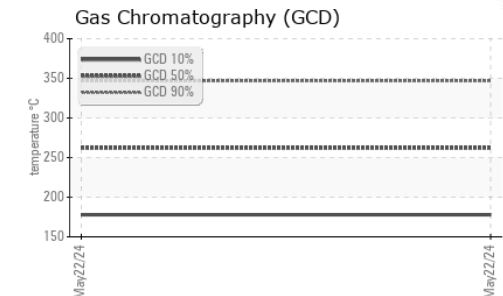
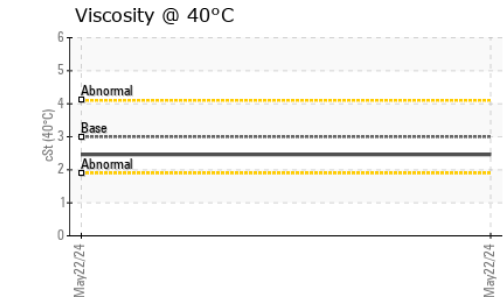
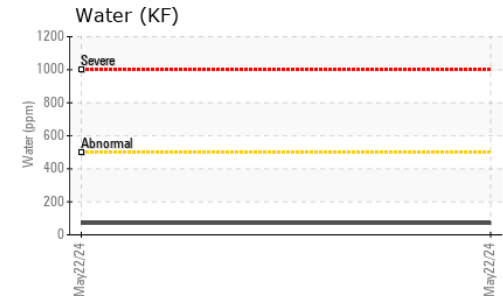
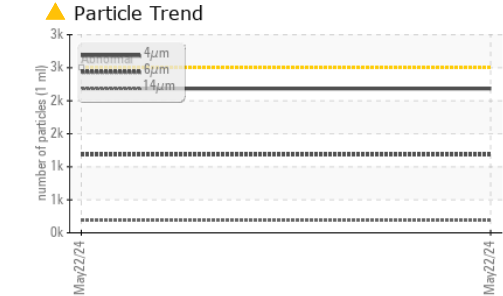
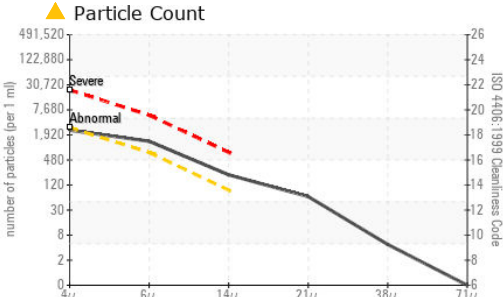
	method	limit/base	current	history1	history2
API Gravity	ASTM D7777	37.7	36	---	---
Cetane Index	ASTM D4737	<40.0	47	---	---

CONTAMINANTS

	method	limit/base	current	history1	history2
Silicon	ppm	ASTM D5185m	<1.0	0	---
Sodium	ppm	ASTM D5185m	<0.1	2	---
Potassium	ppm	ASTM D5185m	<0.1	2	---
Water	%	ASTM D6304	<0.05	0.007	---
ppm Water	ppm	ASTM D6304	<500	71	---
% Gasoline	%	*In-House	<0.50	0.0	---
% Biodiesel	%	*In-House	<20.0	0.0	---



FUEL REPORT

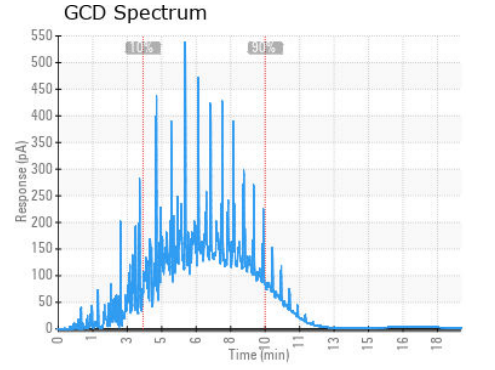
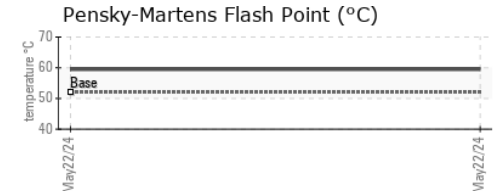
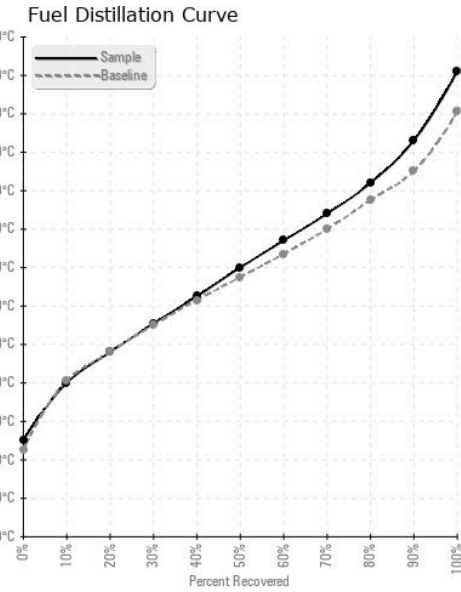


FLUID CLEANLINESS	method	limit/base	current	history1	history2
Particles >4µm	ASTM D7647	>2500	2183	---	---
Particles >6µm	ASTM D7647	>640	1183	---	---
Particles >14µm	ASTM D7647	>80	186	---	---
Particles >21µm	ASTM D7647	>20	56	---	---
Particles >38µm	ASTM D7647	>4	4	---	---
Particles >71µm	ASTM D7647	>3	0	---	---
Oil Cleanliness	ISO 4406 (c)	>18/16/13	18/17/15	---	---

HEAVY METALS	method	limit/base	current	history1	history2
Aluminum	ppm	ASTM D5185m <0.1	0	---	---
Nickel	ppm	ASTM D5185m <0.1	<1	---	---
Lead	ppm	ASTM D5185m <0.1	0	---	---
Vanadium	ppm	ASTM D5185m <0.1	0	---	---
Iron	ppm	ASTM D5185m <0.1	0	---	---
Calcium	ppm	ASTM D5185m <0.1	<1	---	---
Magnesium	ppm	ASTM D5185m <0.1	0	---	---
Phosphorus	ppm	ASTM D5185m <0.1	6	---	---
Zinc	ppm	ASTM D5185m <0.1	4	---	---

SAMPLE IMAGES	method	limit/base	current	history1	history2
Color					
Bottom					

GRAPHS



Laboratory : WearCheck USA - 501 Madison Ave., Cary, NC 27513
Sample No. : WC0953976 **Received** : 07 Jun 2024
Lab Number : **06203235** **Tested** : 18 Jun 2024
Unique Number : 11070696 **Diagnosed** : 18 Jun 2024 - Doug Bogart
Test Package : DF-2 (Additional Tests: Bacteria, Fuel, Screen)

PETROLEUM RECOVERY SERVICES
 210 POWELL DR
 SUMMERVILLE, SC
 US 29483
 Contact: AJAY EL
 Ajay@prsfuel.com
 T: (843)225-1777
 F:

To discuss this sample report, contact Customer Service at 1-800-237-1369.
 * - Denotes test methods that are outside of the ISO 17025 scope of accreditation.
 Statements of conformity to specifications are based on the simple acceptance decision rule (JCGM 106:2012)