



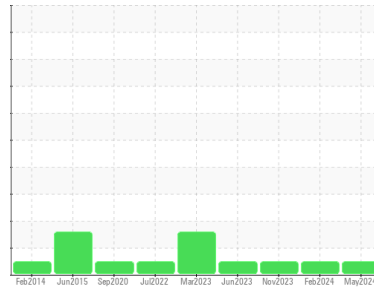
# OIL ANALYSIS REPORT

Area  
**GCCS XTEND**

Machine Id  
**ATLAS COPCO HOL023977 - VALMONT (S/N HOL023977 - 8972434614)**

Component  
**Compressor**

Sample Rating Trend



**NORMAL**



## DIAGNOSIS

### Recommendation

Resample at the next service interval to monitor.

### Wear

All component wear rates are normal.

### Contamination

There is no indication of any contamination in the oil.

### Fluid Condition

The AN level is acceptable for this fluid. The condition of the oil is suitable for further service.

## SAMPLE INFORMATION

|               | method      | limit/base  | current            | history1    | history2    |
|---------------|-------------|-------------|--------------------|-------------|-------------|
| Sample Number | Client Info |             | <b>UCH06203440</b> | UCH06091074 | UCH06006424 |
| Sample Date   | Client Info |             | <b>29 May 2024</b> | 08 Feb 2024 | 06 Nov 2023 |
| Machine Age   | hrs         | Client Info | <b>14526</b>       | 13983       | 13161       |
| Oil Age       | hrs         | Client Info | <b>0</b>           | 8000        | 6000        |
| Oil Changed   | Client Info |             | <b>Not Changed</b> | Changed     | Not Changed |
| Sample Status |             |             | <b>NORMAL</b>      | NORMAL      | NORMAL      |

## CONTAMINATION

|       | method    | limit/base | current    | history1 | history2 |
|-------|-----------|------------|------------|----------|----------|
| Water | WC Method | >0.1       | <b>NEG</b> | NEG      | NEG      |

## WEAR METALS

|          | method | limit/base      | current      | history1 | history2 |
|----------|--------|-----------------|--------------|----------|----------|
| Iron     | ppm    | ASTM D5185m >50 | <b>1</b>     | 0        | 0        |
| Chromium | ppm    | ASTM D5185m >5  | <b>&lt;1</b> | 0        | 0        |
| Nickel   | ppm    | ASTM D5185m     | <b>0</b>     | 0        | <1       |
| Titanium | ppm    | ASTM D5185m     | <b>&lt;1</b> | 0        | 0        |
| Silver   | ppm    | ASTM D5185m     | <b>0</b>     | 0        | 0        |
| Aluminum | ppm    | ASTM D5185m >15 | <b>2</b>     | 0        | 0        |
| Lead     | ppm    | ASTM D5185m >65 | <b>0</b>     | 0        | 0        |
| Copper   | ppm    | ASTM D5185m >65 | <b>15</b>    | 11       | 9        |
| Tin      | ppm    | ASTM D5185m >10 | <b>&lt;1</b> | 0        | 0        |
| Vanadium | ppm    | ASTM D5185m     | <b>0</b>     | 0        | 0        |
| Cadmium  | ppm    | ASTM D5185m     | <b>0</b>     | 0        | 0        |

## ADDITIVES

|            | method | limit/base  | current      | history1 | history2 |
|------------|--------|-------------|--------------|----------|----------|
| Boron      | ppm    | ASTM D5185m | <b>0</b>     | 0        | 0        |
| Barium     | ppm    | ASTM D5185m | <b>0</b>     | 4        | 0        |
| Molybdenum | ppm    | ASTM D5185m | <b>0</b>     | 0        | 0        |
| Manganese  | ppm    | ASTM D5185m | <b>0</b>     | 0        | 0        |
| Magnesium  | ppm    | ASTM D5185m | <b>&lt;1</b> | 0        | 0        |
| Calcium    | ppm    | ASTM D5185m | <b>0</b>     | 0        | 0        |
| Phosphorus | ppm    | ASTM D5185m | <b>272</b>   | 257      | 246      |
| Zinc       | ppm    | ASTM D5185m | <b>86</b>    | 108      | 58       |
| Sulfur     | ppm    | ASTM D5185m | <b>942</b>   | 476      | 504      |

## CONTAMINANTS

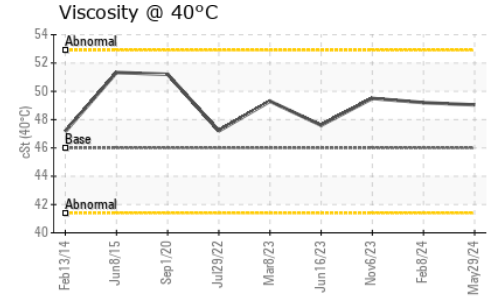
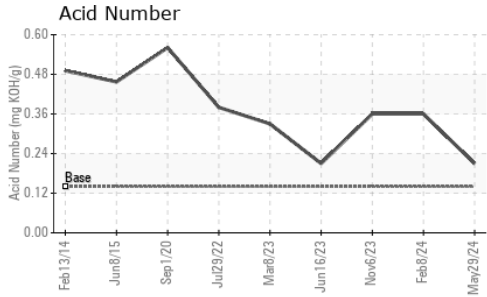
|           | method | limit/base      | current   | history1 | history2 |
|-----------|--------|-----------------|-----------|----------|----------|
| Silicon   | ppm    | ASTM D5185m >35 | <b>16</b> | 34       | 28       |
| Sodium    | ppm    | ASTM D5185m     | <b>0</b>  | 2        | <1       |
| Potassium | ppm    | ASTM D5185m >20 | <b>1</b>  | 0        | 0        |

## FLUID DEGRADATION

|                  | method   | limit/base      | current     | history1 | history2 |
|------------------|----------|-----------------|-------------|----------|----------|
| Acid Number (AN) | mg KOH/g | ASTM D8045 0.14 | <b>0.21</b> | 0.36     | 0.36     |



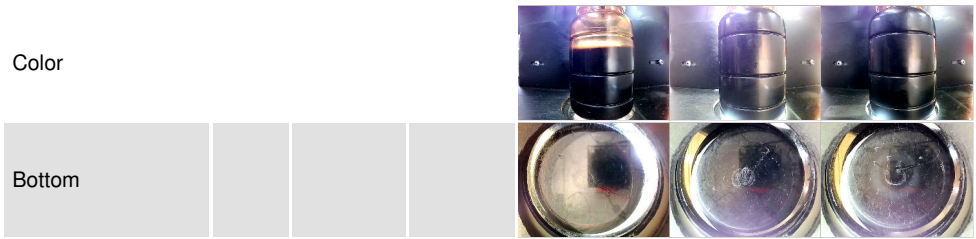
# OIL ANALYSIS REPORT



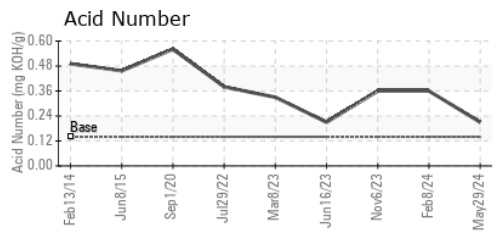
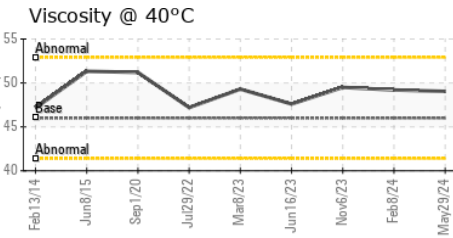
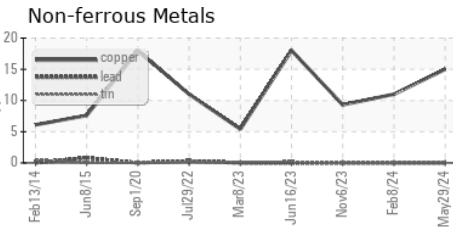
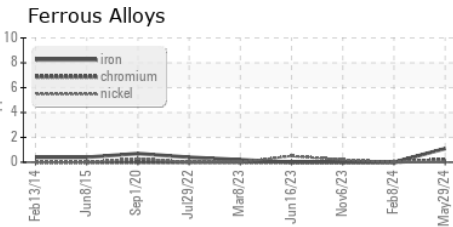
| VISUAL           | method | limit/base | current | history1 | history2 |
|------------------|--------|------------|---------|----------|----------|
| White Metal      | scalar | *Visual    | NONE    | NONE     | LIGHT    |
| Yellow Metal     | scalar | *Visual    | NONE    | NONE     | NONE     |
| Precipitate      | scalar | *Visual    | NONE    | NONE     | NONE     |
| Silt             | scalar | *Visual    | NONE    | NONE     | NONE     |
| Debris           | scalar | *Visual    | NONE    | NONE     | LIGHT    |
| Sand/Dirt        | scalar | *Visual    | NONE    | NONE     | NONE     |
| Appearance       | scalar | *Visual    | NORML   | NORML    | NORML    |
| Odor             | scalar | *Visual    | NORML   | NORML    | NORML    |
| Emulsified Water | scalar | *Visual    | >0.1    | NEG      | NEG      |
| Free Water       | scalar | *Visual    |         | NEG      | NEG      |

| FLUID PROPERTIES | method | limit/base | current | history1     | history2 |      |
|------------------|--------|------------|---------|--------------|----------|------|
| Visc @ 40°C      | cSt    | ASTM D445  | 46      | <b>49.04</b> | 49.2     | 49.5 |

| SAMPLE IMAGES | method | limit/base | current | history1 | history2 |
|---------------|--------|------------|---------|----------|----------|
|---------------|--------|------------|---------|----------|----------|



## GRAPHS



**Laboratory** : WearCheck USA - 501 Madison Ave., Cary, NC 27513  
**Sample No.** : UCH06203440      **Received** : 07 Jun 2024  
**Lab Number** : **06203440**      **Tested** : 13 Jun 2024  
**Unique Number** : 11070901      **Diagnosed** : 13 Jun 2024 - Angela Borella  
**Test Package** : IND 2

**GREEN COUNTY COMPRESSOR SERVICE**  
 11974 E 530 RD  
 CLAREMORE, OK  
 US 74019  
 Contact: ASHLEY PIGUET  
 ashley@gccs.us.com  
 T: (918)906-6343  
 F:

To discuss this sample report, contact Customer Service at 1-800-237-1369.  
 \* - Denotes test methods that are outside of the ISO 17025 scope of accreditation.  
 Statements of conformity to specifications are based on the simple acceptance decision rule (JCGM 106:2012)