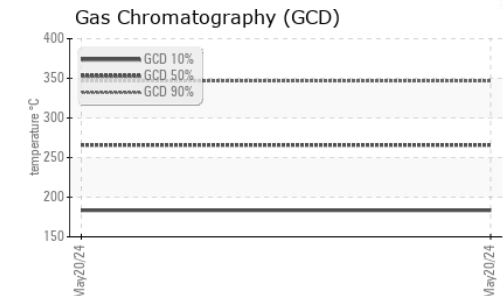
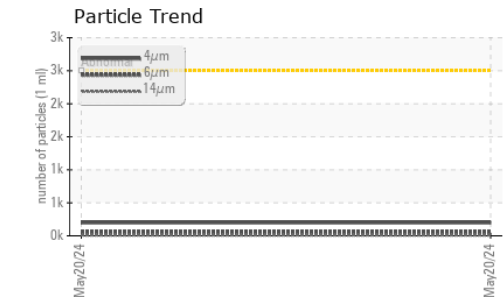
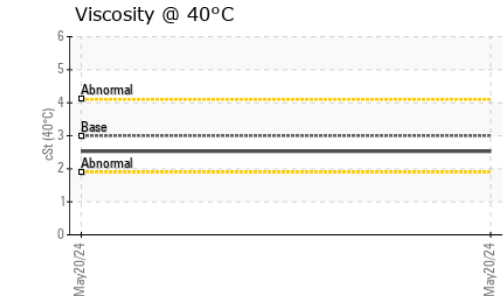
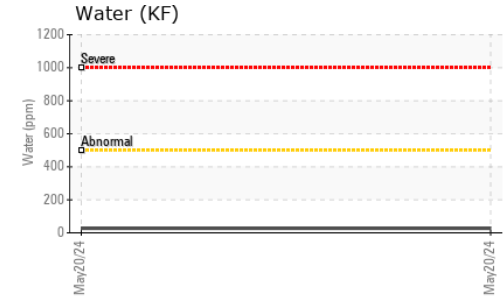
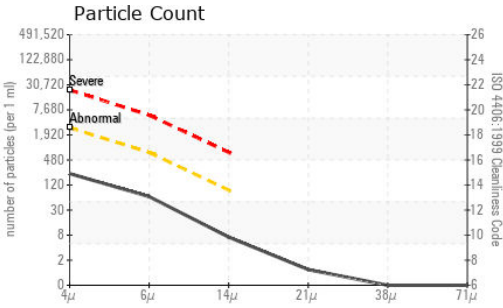




FUEL REPORT

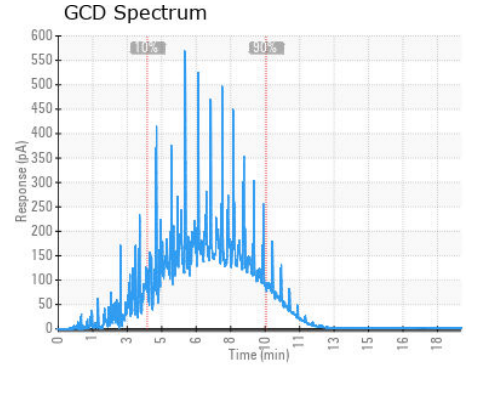
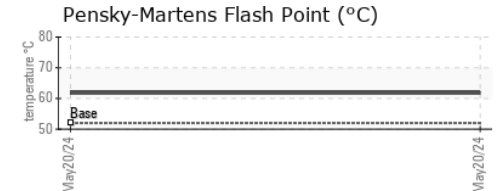
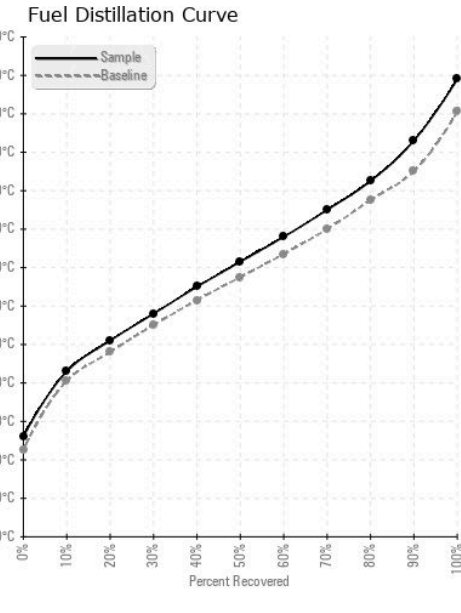


FLUID CLEANLINESS	method	limit/base	current	history1	history2
Particles >4µm	ASTM D7647	>2500	199	---	---
Particles >6µm	ASTM D7647	>640	56	---	---
Particles >14µm	ASTM D7647	>80	6	---	---
Particles >21µm	ASTM D7647	>20	1	---	---
Particles >38µm	ASTM D7647	>4	0	---	---
Particles >71µm	ASTM D7647	>3	0	---	---
Oil Cleanliness	ISO 4406 (c)	>18/16/13	15/13/10	---	---

HEAVY METALS	method	limit/base	current	history1	history2
Aluminum	ppm	ASTM D5185m <0.1	0	---	---
Nickel	ppm	ASTM D5185m <0.1	0	---	---
Lead	ppm	ASTM D5185m <0.1	1	---	---
Vanadium	ppm	ASTM D5185m <0.1	0	---	---
Iron	ppm	ASTM D5185m <0.1	<1	---	---
Calcium	ppm	ASTM D5185m <0.1	0	---	---
Magnesium	ppm	ASTM D5185m <0.1	0	---	---
Phosphorus	ppm	ASTM D5185m <0.1	0	---	---
Zinc	ppm	ASTM D5185m <0.1	0	---	---

SAMPLE IMAGES	method	limit/base	current	history1	history2	
Color					<i>no image</i>	<i>no image</i>
Bottom					<i>no image</i>	<i>no image</i>

GRAPHS



Laboratory : WearCheck USA - 501 Madison Ave., Cary, NC 27513
Sample No. : WC0953825 **Received** : 07 Jun 2024
Lab Number : **06204058** **Tested** : 14 Jun 2024
Unique Number : 11071519 **Diagnosed** : 14 Jun 2024 - Elizabeth Valachovic
Test Package : DF-2 (Additional Tests: Fuel, Screen)

PETROLEUM RECOVERY SERVICES
 210 POWELL DR
 SUMMERVILLE, SC
 US 29483
 Contact: AJAY EL
 Ajay@prsfuel.com
 T: (843)225-1777
 F:

To discuss this sample report, contact Customer Service at 1-800-237-1369.
 * - Denotes test methods that are outside of the ISO 17025 scope of accreditation.
 Statements of conformity to specifications are based on the simple acceptance decision rule (JCGM 106:2012)