



FUEL REPORT

Sample Rating Trend



NORMAL



Area
QTS ATLANTA GA DC1 [4636]
 Machine Id
[QTS ATLANTA GA DC1] GA5
 Component
Diesel Fuel
 Fluid
No.2 DIESEL FUEL (ULTRALOW SULPHUR) (3500 GAL)

DIAGNOSIS

Recommendation

No corrective action is recommended at this time. All laboratory tests indicate that this sample meets ASTM D975 specifications for No.2 ultra-low-sulphur diesel fuel.

Corrosion

All metal levels are normal indicating no corrosion in the system.

Contaminants

Light concentration of visible dirt/debris present in the fuel. There is no bacteria or fungus (yeast and/or mold) indicated in the sample. The water content is negligible. The amount and size of particulates present in the system are acceptable.

Fuel Condition

Sulfur value derived by ASTM D5453 method for ULSD validation. Sulfur level is acceptable for ULSD specification.

SAMPLE INFORMATION

method	limit/base	current	history1	history2
Sample Number	Client Info	WC0953959	---	---
Sample Date	Client Info	22 May 2024	---	---
Machine Age	hrs Client Info	0	---	---
Sample Status		NORMAL	---	---

PHYSICAL PROPERTIES

method	limit/base	current	history1	history2
Fuel Color	text *Visual Screen	Yellow	Red	---
ASTM Color	scalar *ASTM D1500		L4.5	---
Visc @ 40°C	cSt ASTM D445	3.0	2.43	---
Pensky-Martens Flash Point	°C *PMCC Calculated	52	60.7	---

SULFUR CONTENT

method	limit/base	current	history1	history2
Sulfur	ppm ASTM D5185m	10	0	---
Sulfur (UVF)	ppm ASTM D5453		9	---

DISTILLATION

method	limit/base	current	history1	history2
Initial Boiling Point	°C ASTM D86	165	171	---
5% Distillation Point	°C ASTM D86		193	---
10% Distill Point	°C ASTM D86	201	203	---
15% Distillation Point	°C ASTM D86		211	---
20% Distill Point	°C ASTM D86	216	219	---
30% Distill Point	°C ASTM D86	230	233	---
40% Distill Point	°C ASTM D86	243	247	---
50% Distill Point	°C ASTM D86	255	260	---
60% Distill Point	°C ASTM D86	267	274	---
70% Distill Point	°C ASTM D86	280	288	---
80% Distill Point	°C ASTM D86	295	304	---
85% Distillation Point	°C ASTM D86		315	---
90% Distill Point	°C ASTM D86	310	326	---
95% Distillation Point	°C ASTM D86		345	---
Final Boiling Point	°C ASTM D86	341	359	---

IGNITION QUALITY

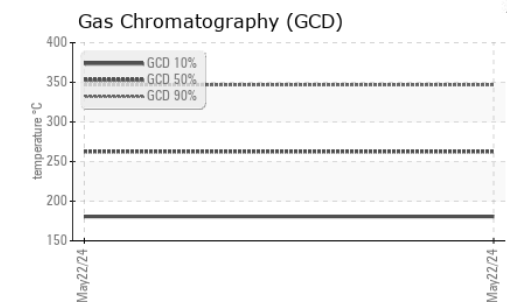
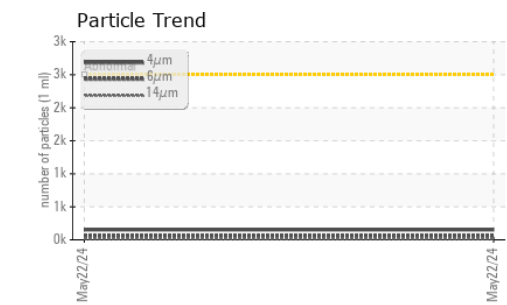
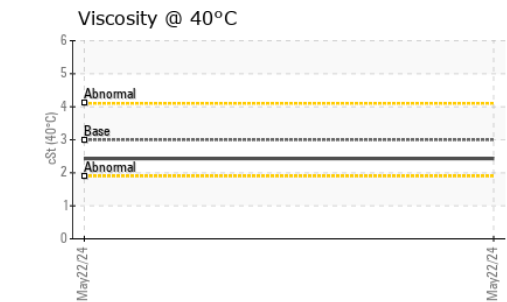
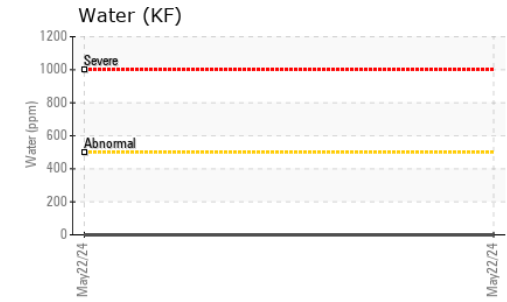
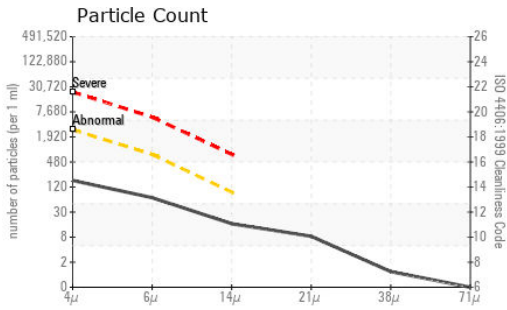
method	limit/base	current	history1	history2
API Gravity	ASTM D7777	37.7	36	---
Cetane Index	ASTM D4737	<40.0	48	---

CONTAMINANTS

method	limit/base	current	history1	history2
Silicon	ppm ASTM D5185m	<1.0	<1	---
Sodium	ppm ASTM D5185m	<0.1	1	---
Potassium	ppm ASTM D5185m	<0.1	2	---
Water	% ASTM D6304	<0.05	0.00	---
ppm Water	ppm ASTM D6304	<500	0	---
% Gasoline	% *In-House	<0.50	0.0	---
% Biodiesel	% *In-House	<20.0	0.0	---



FUEL REPORT

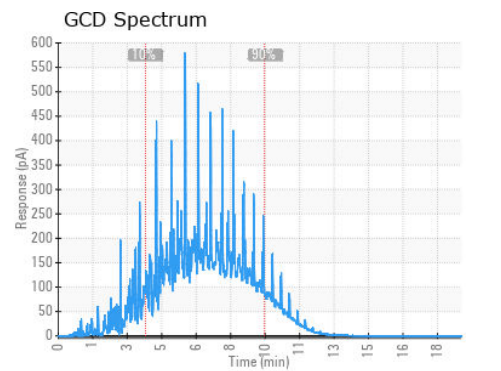
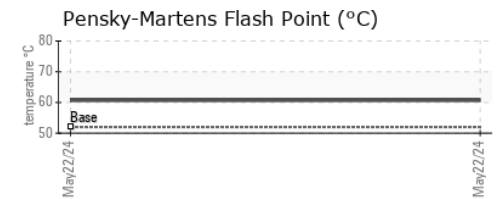
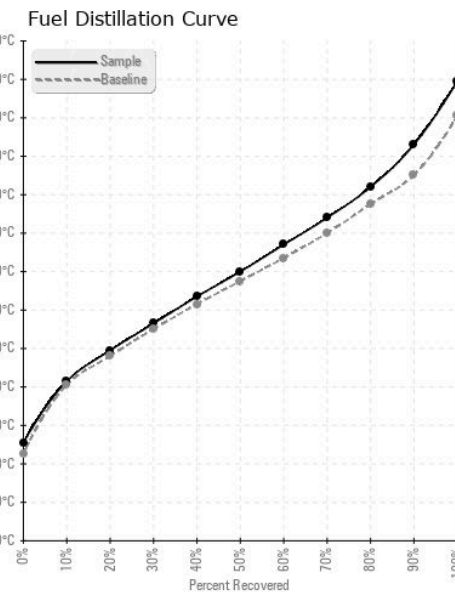


FLUID CLEANLINESS	method	limit/base	current	history1	history2
Particles >4µm	ASTM D7647	>2500	152	---	---
Particles >6µm	ASTM D7647	>640	59	---	---
Particles >14µm	ASTM D7647	>80	14	---	---
Particles >21µm	ASTM D7647	>20	7	---	---
Particles >38µm	ASTM D7647	>4	1	---	---
Particles >71µm	ASTM D7647	>3	0	---	---
Oil Cleanliness	ISO 4406 (c)	>18/16/13	14/13/11	---	---

HEAVY METALS	method	limit/base	current	history1	history2
Aluminum	ppm	ASTM D5185m <0.1	0	---	---
Nickel	ppm	ASTM D5185m <0.1	0	---	---
Lead	ppm	ASTM D5185m <0.1	<1	---	---
Vanadium	ppm	ASTM D5185m <0.1	0	---	---
Iron	ppm	ASTM D5185m <0.1	<1	---	---
Calcium	ppm	ASTM D5185m <0.1	0	---	---
Magnesium	ppm	ASTM D5185m <0.1	0	---	---
Phosphorus	ppm	ASTM D5185m <0.1	0	---	---
Zinc	ppm	ASTM D5185m <0.1	0	---	---

SAMPLE IMAGES	method	limit/base	current	history1	history2
Color				no image	no image
Bottom				no image	no image

GRAPHS



Certificate L2367

Laboratory : WearCheck USA - 501 Madison Ave., Cary, NC 27513
Sample No. : WC0953959
Lab Number : 06204093
Unique Number : 11071554
Test Package : DF-2 (Additional Tests: Fuel, Screen)

Received : 07 Jun 2024
Tested : 17 Jun 2024
Diagnosed : 17 Jun 2024 - Elizabeth Valachovic

PETROLEUM RECOVERY SERVICES
 210 POWELL DR
 SUMMERVILLE, SC
 US 29483
 Contact: AJAY EL
 Ajay@prsfuel.com
 T: (843)225-1777
 F:

To discuss this sample report, contact Customer Service at 1-800-237-1369.

* - Denotes test methods that are outside of the ISO 17025 scope of accreditation.

Statements of conformity to specifications are based on the simple acceptance decision rule (JCGM 106:2012)