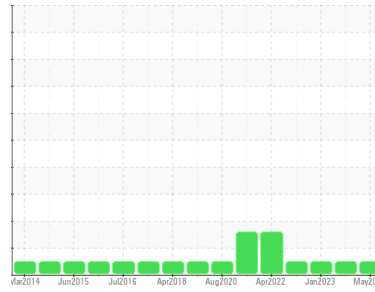




OIL ANALYSIS REPORT

Sample Rating Trend



NORMAL



Machine Id
MCQUAY BOA RM 1&2 - STNU070100100
 Component
Refrigeration Compressor
 Fluid
ICI EMKARATE RL 46H (16 GAL)

DIAGNOSIS

Recommendation

No corrective action is recommended at this time. Resample at the next service interval to monitor.

Wear

All component wear rates are normal.

Contamination

There is a trace of moisture present in the oil.

Fluid Condition

The AN level is acceptable for this fluid. The condition of the oil is suitable for further service.

SAMPLE INFORMATION

| | method | limit/base | current | history1 | history2 |
|---------------|-------------|-------------|--------------------|-------------|-------------|
| Sample Number | Client Info | | WC0812083 | WC0487424 | WC0430660 |
| Sample Date | Client Info | | 07 May 2024 | 01 Sep 2023 | 24 Jan 2023 |
| Machine Age | hrs | Client Info | 57190 | 800 | 0 |
| Oil Age | hrs | Client Info | 0 | 800 | 0 |
| Oil Changed | Client Info | | Changed | Changed | N/A |
| Sample Status | | | NORMAL | NORMAL | NORMAL |

WEAR METALS

| | method | limit/base | current | history1 | history2 |
|----------|--------|------------------|--------------|----------|----------|
| Iron | ppm | ASTM D5185m >100 | 3 | 0 | 0 |
| Chromium | ppm | ASTM D5185m >2 | 0 | 0 | 0 |
| Nickel | ppm | ASTM D5185m | 0 | 0 | 0 |
| Titanium | ppm | ASTM D5185m | <1 | 0 | 0 |
| Silver | ppm | ASTM D5185m >2 | 0 | 0 | 0 |
| Aluminum | ppm | ASTM D5185m >50 | 0 | 0 | 0 |
| Lead | ppm | ASTM D5185m >2 | 0 | 0 | 0 |
| Copper | ppm | ASTM D5185m >100 | <1 | 0 | <1 |
| Tin | ppm | ASTM D5185m >4 | <1 | 0 | 0 |
| Vanadium | ppm | ASTM D5185m | <1 | 0 | 0 |
| Cadmium | ppm | ASTM D5185m | 0 | 0 | 0 |

ADDITIVES

| | method | limit/base | current | history1 | history2 |
|------------|--------|------------------|--------------|----------|----------|
| Boron | ppm | ASTM D5185m 0 | 0 | 0 | 0 |
| Barium | ppm | ASTM D5185m 0 | 0 | 0 | 1 |
| Molybdenum | ppm | ASTM D5185m 0 | 0 | 0 | 0 |
| Manganese | ppm | ASTM D5185m 0 | <1 | <1 | 0 |
| Magnesium | ppm | ASTM D5185m 0 | 0 | <1 | 0 |
| Calcium | ppm | ASTM D5185m 0 | 0 | 0 | 0 |
| Phosphorus | ppm | ASTM D5185m 1900 | 0 | 1 | 100 |
| Zinc | ppm | ASTM D5185m 0 | 0 | 0 | 0 |
| Sulfur | ppm | ASTM D5185m 25 | 0 | 0 | 27 |

CONTAMINANTS

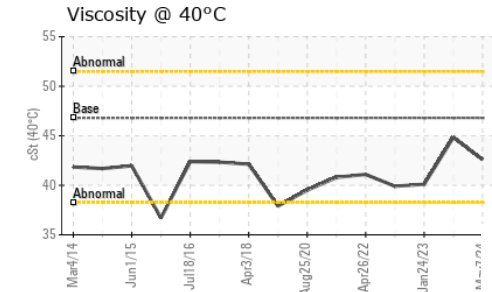
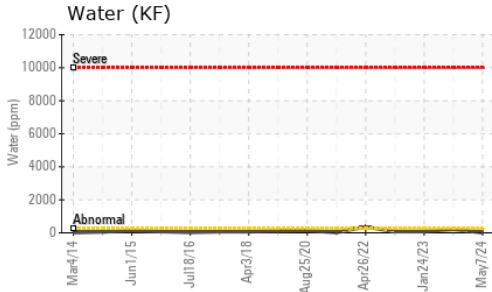
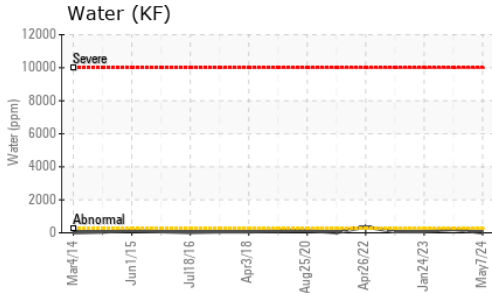
| | method | limit/base | current | history1 | history2 |
|-----------|--------|------------------|--------------|----------|----------|
| Silicon | ppm | ASTM D5185m >50 | 9 | 0 | 18 |
| Sodium | ppm | ASTM D5185m | 2 | 1 | 0 |
| Potassium | ppm | ASTM D5185m >20 | 0 | <1 | <1 |
| Water | % | ASTM D6304 >0.02 | 0.001 | 0.020 | 0.006 |
| ppm Water | ppm | ASTM D6304 >250 | 1 | 208.0 | 66.2 |

FLUID DEGRADATION

| | method | limit/base | current | history1 | history2 |
|------------------|----------|----------------|--------------|----------|----------|
| Acid Number (AN) | mg KOH/g | ASTM D974 0.03 | 0.014 | 0.014 | 0.015 |



OIL ANALYSIS REPORT



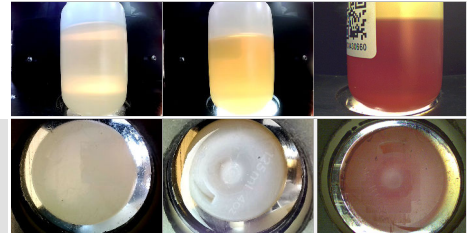
| VISUAL | method | limit/base | current | history1 | history2 |
|------------------|--------|------------|---------|----------|----------|
| White Metal | scalar | *Visual | NONE | NONE | NONE |
| Yellow Metal | scalar | *Visual | NONE | NONE | NONE |
| Precipitate | scalar | *Visual | NONE | NONE | NONE |
| Silt | scalar | *Visual | NONE | NONE | NONE |
| Debris | scalar | *Visual | NONE | NONE | NONE |
| Sand/Dirt | scalar | *Visual | NONE | NONE | NONE |
| Appearance | scalar | *Visual | NORML | NORML | NORML |
| Odor | scalar | *Visual | NORML | NORML | NORML |
| Emulsified Water | scalar | *Visual | >0.02 | NEG | NEG |
| Free Water | scalar | *Visual | | NEG | NEG |

| FLUID PROPERTIES | method | limit/base | current | history1 | history2 |
|------------------|--------|------------|---------|----------|----------|
| Visc @ 40°C | cSt | ASTM D445 | 46.8 | 44.84 | 40.1 |

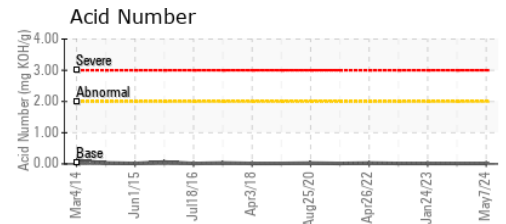
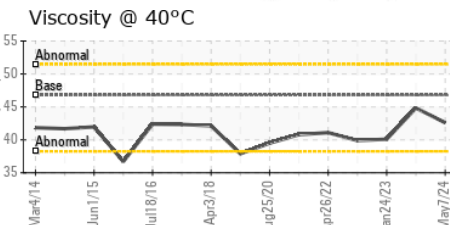
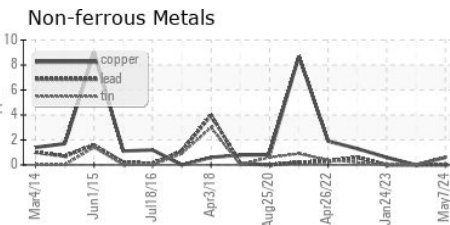
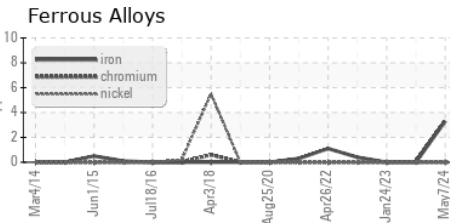
| SAMPLE IMAGES | method | limit/base | current | history1 | history2 |
|---------------|--------|------------|---------|----------|----------|
|---------------|--------|------------|---------|----------|----------|

Color

Bottom



GRAPHS



Certificate L2367

Laboratory : WearCheck USA - 501 Madison Ave., Cary, NC 27513

Sample No. : WC0812083

Lab Number : 06204772

Unique Number : 11072233

Test Package : IND 2

Received : 10 Jun 2024

Tested : 12 Jun 2024

Diagnosed : 12 Jun 2024 - Angela Borella

DAIKIN APPLIED-RICHMOND

8991 OLD STAPLES MILL ROAD

HENRICO, VA

US 23228

Contact: AMANDA CARRIER

amanda.carrier@daikinapplied.com

T: (804)747-4822

F: (804)747-6686

To discuss this sample report, contact Customer Service at 1-800-237-1369.

* - Denotes test methods that are outside of the ISO 17025 scope of accreditation.

Statements of conformity to specifications are based on the simple acceptance decision rule (JCGM 106:2012)