

Area

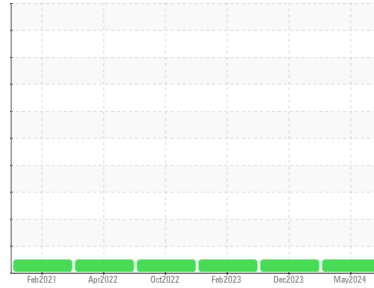
**NOT GIVEN**

Machine Id

**SULLIVAN PALATEK 1608250002 - BRITTEN**

Component

**Compressor**



**DIAGNOSIS**

**Recommendation**

Resample at the next service interval to monitor. Please specify the brand, type, and viscosity of the oil on your next sample.

**Wear**

All component wear rates are normal.

**Contamination**

There is no indication of any contamination in the oil.

**Fluid Condition**

The AN level is acceptable for this fluid. The condition of the oil is suitable for further service.

**SAMPLE INFORMATION** method limit/base current history1 history2

|               |             |                    |              |             |       |
|---------------|-------------|--------------------|--------------|-------------|-------|
| Sample Number | Client Info | <b>UCS06204799</b> | UCS06045011  | UCS05785726 |       |
| Sample Date   | Client Info | <b>06 May 2024</b> | 26 Dec 2023  | 16 Feb 2023 |       |
| Machine Age   | hrs         | Client Info        | <b>32547</b> | 0           | 26646 |
| Oil Age       | hrs         | Client Info        | <b>3527</b>  | 1405        | 3927  |
| Oil Changed   | Client Info | <b>Changed</b>     | Not Changd   | Changed     |       |
| Sample Status |             | <b>NORMAL</b>      | NORMAL       | NORMAL      |       |

**CONTAMINATION** method limit/base current history1 history2

|       |           |      |            |     |     |
|-------|-----------|------|------------|-----|-----|
| Water | WC Method | >0.1 | <b>NEG</b> | NEG | NEG |
|-------|-----------|------|------------|-----|-----|

**WEAR METALS** method limit/base current history1 history2

|          |     |             |     |              |    |    |
|----------|-----|-------------|-----|--------------|----|----|
| Iron     | ppm | ASTM D5185m | >50 | <b>0</b>     | 0  | <1 |
| Chromium | ppm | ASTM D5185m | >10 | <b>0</b>     | 0  | 0  |
| Nickel   | ppm | ASTM D5185m |     | <b>0</b>     | 0  | 0  |
| Titanium | ppm | ASTM D5185m |     | <b>&lt;1</b> | <1 | 0  |
| Silver   | ppm | ASTM D5185m |     | <b>0</b>     | <1 | 0  |
| Aluminum | ppm | ASTM D5185m | >25 | <b>0</b>     | 0  | 0  |
| Lead     | ppm | ASTM D5185m | >25 | <b>0</b>     | 0  | 0  |
| Copper   | ppm | ASTM D5185m | >50 | <b>&lt;1</b> | <1 | 0  |
| Tin      | ppm | ASTM D5185m | >15 | <b>0</b>     | <1 | 0  |
| Vanadium | ppm | ASTM D5185m |     | <b>&lt;1</b> | 0  | 0  |
| Cadmium  | ppm | ASTM D5185m |     | <b>0</b>     | 0  | 0  |

**ADDITIVES** method limit/base current history1 history2

|            |     |             |  |              |     |     |
|------------|-----|-------------|--|--------------|-----|-----|
| Boron      | ppm | ASTM D5185m |  | <b>0</b>     | 0   | 0   |
| Barium     | ppm | ASTM D5185m |  | <b>0</b>     | 0   | 0   |
| Molybdenum | ppm | ASTM D5185m |  | <b>0</b>     | 0   | 0   |
| Manganese  | ppm | ASTM D5185m |  | <b>&lt;1</b> | <1  | <1  |
| Magnesium  | ppm | ASTM D5185m |  | <b>0</b>     | 0   | 4   |
| Calcium    | ppm | ASTM D5185m |  | <b>0</b>     | 0   | 0   |
| Phosphorus | ppm | ASTM D5185m |  | <b>491</b>   | 507 | 467 |
| Zinc       | ppm | ASTM D5185m |  | <b>0</b>     | 0   | 0   |
| Sulfur     | ppm | ASTM D5185m |  | <b>614</b>   | 734 | 301 |

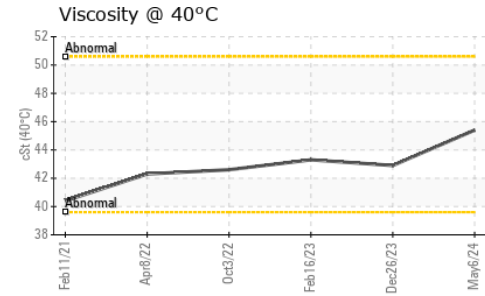
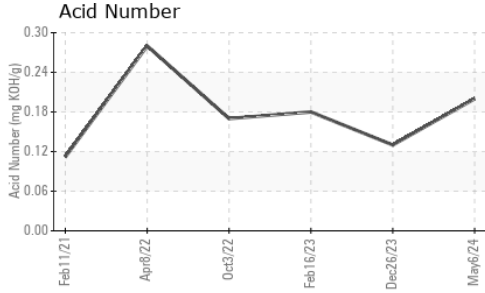
**CONTAMINANTS** method limit/base current history1 history2

|           |     |             |     |              |    |    |
|-----------|-----|-------------|-----|--------------|----|----|
| Silicon   | ppm | ASTM D5185m | >25 | <b>1</b>     | 1  | 2  |
| Sodium    | ppm | ASTM D5185m |     | <b>1</b>     | <1 | 0  |
| Potassium | ppm | ASTM D5185m | >20 | <b>&lt;1</b> | 0  | <1 |

**FLUID DEGRADATION** method limit/base current history1 history2

|                  |          |            |  |             |      |      |
|------------------|----------|------------|--|-------------|------|------|
| Acid Number (AN) | mg KOH/g | ASTM D8045 |  | <b>0.20</b> | 0.13 | 0.18 |
|------------------|----------|------------|--|-------------|------|------|

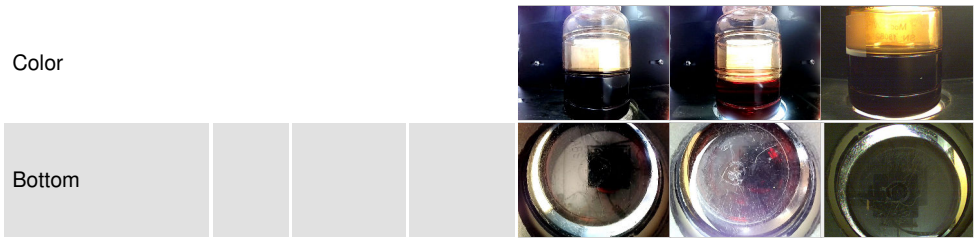
# OIL ANALYSIS REPORT



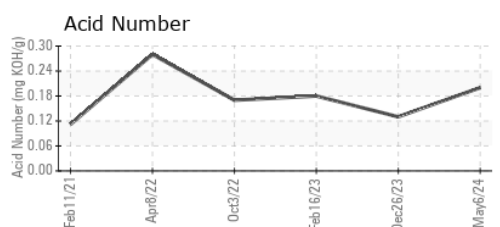
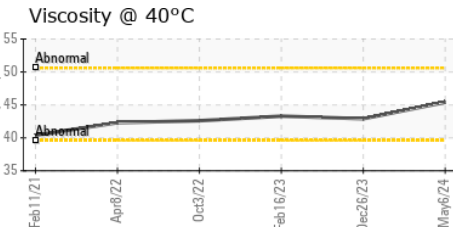
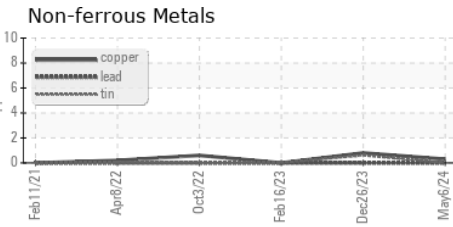
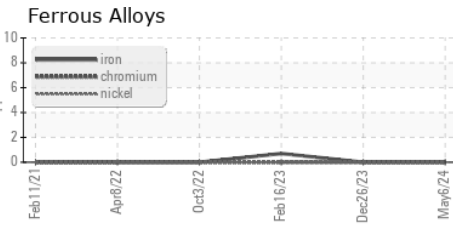
| PARAMETER        | method | limit/base | current | history1 | history2 |
|------------------|--------|------------|---------|----------|----------|
| White Metal      | scalar | *Visual    | NONE    | NONE     | NONE     |
| Yellow Metal     | scalar | *Visual    | NONE    | NONE     | NONE     |
| Precipitate      | scalar | *Visual    | NONE    | NONE     | NONE     |
| Silt             | scalar | *Visual    | NONE    | NONE     | NONE     |
| Debris           | scalar | *Visual    | NONE    | NONE     | VLITE    |
| Sand/Dirt        | scalar | *Visual    | NONE    | NONE     | NONE     |
| Appearance       | scalar | *Visual    | NORML   | NORML    | NORML    |
| Odor             | scalar | *Visual    | NORML   | NORML    | NORML    |
| Emulsified Water | scalar | *Visual    | >0.1    | NEG      | NEG      |
| Free Water       | scalar | *Visual    |         | NEG      | NEG      |

| FLUID PROPERTIES | method | limit/base | current | history1 | history2 |
|------------------|--------|------------|---------|----------|----------|
| Visc @ 40°C      | cSt    | ASTM D445  | 45.4    | 42.9     | 43.3     |

| SAMPLE IMAGES | method | limit/base | current | history1 | history2 |
|---------------|--------|------------|---------|----------|----------|
|---------------|--------|------------|---------|----------|----------|



## GRAPHS



**Laboratory** : WearCheck USA - 501 Madison Ave., Cary, NC 27513  
**Sample No.** : UCS06204799  
**Lab Number** : 06204799  
**Unique Number** : 11072260  
**Test Package** : IND 2

**Received** : 10 Jun 2024  
**Tested** : 11 Jun 2024  
**Diagnosed** : 11 Jun 2024 - Wes Davis

**AIRLEX**

TRAVERSE CITY, MI  
 US 49686  
 Contact: MIKE  
 office@airlex.com  
 T: (231)929-1601  
 F:

To discuss this sample report, contact Customer Service at 1-800-237-1369.

\* - Denotes test methods that are outside of the ISO 17025 scope of accreditation.

Statements of conformity to specifications are based on the simple acceptance decision rule (JCGM 106:2012)