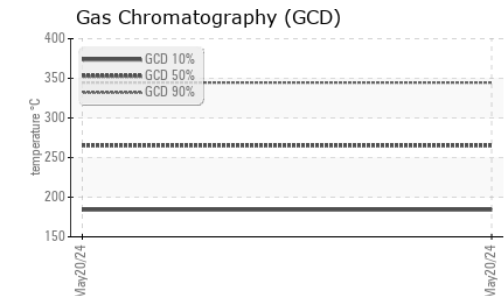
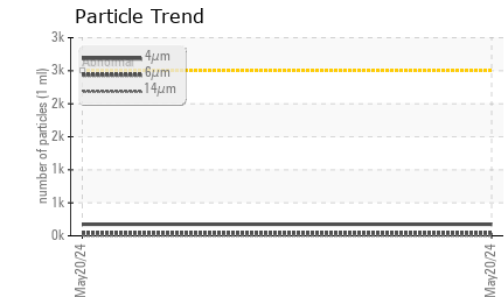
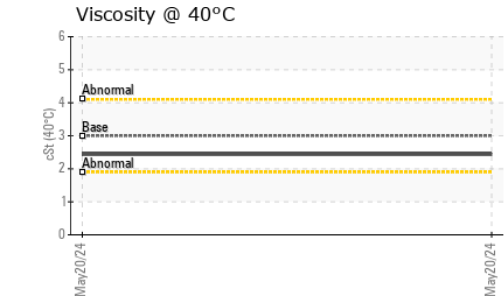
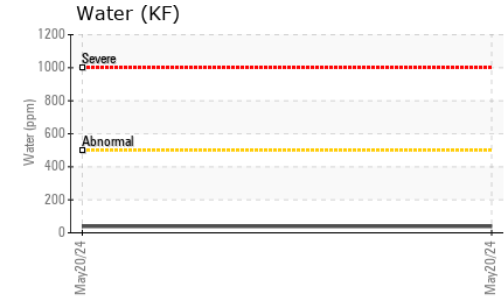
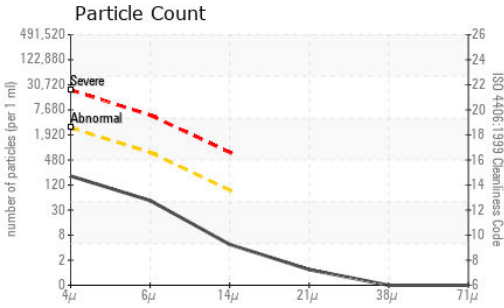




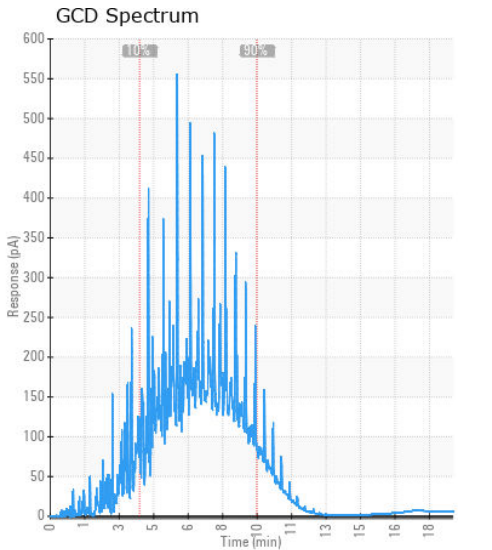
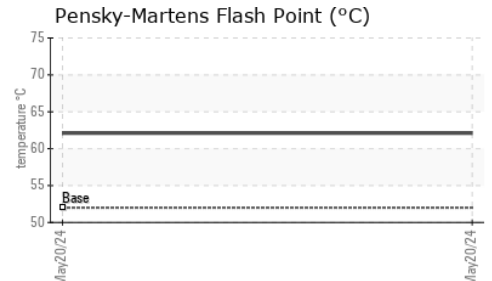
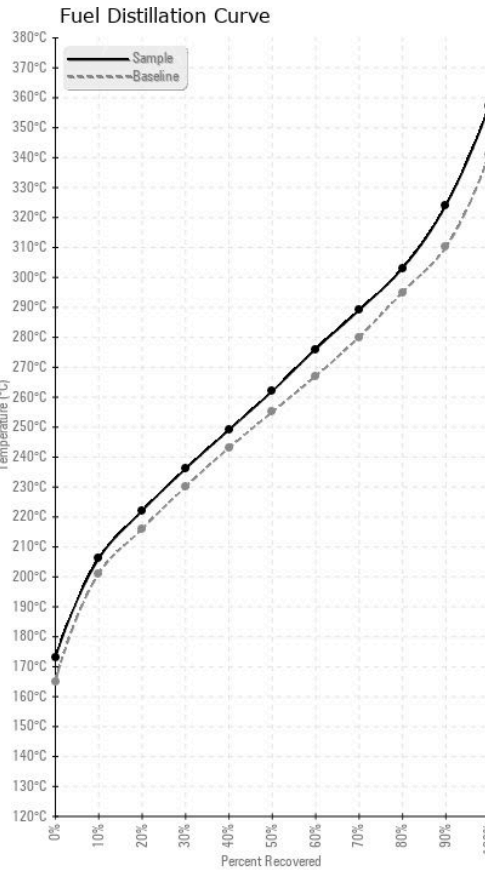
FUEL REPORT



HEAVY METALS	method	limit/base	current	history1	history2
Aluminum	ppm	ASTM D5185m	<0.1	0	---
Nickel	ppm	ASTM D5185m	<0.1	<1	---
Lead	ppm	ASTM D5185m	<0.1	0	---
Vanadium	ppm	ASTM D5185m	<0.1	0	---
Iron	ppm	ASTM D5185m	<0.1	0	---
Calcium	ppm	ASTM D5185m	<0.1	0	---
Magnesium	ppm	ASTM D5185m	<0.1	<1	---
Phosphorus	ppm	ASTM D5185m	<0.1	0	---
Zinc	ppm	ASTM D5185m	<0.1	0	---

SAMPLE IMAGES	method	limit/base	current	history1	history2
Color				no image	no image
Bottom				no image	no image

GRAPHS



Laboratory : WearCheck USA - 501 Madison Ave., Cary, NC 27513
Sample No. : WC0953850 **Received** : 10 Jun 2024
Lab Number : 06205278 **Tested** : 18 Jun 2024
Unique Number : 11072739 **Diagnosed** : 18 Jun 2024 - Elizabeth Valachovic
Test Package : DF-2 (Additional Tests: Fuel, Screen)

PETROLEUM RECOVERY SERVICES
 210 POWELL DR
 SUMMERVILLE, SC
 US 29483
 Contact: AJAY EL
 Ajay@prsfuel.com
 T: (843)225-1777
 F:

To discuss this sample report, contact Customer Service at 1-800-237-1369.
 * - Denotes test methods that are outside of the ISO 17025 scope of accreditation.
 Statements of conformity to specifications are based on the simple acceptance decision rule (JCGM 106:2012)