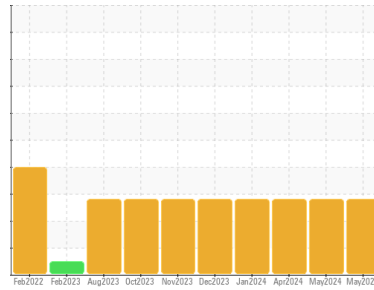




COOLANT REPORT

Sample Rating Trend



OFF SPEC



Area

Louisville

Machine Id

[Louisville] Coolant - Port Genset

Component

Coolant

Fluid

CATERPILLAR ELC (--- GAL)

DIAGNOSIS

▲ Recommendation

We recommend that you perform a partial drain and top off with straight antifreeze to increase level of glycol.

Corrosion

All metal levels are normal indicating no corrosion in the cooling system.

Contaminants

There is no indication of any contamination in the coolant.

▲ Coolant Condition

The glycol level is lower than acceptable. The nitrite level is acceptable. The pH level of this fluid is within the acceptable limits.

SAMPLE INFORMATION

	method	limit/base	current	history1	history2
Sample Number	Client Info		WC0898526	WC0874749	WC0874764
Sample Date	Client Info		29 May 2024	20 May 2024	28 Apr 2024
Machine Age	hrs	Client Info	2286	2120	1850
Oil Age	hrs	Client Info	0	0	0
Oil Changed	Client Info		N/A	N/A	N/A
Sample Status			ABNORMAL	ABNORMAL	ABNORMAL

PHYSICAL TEST RESULTS

	method	limit/base	current	history1	history2
Glycol Type	FT-IR		---	---	---
Specific Gravity	*ASTM D1298		1.030	1.031	1.031
pH	Scale 0-14	ASTM D1287	8.09	7.99	7.37
Nitrites	ppm	AP-053:2009	448	524	712
Reserve Alkalinity	Scale 0-20	*ASTM D1121	---	---	---
Percentage Glycol	%	ASTM D3321	▲ 23.1	▲ 23.8	▲ 23.6
Freezing Point	°F	ASTM D3321	12	12	12
Total Dissolved Solids			158.0	192.5	165.0
Carboxylate			fail	fail	fail

CORROSION INHIBITORS

	method	limit/base	current	history1	history2	
Silicon	ppm	ASTM D6130	0	8	6	7
Phosphorus	ppm	ASTM D6130	0	0	<1	0
Boron	ppm	ASTM D6130	0	34	25	28
Molybdenum	ppm	ASTM D6130	950	209	89	226

CORROSION

	method	limit/base	current	history1	history2	
Iron	ppm	ASTM D6130	>15	7	0	<1
Aluminum	ppm	ASTM D6130	>10	<1	0	0
Copper	ppm	ASTM D6130	>10	<1	1	<1
Lead	ppm	ASTM D6130	>10	0	0	0
Tin	ppm	ASTM D6130	>10	0	0	0
Zinc	ppm	ASTM D6130		0	0	0

CONTAMINANTS

	method	limit/base	current	history1	history2	
Chlorine	ppm	ASTM D6130		67	31	58

CARRIER SALTS

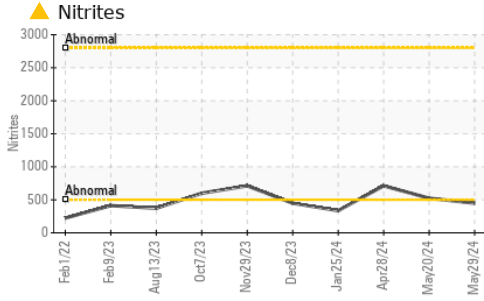
	method	limit/base	current	history1	history2	
Sodium	ppm	ASTM D6130		2577	1176	2695
Potassium	ppm	ASTM D6130		14	12	13

SCALE POTENTIAL

	method	limit/base	current	history1	history2	
Calcium	ppm	ASTM D6130		17	5	18
Magnesium	ppm	ASTM D6130		10	5	10

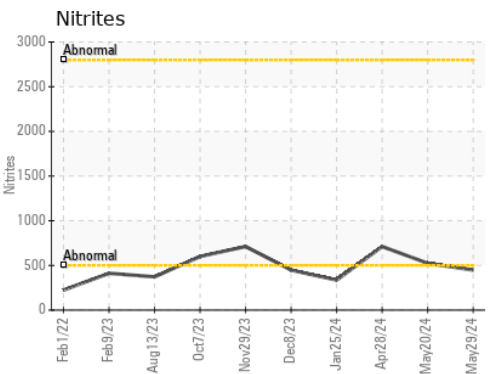
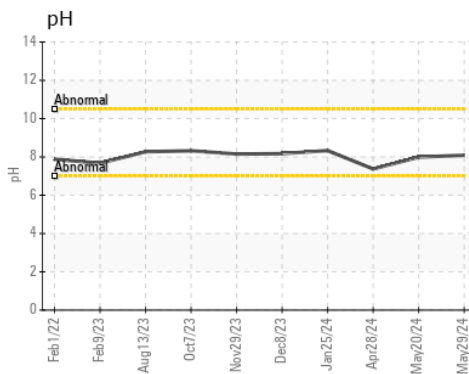
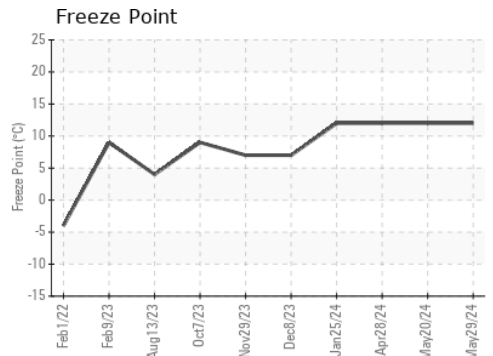
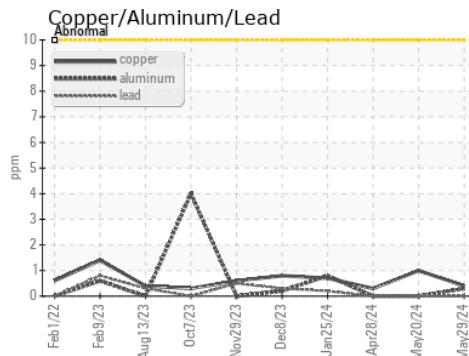
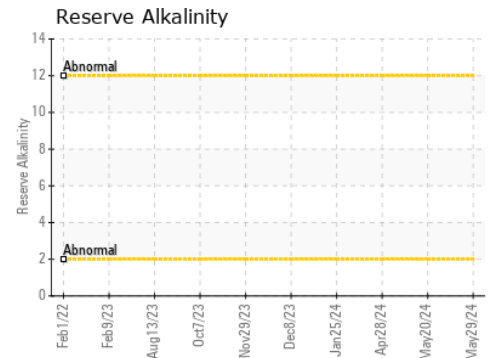
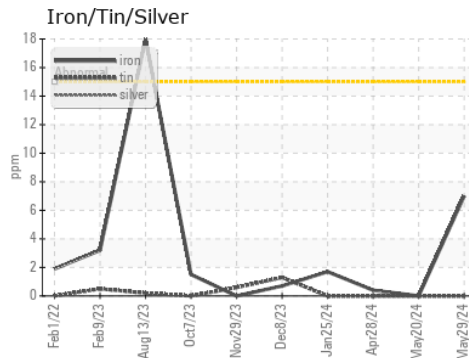


COOLANT REPORT



VISUAL	method	limit/base	current	history1	history2
Coolant Color	*Visual		Red	Orange	Red
Coolant Appearance	*Visual	Clear	normal	normal	normal
Color					
Bottom					

GRAPHS



Certificate L2367

Laboratory : WearCheck USA - 501 Madison Ave., Cary, NC 27513
Sample No. : WC0898526 **Received** : 10 Jun 2024
Lab Number : 06205300 **Tested** : 18 Jun 2024
Unique Number : 11072761 **Diagnosed** : 18 Jun 2024 - Doug Bogart
Test Package : COOL- (Additional Tests: GlycolType, ICP, KF)

MARATHON PETROLEUM CO.
 101 12TH ST
 CATLETTSBURG, KY
 US 41169
 Contact: CORY GUMBERT
 cagumbert@marathonpetroleum.com
 T: (606)585-3950
 F: x:

To discuss this sample report, contact Customer Service at 1-800-237-1369.

* - Denotes test methods that are outside of the ISO 17025 scope of accreditation.

Statements of conformity to specifications are based on the simple acceptance decision rule (JCGM 106:2012)