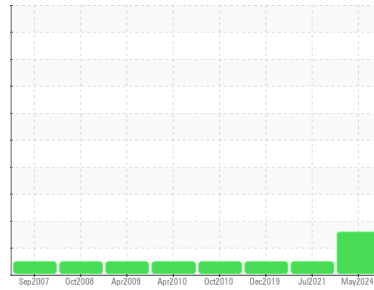




OIL ANALYSIS REPORT

Sample Rating Trend



ISO



Machine Id
KAESER SM-11 1388291 (S/N 1108)
 Component
Compressor
 Fluid
KAESER SIGMA (OEM) S-460 (--- QTS)

DIAGNOSIS

Recommendation

No corrective action is recommended at this time. The filter change at the time of sampling has been noted. Resample at the next service interval to monitor.

Wear

All component wear rates are normal.

Contamination

There is a moderate amount of particulates present in the oil.

Fluid Condition

The AN level is acceptable for this fluid. The condition of the oil is suitable for further service.

SAMPLE INFORMATION		method	limit/base	current	history1	history2
Sample Number	Client Info			KCPA018774	KCP33303	KCP20673
Sample Date	Client Info			31 May 2024	28 Jul 2021	02 Dec 2019
Machine Age	hrs	Client Info		58267	57525	56826
Oil Age	hrs	Client Info		0	657	0
Oil Changed	Client Info			Not Chngd	Changed	Changed
Sample Status				ATTENTION	NORMAL	NORMAL

WEAR METALS		method	limit/base	current	history1	history2
Iron	ppm	ASTM D5185m	>50	1	<1	2
Chromium	ppm	ASTM D5185m	>10	0	0	<1
Nickel	ppm	ASTM D5185m	>3	0	0	<1
Titanium	ppm	ASTM D5185m	>3	0	0	0
Silver	ppm	ASTM D5185m	>2	0	0	0
Aluminum	ppm	ASTM D5185m	>10	0	0	0
Lead	ppm	ASTM D5185m	>10	0	0	2
Copper	ppm	ASTM D5185m	>50	3	1	2
Tin	ppm	ASTM D5185m	>10	0	0	2
Antimony	ppm	ASTM D5185m		---	0	5
Vanadium	ppm	ASTM D5185m		<1	0	0
Cadmium	ppm	ASTM D5185m		0	0	0

ADDITIVES		method	limit/base	current	history1	history2
Boron	ppm	ASTM D5185m		0	0	0
Barium	ppm	ASTM D5185m	90	0	0	0
Molybdenum	ppm	ASTM D5185m		0	0	0
Manganese	ppm	ASTM D5185m		<1	0	2
Magnesium	ppm	ASTM D5185m	90	40	57	52
Calcium	ppm	ASTM D5185m	2	0	0	<1
Phosphorus	ppm	ASTM D5185m		0	0	<1
Zinc	ppm	ASTM D5185m		1	0	6
Sulfur	ppm	ASTM D5185m		20978	17126	3743

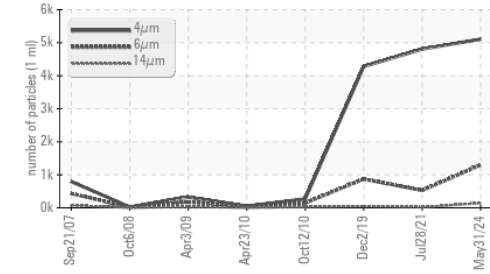
CONTAMINANTS		method	limit/base	current	history1	history2
Silicon	ppm	ASTM D5185m	>25	<1	0	1
Sodium	ppm	ASTM D5185m		11	11	11
Potassium	ppm	ASTM D5185m	>20	<1	0	2
Water	%	ASTM D6304	>0.05	0.016	0.024	0.014
ppm Water	ppm	ASTM D6304	>500	169	247.3	147.3

FLUID CLEANLINESS		method	limit/base	current	history1	history2
Particles >4µm		ASTM D7647		5108	4806	4279
Particles >6µm		ASTM D7647	>1300	1301	527	872
Particles >14µm		ASTM D7647	>80	146	17	48
Particles >21µm		ASTM D7647	>20	43	4	12
Particles >38µm		ASTM D7647	>4	2	0	0
Particles >71µm		ASTM D7647	>3	0	0	0
Oil Cleanliness		ISO 4406 (c)	>--/17/13	20/18/14	16/11	17/13

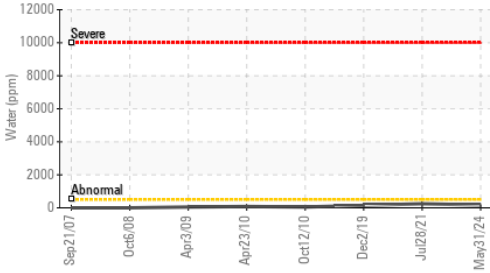
FLUID DEGRADATION		method	limit/base	current	history1	history2
Acid Number (AN)	mg KOH/g	ASTM D8045	0.4	0.32	0.348	0.333

OIL ANALYSIS REPORT

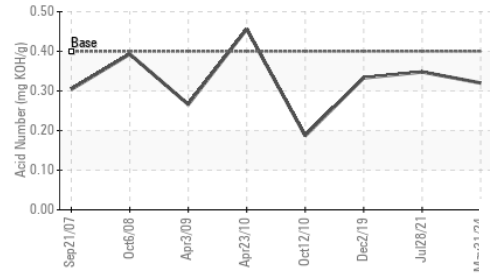
Particle Trend



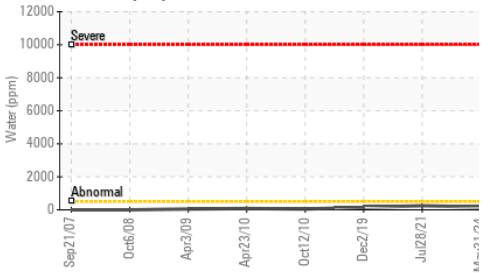
Water (KF)



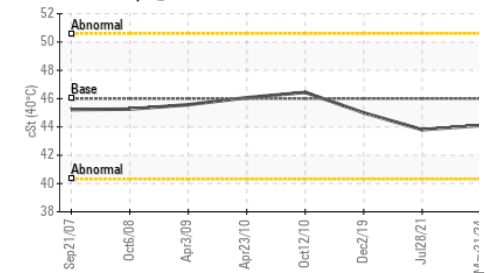
Acid Number



Water (KF)



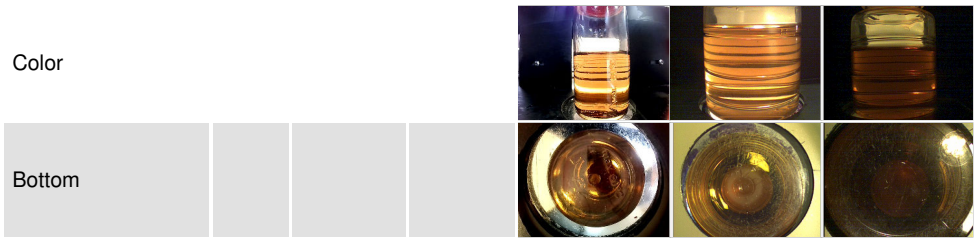
Viscosity @ 40°C



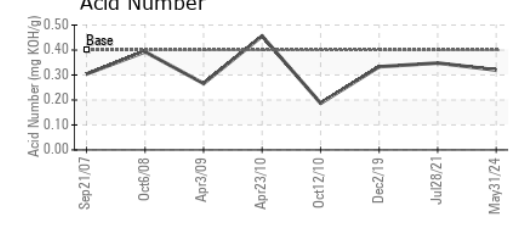
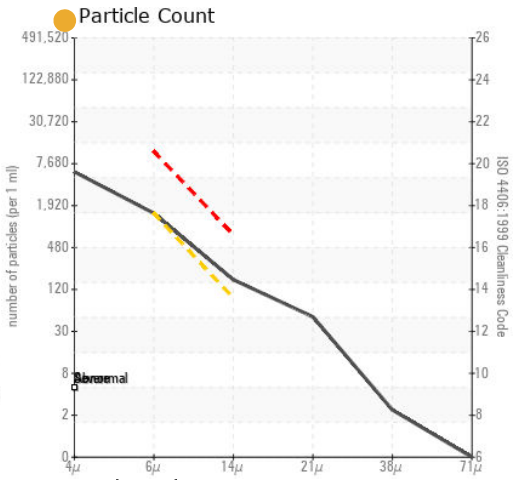
VISUAL	method	limit/base	current	history1	history2
White Metal	scalar	*Visual	NONE	NONE	NONE
Yellow Metal	scalar	*Visual	NONE	NONE	NONE
Precipitate	scalar	*Visual	NONE	NONE	NONE
Silt	scalar	*Visual	NONE	NONE	NONE
Debris	scalar	*Visual	NONE	NONE	NONE
Sand/Dirt	scalar	*Visual	NONE	NONE	NONE
Appearance	scalar	*Visual	NORML	NORML	NORML
Odor	scalar	*Visual	NORML	NORML	NORML
Emulsified Water	scalar	*Visual	>0.05	NEG	NEG
Free Water	scalar	*Visual		NEG	NEG

FLUID PROPERTIES	method	limit/base	current	history1	history2
Visc @ 40°C	cSt	ASTM D445	46	44.1	43.8

SAMPLE IMAGES	method	limit/base	current	history1	history2
---------------	--------	------------	---------	----------	----------



GRAPHS



Laboratory : WearCheck USA - 501 Madison Ave., Cary, NC 27513
Sample No. : KCPA018774
Lab Number : 06205441
Unique Number : 11072902
Test Package : IND 2 (Additional Tests: KF, PrtCount)
Received : 10 Jun 2024
Tested : 12 Jun 2024
Diagnosed : 13 Jun 2024 - Don Baldrige

BCS MACHINE CO., INC.
 1393 PROGRESS WAY SUITE #903
 ELDERSBURG, MD
 US 21784
 Contact: SERVICE MANAGER

To discuss this sample report, contact Customer Service at 1-800-237-1369.

* - Denotes test methods that are outside of the ISO 17025 scope of accreditation.

Statements of conformity to specifications are based on the simple acceptance decision rule (JCGM 106:2012)

T:
F: