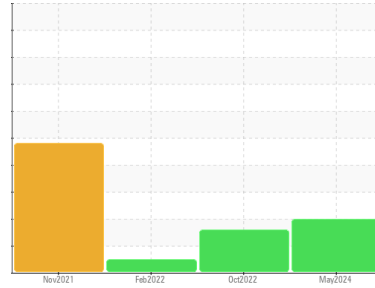


Area
Machine Id
Component

SMART OIL 6000 [32050R]
HERTZ VD004312 - MRS-CMC
Compressor



DIAGNOSIS

Recommendation

We advise that you follow the water drain-off procedure for this component. The filter change at the time of sampling has been noted. We recommend an early resample to monitor this condition.

Wear

All component wear rates are normal.

Contamination

Excessive free water present. Moderate concentration of visible dirt/debris present in the oil.

Fluid Condition

The AN level is acceptable for this fluid. The condition of the oil is acceptable for the time in service.

SAMPLE INFORMATION

	method	limit/base	current	history1	history2
Sample Number	Client Info		UHK06205596	UHK05693445	UCH05483952
Sample Date	Client Info		21 May 2024	31 Oct 2022	23 Feb 2022
Machine Age	hrs	Client Info	5739	2353	1034
Oil Age	hrs	Client Info	1245	1319	1034
Oil Changed	Client Info		Not Changed	Changed	Changed
Sample Status			ABNORMAL	ABNORMAL	NORMAL

WEAR METALS

	method	limit/base	current	history1	history2
Iron	ppm	ASTM D5185m >50	0	16	1
Chromium	ppm	ASTM D5185m >10	0	0	0
Nickel	ppm	ASTM D5185m	0	<1	8
Titanium	ppm	ASTM D5185m	0	0	0
Silver	ppm	ASTM D5185m	0	<1	<1
Aluminum	ppm	ASTM D5185m >25	0	0	<1
Lead	ppm	ASTM D5185m >25	0	0	0
Copper	ppm	ASTM D5185m >50	2	3	1
Tin	ppm	ASTM D5185m >15	<1	2	<1
Antimony	ppm	ASTM D5185m	---	---	0
Vanadium	ppm	ASTM D5185m	0	0	0
Cadmium	ppm	ASTM D5185m	0	0	0

ADDITIVES

	method	limit/base	current	history1	history2
Boron	ppm	ASTM D5185m	0	0	0
Barium	ppm	ASTM D5185m	<1	0	3
Molybdenum	ppm	ASTM D5185m	0	0	0
Manganese	ppm	ASTM D5185m	<1	0	<1
Magnesium	ppm	ASTM D5185m	2	0	10
Calcium	ppm	ASTM D5185m 20	2	0	<1
Phosphorus	ppm	ASTM D5185m	379	426	31
Zinc	ppm	ASTM D5185m	5	<1	26
Sulfur	ppm	ASTM D5185m	1189	1174	130

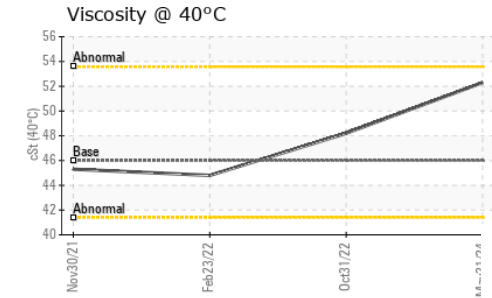
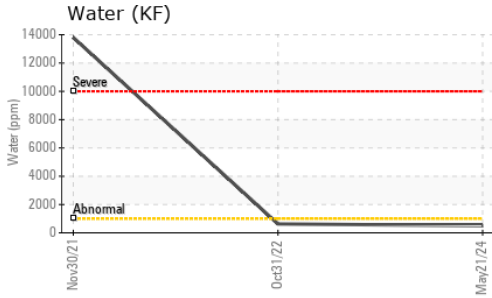
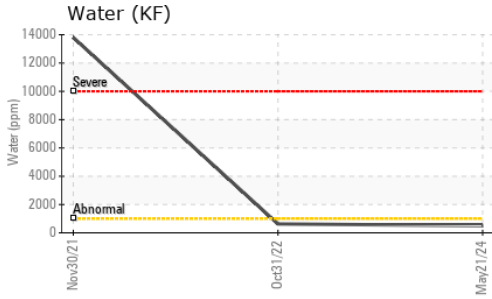
CONTAMINANTS

	method	limit/base	current	history1	history2
Silicon	ppm	ASTM D5185m >25	2	6	11
Sodium	ppm	ASTM D5185m	1	0	1
Potassium	ppm	ASTM D5185m >20	2	0	<1
Water	%	ASTM D6304 >0.1	0.050	0.063	---
ppm Water	ppm	ASTM D6304 >1000	500	630	---

FLUID DEGRADATION

	method	limit/base	current	history1	history2
Acid Number (AN)	mg KOH/g	ASTM D8045	0.08	0.11	0.135

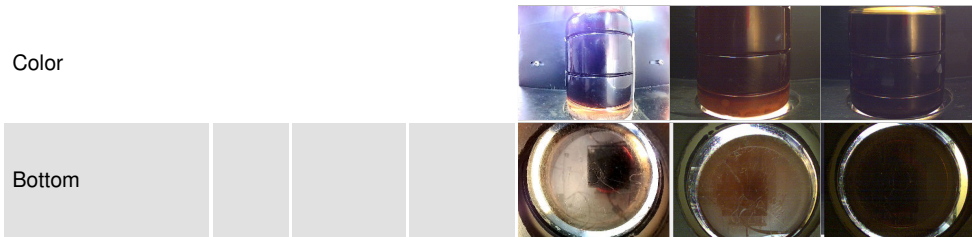
OIL ANALYSIS REPORT



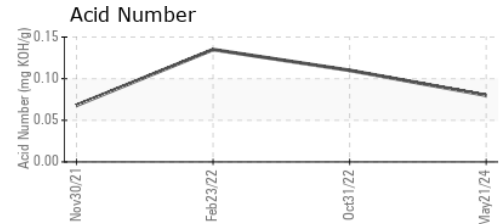
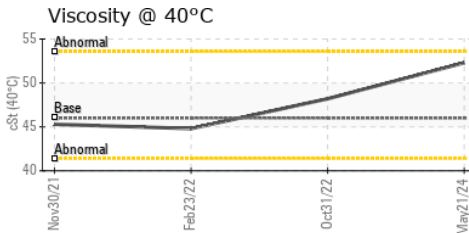
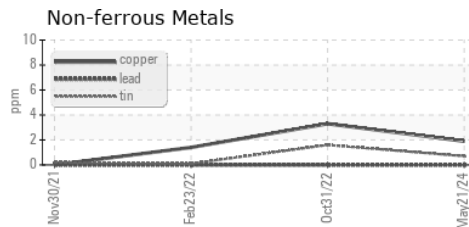
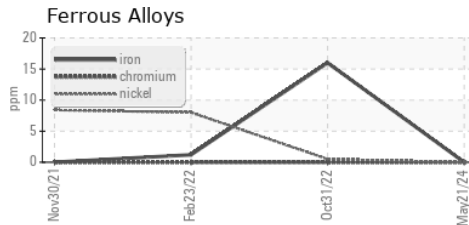
VISUAL	method	limit/base	current	history1	history2
White Metal	scalar	*Visual	NONE	NONE	NONE
Yellow Metal	scalar	*Visual	NONE	NONE	NONE
Precipitate	scalar	*Visual	NONE	NONE	NONE
Silt	scalar	*Visual	NONE	NONE	NONE
Debris	scalar	*Visual	NONE	▲ MODER	LIGHT
Sand/Dirt	scalar	*Visual	NONE	NONE	NONE
Appearance	scalar	*Visual	NORML	NORML	NORML
Odor	scalar	*Visual	NORML	NORML	NORML
Emulsified Water	scalar	*Visual	>0.1	0.2%	0.2%
Free Water	scalar	*Visual		▲ >10%	▲ 1.0

FLUID PROPERTIES	method	limit/base	current	history1	history2
Visc @ 40°C	cSt	ASTM D445 46	52.3	48.2	44.8

SAMPLE IMAGES



GRAPHS



Certificate L2367

Laboratory : WearCheck USA - 501 Madison Ave., Cary, NC 27513
Sample No. : UHK06205596 **Received** : 10 Jun 2024
Lab Number : **06205596** **Tested** : 13 Jun 2024
Unique Number : 11073057 **Diagnosed** : 13 Jun 2024 - Angela Borella
Test Package : IND 2 (Additional Tests: KF)

To discuss this sample report, contact Customer Service at 1-800-237-1369.

* - Denotes test methods that are outside of the ISO 17025 scope of accreditation.

Statements of conformity to specifications are based on the simple acceptance decision rule (JCGM 106:2012)

BACS INC

SUMMERVILLE, SC
US 29486

Contact: AARON LEE
alee@bacsinc.com

T: (843)821-3487

F: (843)821-3392