



FUEL REPORT

Sample Rating Trend



NORMAL



Machine Id
KIOTI CK3520SE 5656 (S/N PA4DA0344)
 Component
Diesel Fuel
 Fluid
No.2 DIESEL FUEL (ULTRALOW SULPHUR) (--- GAL)

DIAGNOSIS

Recommendation

All laboratory tests indicate that this sample meets specifications for No.2 ultra-low-sulfur diesel fuel.

Corrosion

All metal levels are normal indicating no corrosion in the system.

Contaminants

The water content is negligible. The amount and size of particulates present in the system are acceptable.

Fuel Condition

Sulfur value derived by ASTM D5453 method for ULSD validation. Sulfur level is acceptable for ULSD specification.

SAMPLE INFORMATION		method	limit/base	current	history1	history2
Sample Number	Client Info			KT0001562	---	---
Sample Date	Client Info			04 Jun 2024	---	---
Machine Age	hrs	Client Info		88	---	---
Sample Status				NORMAL	---	---

PHYSICAL PROPERTIES		method	limit/base	current	history1	history2
Fuel Color	text	*Visual Screen	Yellow	Yellow	---	---
ASTM Color	scalar	*ASTM D1500		L3.0	---	---
Visc @ 40°C	cSt	ASTM D445	3.0	2.63	---	---
Pensky-Martens Flash Point	°C	*PMCC Calculated	52	59.5	---	---

SULFUR CONTENT		method	limit/base	current	history1	history2
Sulfur	ppm	ASTM D5185m	10	0	---	---
Sulfur (UVF)	ppm	ASTM D5453		10	---	---

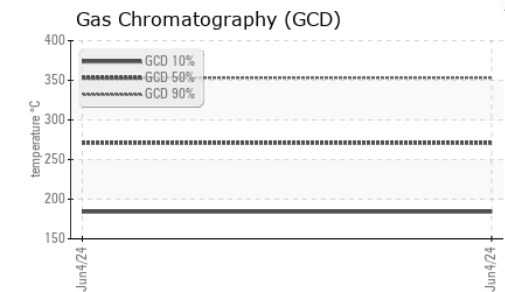
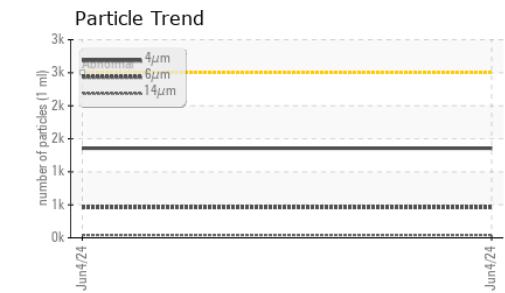
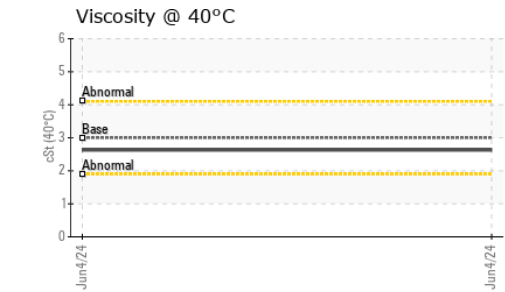
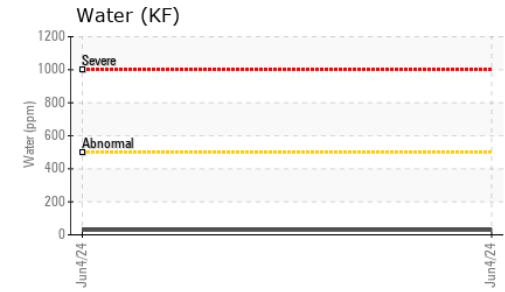
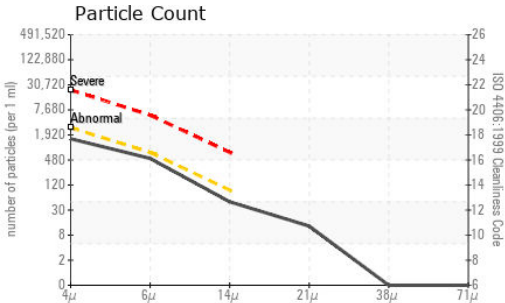
DISTILLATION		method	limit/base	current	history1	history2
Initial Boiling Point	°C	ASTM D86	165	171	---	---
5% Distillation Point	°C	ASTM D86		196	---	---
10% Distill Point	°C	ASTM D86	201	208	---	---
15% Distillation Point	°C	ASTM D86		217	---	---
20% Distill Point	°C	ASTM D86	216	225	---	---
30% Distill Point	°C	ASTM D86	230	241	---	---
40% Distill Point	°C	ASTM D86	243	254	---	---
50% Distill Point	°C	ASTM D86	255	267	---	---
60% Distill Point	°C	ASTM D86	267	281	---	---
70% Distill Point	°C	ASTM D86	280	295	---	---
80% Distill Point	°C	ASTM D86	295	310	---	---
85% Distillation Point	°C	ASTM D86		321	---	---
90% Distill Point	°C	ASTM D86	310	332	---	---
95% Distillation Point	°C	ASTM D86		349	---	---
Final Boiling Point	°C	ASTM D86	341	363	---	---

IGNITION QUALITY		method	limit/base	current	history1	history2
API Gravity		ASTM D7777	37.7	39	---	---
Cetane Index		ASTM D4737	<40.0	55	---	---

CONTAMINANTS		method	limit/base	current	history1	history2
Silicon	ppm	ASTM D5185m	<1.0	0	---	---
Sodium	ppm	ASTM D5185m	<0.1	1	---	---
Potassium	ppm	ASTM D5185m	<0.1	1	---	---
Water	%	ASTM D6304	<0.05	0.003	---	---
ppm Water	ppm	ASTM D6304	<500	29	---	---
% Gasoline	%	*In-House	<0.50	0.0	---	---
% Biodiesel	%	*In-House	<20.0	0.0	---	---

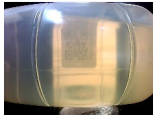
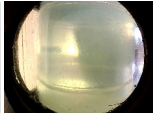


FUEL REPORT

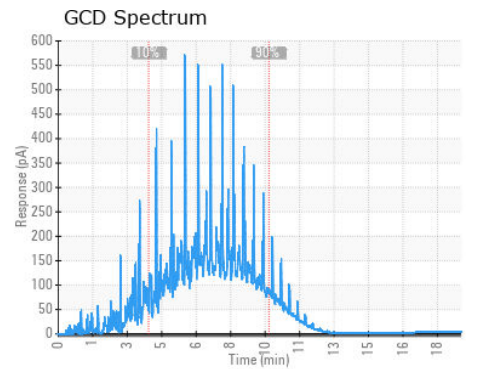
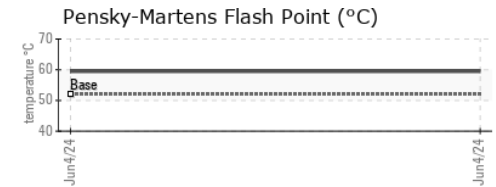
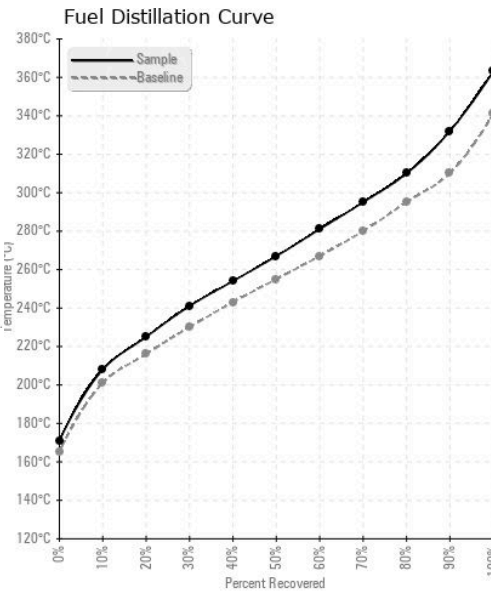


FLUID CLEANLINESS	method	limit/base	current	history1	history2
Particles >4µm	ASTM D7647	>2500	1356	---	---
Particles >6µm	ASTM D7647	>640	460	---	---
Particles >14µm	ASTM D7647	>80	42	---	---
Particles >21µm	ASTM D7647	>20	11	---	---
Particles >38µm	ASTM D7647	>4	0	---	---
Particles >71µm	ASTM D7647	>3	0	---	---
Oil Cleanliness	ISO 4406 (c)	>18/16/13	18/16/13	---	---

HEAVY METALS	method	limit/base	current	history1	history2
Aluminum	ppm	ASTM D5185m <0.1	0	---	---
Nickel	ppm	ASTM D5185m <0.1	<1	---	---
Lead	ppm	ASTM D5185m <0.1	0	---	---
Vanadium	ppm	ASTM D5185m <0.1	0	---	---
Iron	ppm	ASTM D5185m <0.1	0	---	---
Calcium	ppm	ASTM D5185m <0.1	0	---	---
Magnesium	ppm	ASTM D5185m <0.1	1	---	---
Phosphorus	ppm	ASTM D5185m <0.1	<1	---	---
Zinc	ppm	ASTM D5185m <0.1	0	---	---

SAMPLE IMAGES	method	limit/base	current	history1	history2
Color				no image	no image
Bottom				no image	no image

GRAPHS



Certificate L2367

Laboratory : WearCheck USA - 501 Madison Ave., Cary, NC 27513
Sample No. : KT0001562
Lab Number : 06206045
Unique Number : 11073506
Test Package : DF-2 (Additional Tests: Fuel, Screen)

SOUTHERN STAR TRACTOR
 3456 S BURLESON BLVD
 ALVARADO, TX
 US 76009

To discuss this sample report, contact Customer Service at 1-800-237-1369.

Contact: GEORGE
 GEORGE@SOUTHERNSTARTRACTOR.COM

* - Denotes test methods that are outside of the ISO 17025 scope of accreditation.

Statements of conformity to specifications are based on the simple acceptance decision rule (JCGM 106:2012)

T:
 F: