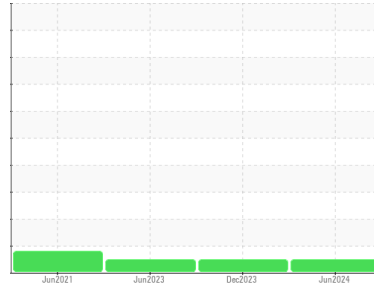




OIL ANALYSIS REPORT

Sample Rating Trend



NORMAL



Area
DF8 PLUS [10167]
 Machine Id
KAESER 1384 - MAGENTA LLC
 Component
Compressor

DIAGNOSIS

Recommendation

Oil and filter change at the time of sampling has been noted. Resample at the next service interval to monitor.

Wear

All component wear rates are normal.

Contamination

There is a light concentration of water present in the oil.

Fluid Condition

The AN level is acceptable for this fluid. The condition of the oil is suitable for further service.

SAMPLE INFORMATION

	method	limit/base	current	history1	history2
Sample Number	Client Info		UDI0000358	UCH06048988	UCH05885711
Sample Date	Client Info		06 Jun 2024	20 Dec 2023	13 Jun 2023
Machine Age	hrs	Client Info	62825	60341	56978
Oil Age	hrs	Client Info	2484	3363	4438
Oil Changed		Client Info	Changed	Changed	Changed
Sample Status			NORMAL	NORMAL	NORMAL

WEAR METALS

	method	limit/base	current	history1	history2
Iron	ppm	ASTM D5185m >50	0	0	2
Chromium	ppm	ASTM D5185m >10	<1	0	2
Nickel	ppm	ASTM D5185m >3	0	0	2
Titanium	ppm	ASTM D5185m >3	<1	0	2
Silver	ppm	ASTM D5185m >2	0	0	1
Aluminum	ppm	ASTM D5185m >10	2	<1	5
Lead	ppm	ASTM D5185m >10	0	0	5
Copper	ppm	ASTM D5185m >50	2	2	4
Tin	ppm	ASTM D5185m >10	<1	<1	2
Antimony	ppm	ASTM D5185m	---	---	---
Vanadium	ppm	ASTM D5185m	0	0	1
Cadmium	ppm	ASTM D5185m	<1	0	2

ADDITIVES

	method	limit/base	current	history1	history2
Boron	ppm	ASTM D5185m 1	0	0	0
Barium	ppm	ASTM D5185m 0.3	0	0	9
Molybdenum	ppm	ASTM D5185m 0	0	0	2
Manganese	ppm	ASTM D5185m 0	0	<1	2
Magnesium	ppm	ASTM D5185m 0	2	<1	10
Calcium	ppm	ASTM D5185m 0.5	0	1	<1
Phosphorus	ppm	ASTM D5185m 536	165	156	20
Zinc	ppm	ASTM D5185m 0.2	10	7	23
Sulfur	ppm	ASTM D5185m 649	1189	872	1589

CONTAMINANTS

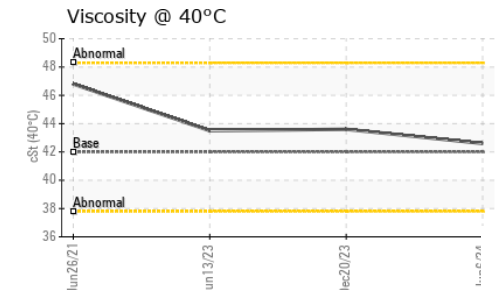
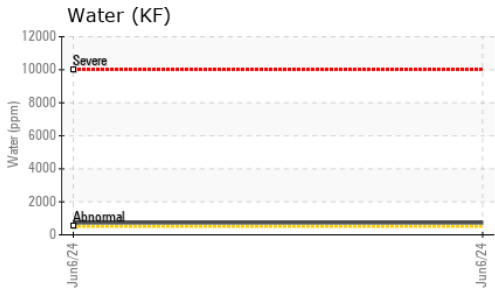
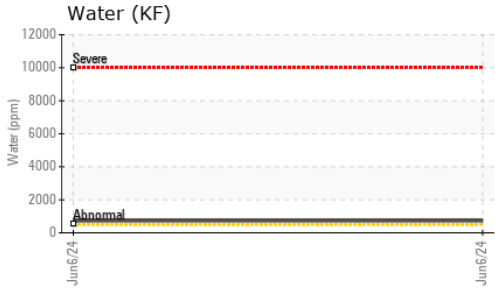
	method	limit/base	current	history1	history2
Silicon	ppm	ASTM D5185m >25	<1	<1	2
Sodium	ppm	ASTM D5185m	0	1	2
Potassium	ppm	ASTM D5185m >20	<1	0	6
Water	%	ASTM D6304 >0.05	0.073	---	---
ppm Water	ppm	ASTM D6304 >500	730	---	---

FLUID DEGRADATION

	method	limit/base	current	history1	history2
Acid Number (AN)	mg KOH/g	ASTM D8045 0.337	0.18	0.15	0.14



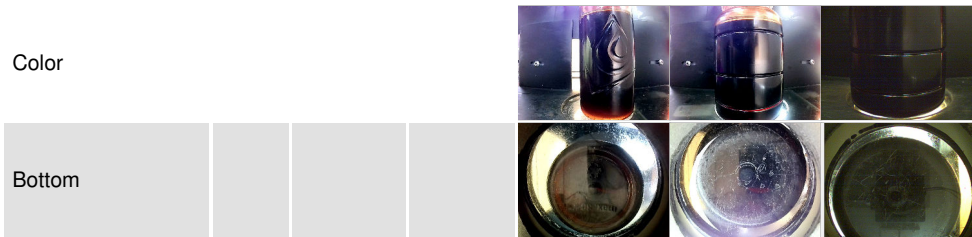
OIL ANALYSIS REPORT



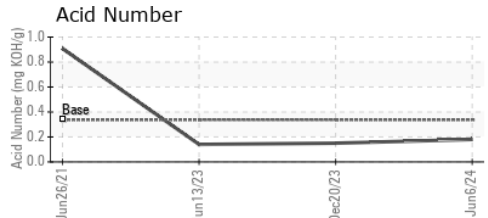
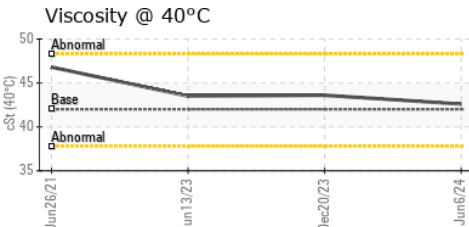
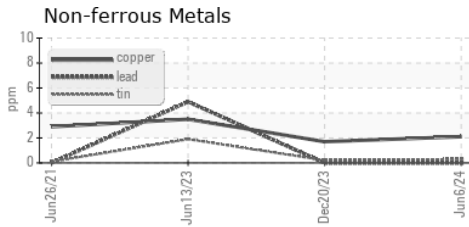
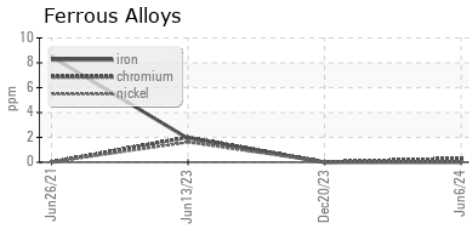
VISUAL	method	limit/base	current	history1	history2
White Metal	scalar	*Visual	NONE	NONE	NONE
Yellow Metal	scalar	*Visual	NONE	NONE	NONE
Precipitate	scalar	*Visual	NONE	NONE	NONE
Silt	scalar	*Visual	NONE	NONE	NONE
Debris	scalar	*Visual	NONE	NONE	LIGHT
Sand/Dirt	scalar	*Visual	NONE	NONE	NONE
Appearance	scalar	*Visual	NORML	NORML	NORML
Odor	scalar	*Visual	NORML	NORML	NORML
Emulsified Water	scalar	*Visual	>0.05	0.2%	NEG
Free Water	scalar	*Visual		NEG	NEG

FLUID PROPERTIES	method	limit/base	current	history1	history2
Visc @ 40°C	cSt	ASTM D445	42.0	42.6	43.6

SAMPLE IMAGES	method	limit/base	current	history1	history2
---------------	--------	------------	---------	----------	----------



GRAPHS



Laboratory : WearCheck USA - 501 Madison Ave., Cary, NC 27513
Sample No. : UDI0000358 **Received** : 11 Jun 2024
Lab Number : 06206639 **Tested** : 13 Jun 2024
Unique Number : 11074100 **Diagnosed** : 18 Jun 2024 - Jonathan Hester
Test Package : IND 2 (Additional Tests: KF)

DELTA INDUSTRIES - DOWNERS GROVE
 2201 CURTISS STREET
 DOWNERS GROVE, IL
 US 60515
 Contact: MICHAEL FERRIS

To discuss this sample report, contact Customer Service at 1-800-237-1369.

* - Denotes test methods that are outside of the ISO 17025 scope of accreditation.

Statements of conformity to specifications are based on the simple acceptance decision rule (JCGM 106:2012)

T: (630)960-3931