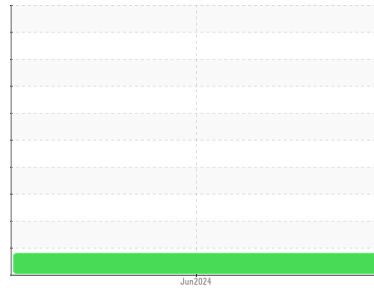




PROBLEM SUMMARY

Sample Rating Trend



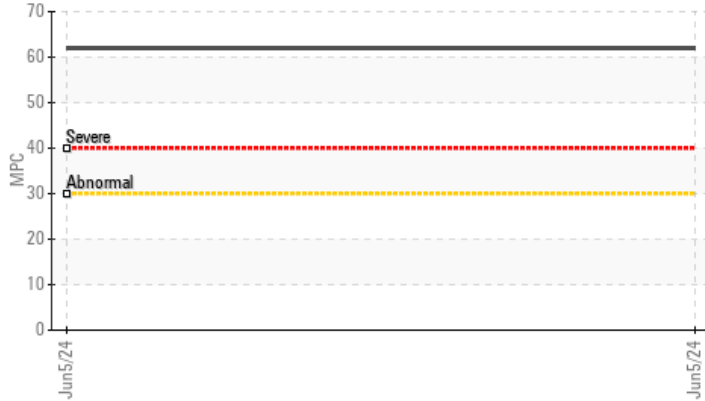
INSOLUBLES



Machine Id
INGERSOLL RAND GOYDAN CLARKTON 3 (S/N 20081)
 Component
Compressor
 Fluid
FEP1405340-00295 (--- GAL)

COMPONENT CONDITION SUMMARY

▲ Varnish Potential



RECOMMENDATION

We recommend you service the filters on this component. Resample at the next service interval to monitor.

PROBLEMATIC TEST RESULTS

Sample Status	SEVERE	---	---
MPC Varnish Potential	▲ 62	---	---

Customer Id: AIRGREWC
 Sample No.: WC0911664
 Lab Number: 06206643
 Test Package: IND 2



To manage this report scan the QR code

To discuss the diagnosis or test data:
 Jonathan Hester +1 919-379-4092 x4092
jhester@wearcheckusa.com

To change component or sample information:
 Customer Service +1 1-800-237-1369
customerservice@wearcheck.com

RECOMMENDED ACTIONS

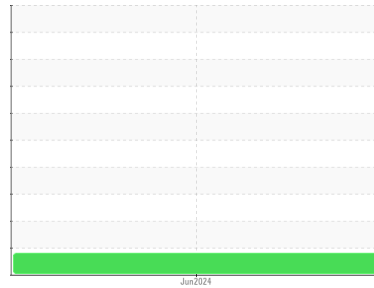
Action	Status	Date	Done By	Description
Change Filter	---	---	?	We recommend you service the filters on this component.

HISTORICAL DIAGNOSIS



OIL ANALYSIS REPORT

Sample Rating Trend



INSOLUBLES



Machine Id
INGERSOLL RAND GOYDAN CLARKTON 3 (S/N 20081)
 Component
Compressor
 Fluid
FEP1405340-00295 (--- GAL)

DIAGNOSIS

▲ Recommendation

We recommend you service the filters on this component. Resample at the next service interval to monitor.

Wear

All component wear rates are normal.

▲ Contamination

MPC (Membrane Patch Colorimetry) test indicates a high concentration of varnish present. There is no indication of any contamination in the oil.

Fluid Condition

The AN level is acceptable for this fluid. The condition of the oil is suitable for further service.

SAMPLE INFORMATION		method	limit/base	current	history1	history2
Sample Number	Client Info			WC0911664	---	---
Sample Date	Client Info			05 Jun 2024	---	---
Machine Age	hrs	Client Info		41144	---	---
Oil Age	hrs	Client Info		0	---	---
Oil Changed	Client Info			N/A	---	---
Sample Status				SEVERE	---	---

CONTAMINATION		method	limit/base	current	history1	history2
Water	WC Method		>0.1	NEG	---	---

WEAR METALS		method	limit/base	current	history1	history2
Iron	ppm	ASTM D5185m	>50	0	---	---
Chromium	ppm	ASTM D5185m	>10	<1	---	---
Nickel	ppm	ASTM D5185m		0	---	---
Titanium	ppm	ASTM D5185m		<1	---	---
Silver	ppm	ASTM D5185m		0	---	---
Aluminum	ppm	ASTM D5185m	>25	2	---	---
Lead	ppm	ASTM D5185m	>25	0	---	---
Copper	ppm	ASTM D5185m	>50	<1	---	---
Tin	ppm	ASTM D5185m	>15	<1	---	---
Vanadium	ppm	ASTM D5185m		0	---	---
Cadmium	ppm	ASTM D5185m		<1	---	---

ADDITIVES		method	limit/base	current	history1	history2
Boron	ppm	ASTM D5185m		0	---	---
Barium	ppm	ASTM D5185m		0	---	---
Molybdenum	ppm	ASTM D5185m		0	---	---
Manganese	ppm	ASTM D5185m		0	---	---
Magnesium	ppm	ASTM D5185m		<1	---	---
Calcium	ppm	ASTM D5185m		0	---	---
Phosphorus	ppm	ASTM D5185m		69	---	---
Zinc	ppm	ASTM D5185m		0	---	---
Sulfur	ppm	ASTM D5185m		482	---	---

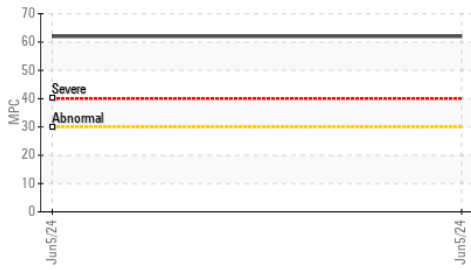
CONTAMINANTS		method	limit/base	current	history1	history2
Silicon	ppm	ASTM D5185m	>25	<1	---	---
Sodium	ppm	ASTM D5185m		0	---	---
Potassium	ppm	ASTM D5185m	>20	<1	---	---

FLUID DEGRADATION		method	limit/base	current	history1	history2
Acid Number (AN)	mg KOH/g	ASTM D8045		0.19	---	---
MPC Varnish Potential	Scale	ASTM D7843	>15	▲ 62	---	---

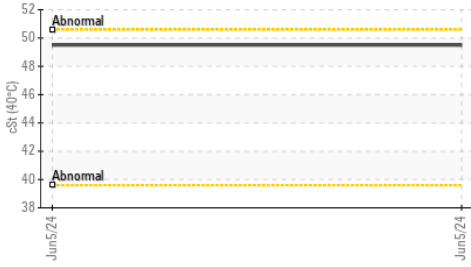


OIL ANALYSIS REPORT

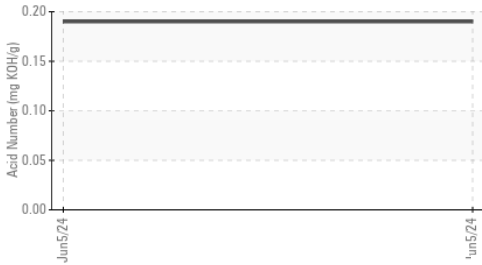
▲ Varnish Potential



Viscosity @ 40°C



Acid Number



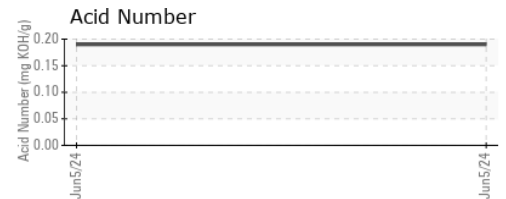
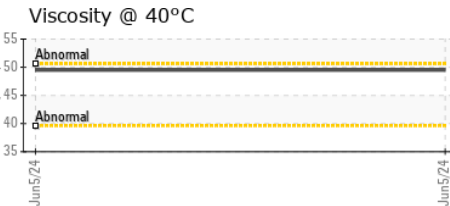
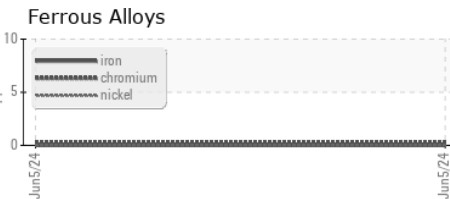
VISUAL	method	limit/base	current	history1	history2	
White Metal	scalar	*Visual	NONE	NONE	---	---
Yellow Metal	scalar	*Visual	NONE	NONE	---	---
Precipitate	scalar	*Visual	NONE	NONE	---	---
Silt	scalar	*Visual	NONE	NONE	---	---
Debris	scalar	*Visual	NONE	NONE	---	---
Sand/Dirt	scalar	*Visual	NONE	NONE	---	---
Appearance	scalar	*Visual	NORML	NORML	---	---
Odor	scalar	*Visual	NORML	NORML	---	---
Emulsified Water	scalar	*Visual	>0.1	NEG	---	---
Free Water	scalar	*Visual		NEG	---	---

FLUID PROPERTIES	method	limit/base	current	history1	history2
Visc @ 40°C	cSt	ASTM D445	49.5	---	---

SAMPLE IMAGES	method	limit/base	current	history1	history2
---------------	--------	------------	---------	----------	----------

Color				no image	no image
Bottom				no image	no image
MPC				no image	no image

GRAPHS



Certificate L2367

Laboratory : WearCheck USA - 501 Madison Ave., Cary, NC 27513
Sample No. : WC0911664 **Received** : 11 Jun 2024
Lab Number : 06206643 **Tested** : 18 Jun 2024
Unique Number : 11074104 **Diagnosed** : 18 Jun 2024 - Jonathan Hester
Test Package : IND 2 (Additional Tests: MPC)

FS-COMPRESSION CO, LLC
 203 AERO COURT
 GREENSBORO, NC
 US 27409

Contact: Dallas Burcham
 dallas.burcham@fs-compression.com

To discuss this sample report, contact Customer Service at 1-800-237-1369.

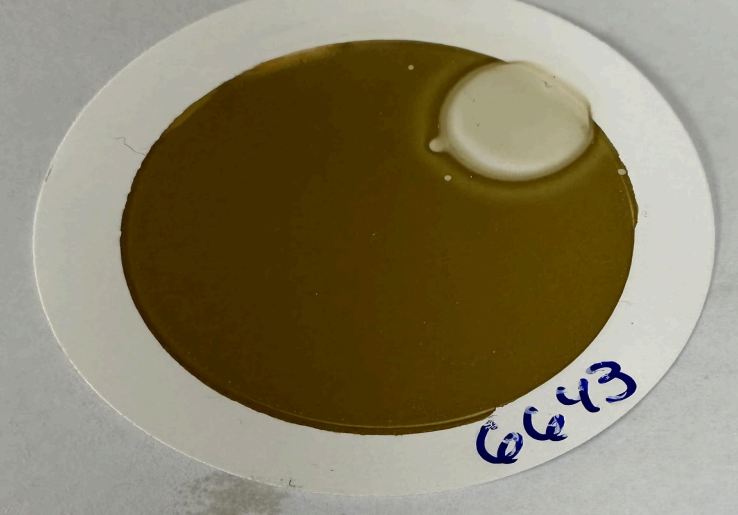
* - Denotes test methods that are outside of the ISO 17025 scope of accreditation.

Statements of conformity to specifications are based on the simple acceptance decision rule (JCGM 106:2012)

T: (336)605-9622

F: (336)605-9844

MPC (Varnish Test)



Sample Color & Clarity



This page left intentionally blank