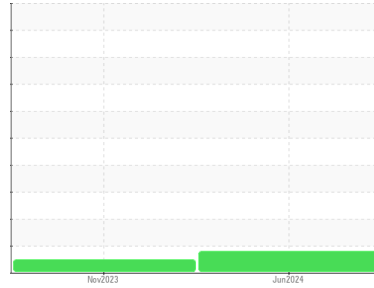




# OIL ANALYSIS REPORT

Sample Rating Trend



ISO



Area

[24156672]

Machine Id

**B21613 - RATCHETER**

Component

**Gearbox**

Fluid

**GEAR OIL ISO 680 (--- GAL)**

## DIAGNOSIS

### Recommendation

No corrective action is recommended at this time. Resample at the next service interval to monitor.

### Wear

All component wear rates are normal.

### Contamination

There is a high amount of silt (particulates < 14 microns in size) present in the oil.

### Fluid Condition

The AN level is acceptable for this fluid. The condition of the oil is acceptable for the time in service.

## SAMPLE INFORMATION

	method	limit/base	current	history1	history2
Sample Number	Client Info		<b>WC0930398</b>	WC0866688	---
Sample Date	Client Info		<b>03 Jun 2024</b>	29 Nov 2023	---
Machine Age	hrs	Client Info	<b>0</b>	0	---
Oil Age	hrs	Client Info	<b>0</b>	0	---
Oil Changed	Client Info		<b>N/A</b>	N/A	---
Sample Status			<b>ABNORMAL</b>	NORMAL	---

## CONTAMINATION

	method	limit/base	current	history1	history2
Water	WC Method	>0.2	<b>NEG</b>	NEG	---

## WEAR METALS

	method	limit/base	current	history1	history2	
Iron	ppm	ASTM D5185m	>200	<b>1</b>	2	---
Chromium	ppm	ASTM D5185m	>15	<b>&lt;1</b>	0	---
Nickel	ppm	ASTM D5185m	>15	<b>&lt;1</b>	0	---
Titanium	ppm	ASTM D5185m		<b>&lt;1</b>	0	---
Silver	ppm	ASTM D5185m		<b>0</b>	0	---
Aluminum	ppm	ASTM D5185m	>25	<b>2</b>	0	---
Lead	ppm	ASTM D5185m	>100	<b>&lt;1</b>	0	---
Copper	ppm	ASTM D5185m	>200	<b>&lt;1</b>	0	---
Tin	ppm	ASTM D5185m	>25	<b>&lt;1</b>	0	---
Vanadium	ppm	ASTM D5185m		<b>0</b>	0	---
Cadmium	ppm	ASTM D5185m		<b>0</b>	0	---

## ADDITIVES

	method	limit/base	current	history1	history2	
Boron	ppm	ASTM D5185m	50	<b>24</b>	21	---
Barium	ppm	ASTM D5185m	15	<b>0</b>	0	---
Molybdenum	ppm	ASTM D5185m	15	<b>0</b>	0	---
Manganese	ppm	ASTM D5185m		<b>0</b>	0	---
Magnesium	ppm	ASTM D5185m	50	<b>&lt;1</b>	0	---
Calcium	ppm	ASTM D5185m	50	<b>0</b>	8	---
Phosphorus	ppm	ASTM D5185m	350	<b>315</b>	368	---
Zinc	ppm	ASTM D5185m	100	<b>0</b>	0	---
Sulfur	ppm	ASTM D5185m	12500	<b>11366</b>	10122	---

## CONTAMINANTS

	method	limit/base	current	history1	history2	
Silicon	ppm	ASTM D5185m	>50	<b>7</b>	2	---
Sodium	ppm	ASTM D5185m		<b>0</b>	0	---
Potassium	ppm	ASTM D5185m	>20	<b>&lt;1</b>	0	---

## FLUID CLEANLINESS

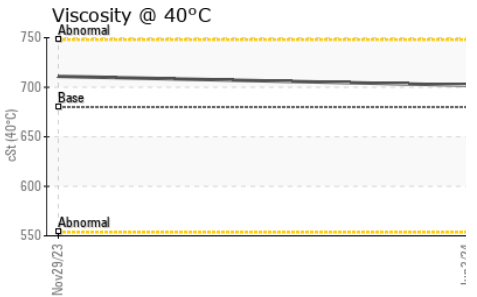
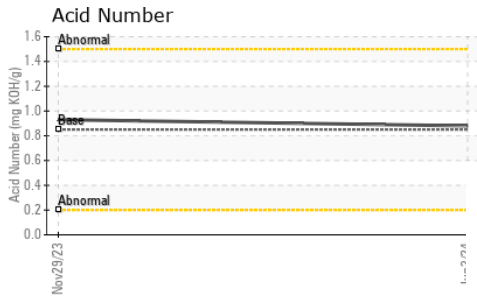
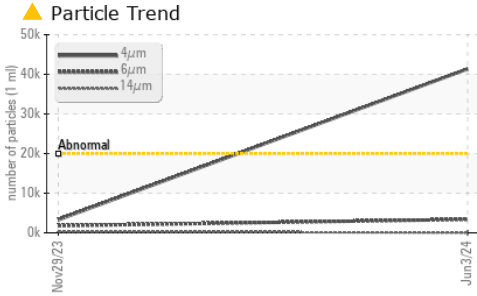
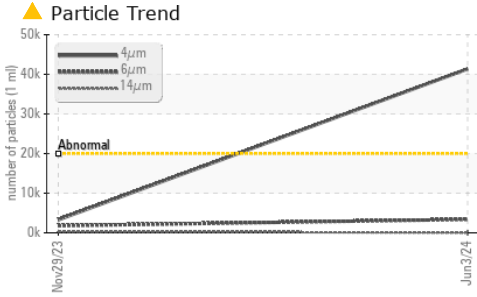
	method	limit/base	current	history1	history2
Particles >4µm	ASTM D7647	>20000	<b>▲ 41373</b>	3289	---
Particles >6µm	ASTM D7647	>5000	<b>3382</b>	1791	---
Particles >14µm	ASTM D7647	>640	<b>40</b>	305	---
Particles >21µm	ASTM D7647	>160	<b>4</b>	103	---
Particles >38µm	ASTM D7647	>40	<b>0</b>	16	---
Particles >71µm	ASTM D7647	>10	<b>0</b>	2	---
Oil Cleanliness	ISO 4406 (c)	>21/19/16	<b>▲ 23/19/12</b>	19/18/15	---

## FLUID DEGRADATION

	method	limit/base	current	history1	history2	
Acid Number (AN)	mg KOH/g	ASTM D8045	0.85	<b>0.88</b>	0.93	---



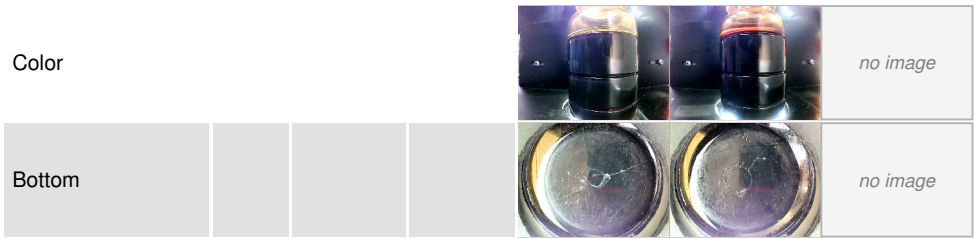
# OIL ANALYSIS REPORT



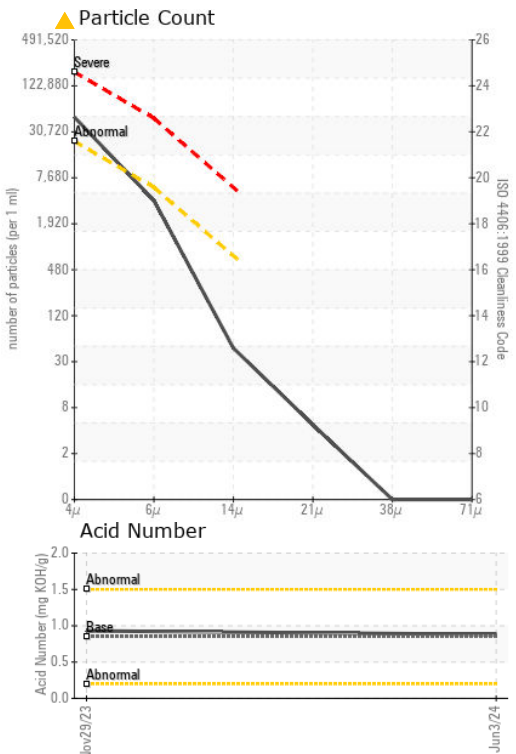
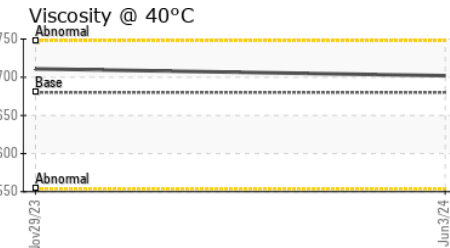
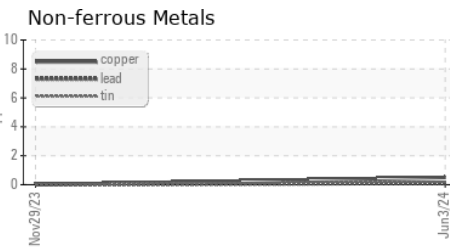
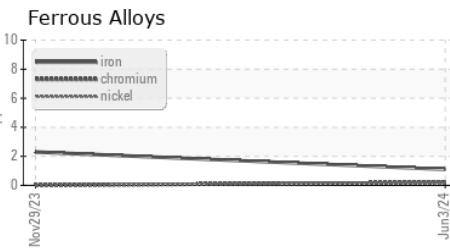
VISUAL	method	limit/base	current	history1	history2
White Metal	scalar	*Visual	NONE	NONE	---
Yellow Metal	scalar	*Visual	NONE	NONE	---
Precipitate	scalar	*Visual	NONE	NONE	---
Silt	scalar	*Visual	NONE	NONE	---
Debris	scalar	*Visual	NONE	NONE	---
Sand/Dirt	scalar	*Visual	NONE	NONE	---
Appearance	scalar	*Visual	NORML	NORML	---
Odor	scalar	*Visual	NORML	NORML	---
Emulsified Water	scalar	*Visual	>0.2	NEG	0.2%
Free Water	scalar	*Visual		NEG	---

FLUID PROPERTIES	method	limit/base	current	history1	history2
Visc @ 40°C	cSt	ASTM D445 680	702	711	---

SAMPLE IMAGES	method	limit/base	current	history1	history2
---------------	--------	------------	---------	----------	----------



## GRAPHS



Certificate L2367

**Laboratory** : WearCheck USA - 501 Madison Ave., Cary, NC 27513  
**Sample No.** : WC0930398 **Received** : 12 Jun 2024  
**Lab Number** : 06207755 **Tested** : 13 Jun 2024  
**Unique Number** : 11075216 **Diagnosed** : 14 Jun 2024 - Angela Borella  
**Test Package** : IND 2 ( Additional Tests: PrtCount )

**HORMEL FOODS-BELOIT**  
 3000 KENNEDY DRIVE  
 BELOIT, WI  
 US 53511  
 Contact: Craig Bennett  
 cabennett@hormel.com

To discuss this sample report, contact Customer Service at 1-800-237-1369.

\* - Denotes test methods that are outside of the ISO 17025 scope of accreditation.

Statements of conformity to specifications are based on the simple acceptance decision rule (JCGM 106:2012)

T: F: (608)365-8322