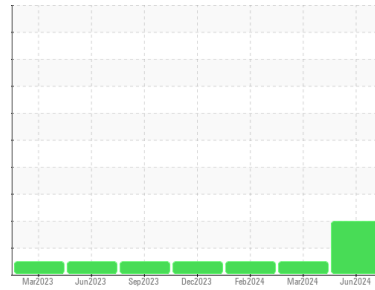




FUEL REPORT

Sample Rating Trend



WATER



Machine Id
SPACE X JRTI - GEN 1

Component
Tank Diesel Fuel

Fluid
No.2 DIESEL FUEL (ULTRALOW SULPHUR) (2500 GAL)

DIAGNOSIS

Recommendation

We advise that you follow the water drain-off procedure for this component, and use off-line filtration to improve the cleanliness of the system fluid.

Corrosion

All metal levels are normal indicating no corrosion in the system.

Contaminants

Free water present. High concentration of visible dirt/debris present in the fuel.

Fuel Condition

Sulfur value derived by ASTM D5453 method for ULSD validation.

SAMPLE INFORMATION		method	limit/base	current	history1	history2
Sample Number	Client Info			WCDF4619	WCDF4514	WCDF4498
Sample Date	Client Info			08 Jun 2024	05 Mar 2024	15 Feb 2024
Machine Age	mls	Client Info		0	0	0
Sample Status				ABNORMAL	NORMAL	NORMAL

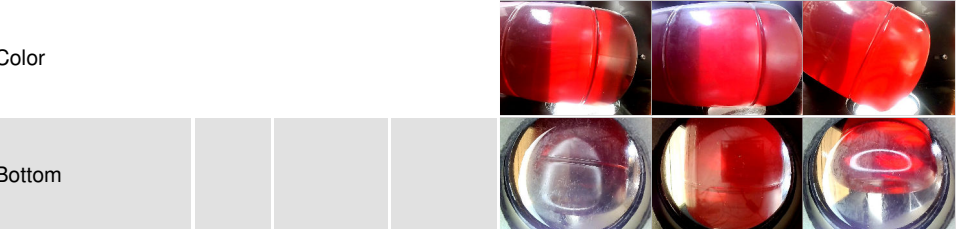
PHYSICAL PROPERTIES		method	limit/base	current	history1	history2
ASTM Color	scalar	*ASTM D1500		L4.5	L4.5	L5.0
Visc @ 40°C	cSt	ASTM D445	3.0	2.93	3.17	3.12

SULFUR CONTENT		method	limit/base	current	history1	history2
Sulfur	ppm	ASTM D5185m	10	153	0	4
Sulfur (UVF)	ppm	ASTM D5453		111	34	20

CONTAMINANTS		method	limit/base	current	history1	history2
Silicon	ppm	ASTM D5185m	<1.0	<1	0	0
Sodium	ppm	ASTM D5185m	<0.1	<1	0	<1
Potassium	ppm	ASTM D5185m	<0.1	<1	0	0
Water	%	ASTM D6304	<0.05	0.004	0.004	0.004
ppm Water	ppm	ASTM D6304	<500	46	47	47
% Gasoline	%	*In-House	<0.50	0.0	0.0	0.0
% Biodiesel	%	*In-House	<20.0	0.0	2.1	2.5

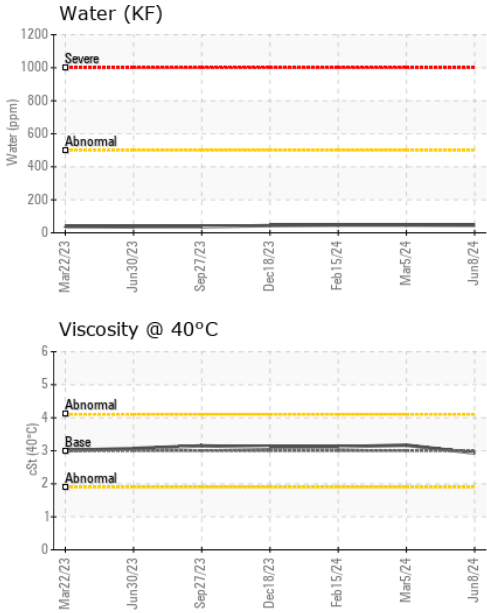
HEAVY METALS		method	limit/base	current	history1	history2
Aluminum	ppm	ASTM D5185m	<0.1	0	0	0
Nickel	ppm	ASTM D5185m	<0.1	0	0	<1
Lead	ppm	ASTM D5185m	<0.1	0	0	0
Vanadium	ppm	ASTM D5185m	<0.1	<1	0	0
Iron	ppm	ASTM D5185m	<0.1	0	0	0
Calcium	ppm	ASTM D5185m	<0.1	0	0	0
Magnesium	ppm	ASTM D5185m	<0.1	<1	0	0
Phosphorus	ppm	ASTM D5185m	<0.1	0	0	0
Zinc	ppm	ASTM D5185m	<0.1	0	0	0

SAMPLE IMAGES		method	limit/base	current	history1	history2
---------------	--	--------	------------	---------	----------	----------

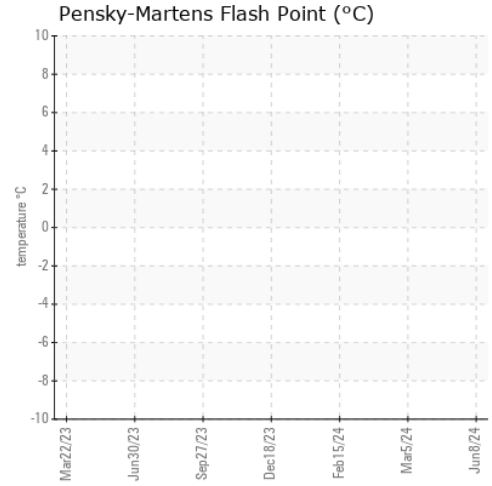




FUEL REPORT



GRAPHS



Certificate L2367

Laboratory : WearCheck USA - 501 Madison Ave., Cary, NC 27513
Sample No. : WCDF4619 **Received** : 12 Jun 2024
Lab Number : **06208237** **Tested** : 21 Jun 2024
Unique Number : 11075698 **Diagnosed** : 21 Jun 2024 - Doug Bogart
Test Package : DF-5 (Additional Tests: Bacteria, PrtCount, Screen)

To discuss this sample report, contact Customer Service at 1-800-237-1369.

* - Denotes test methods that are outside of the ISO 17025 scope of accreditation.

Statements of conformity to specifications are based on the simple acceptance decision rule (JCGM 106:2012)

TANK WIZARDS
 1511 MASTERS RD NW
 PALM BAY, FL
 US 32907

Contact: WENDALL STRODERD
 wendall@tankwizards.com

T: (321)427-5149

F: (321)574-4131