

Area

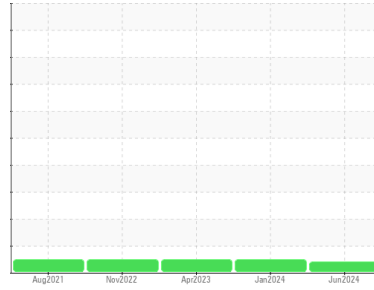
**PALLUBE 32 [8017626]**

Machine Id

**INGERSOLL RAND CBV245192 - C&C MFG**

Component

**Compressor**



**DIAGNOSIS**

**Recommendation**

The filter change at the time of sampling has been noted. Resample at the next service interval to monitor.

**Wear**

All component wear rates are normal.

**Contamination**

There is no indication of any contamination in the oil.

**Fluid Condition**

An additive depletion is indicated. Confirm oil type. The AN level is acceptable for this fluid.

SAMPLE INFORMATION		method	limit/base	current	history1	history2
Sample Number	Client Info			<b>UCS06208773</b>	UCS06071123	UCS05825032
Sample Date	Client Info			<b>07 Jun 2024</b>	19 Jan 2024	12 Apr 2023
Machine Age	hrs	Client Info		<b>60519</b>	58285	53763
Oil Age	hrs	Client Info		<b>2230</b>	6830	2308
Oil Changed	Client Info			<b>Not Changed</b>	Not Changed	Not Changed
Sample Status				<b>ATTENTION</b>	NORMAL	NORMAL

CONTAMINATION		method	limit/base	current	history1	history2
Water	WC Method		>0.1	<b>NEG</b>	NEG	NEG

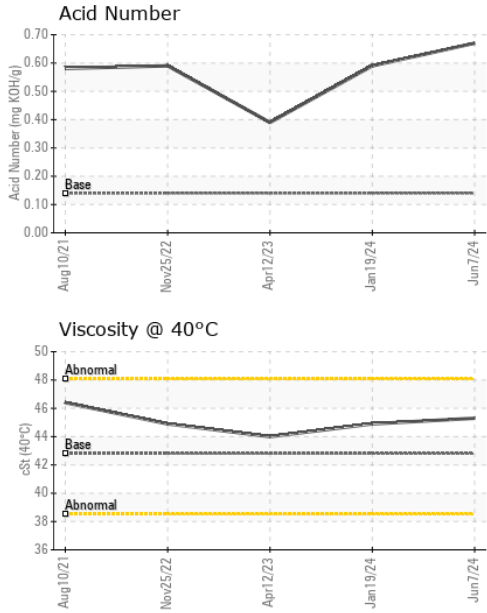
WEAR METALS		method	limit/base	current	history1	history2
Iron	ppm	ASTM D5185m	>50	<b>0</b>	0	<1
Chromium	ppm	ASTM D5185m	>10	<b>0</b>	0	0
Nickel	ppm	ASTM D5185m		<b>0</b>	0	0
Titanium	ppm	ASTM D5185m		<b>0</b>	0	0
Silver	ppm	ASTM D5185m		<b>0</b>	0	0
Aluminum	ppm	ASTM D5185m	>25	<b>0</b>	0	0
Lead	ppm	ASTM D5185m	>25	<b>0</b>	0	0
Copper	ppm	ASTM D5185m	>50	<b>&lt;1</b>	0	<1
Tin	ppm	ASTM D5185m	>15	<b>0</b>	0	0
Vanadium	ppm	ASTM D5185m		<b>0</b>	0	0
Cadmium	ppm	ASTM D5185m		<b>0</b>	0	0

ADDITIVES		method	limit/base	current	history1	history2
Boron	ppm	ASTM D5185m	1	<b>0</b>	0	0
Barium	ppm	ASTM D5185m	730	<b>0</b>	0	230
Molybdenum	ppm	ASTM D5185m	0	<b>0</b>	0	0
Manganese	ppm	ASTM D5185m	0.0	<b>0</b>	0	<1
Magnesium	ppm	ASTM D5185m	0	<b>0</b>	0	0
Calcium	ppm	ASTM D5185m	0	<b>0</b>	0	<1
Phosphorus	ppm	ASTM D5185m	0	<b>8</b>	1	0
Zinc	ppm	ASTM D5185m	0	<b>3</b>	0	13
Sulfur	ppm	ASTM D5185m	590	<b>439</b>	314	469

CONTAMINANTS		method	limit/base	current	history1	history2
Silicon	ppm	ASTM D5185m	>25	<b>&lt;1</b>	<1	<1
Sodium	ppm	ASTM D5185m		<b>4</b>	4	14
Potassium	ppm	ASTM D5185m	>20	<b>&lt;1</b>	2	2

FLUID DEGRADATION		method	limit/base	current	history1	history2
Acid Number (AN)	mg KOH/g	ASTM D8045	0.14	<b>0.67</b>	0.59	0.39

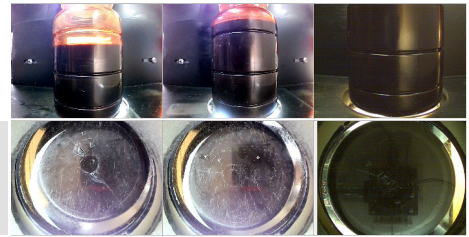
# OIL ANALYSIS REPORT



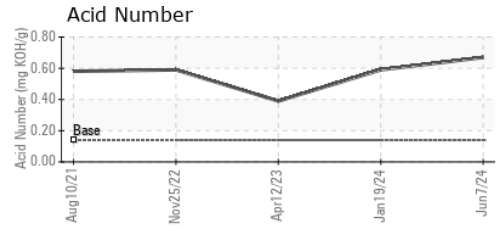
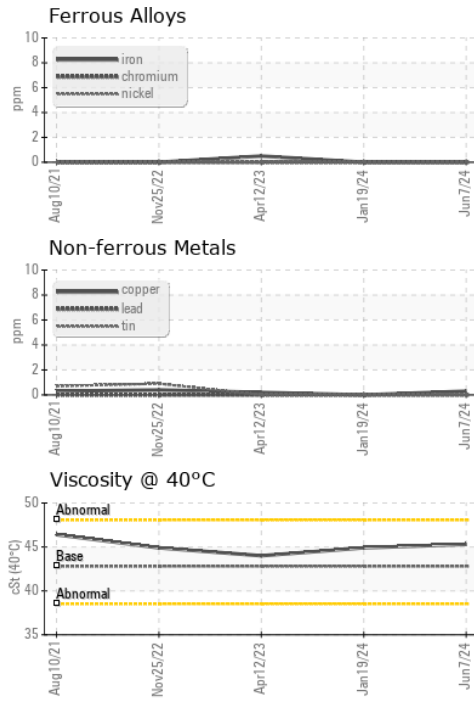
VISUAL	method	limit/base	current	history1	history2	
White Metal	scalar	*Visual	NONE	<b>NONE</b>	NONE	LIGHT
Yellow Metal	scalar	*Visual	NONE	<b>NONE</b>	NONE	NONE
Precipitate	scalar	*Visual	NONE	<b>NONE</b>	NONE	NONE
Silt	scalar	*Visual	NONE	<b>NONE</b>	NONE	NONE
Debris	scalar	*Visual	NONE	<b>NONE</b>	NONE	NONE
Sand/Dirt	scalar	*Visual	NONE	<b>NONE</b>	NONE	NONE
Appearance	scalar	*Visual	NORML	<b>NORML</b>	NORML	NORML
Odor	scalar	*Visual	NORML	<b>NORML</b>	NORML	NORML
Emulsified Water	scalar	*Visual	>0.1	<b>NEG</b>	NEG	NEG
Free Water	scalar	*Visual		<b>NEG</b>	NEG	NEG

FLUID PROPERTIES	method	limit/base	current	history1	history2	
Visc @ 40°C	cSt	ASTM D445	42.8	<b>45.3</b>	44.9	44.0

SAMPLE IMAGES	method	limit/base	current	history1	history2
Color					
Bottom					



## GRAPHS



**Laboratory** : WearCheck USA - 501 Madison Ave., Cary, NC 27513  
**Sample No.** : UCS06208773      **Received** : 13 Jun 2024  
**Lab Number** : **06208773**      **Tested** : 14 Jun 2024  
**Unique Number** : 11076234      **Diagnosed** : 14 Jun 2024 - Angela Borella  
**Test Package** : IND 2

**LIFT PRO EQUIPMENT CO**  
 SIOUX FALLS, SD  
 US 57104  
 Contact: REUBEN  
 tim@liftproequipment.com  
 T: (605)339-6494  
 F:

To discuss this sample report, contact Customer Service at 1-800-237-1369.  
 \* - Denotes test methods that are outside of the ISO 17025 scope of accreditation.  
 Statements of conformity to specifications are based on the simple acceptance decision rule (JCGM 106:2012)